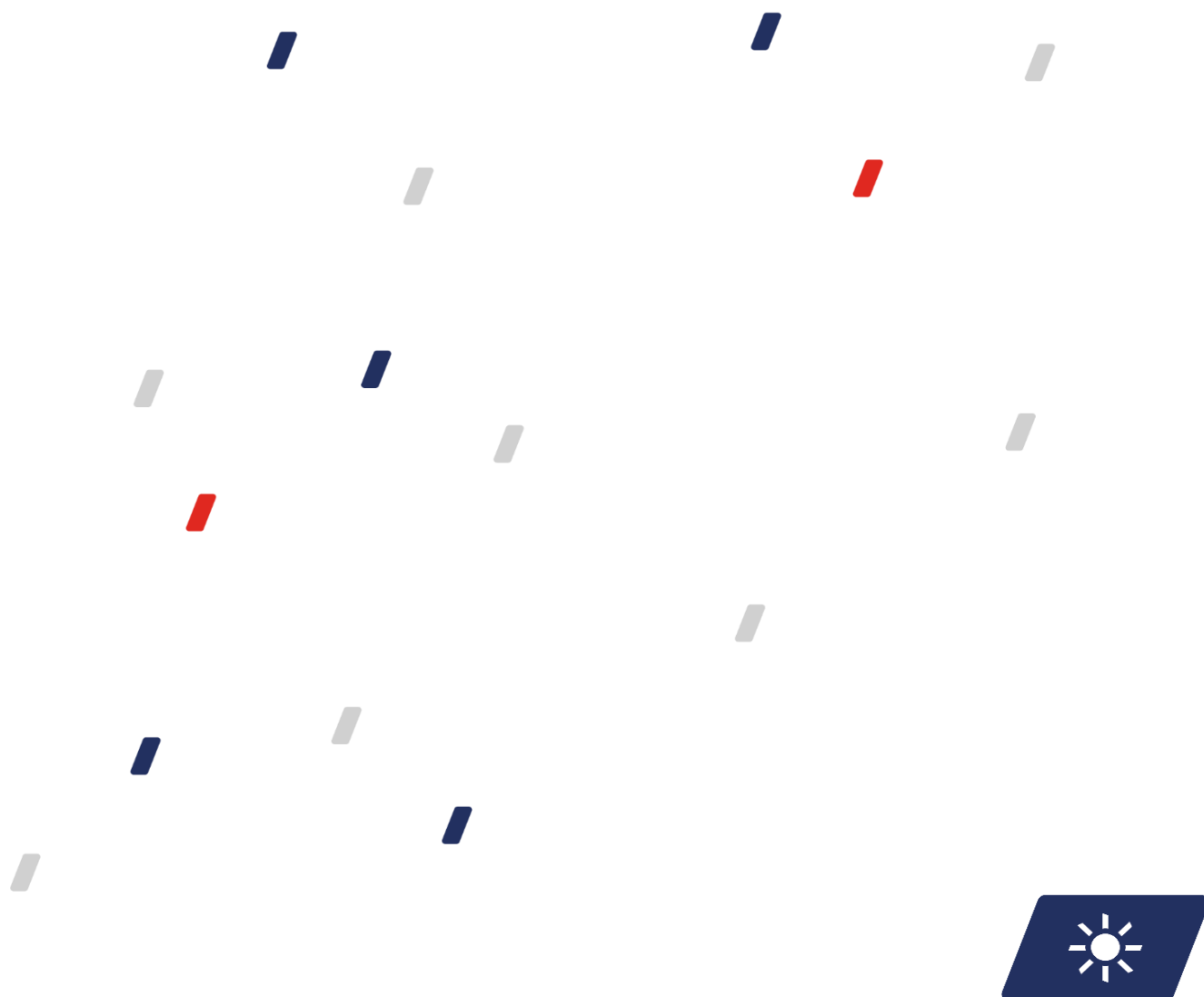


YEARLY REPORT ON THE OPERATION OF CZECH HEAT SUPPLY SYSTEMS FOR 2022



CONTENTS

1	ABBREVIATIONS, DEFINITIONS AND KEY RELATIONSHIPS	4
2	COMMENTARY	5
3	HEAT BALANCE	6
4	HEAT PRODUCTION	7
4.1	Gross heat production by fuel	7
4.2	Gross heat production in Czech Regions	8
4.3	Gross heat production by fuel in Czech Regions	9
5	HEAT SUPPLY	10
5.1	Heat supply by fuel	10
5.2	Heat supply in Czech Regions	11
5.3	Heat supply by fuel in Czech Regions	12
5.4	Supply of heat from coal, biomass and biogas	13
6	INSTALLED CAPACITY OF HEAT GENERATING IN CZECH REGIONS	14
7	HEAT CONSUMPTION	15
7.1	Heat consumption by national economy sector	15
7.2	Heat consumption by national economy sector in Czech Regions	16
8	HEAT PRODUCTION, SUPPLY AND CONSUMPTION BY CZECH REGION	17
8.1	Heat production, supply and consumption: Prague	17
8.2	Heat production, supply and consumption: Jihočeský Region	18
8.3	Heat production, supply and consumption: Jihomoravský Region	19
8.4	Heat production, supply and consumption: Karlovarský Region	20
8.5	Heat production, supply and consumption: Vysočina Region	21
8.6	Heat production, supply and consumption: Královéhradecký Region	22
8.7	Heat production, supply and consumption: Liberecký Region	23
8.8	Heat production, supply and consumption: Moravskoslezský Region	24
8.9	Heat production, supply and consumption: Olomoucký Region	25
8.10	Heat production, supply and consumption: Pardubický Region	26
8.11	Heat production, supply and consumption: Plzeňský Region	27
8.12	Heat production, supply and consumption: Středočeský Region	28
8.13	Heat production, supply and consumption: Ústecký Region	29
8.14	Heat production, supply and consumption: Zlínský Region	30
9	NET HEAT PRODUCTION AND HEAT PRODUCTION FROM CHP	31
10	HEAT BALANCE, HEAT SUPPLY, HEAT CONSUMPTION, AND CHP	32
10.1	Development of the heat balance, quarter-on-quarter comparison	32
10.2	Development of the heat balance, month-on-month comparison	33
10.3	Gross heat production by fuel and Czech Regions	34
10.4	Heat supply by fuel and Czech Regions	35
10.5	Heat consumption	36
10.6	Heat production from CHP	37
11	ADDITIONAL GRAPHS AND THE HEAT BALANCE DIAGRAM FOR 2021	38

INTRODUCTION

Under Section 17 (7) (m) of Act No 458/2000 as amended (the Energy Act), the Energy Regulatory Office (ERO) publishes the Yearly Report on the Operation of Heat Supply Systems in the CR for 2022. The statistics contained herein are mainly intended for Czech governmental authorities and institutions and those of the European Union, and the expert circles.

The ERO obtains data for the yearly report under ERO Public Notice 404/2016 on the particulars and structure of the returns required for preparing reports on the operation of systems in energy industries, including the dates, scope and rules for preparing the returns (the statistics public notice), as amended, which came into effect on 1 January 2017.

All the details of the methodology for reporting data for the ERO statistics are specified in the ERO's Explanatory Statement 8/2018 of 14 September 2018 on the method of completing the returns under the statistics public notice for the electricity and heat supply industries. The Explanatory Statement and the current returns are posted on the ERO's website.

All information for this yearly report has been obtained from licensed entities.

The Yearly Report on the Operation of Heat Supply Systems in the CR for 2022 follows up on the yearly reports released in preceding years and provides information about the heat supply industry's key statistics for 2022, thereby complementing the Yearly Report on the Operation of the Czech Electricity Grid for 2022, which also contains data on combined heat & power generation (CHP). The present report covers all heat produced in licensed activities, including CHP, and also statistics on heat balance, supply and consumption by category. The report also contains an overview of the installed capacities in the Czech heat producing plants and some Region-specific evaluations. The yearly report for 2022 is based on the data in the report for 4Q 2022 and contains some data that is more accurate.

1 ABBREVIATIONS, DEFINITIONS AND KEY RELATIONSHIPS

CZ-NACE Classification of economic activities, CZ-NACE, in accordance with the Czech Statistical Office

CHP Combined heat and power generation

SZT Heat supply system

Qnet Net heat production

QCHP Supply of useful heat from CHP

PHA Prague

JHČ Jihočeský (South Bohemian) Region

JHM Jihomoravský (South Moravian) Region

KVK Karlovarský (Karlovy Vary) Region

VYS Vysočina Region

HKK Královéhradecký (Hradec Králové) Region

LBK Liberecký (Liberec) Region

MSK Moravskoslezský (Moravian-Silesian) Region

OLK Olomoucký (Olomouc) Region

PAK Pardubický (Pardubice) Region

PLK Plzeňský (Plzeň) Region

STČ Středočeský (Central Bohemian) Region

ULK Ústecký (Ústí nad Labem) Region

ZLK Zlínský (Zlín) Region

Gross heat production =

Gross heat production in plants, without heat used for electricity generation

Net heat production =

Gross heat production without own use (process only) heat consumption

Own use (process only) of heat =

Heat consumption for heat and power generation, which is required for operating the process of heat and power generation

Losses =

Losses in heat production and distribution losses (in heat distribution)

Own use of heat =

Heat consumption for the producer's own consumption (without own use (process only) of heat)

Heat supply =

Thermal energy quantity supplied into heat supply systems

Balancing difference =

Gross heat production - own use (process only) of heat - losses - supply to the producer's own enterprise - heat supply

Heat consumption =

Final heat consumption in each of the sectors of the national economy

2 COMMENTARY

The basic chapter contains the heat balance; it shows that gross heat production totalled 151,093.5 TJ in 2022 and 6.6% less heat was produced compared with 2021 (161,705.2 TJ). Approximately 31% of gross production was consumed in the entity's own enterprise or facility (these are mostly works' own CHP plants that are not included in the classification of economic activities (CZ-NACE) in group 35 Electricity, gas, steam and air conditioning supply). Heat supply amounted to 82,070 TJ, down by 11.3% on 2021 (92,490.6 TJ). Heat supply accounted for approximately 54%, own use for process purposes accounted for 6%, and losses accounted for 8% of gross heat production. Most of the heat was produced from brown coal (39%), followed by natural gas (20%) and biomass (15%). The largest quantity of heat was produced in the Ústecký Region (20.2%), followed by the Moravskoslezský Region (19.7%) and the Středočeský Region (17%). The structure of heat production by fuel differs in each of the Regions depending on fuel availability. The decline in gross heat production from coal continues; compared with 2017, the decline for brown coal was by 16% and for hard coal by 36%. On the other hand, in the case of biomass it increased by 28%. The largest quantity of heat from hard coal was produced in the Moravskoslezský Region (98%), from brown coal in the Ústecký Region (30%), from natural gas in the Středočeský Region (23%), from biomass in the Ústecký Region (39%), and from biogas in the Vysočina Region (15%).

The structure of heat supply by fuel is similar to that of gross heat production (44% from brown coal, 26% from natural gas, and 10% from hard coal); in terms of the structure of heat supply by Region, the Středočeský Region is placed first, followed by the Moravskoslezský Region and the Ústecký Region. At the end of 2022, the installed thermal capacity of heat production plants totalled 38,105.3 MWt. Chapter 7 shows a heat consumption breakdown by sector of the national economy. In 2022, households consumed 32,289 TJ, accounting for 43% of total consumption, industry consumed 20,452.9 TJ (27% of total consumption), and the trade and service sector consumed 17,105.5 TJ (23% of total consumption). Chapter 8 summarises gross heat production, and heat supply and consumption in the Czech Regions.

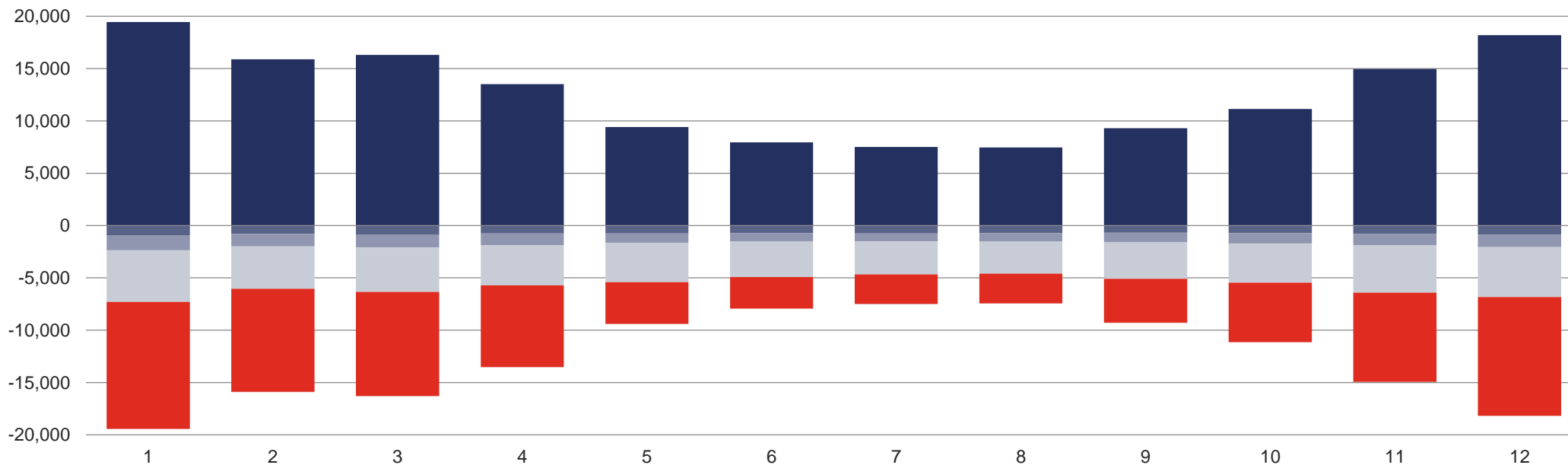
Combined heat and power generation (CHP) produced 90,748.6 TJ of useful heat, accounting for 64% of net heat production. Most of useful heat from CHP was produced from brown coal (48%), followed by biomass (18%) and natural gas (13%). The small share of useful heat from natural gas in net heat (42%) is attributable to the larger number of natural gas heating plants (substations) than cogeneration units. In 2022, CHP produced 8.3% less heat than in 2021.

A comparison of each of the quarters of the two years shows the largest decrease in gross heat production and heat supply in the second quarter of 2022, specifically by 8.5% and 17% respectively, compared with the second quarter of 2021. In almost all Czech Regions, gross heat production in 2022 declined by units of per cent compared with 2021, but for one exception, the Karlovarský Region (increase by 14%). On the contrary, heat supply decreased in all Czech Regions; the causes included energy commodity prices and the warmer weather; for example, heat supply from natural gas dropped by 15.2%.

3 HEAT BALANCE [TJ]

	First quarter			Second quarter			Third quarter			Fourth quarter			Total
	January	February	March	April	May	June	July	August	September	October	November	December	
■ Gross heat production			51,649.9			30,879.7			24,271.0			44,292.9	151,093.5
	19,443.9	15,892.0	16,314.0	13,523.2	9,408.3	7,948.1	7,511.9	7,457.2	9,301.8	11,147.4	14,952.0	18,193.6	
■ Own use (process only) of heat			2,643.1			2,219.6			2,179.6			2,369.7	9,412.0
	930.0	810.2	902.8	763.1	756.7	699.8	748.2	737.4	694.0	737.3	781.1	851.3	
■ Losses			3,819.6			2,800.9			2,430.2			3,294.7	12,345.3
	1,440.2	1,183.7	1,195.6	1,112.2	880.4	808.3	785.6	760.3	884.2	981.3	1,105.9	1,207.5	
■ Own use of heat			13,242.0			11,042.2			9,714.5			13,044.8	47,043.6
	4,938.2	4,056.3	4,247.5	3,843.2	3,778.5	3,420.5	3,124.5	3,090.0	3,500.1	3,737.2	4,524.0	4,783.6	
■ Heat supply			31,881.9			14,755.7			9,897.3			25,535.0	82,070.0
	12,108.6	9,829.5	9,943.8	7,782.4	3,971.3	3,002.0	2,836.0	2,853.2	4,208.1	5,671.6	8,529.2	11,334.2	
■ Balancing difference			63.3			61.3			49.3			48.7	222.6
	26.9	12.2	24.2	22.4	21.4	17.5	17.6	16.2	15.4	20.0	11.7	17.0	

Heat balance [TJ]

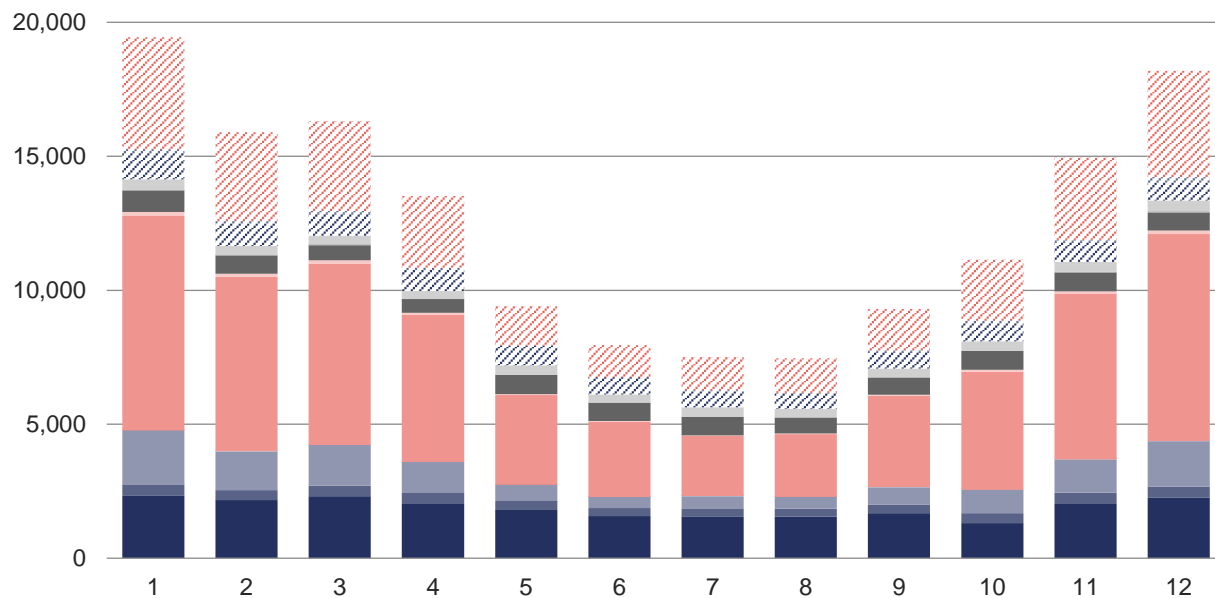


4 HEAT PRODUCTION

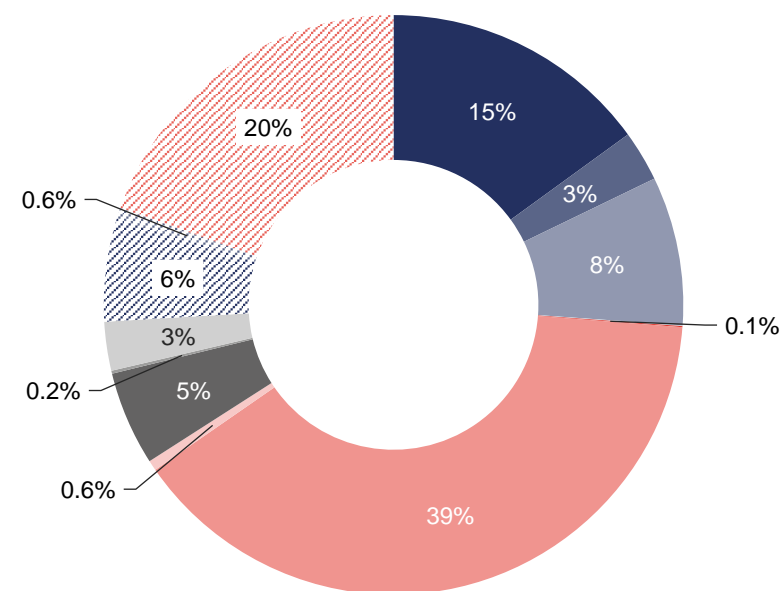
4.1 Gross heat production by fuel [TJ]

	First quarter			Second quarter			Third quarter			Fourth quarter			Total
	January	February	March	April	May	June	July	August	September	October	November	December	
Gross heat production	51,649.9			30,879.7			24,271.0			44,292.9			151,093.5
	19,443.9	15,892.0	16,314.0	13,523.2	9,408.3	7,948.1	7,511.9	7,457.2	9,301.8	11,147.4	14,952.0	18,193.6	
■ Biomass	2,330.1	2,172.1	2,312.4	2,054.2	1,801.8	1,576.8	1,564.7	1,547.8	1,680.5	1,315.1	2,053.6	2,251.9	22,661.0
■ Biogas	421.7	368.7	398.6	374.2	331.7	294.7	297.4	296.5	320.1	366.1	387.8	417.2	4,274.6
■ Hard coal	2,016.8	1,450.3	1,510.7	1,162.8	611.2	415.2	456.7	451.1	652.9	874.0	1,240.1	1,697.6	12,539.5
■ Electrical energy	4.1	4.5	5.7	4.8	3.8	3.5	3.5	3.7	3.3	11.0	13.0	11.7	72.5
■ Ambient energy (heat pump)	11.3	9.1	9.2	7.8	4.0	3.1	2.7	2.9	4.3	6.5	8.7	11.2	80.9
■ Solar energy (solar panel)	0.0	0.0	0.1	0.1	0.1	0.1	0.1	0.1	0.0	0.0	0.0	0.0	0.6
■ Brown coal	8,001.7	6,502.8	6,766.2	5,471.9	3,340.4	2,804.2	2,245.2	2,331.2	3,399.6	4,391.8	6,159.0	7,708.0	59,121.9
■ Nuclear fuel	133.7	106.6	111.8	88.1	36.5	18.5	17.9	16.1	41.2	68.7	95.1	131.5	865.9
■ Coke	0.0	0.0	0.0	0.0	0.0	0.0	0.0	0.0	0.0	0.0	0.0	0.0	0.0
■ Waste heat	789.1	686.4	560.4	508.8	709.6	690.5	689.9	598.5	627.7	704.1	695.9	671.8	7,932.8
■ Other liquid fuels	48.4	31.5	36.6	3.8	3.1	11.1	2.5	2.3	28.6	3.3	29.1	47.9	248.4
■ Other solid fuels	386.6	326.7	327.2	297.3	362.5	289.4	354.0	324.4	322.5	355.6	373.5	398.9	4,118.5
■ Other gases	976.3	820.5	821.0	814.5	728.3	647.8	575.4	586.6	632.6	667.4	753.9	674.3	8,698.5
■ Other	0.0	0.0	0.0	0.0	0.0	0.0	0.0	0.0	0.0	0.0	0.0	0.0	0.0
■ Fuel oils	147.9	103.7	94.2	60.2	10.5	4.6	55.7	12.7	46.1	109.0	76.5	201.0	922.1
■ Natural gas	4,176.0	3,309.1	3,359.8	2,674.7	1,464.9	1,188.7	1,246.2	1,283.3	1,542.4	2,274.7	3,065.8	3,970.6	29,556.2

Gross heat production [TJ]



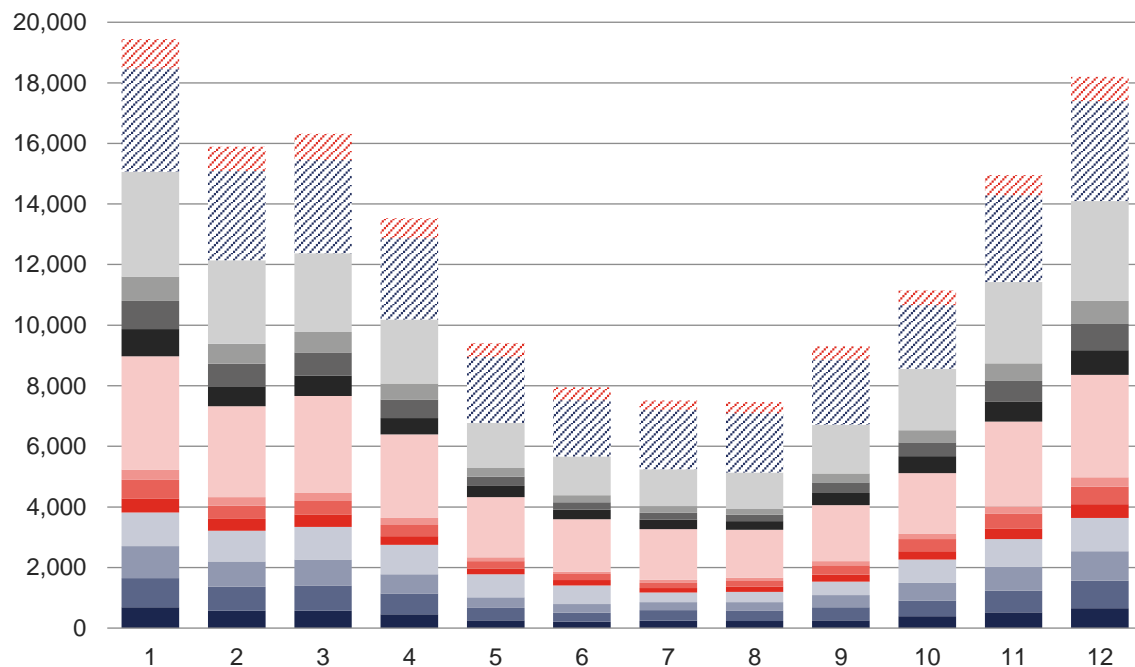
Shares of fuels in gross heat production



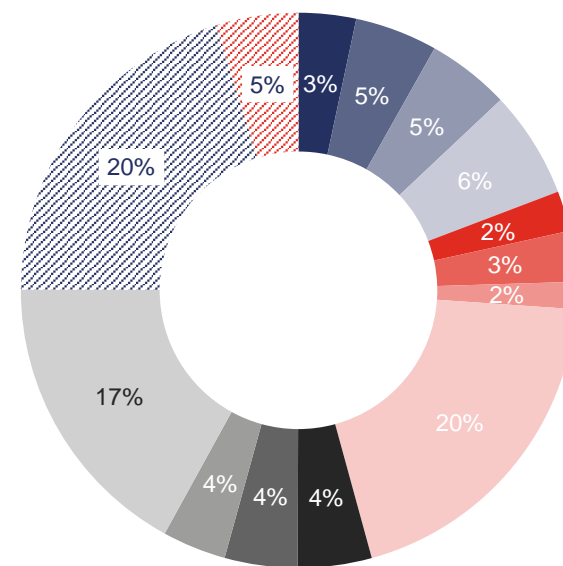
4.2 Gross heat production in Czech Regions [TJ]

	First quarter			Second quarter			Third quarter			Fourth quarter			Total
	January	February	March	April	May	June	July	August	September	October	November	December	
Gross heat production	51,649.9			30,879.7			24,271.0			44,292.9			151,093.5
	19,443.9	15,892.0	16,314.0	13,523.2	9,408.3	7,948.1	7,511.9	7,457.2	9,301.8	11,147.4	14,952.0	18,193.6	
■ Prague	692.2	568.4	571.3	459.6	252.1	209.8	243.9	238.6	258.3	387.2	515.6	653.3	5,050.1
■ Jihočeský Region	961.3	794.8	837.7	685.4	417.7	297.6	344.2	342.0	434.4	527.5	724.9	907.2	7,274.7
■ Jihomoravský Region	1,057.0	831.9	856.7	629.4	348.9	283.5	272.5	272.6	397.2	577.4	777.0	975.1	7,279.3
■ Karlovarský Region	1,101.5	1,013.0	1,071.6	970.5	761.6	620.0	315.4	345.3	446.7	766.7	920.8	1,102.8	9,436.0
■ Vysočina Region	467.6	397.4	410.5	291.5	188.4	174.1	141.0	169.7	225.6	274.3	341.5	452.2	3,533.7
■ Královéhradecký Region	614.6	437.2	443.3	371.0	239.8	202.0	175.3	183.7	306.2	407.2	500.2	581.8	4,462.2
■ Liberecký Region	335.2	280.3	271.9	225.8	128.3	75.7	107.6	105.8	136.3	169.0	233.0	307.9	2,376.8
■ Moravskoslezský Region	3,743.7	2,997.4	3,202.8	2,757.0	1,983.7	1,727.5	1,666.5	1,585.1	1,854.9	2,006.0	2,799.3	3,382.2	29,706.2
■ Olomoucký Region	895.4	655.5	669.4	541.6	369.4	317.5	312.8	288.7	403.7	563.4	666.7	807.1	6,491.1
■ Pardubický Region	936.4	756.4	768.6	612.0	310.3	248.4	225.2	207.4	347.8	455.1	674.6	873.6	6,415.9
■ Plzeňský Region	795.1	652.2	671.1	531.4	281.3	230.1	222.3	196.3	295.9	397.0	583.4	756.5	5,612.5
■ Středočeský Region	3,461.5	2,762.6	2,595.2	2,114.7	1,489.0	1,279.1	1,213.9	1,204.2	1,603.9	2,024.8	2,692.0	3,299.9	25,740.8
■ Ústecký Region	3,411.7	2,947.9	3,081.4	2,684.9	2,177.6	1,860.3	1,958.0	1,953.2	2,144.1	2,103.2	2,858.3	3,297.8	30,478.4
■ Zlínský Region	970.7	796.9	862.4	648.4	460.4	422.7	313.2	364.3	447.1	488.6	664.9	796.2	7,235.8

Gross heat production in Czech Regions [TJ]



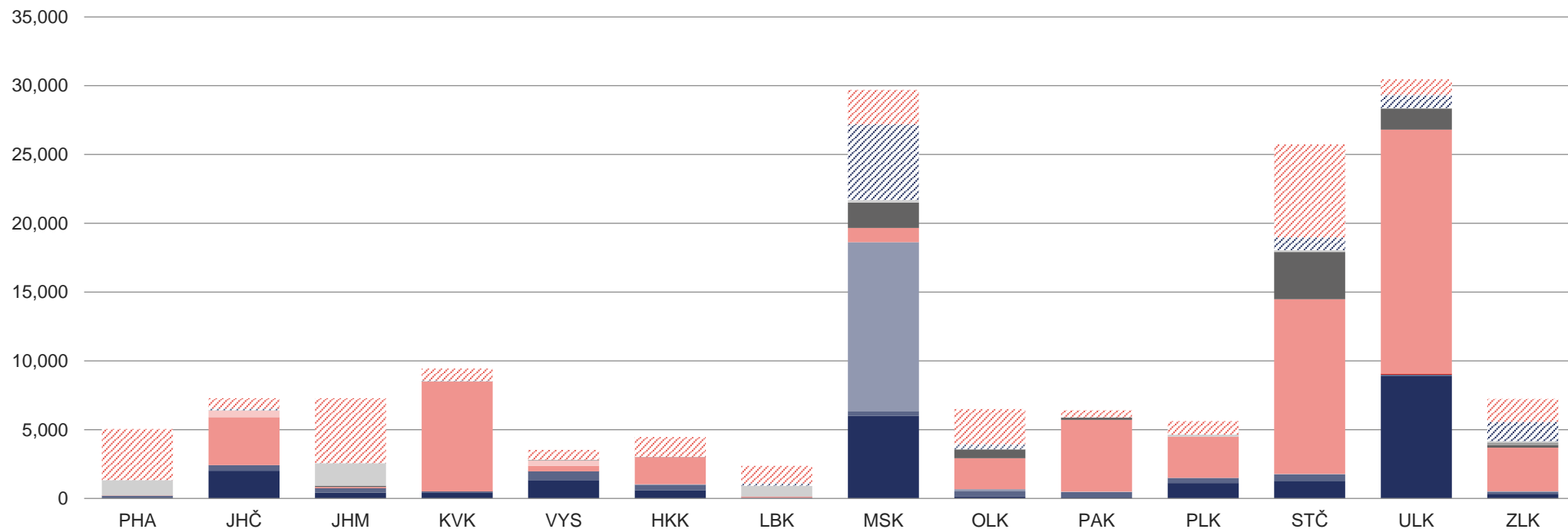
Czech Regions' share in gross heat production



4.3. Gross heat production by fuel in Czech Regions [TJ]

	PHA	JHČ	JHM	KVK	VYS	HKK	LBK	MSK	OLK	PAK	PLK	STČ	ULK	ZLK	Total
Gross heat production	5,050.1	7,274.7	7,279.3	9,436.0	3,533.7	4,462.2	2,376.8	29,706.2	6,491.1	6,415.9	5,612.5	25,740.8	30,478.4	7,235.8	151,093.5
■ Biomass	0.0	2,016.8	417.4	441.5	1,325.4	598.9	3.6	6,004.5	157.4	61.7	1,112.7	1,287.4	8,893.6	340.2	22,661.0
■ Biogas	184.6	405.9	323.7	73.6	645.1	391.6	39.3	357.8	360.6	394.3	378.9	478.0	104.3	136.6	4,274.6
■ Hard coal	0.0	0.0	1.2	0.0	0.0	45.0	0.0	12,272.6	159.5	4.1	0.0	0.0	6.0	51.2	12,539.5
■ Electrical energy	3.8	0.0	4.6	0.0	0.0	0.0	0.0	0.8	0.0	38.3	4.5	20.2	0.0	0.2	72.5
■ Ambient energy (heat pump)	11.4	0.0	0.6	4.9	0.0	0.0	0.0	0.0	0.0	0.0	0.0	0.0	63.5	0.4	80.9
■ Solar energy (solar panel)	0.0	0.0	0.2	0.2	0.2	0.0	0.0	0.0	0.0	0.0	0.0	0.0	0.1	0.0	0.6
■ Brown coal	0.0	3,482.7	88.8	7,979.2	394.3	1,980.2	94.5	1,029.2	2,250.0	5,207.7	3,002.8	12,704.6	17,746.5	3,161.5	59,121.9
■ Nuclear fuel	0.0	484.6	0.0	0.0	381.3	0.0	0.0	0.0	0.0	0.0	0.0	0.0	0.0	0.0	865.9
■ Coke	0.0	0.0	0.0	0.0	0.0	0.0	0.0	0.0	0.0	0.0	0.0	0.0	0.0	0.0	0.0
■ Waste heat	0.0	0.0	82.2	9.5	30.6	1.4	5.4	1,845.0	637.2	187.0	0.0	3,423.0	1,523.7	187.8	7,932.8
■ Other liquid fuels	0.0	14.9	0.0	0.0	0.0	0.0	0.0	0.0	0.0	0.0	0.0	37.6	0.0	195.9	248.4
■ Other solid fuels	1,134.6	8.0	1,653.6	0.3	13.7	0.0	764.1	181.2	0.0	0.0	140.7	102.3	44.2	75.9	4,118.5
■ Other gases	0.0	0.9	0.0	0.0	0.0	0.0	0.0	5,501.7	0.0	0.0	0.5	888.2	891.8	1,415.4	8,698.5
■ Other	0.0	0.0	0.0	0.0	0.0	0.0	0.0	0.0	0.0	0.0	0.0	0.0	0.0	0.0	0.0
■ Fuel oils	1.1	116.7	2.8	73.3	2.4	18.2	198.7	15.4	380.9	2.7	2.4	40.4	65.6	1.6	922.1
■ Natural gas	3,714.5	744.1	4,704.2	853.6	740.6	1,426.9	1,271.2	2,497.9	2,545.5	520.2	970.0	6,759.3	1,139.0	1,669.1	29,556.2

Gross heat production in Czech Regions [TJ]

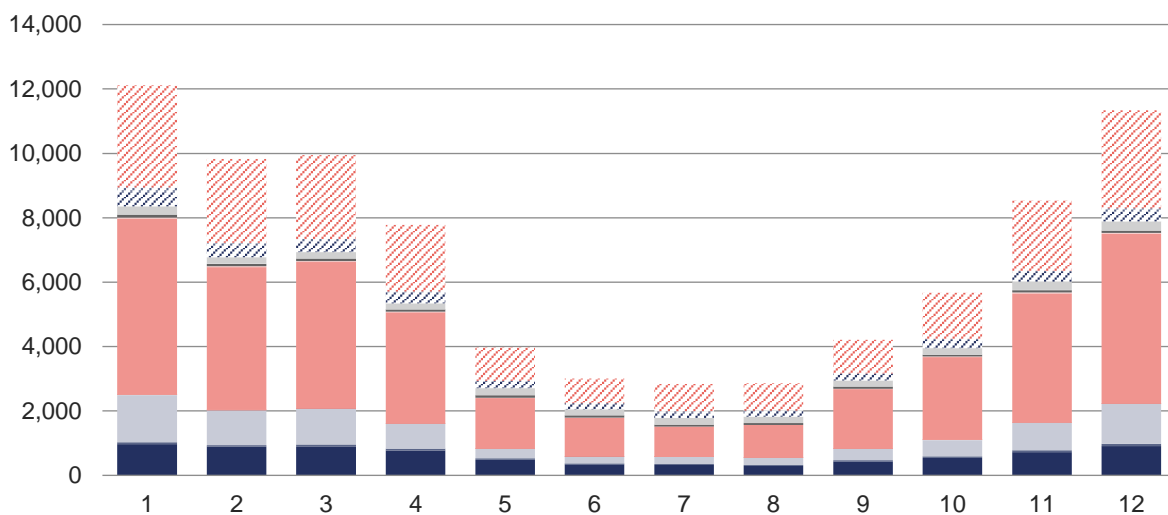


5 HEAT SUPPLY

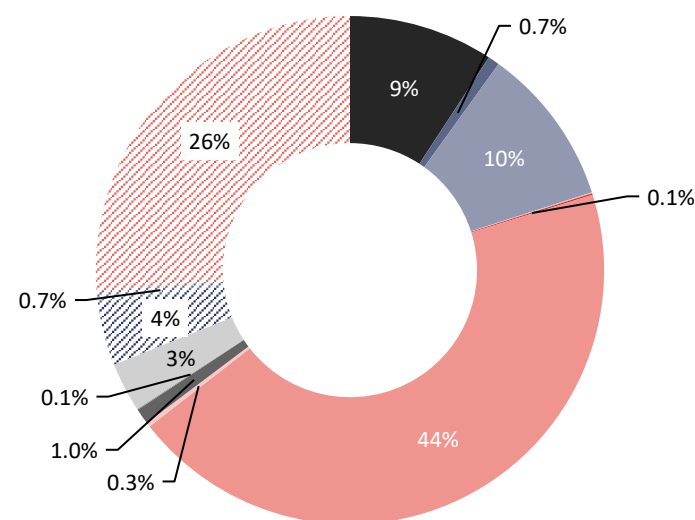
5.1 Heat supply by fuel [TJ]

	First quarter			Second quarter			Third quarter			Fourth quarter			Total
	January	February	March	April	May	June	July	August	September	October	November	December	
Heat supply	31,881.9			14,755.7			9,897.3			25,535.0			82,070.0
	12,108.6	9,829.5	9,943.8	7,782.4	3,971.3	3,002.0	2,836.0	2,853.2	4,208.1	5,671.6	8,529.2	11,334.2	
■ Biomass	967.0	886.4	894.7	767.9	483.4	340.5	319.9	293.5	436.3	539.1	720.2	906.4	7,555.1
■ Biogas	66.3	56.0	60.5	57.0	43.3	35.0	31.5	31.5	39.9	52.3	60.9	68.3	602.5
■ Hard coal	1,458.0	1,075.6	1,113.4	774.9	296.4	205.4	218.5	216.7	346.0	497.7	848.0	1,243.6	8,294.2
■ Electrical energy	3.9	4.4	5.0	4.6	3.0	2.8	3.2	3.4	2.8	7.9	9.1	6.0	55.9
■ Ambient energy (heat pump)	11.0	8.8	8.7	7.3	3.6	2.7	2.4	2.6	4.1	6.3	8.1	10.7	76.1
■ Solar energy (solar panel)	0.0	0.0	0.1	0.1	0.1	0.1	0.1	0.1	0.0	0.0	0.0	0.0	0.6
■ Brown coal	5,465.5	4,433.3	4,546.9	3,449.0	1,573.4	1,196.6	938.3	1,015.6	1,852.2	2,570.1	4,005.8	5,265.0	36,311.5
■ Nuclear fuel	35.6	28.7	27.8	23.0	10.3	7.2	6.8	6.9	11.7	15.8	25.0	34.9	233.9
■ Coke	0.0	0.0	0.0	0.0	0.0	0.0	0.0	0.0	0.0	0.0	0.0	0.0	0.0
■ Waste heat	87.9	73.6	74.9	70.4	73.3	78.3	58.7	53.4	62.3	52.2	73.0	64.5	822.5
■ Other liquid fuels	9.2	7.7	7.0	2.2	1.5	3.8	1.0	0.9	3.9	2.1	5.3	10.8	55.5
■ Other solid fuels	251.5	204.5	193.3	185.1	216.0	178.8	202.4	197.1	185.6	211.8	265.1	281.4	2,572.6
■ Other gases	456.6	356.5	333.5	320.5	230.0	188.4	175.1	184.1	208.2	252.2	301.3	302.9	3,309.2
■ Other	0.0	0.0	0.0	0.0	0.0	0.0	0.0	0.0	0.0	0.0	0.0	0.0	0.0
■ Fuel oils	128.7	90.6	79.1	50.6	6.4	2.5	36.9	7.9	16.6	30.0	24.2	99.6	573.3
■ Natural gas	3,167.4	2,603.5	2,598.8	2,069.7	1,030.7	760.0	841.3	839.5	1,038.6	1,434.1	2,183.1	3,040.2	21,607.1

Heat supply [TJ]



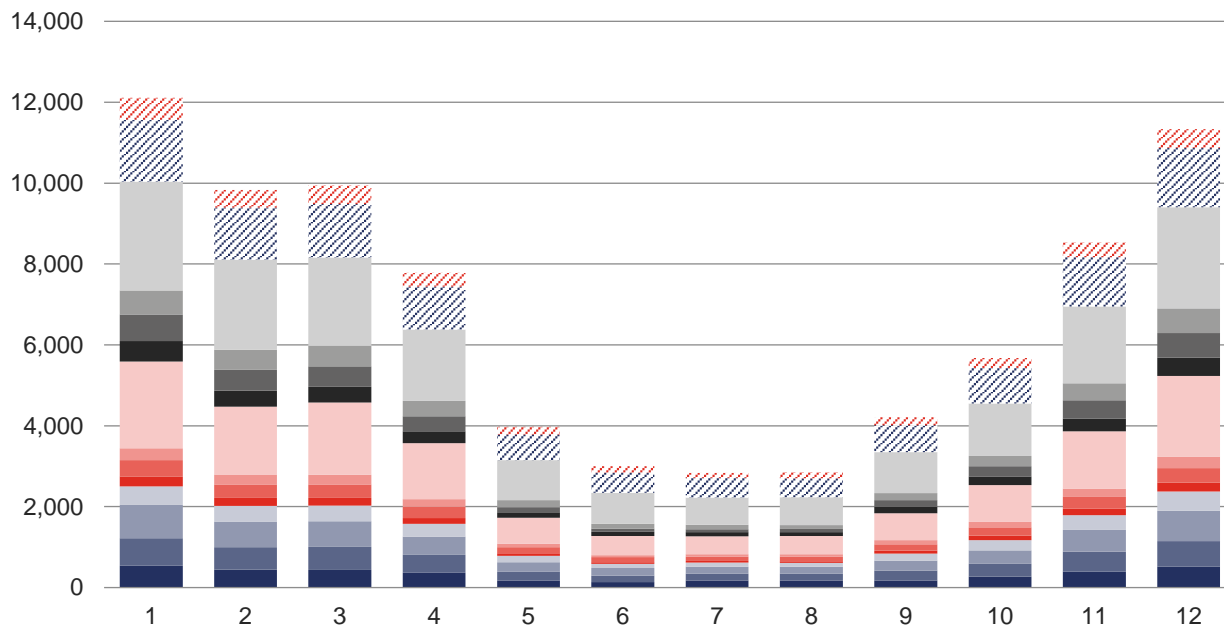
Shares of fuels in heat supply



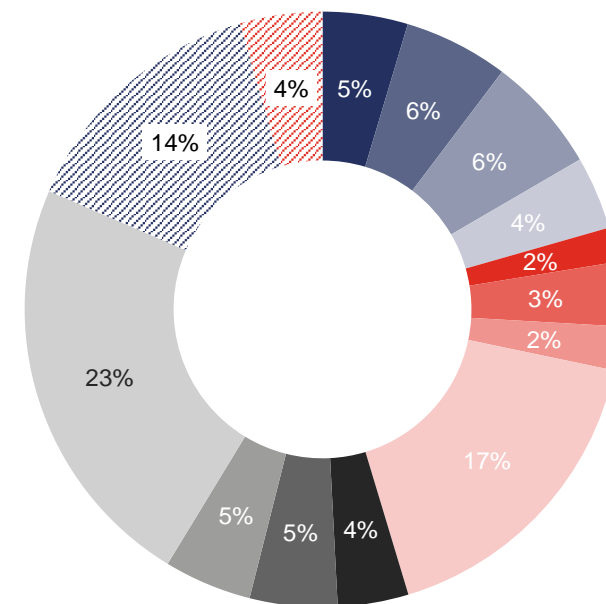
5.2 Heat supply in Czech Regions [TJ]

	First quarter			Second quarter			Third quarter			Fourth quarter			Total
	January	February	March	April	May	June	July	August	September	October	November	December	
Heat supply	31,881.9			14,755.7			9,897.3			25,535.0			82,070.0
	12,108.6	9,829.5	9,943.8	7,782.4	3,971.3	3,002.0	2,836.0	2,853.2	4,208.1	5,671.6	8,529.2	11,334.2	
■ Prague	542.4	447.2	436.4	361.9	173.5	136.3	173.1	172.6	171.9	267.4	397.6	512.8	3,793.1
■ Jihočeský Region	678.3	551.3	571.1	443.9	222.7	155.9	169.8	168.2	250.8	321.6	492.4	632.6	4,658.3
■ Jihomoravský Region	822.7	630.5	628.7	454.5	230.6	189.7	176.3	177.0	243.7	329.0	536.7	756.8	5,176.3
■ Karlovarský Region	459.5	388.6	387.0	312.8	157.6	104.1	97.4	93.7	171.6	257.5	359.2	469.2	3,258.3
■ Vysočina Region	241.3	197.2	195.8	146.7	62.8	42.7	40.4	38.9	71.7	106.9	165.3	229.1	1,538.6
■ Královéhradecký Region	403.4	333.8	330.3	272.7	154.3	123.2	103.0	110.4	159.8	203.8	288.0	354.0	2,836.8
■ Liberecký Region	300.2	249.5	239.1	194.2	85.6	47.7	60.7	60.4	100.4	137.6	203.8	273.3	1,952.4
■ Moravskoslezský Region	2,139.2	1,677.8	1,784.5	1,386.8	636.7	473.3	445.2	456.0	664.4	911.9	1,421.8	2,002.1	13,999.6
■ Olomoucký Region	505.6	392.4	393.0	287.6	136.2	102.4	101.0	96.0	159.1	209.6	315.8	453.8	3,152.5
■ Pardubický Region	658.3	513.7	503.8	377.0	129.5	85.6	76.6	75.4	167.8	254.4	448.4	612.3	3,902.7
■ Plzeňský Region	593.0	495.9	507.8	376.4	168.7	113.4	105.1	98.5	171.9	251.7	421.6	604.2	3,908.3
■ Středočeský Region	2,693.5	2,225.1	2,186.2	1,768.9	989.6	770.8	675.5	689.6	1,012.6	1,296.4	1,898.3	2,503.2	18,709.8
■ Ústecký Region	1,534.0	1,288.9	1,321.4	1,059.9	634.7	497.6	488.1	464.2	666.5	879.4	1,216.5	1,464.4	11,515.5
■ Zlínský Region	537.4	437.8	458.5	339.0	189.0	159.3	123.7	152.4	195.9	244.3	364.0	466.4	3,667.7

Heat supply in Czech Regions [TJ]



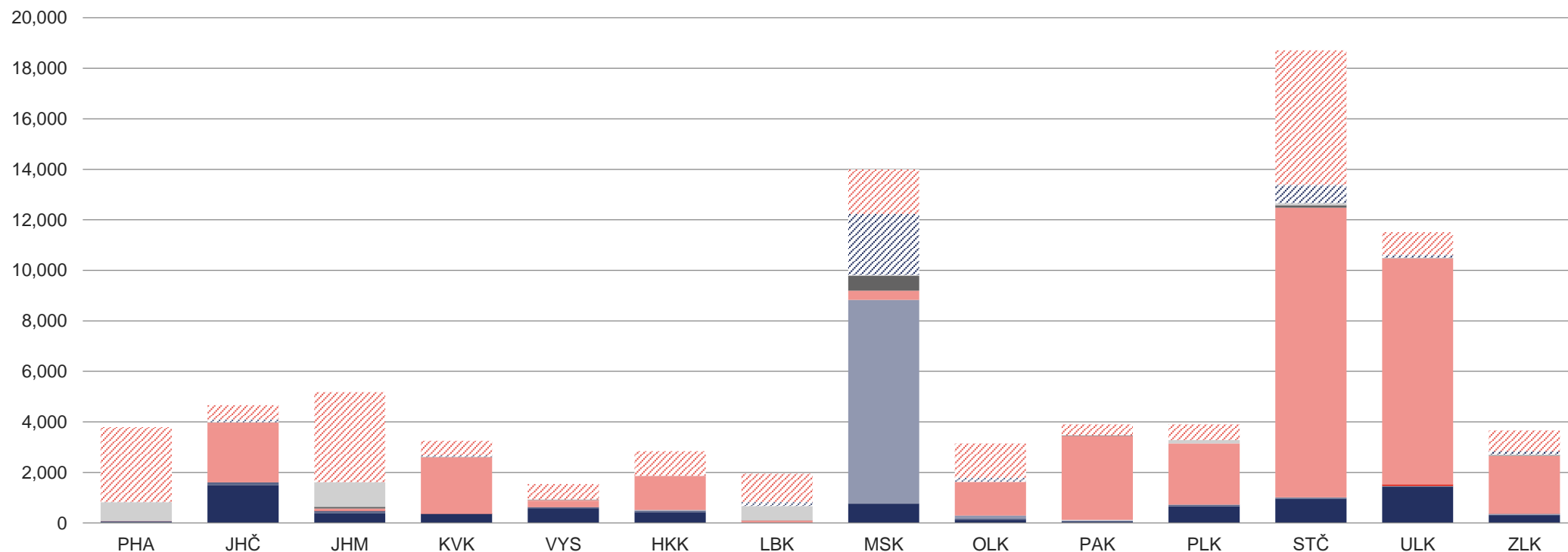
Czech Regions' share in heat supply



5.3 Heat supply by fuel in Czech Regions [TJ]

	PHA	JHČ	JHM	KVK	VYS	HKK	LBK	MSK	OLK	PAK	PLK	STČ	ULK	ZLK	Total
Heat supply	3,793.1	4,658.3	5,176.3	3,258.3	1,538.6	2,836.8	1,952.4	13,999.6	3,152.5	3,902.7	3,908.3	18,709.8	11,515.5	3,667.7	82,070.0
■ Biomass	0.0	1,503.0	391.8	361.8	578.1	429.8	2.4	759.0	131.2	38.7	653.7	956.9	1,437.5	311.2	7,555.1
■ Biogas	70.3	106.5	88.6	5.9	47.6	43.2	9.9	1.1	36.3	47.3	67.7	47.0	20.9	10.2	602.5
■ Hard coal	0.0	0.0	1.1	0.0	0.0	43.6	0.0	8,070.9	128.5	0.7	0.0	0.0	5.4	44.0	8,294.2
■ Electrical energy	2.8	0.0	4.6	0.0	0.0	0.0	0.0	0.7	0.0	33.1	2.7	11.8	0.0	0.2	55.9
■ Ambient energy (heat pump)	6.8	0.0	0.6	4.9	0.0	0.0	0.0	0.0	0.0	0.0	0.0	0.0	63.5	0.4	76.1
■ Solar energy (solar panel)	0.0	0.0	0.2	0.2	0.2	0.0	0.0	0.0	0.0	0.0	0.0	0.0	0.1	0.0	0.6
■ Brown coal	0.0	2,179.3	85.8	2,235.2	240.1	1,342.8	86.4	361.8	1,331.5	3,329.5	2,421.4	11,463.8	8,951.4	2,282.5	36,311.5
■ Nuclear fuel	0.0	192.4	0.0	0.0	41.5	0.0	0.0	0.0	0.0	0.0	0.0	0.0	0.0	0.0	233.9
■ Coke	0.0	0.0	0.0	0.0	0.0	0.0	0.0	0.0	0.0	0.0	0.0	0.0	0.0	0.0	0.0
■ Waste heat	0.0	0.0	68.8	0.2	18.6	0.0	2.7	598.5	0.0	26.6	0.0	90.6	3.9	12.7	822.5
■ Other liquid fuels	0.0	5.1	0.0	0.0	0.0	0.0	0.0	0.0	0.0	0.0	0.0	19.9	0.0	30.5	55.5
■ Other solid fuels	744.1	8.0	971.1	0.2	9.1	0.0	562.2	24.0	0.0	0.0	132.4	75.2	19.7	26.5	2,572.6
■ Other gases	0.0	0.6	0.0	0.0	0.0	0.0	0.0	2,415.1	0.0	0.0	0.4	692.1	91.4	109.5	3,309.2
■ Other	0.0	0.0	0.0	0.0	0.0	0.0	0.0	0.0	0.0	0.0	0.0	0.0	0.0	0.0	0.0
■ Fuel oils	1.1	97.7	2.2	66.7	0.7	14.5	167.1	4.0	158.3	0.3	2.3	31.0	26.4	0.9	573.3
■ Natural gas	2,968.0	565.8	3,561.5	583.5	602.7	963.0	1,121.7	1,764.5	1,366.6	426.4	627.7	5,321.4	895.3	839.1	21,607.1

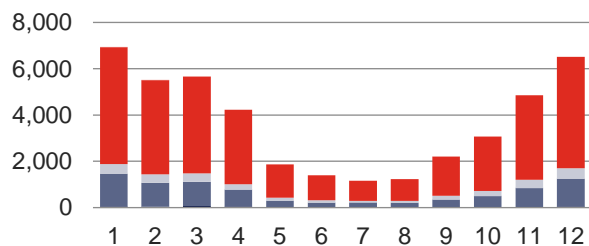
Heat supply in Czech Regions [TJ]



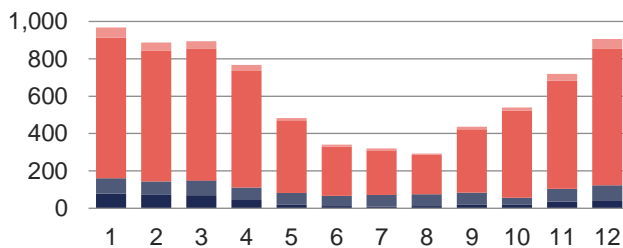
5.4 Supply of heat from coal, biomass and biogas [TJ]

	First quarter			Second quarter			Third quarter			Fourth quarter			Total
	January	February	March	April	May	June	July	August	September	October	November	December	
Supply of heat from coal	6,923.6	5,508.8	5,660.3	4,223.9	1,869.8	1,402.0	1,156.7	1,232.3	2,198.2	3,067.7	4,853.8	6,508.6	44,605.7
■ Sized hard coal	60.4	43.5	66.6	53.1	13.3	3.2	5.0	5.8	9.4	2.4	4.8	49.5	317.0
■ Industrial hard coal	1,387.8	1,028.1	1,044.7	715.1	280.5	202.1	211.7	208.5	333.5	494.1	839.4	1,190.4	7,935.7
■ Hard coal sludge and granulated	9.9	3.9	2.1	6.7	2.6	0.1	1.8	2.5	3.2	1.2	3.7	3.7	41.4
■ Sized brown coal	416.7	357.1	369.4	241.0	126.4	116.0	70.8	79.4	168.2	227.2	348.7	460.6	2,981.6
■ Industrial brown coal	5,048.6	4,076.0	4,177.3	3,207.9	1,447.0	1,080.5	867.4	936.2	1,683.9	2,342.8	3,657.1	4,804.3	33,329.0
■ Brown coal - briquettes	0.2	0.2	0.2	0.1	0.0	0.0	0.0	0.0	0.0	0.0	0.0	0.0	0.8
■ Brown coal - lignite	0.0	0.0	0.0	0.0	0.0	0.0	0.0	0.0	0.0	0.0	0.0	0.0	0.0
■ Brown coal - coal mud sludge	0.0	0.0	0.0	0.0	0.0	0.0	0.1	0.0	0.0	0.0	0.0	0.0	0.1
Supply of heat from biomass	967.0	886.4	894.7	767.9	483.4	340.5	319.9	293.5	436.3	539.1	720.2	906.4	7,555.1
■ Briquettes and pellets	78.2	72.2	69.9	43.5	19.0	11.2	7.5	11.5	19.2	18.6	34.9	38.4	424.1
■ Black liquor	82.2	71.3	78.3	67.3	63.1	55.7	64.5	63.6	64.0	38.1	69.4	84.0	801.4
■ Liquid biofuels	0.0	0.0	0.0	0.0	0.0	0.0	0.0	0.0	0.0	0.0	0.0	0.0	0.0
■ Other biomass	0.0	0.0	0.0	0.0	0.0	0.0	0.0	0.0	0.0	0.0	0.0	0.0	0.0
■ Fuel wood	0.0	0.0	0.9	0.0	0.0	0.0	0.1	0.0	0.0	0.0	0.0	0.0	1.0
■ Saw dust, bark, chips, wood waste	753.0	699.7	704.1	627.0	388.6	263.3	238.5	210.3	339.2	464.9	578.6	730.5	5,997.6
■ Straw and other vegetable materials	53.7	43.2	41.5	30.2	12.7	10.2	9.3	8.1	13.8	17.5	37.3	53.5	331.0
Supply of heat from biogas	66.3	56.0	60.5	57.0	43.3	35.0	31.5	31.5	39.9	52.3	60.9	68.3	602.5
■ Landfill gas	4.4	4.0	4.5	8.6	7.3	5.4	4.5	5.1	5.5	8.6	8.3	7.3	73.4
■ Wastewater sludge gas (WWTP)	0.5	0.7	0.8	0.4	0.8	0.7	0.6	0.7	0.6	0.8	0.7	0.6	7.8
■ Other biogas	61.4	51.3	55.2	48.0	35.2	28.9	26.4	25.8	33.8	42.9	52.0	60.4	521.3

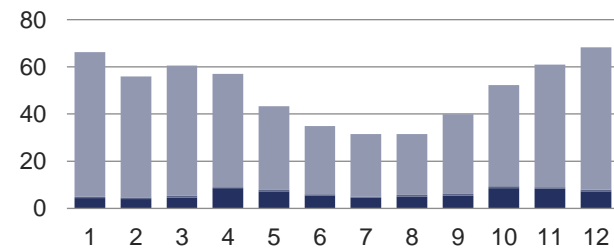
Supply of heat from coal [TJ]



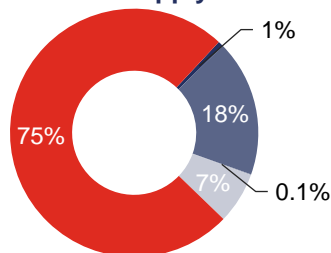
Supply of heat from biomass [TJ]



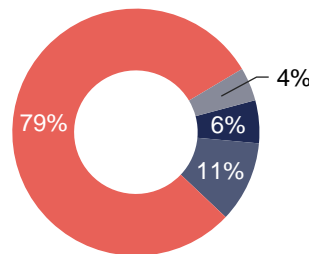
Supply of heat from biogas [TJ]



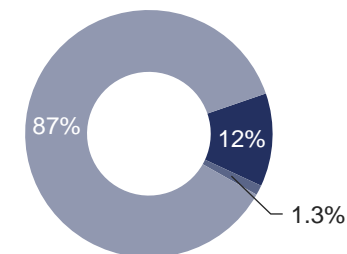
Coal categories' share in heat supply



Biomass categories' share in heat supply



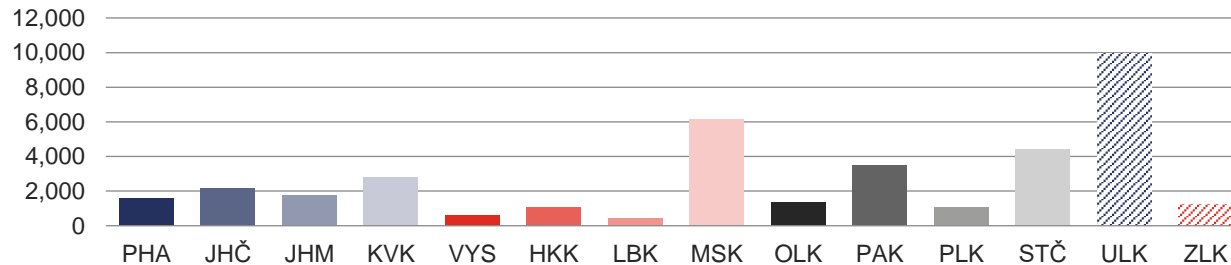
Biogas categories' share in heat supply



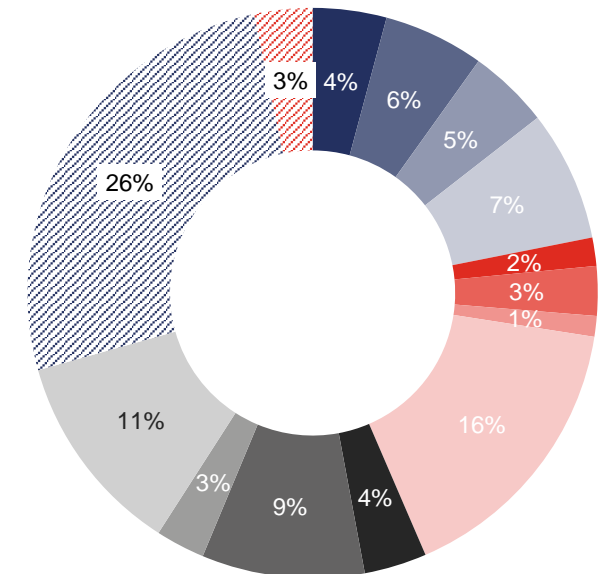
6 INSTALLED CAPACITY OF HEAT GENERATING PLANTS IN CZECH REGIONS [MW_t]

	First quarter			Second quarter			Third quarter			Fourth quarter		
	January	February	March	April	May	June	July	August	September	October	November	December
Installed capacity in the CR			38,926.0			38,877.0			38,667.1			38,105.3
	38,886.6	38,923.7		38,877.8	38,881.0	38,877.0	38,664.0	38,667.4	38,667.1	38,134.2	38,111.6	38,105.3
■ Prague (PHA)	2,103.4	2,103.1	2,103.1	2,110.2	2,111.1	2,111.1	2,104.0	2,104.9	2,104.9	1,637.7	1,592.6	1,592.6
■ Jihočeský Region (JHČ)	2,174.1	2,174.9	2,174.9	2,174.9	2,174.9	2,174.9	2,174.9	2,174.9	2,174.9	2,174.9	2,174.9	2,174.9
■ Jihomoravský Region (JHM)	1,876.6	1,875.6	1,876.5	1,757.4	1,757.4	1,757.4	1,753.1	1,753.1	1,753.1	1,744.9	1,744.9	1,744.9
■ Karlovarský Region (KVK)	2,833.9	2,833.9	2,833.9	2,824.7	2,824.7	2,824.7	2,824.7	2,824.7	2,824.7	2,824.7	2,824.7	2,824.6
■ Vysočina Region (VYS)	608.7	608.7	608.7	611.2	612.2	609.2	609.1	611.3	611.3	611.3	611.3	611.3
■ Královéhradecký Region (HKK)	1,068.7	1,068.7	1,068.7	1,068.7	1,068.7	1,068.7	1,068.7	1,068.7	1,068.7	1,068.4	1,068.4	1,068.4
■ Liberecký Region (LBK)	484.2	485.3	485.3	484.7	484.7	484.7	484.7	484.7	484.7	446.0	446.0	446.0
■ Moravskoslezský Region (MSK)	6,109.3	6,125.9	6,125.9	6,109.1	6,110.1	6,109.2	6,109.1	6,109.1	6,108.6	6,101.8	6,127.4	6,121.1
■ Olomoucký Region (OLK)	1,262.9	1,281.5	1,281.5	1,353.2	1,353.2	1,353.2	1,354.2	1,354.2	1,352.1	1,350.8	1,350.8	1,350.8
■ Pardubický Region (PAK)	3,723.8	3,724.2	3,724.2	3,724.2	3,724.2	3,724.2	3,516.8	3,516.8	3,516.8	3,516.8	3,516.8	3,516.9
■ Plzeňský Region (PLK)	1,064.3	1,064.3	1,064.3	1,064.3	1,064.3	1,064.3	1,064.3	1,064.3	1,064.3	1,064.3	1,064.3	1,064.3
■ Středočeský Region (STČ)	4,357.8	4,358.8	4,358.8	4,374.9	4,375.2	4,375.2	4,383.6	4,384.1	4,386.2	4,402.2	4,399.1	4,399.1
■ Ústecký Region (ULK)	9,932.6	9,932.6	9,932.6	9,932.6	9,932.6	9,932.6	9,932.6	9,932.6	9,932.6	9,933.6	9,933.6	9,933.5
■ Zlínský Region (ZLK)	1,286.3	1,286.3	1,287.6	1,287.6	1,287.6	1,287.6	1,284.2	1,283.9	1,284.1	1,256.8	1,256.8	1,256.8

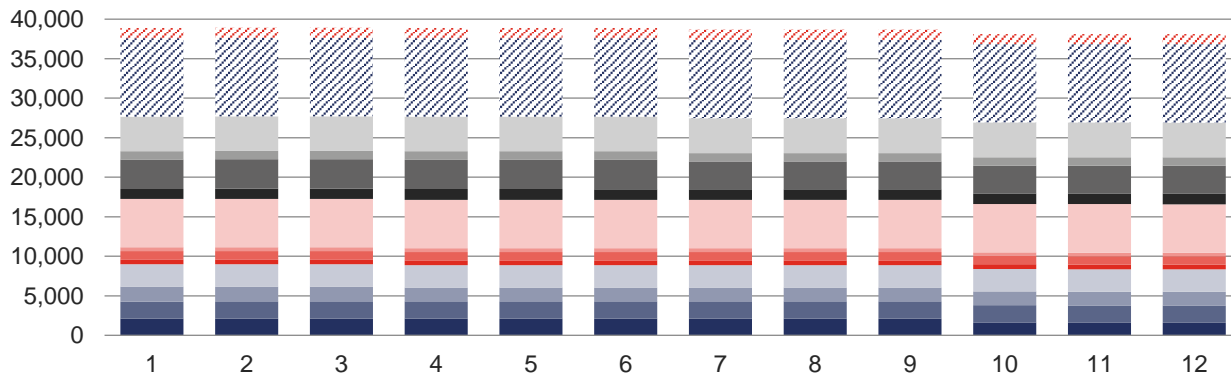
Installed capacity in Czech Regions [MW_t]



Czech Regions' share of heat generating plants' installed capacity



Installed capacity in the CR [MW_t]



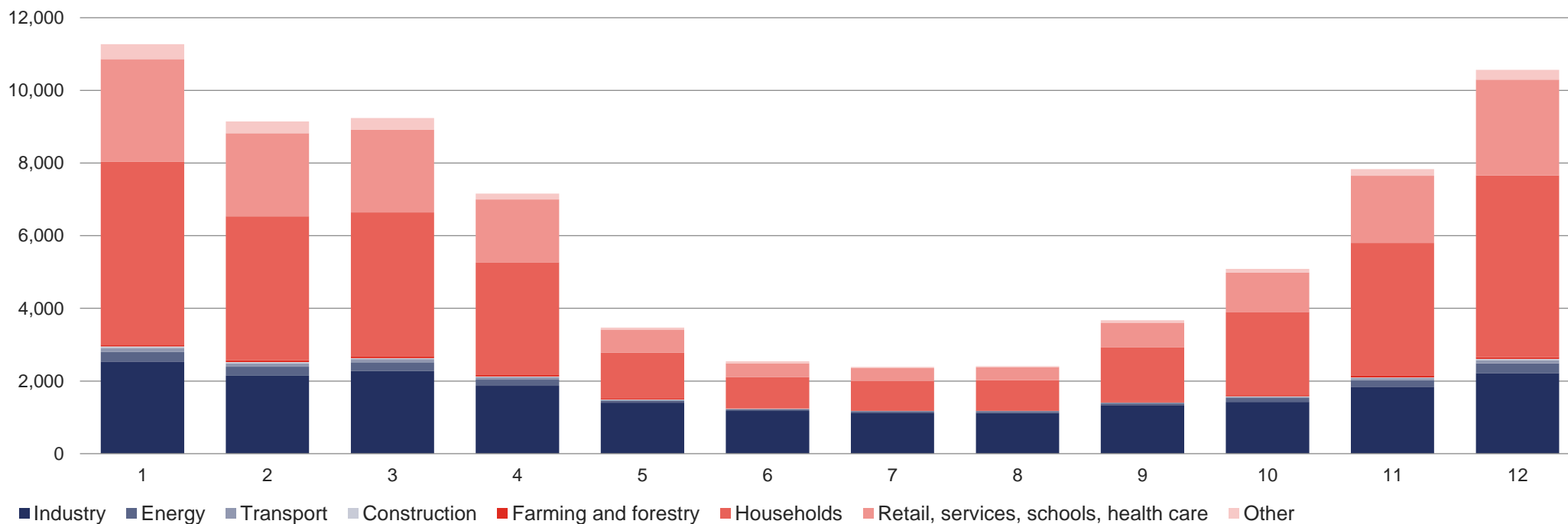
7 HEAT CONSUMPTION

7.1 Heat consumption by national economy sector [TJ]

	First quarter			Second quarter			Third quarter			Fourth quarter			Total
	January	February	March	April	May	June	July	August	September	October	November	December	
Heat consumption by national economy sector *	29,659.6			13,173.4			8,466.8			23,491.9			74,791.8
	11,274.4	9,145.4	9,239.8	7,159.0	3,474.1	2,540.3	2,385.9	2,409.8	3,671.2	5,089.0	7,835.7	10,567.3	
■ Industry	2,534.4	2,148.0	2,270.4	1,869.1	1,401.1	1,174.6	1,125.4	1,122.5	1,321.7	1,425.7	1,840.6	2,219.2	20,452.9
■ Energy	263.9	244.6	241.6	166.7	65.4	48.3	44.4	46.8	64.8	104.5	181.5	266.3	1,738.9
■ Transport	115.9	96.6	90.7	65.6	14.5	6.4	5.3	5.4	15.7	37.0	53.3	91.9	598.4
■ Construction	37.3	30.4	28.8	23.1	7.7	4.1	1.9	1.7	5.9	10.3	21.7	33.7	206.6
■ Farming and forestry	46.3	46.3	50.4	38.3	20.8	13.8	12.7	11.9	23.7	33.5	45.3	45.5	388.4
■ Households	5,036.7	3,967.0	3,962.4	3,106.3	1,265.7	861.4	808.6	837.1	1,499.2	2,287.5	3,658.8	4,998.2	32,289.0
■ Retail, services, schools, health care	2,825.0	2,291.9	2,274.1	1,730.3	643.1	380.7	357.0	354.1	673.3	1,087.9	1,848.0	2,640.2	17,105.5
■ Other	414.8	320.6	321.5	159.8	55.7	50.9	30.5	30.2	66.8	102.6	186.5	272.2	2,012.1

* Does not include unidentified heat distribution.

Heat consumption by national economy sector [TJ]

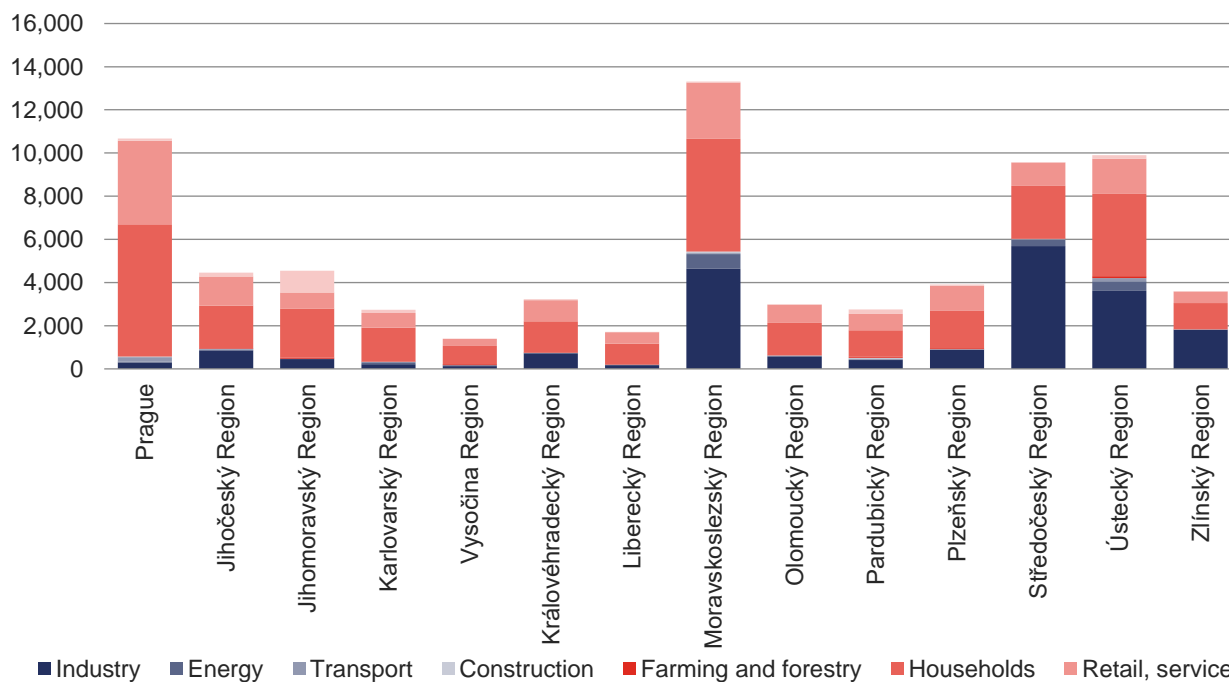


7.2 Heat consumption by national economy sector in Czech Regions [TJ]

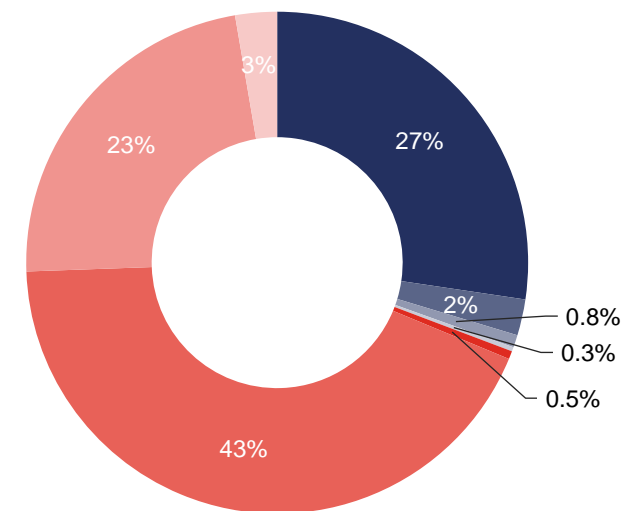
	Industry	Energy	Transport	Construction	Farming and forestry	Households	Retail, services, schools, health care	Other	Total
Total CR *	20,452.9	1,738.9	598.4	206.6	388.4	32,289.0	17,105.5	2,012.1	74,791.8
Prague	299.3	43.4	201.8	34.9	5.5	6,111.0	3,873.5	98.1	10,667.5
Jihočeský Region	859.9	27.7	44.4	5.0	22.4	1,974.4	1,344.6	185.5	4,463.9
Jihomoravský Region	460.9	5.8	0.6	0.4	68.0	2,267.5	741.1	1,003.4	4,547.6
Karlovarský Region	210.7	93.2	14.8	15.7	6.4	1,561.3	693.5	145.6	2,741.3
Vysočina Region	126.7	41.5	3.2	4.0	48.7	833.9	331.5	7.5	1,397.0
Královéhradecký Region	726.8	6.2	16.6	6.8	1.1	1,453.3	968.4	53.6	3,232.8
Liberecký Region	175.9	6.7	6.6	1.2	9.9	962.9	537.9	12.2	1,713.3
Moravskoslezský Region	4,634.4	682.4	47.6	67.2	14.9	5,204.9	2,610.2	53.5	13,315.2
Olomoucký Region	552.8	52.8	1.0	21.9	9.2	1,488.0	852.3	15.4	2,993.3
Pardubický Region	410.6	23.1	56.9	22.2	42.5	1,235.2	762.1	195.4	2,748.1
Plzeňský Region	881.9	2.8	30.6	3.2	42.0	1,755.3	1,139.6	52.6	3,907.9
Středočeský Region	5,685.4	303.4	22.6	1.2	21.1	2,438.3	1,083.6	15.5	9,571.1
Ústecký Region	3,620.0	445.3	135.5	10.5	85.9	3,810.4	1,625.8	170.5	9,903.8
Zlínský Region	1,807.6	4.5	16.2	12.5	10.8	1,192.5	541.6	3.3	3,589.0

* Does not include unidentified heat distribution.

Heat consumption in Czech Regions by national economy sector [TJ]



National economy sectors' shares of heat consumption in the CR



8 HEAT PRODUCTION, SUPPLY AND CONSUMPTION BY CZECH REGION

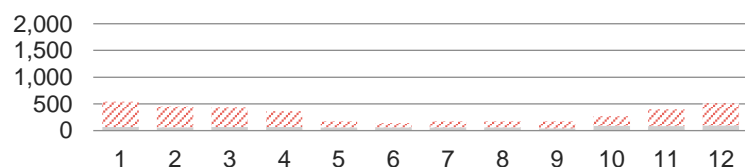
8.1 Heat production, supply and consumption: Prague



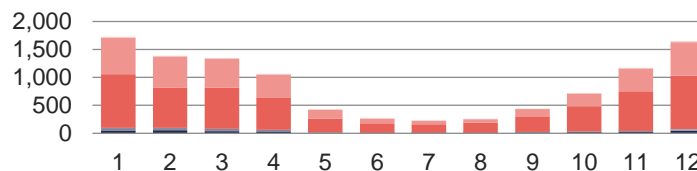
	First quarter			Second quarter			Third quarter			Fourth quarter			Total	Share in CR
	January	February	March	April	May	June	July	August	September	October	November	December		
Total installed capacity [MWt]	2,103.4	2,103.1	2,103.1	2,110.2	2,111.1	2,111.1	2,104.0	2,104.9	2,104.9	1,637.7	1,592.6	1,592.6	1,592.6	4.2%
Gross heat production [TJ]	692.2	568.4	571.3	459.6	252.1	209.8	243.9	238.6	258.3	387.2	515.6	653.3	5,050.1	3.3%
Heat supply by fuel [TJ]	542.4	447.2	436.4	361.9	173.5	136.3	173.1	172.6	171.9	267.4	397.6	512.8	3,793.1	4.6%
■ Biomass	0.0	0.0	0.0	0.0	0.0	0.0	0.0	0.0	0.0	0.0	0.0	0.0	0.0	0.0%
■ Biogas	4.1	3.8	4.3	8.0	6.8	5.2	4.5	4.8	5.3	8.2	8.1	7.2	70.3	11.7%
■ Hard coal	0.0	0.0	0.0	0.0	0.0	0.0	0.0	0.0	0.0	0.0	0.0	0.0	0.0	0.0%
■ Electrical energy	0.0	0.0	0.0	0.0	0.0	0.5	1.0	1.1	0.2	0.0	0.0	0.0	2.8	5.1%
■ Ambient energy (heat pump)	0.5	0.4	0.2	0.5	0.7	0.7	0.5	0.7	1.0	1.1	0.3	0.3	6.8	8.9%
■ Solar energy (solar panel)	0.0	0.0	0.0	0.0	0.0	0.0	0.0	0.0	0.0	0.0	0.0	0.0	0.0	0.0%
■ Brown coal	0.0	0.0	0.0	0.0	0.0	0.0	0.0	0.0	0.0	0.0	0.0	0.0	0.0	0.0%
■ Nuclear fuel	0.0	0.0	0.0	0.0	0.0	0.0	0.0	0.0	0.0	0.0	0.0	0.0	0.0	0.0%
■ Coke	0.0	0.0	0.0	0.0	0.0	0.0	0.0	0.0	0.0	0.0	0.0	0.0	0.0	0.0%
■ Waste heat	0.0	0.0	0.0	0.0	0.0	0.0	0.0	0.0	0.0	0.0	0.0	0.0	0.0	0.0%
■ Other liquid fuels	0.0	0.0	0.0	0.0	0.0	0.0	0.0	0.0	0.0	0.0	0.0	0.0	0.0	0.0%
■ Other solid fuels	61.8	55.1	62.6	57.5	55.6	55.1	56.2	55.6	36.5	83.8	75.1	89.0	744.1	28.9%
■ Other gases	0.0	0.0	0.0	0.0	0.0	0.0	0.0	0.0	0.0	0.0	0.0	0.0	0.0	0.0%
■ Other	0.0	0.0	0.0	0.0	0.0	0.0	0.0	0.0	0.0	0.0	0.0	0.0	0.0	0.0%
■ Fuel oils	0.1	0.4	0.4	0.1	0.0	0.0	0.1	0.0	0.0	0.0	0.0	0.0	1.1	0.2%
■ Natural gas	475.8	387.5	369.0	295.8	110.3	74.7	110.9	110.4	129.0	174.3	314.0	416.3	2,968.0	13.7%
Heat supply from Středočeský Region	1,374.9	1,100.8	1,088.5	850.7	333.8	240.8	149.7	165.3	398.8	565.2	950.7	1,286.5	8,505.8	
Heat consumption by economic sector*	1,727.5	1,386.8	1,345.3	1,063.2	427.1	263.5	227.6	254.1	437.2	718.8	1,171.0	1,645.6	10,667.5	14.3%
■ Industry	47.7	42.0	37.5	31.0	11.4	7.3	7.1	8.0	16.9	18.5	29.0	42.9	299.3	1.5%
■ Energy	4.4	15.0	6.7	4.8	1.4	0.5	0.3	0.2	0.5	3.9	2.2	3.4	43.4	2.5%
■ Transport	42.6	37.8	33.0	24.8	5.3	2.6	2.0	2.2	6.3	11.8	8.6	24.8	201.8	33.7%
■ Construction	5.5	6.2	5.0	4.4	1.5	0.6	0.4	0.4	0.8	1.5	3.7	5.0	34.9	16.9%
■ Farming and forestry	1.1	0.8	0.7	0.4	0.3	0.1	0.0	0.1	0.2	0.3	0.6	0.8	5.5	1.4%
■ Households	953.9	718.4	738.4	569.3	243.9	165.0	152.8	180.6	280.6	447.8	709.1	951.0	6,111.0	18.9%
■ Retail, services, schools, health care	653.4	552.8	511.0	418.0	160.1	86.6	64.2	61.9	129.5	229.4	406.2	600.4	3,873.5	22.6%
■ Other	18.9	13.7	13.1	10.5	3.1	0.8	0.7	0.7	2.3	5.5	11.5	17.3	98.1	4.9%

* The difference between supply and consumption includes losses of bought heat and a part of unidentified heat distribution.

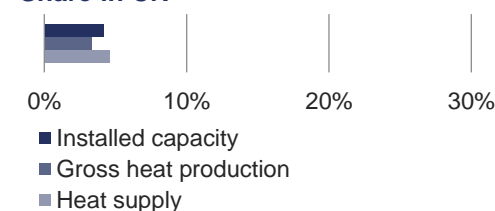
Heat supply by fuel [TJ]



Heat consumption by national economy sector [TJ]



Share in CR



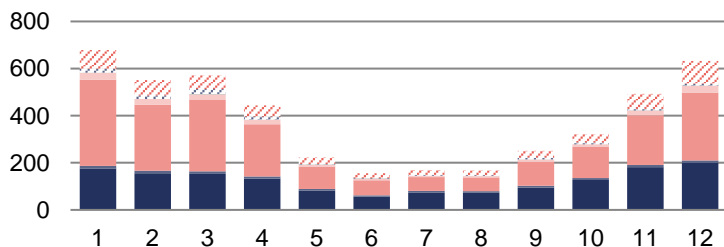
8.2 Heat production, supply and consumption: Jihočeský Region



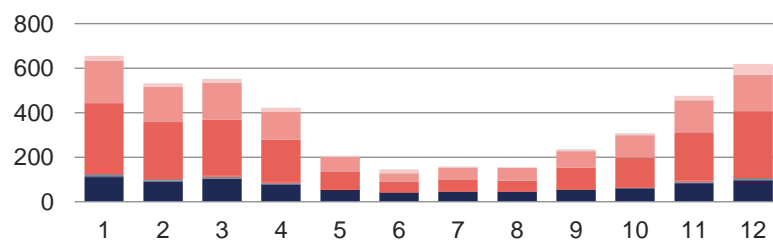
	First quarter			Second quarter			Third quarter			Fourth quarter			Total	Share in CR
	January	February	March	April	May	June	July	August	September	October	November	December		
Total installed capacity [MWt]	2,174.1	2,174.9	2,174.9	2,174.9	2,174.9	2,174.9	2,174.9	2,174.9	2,174.9	2,174.9	2,174.9	2,174.9	2,174.9	5.7%
Gross heat production [TJ]	961.3	794.8	837.7	685.4	417.7	297.6	344.2	342.0	434.4	527.5	724.9	907.2	7,274.7	4.8%
Heat supply by fuel [TJ]	678.3	551.3	571.1	443.9	222.7	155.9	169.8	168.2	250.8	321.6	492.4	632.6	4,658.3	5.7%
■ Biomass	175.4	155.9	152.7	132.9	81.7	55.9	74.2	73.3	94.7	126.4	181.3	198.6	1,503.0	19.9%
■ Biogas	11.7	10.4	11.1	9.7	7.6	5.9	6.7	6.8	7.9	8.6	9.3	10.8	106.5	17.7%
■ Hard coal	0.0	0.0	0.0	0.0	0.0	0.0	0.0	0.0	0.0	0.0	0.0	0.0	0.0	0.0%
■ Electrical energy	0.0	0.0	0.0	0.0	0.0	0.0	0.0	0.0	0.0	0.0	0.0	0.0	0.0	0.0%
■ Ambient energy (heat pump)	0.0	0.0	0.0	0.0	0.0	0.0	0.0	0.0	0.0	0.0	0.0	0.0	0.0	0.0%
■ Solar energy (solar panel)	0.0	0.0	0.0	0.0	0.0	0.0	0.0	0.0	0.0	0.0	0.0	0.0	0.0	0.0%
■ Brown coal	365.6	280.5	303.2	221.3	94.9	63.6	58.7	58.3	101.4	131.6	211.5	288.7	2,179.3	6.0%
■ Nuclear fuel	29.5	23.4	22.9	19.4	8.4	5.8	5.5	5.6	10.1	12.4	20.2	29.3	192.4	82.3%
■ Coke	0.0	0.0	0.0	0.0	0.0	0.0	0.0	0.0	0.0	0.0	0.0	0.0	0.0	0.0%
■ Waste heat	0.0	0.0	0.0	0.0	0.0	0.0	0.0	0.0	0.0	0.0	0.0	0.0	0.0	0.0%
■ Other liquid fuels	0.0	0.0	1.4	0.0	0.0	2.6	0.0	0.0	0.0	0.0	0.5	0.6	5.1	9.1%
■ Other solid fuels	0.9	0.7	0.7	0.8	0.7	0.7	0.6	0.4	0.7	0.7	0.8	0.4	8.0	0.3%
■ Other gases	0.1	0.1	0.1	0.1	0.0	0.0	0.0	0.0	0.0	0.0	0.1	0.1	0.6	0.0%
■ Other	0.0	0.0	0.0	0.0	0.0	0.0	0.0	0.0	0.0	0.0	0.0	0.0	0.0	0.0%
■ Fuel oils	15.2	14.9	21.0	11.7	2.1	0.0	3.7	2.9	7.6	6.0	5.5	7.2	97.7	17.0%
■ Natural gas	79.9	65.4	58.0	48.1	27.2	21.3	20.4	20.9	28.3	36.0	63.1	97.1	565.8	2.6%
Heat consumption by economic sector*	655.2	532.1	551.4	422.2	206.3	145.2	157.6	155.9	236.1	308.1	476.1	617.5	4,463.9	6.0%
■ Industry	111.2	91.2	101.9	77.5	53.5	41.3	44.5	44.5	54.2	60.4	83.9	95.9	859.9	4.2%
■ Energy	4.4	3.5	3.6	3.0	1.1	0.7	0.6	0.6	1.3	1.8	3.0	4.3	27.7	1.6%
■ Transport	8.9	7.3	7.1	4.9	0.5	0.2	0.2	0.2	0.8	2.3	4.8	7.2	44.4	7.4%
■ Construction	0.7	0.6	0.7	0.5	0.2	0.2	0.1	0.1	0.3	0.3	0.6	0.7	5.0	2.4%
■ Farming and forestry	3.0	2.9	3.1	2.6	1.2	0.5	0.6	0.5	1.3	1.7	2.3	2.6	22.4	5.8%
■ Households	314.6	252.2	252.8	190.6	76.6	46.6	51.1	48.9	94.6	132.2	218.0	296.3	1,974.4	6.1%
■ Retail, services, schools, health care	191.1	158.0	165.1	126.8	68.1	38.1	56.1	57.9	75.3	100.7	142.8	164.4	1,344.6	7.9%
■ Other	21.3	16.4	17.0	16.3	5.1	17.6	4.4	3.2	8.5	8.7	20.9	46.1	185.5	9.2%

* The difference between supply and consumption includes losses of bought heat and a part of unidentified heat distribution.

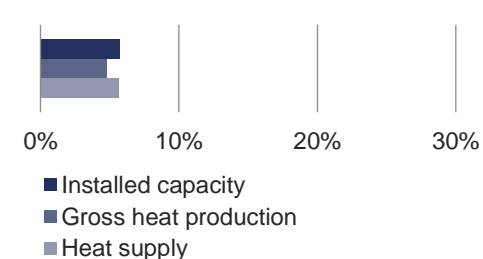
Heat supply by fuel [TJ]



Heat consumption by national economy sector [TJ]



Share in CR



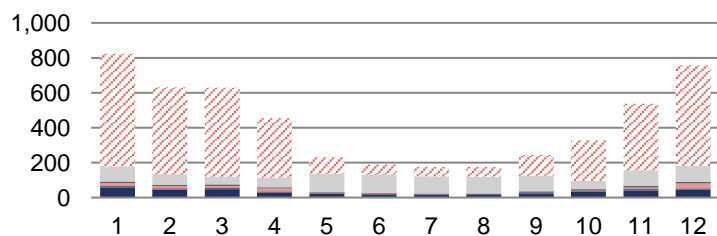
8.3 Heat production, supply and consumption: Jihomoravský Region



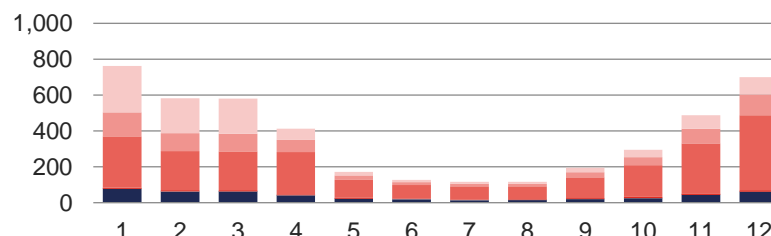
	First quarter			Second quarter			Third quarter			Fourth quarter			Total	Share in CR
	January	February	March	April	May	June	July	August	September	October	November	December		
Total installed capacity [MWt]	1,876.6	1,875.6	1,876.5	1,757.4	1,757.4	1,757.4	1,753.1	1,753.1	1,753.1	1,744.9	1,744.9	1,744.9	1,744.9	4.6%
Gross heat production [TJ]	1,057.0	831.9	856.7	629.4	348.9	283.5	272.5	272.6	397.2	577.4	777.0	975.1	7,279.3	4.8%
Heat supply by fuel [TJ]	822.7	630.5	628.7	454.5	230.6	189.7	176.3	177.0	243.7	329.0	536.7	756.8	5,176.3	6.3%
■ Biomass	55.8	46.2	48.1	28.9	21.8	18.5	16.4	14.8	23.7	32.7	41.4	43.4	391.8	5.2%
■ Biogas	9.5	7.0	7.9	6.8	6.8	6.4	3.9	5.2	6.9	8.9	8.8	10.4	88.6	14.7%
■ Hard coal	0.2	0.2	0.1	0.3	0.0	0.0	0.0	0.0	0.0	0.0	0.1	0.3	1.1	0.0%
■ Electrical energy	0.5	0.4	0.6	0.4	0.4	0.1	0.1	0.5	0.4	0.4	0.3	0.5	4.6	8.2%
■ Ambient energy (heat pump)	0.1	0.1	0.1	0.1	0.0	0.0	0.0	0.0	0.0	0.1	0.0	0.1	0.6	0.8%
■ Solar energy (solar panel)	0.0	0.0	0.0	0.0	0.0	0.0	0.0	0.0	0.0	0.0	0.0	0.0	0.2	38.7%
■ Brown coal	16.2	12.0	9.2	14.8	0.2	0.1	0.1	0.1	0.2	0.2	6.9	25.7	85.8	0.2%
■ Nuclear fuel	0.0	0.0	0.0	0.0	0.0	0.0	0.0	0.0	0.0	0.0	0.0	0.0	0.0	0.0%
■ Coke	0.0	0.0	0.0	0.0	0.0	0.0	0.0	0.0	0.0	0.0	0.0	0.0	0.0	0.0%
■ Waste heat	9.4	8.4	9.0	7.3	3.0	1.4	1.7	1.7	3.3	5.3	8.2	10.1	68.8	8.4%
■ Other liquid fuels	0.0	0.0	0.0	0.0	0.0	0.0	0.0	0.0	0.0	0.0	0.0	0.0	0.0	0.0%
■ Other solid fuels	86.8	59.1	42.8	55.9	106.2	104.2	99.3	97.8	89.6	48.6	90.1	90.6	971.1	37.7%
■ Other gases	0.0	0.0	0.0	0.0	0.0	0.0	0.0	0.0	0.0	0.0	0.0	0.0	0.0	0.0%
■ Other	0.0	0.0	0.0	0.0	0.0	0.0	0.0	0.0	0.0	0.0	0.0	0.0	0.0	0.0%
■ Fuel oils	0.0	0.0	0.0	0.0	0.0	0.0	0.3	0.7	0.9	0.2	0.0	0.0	2.2	0.4%
■ Natural gas	644.2	497.1	510.8	339.9	92.2	58.8	54.4	56.1	118.6	232.7	380.8	575.8	3,561.5	16.5%
Heat consumption by economic sector*	762.6	582.9	581.1	412.4	172.0	127.9	115.6	115.9	194.4	294.6	487.7	700.5	4,547.6	6.1%
■ Industry	76.4	61.7	62.4	41.3	22.4	19.1	13.6	15.1	20.2	25.1	43.0	60.7	460.9	2.3%
■ Energy	0.9	0.7	0.7	0.5	0.3	0.2	0.2	0.2	0.3	0.4	0.6	0.8	5.8	0.3%
■ Transport	0.1	0.1	0.1	0.0	0.0	0.0	0.0	0.0	0.0	0.0	0.1	0.1	0.6	0.1%
■ Construction	0.1	0.1	0.1	0.0	0.0	0.0	0.0	0.0	0.0	0.0	0.0	0.1	0.4	0.2%
■ Farming and forestry	6.3	7.5	6.9	5.4	5.2	3.1	3.1	2.9	4.0	7.8	7.9	8.0	68.0	17.5%
■ Households	286.9	217.6	215.1	234.8	100.0	76.8	74.7	72.5	116.4	175.0	279.1	418.7	2,267.5	7.0%
■ Retail, services, schools, health care	132.8	99.5	98.4	68.3	24.0	16.1	14.6	14.8	28.3	46.2	82.6	115.4	741.1	4.3%
■ Other	259.1	195.7	197.5	62.1	20.2	12.5	9.5	10.3	25.2	40.0	74.4	96.8	1,003.4	49.9%

* The difference between supply and consumption includes losses of bought heat and a part of unidentified heat distribution.

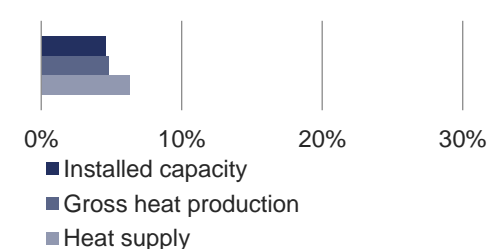
Heat supply by fuel [TJ]



Heat consumption by national economy sector [TJ]



Share in CR



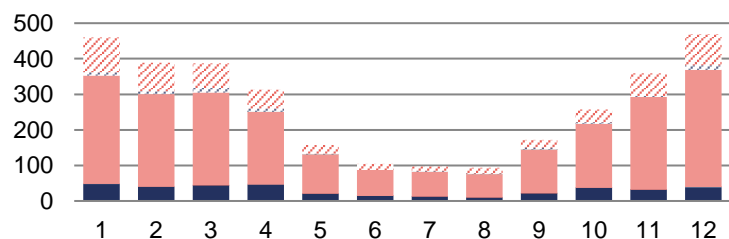
8.4 Heat production, supply and consumption: Karlovarský Region



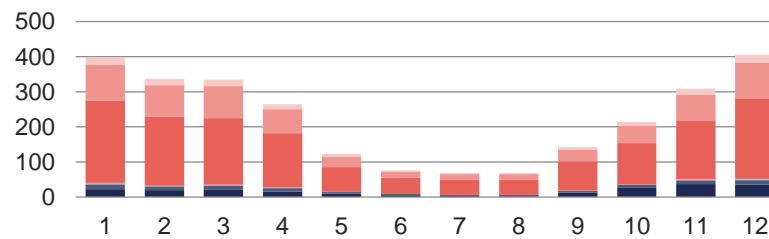
	First quarter			Second quarter			Third quarter			Fourth quarter			Total	Share in CR
	January	February	March	April	May	June	July	August	September	October	November	December		
Total installed capacity [MWt]	2,833.9	2,833.9	2,833.9	2,824.7	2,824.7	2,824.7	2,824.7	2,824.7	2,824.7	2,824.7	2,824.7	2,824.6	2,824.6	7.4%
Gross heat production [TJ]	1,101.5	1,013.0	1,071.6	970.5	761.6	620.0	315.4	345.3	446.7	766.7	920.8	1,102.8	9,436.0	6.2%
Heat supply by fuel [TJ]	459.5	388.6	387.0	312.8	157.6	104.1	97.4	93.7	171.6	257.5	359.2	469.2	3,258.3	4.0%
■ Biomass	47.3	39.7	43.7	46.2	20.9	14.0	12.6	9.6	21.1	36.5	31.9	38.3	361.8	4.8%
■ Biogas	0.8	0.7	0.7	0.7	0.2	0.2	0.1	0.2	0.5	0.4	0.5	0.8	5.9	1.0%
■ Hard coal	0.0	0.0	0.0	0.0	0.0	0.0	0.0	0.0	0.0	0.0	0.0	0.0	0.0	0.0%
■ Electrical energy	0.0	0.0	0.0	0.0	0.0	0.0	0.0	0.0	0.0	0.0	0.0	0.0	0.0	0.0%
■ Ambient energy (heat pump)	0.5	0.5	0.5	0.5	0.4	0.3	0.3	0.3	0.3	0.4	0.3	0.5	4.9	6.4%
■ Solar energy (solar panel)	0.0	0.0	0.0	0.0	0.0	0.0	0.0	0.0	0.0	0.0	0.0	0.0	0.2	25.2%
■ Brown coal	304.5	259.9	260.6	203.5	109.4	72.2	68.5	65.0	123.1	179.7	259.3	329.4	2,235.2	6.2%
■ Nuclear fuel	0.0	0.0	0.0	0.0	0.0	0.0	0.0	0.0	0.0	0.0	0.0	0.0	0.0	0.0%
■ Coke	0.0	0.0	0.0	0.0	0.0	0.0	0.0	0.0	0.0	0.0	0.0	0.0	0.0	0.0%
■ Waste heat	0.0	0.0	0.0	0.0	0.0	0.0	0.0	0.0	0.0	0.0	0.0	0.0	0.2	0.0%
■ Other liquid fuels	0.0	0.0	0.0	0.0	0.0	0.0	0.0	0.0	0.0	0.0	0.0	0.0	0.0	0.0%
■ Other solid fuels	0.0	0.0	0.0	0.2	0.0	0.0	0.0	0.0	0.0	0.0	0.0	0.0	0.2	0.0%
■ Other gases	0.0	0.0	0.0	0.0	0.0	0.0	0.0	0.0	0.0	0.0	0.0	0.0	0.0	0.0%
■ Other	0.0	0.0	0.0	0.0	0.0	0.0	0.0	0.0	0.0	0.0	0.0	0.0	0.0	0.0%
■ Fuel oils	8.3	7.7	11.8	9.1	1.7	0.0	1.8	1.8	4.9	4.2	2.8	12.5	66.7	11.6%
■ Natural gas	98.0	80.0	69.8	52.6	24.9	17.2	14.0	16.6	21.6	36.3	64.5	87.8	583.5	2.7%
Heat consumption by economic sector*	398.3	336.8	334.2	264.2	122.8	76.4	68.7	68.5	143.2	214.3	308.5	405.3	2,741.3	3.7%
■ Industry	22.5	19.5	20.4	15.9	9.2	5.4	3.7	2.7	12.3	26.2	37.4	35.6	210.7	1.0%
■ Energy	12.4	10.5	11.0	9.1	5.1	3.5	2.3	3.2	5.6	8.0	9.9	12.5	93.2	5.4%
■ Transport	2.3	1.9	1.9	1.5	0.6	0.4	0.4	0.3	0.8	1.1	1.6	2.2	14.8	2.5%
■ Construction	2.3	1.9	1.9	1.5	0.6	0.3	0.2	0.3	0.7	1.1	2.2	2.8	15.7	7.6%
■ Farming and forestry	0.9	0.8	0.8	0.8	0.2	0.3	0.1	0.2	0.6	0.5	0.5	0.9	6.4	1.7%
■ Households	234.3	195.2	189.2	153.0	70.1	45.2	42.6	41.8	82.1	116.8	165.4	225.8	1,561.3	4.8%
■ Retail, services, schools, health care	102.0	88.7	90.6	68.8	30.1	17.5	15.9	16.3	33.8	50.1	75.6	104.0	693.5	4.1%
■ Other	21.6	18.2	18.5	13.7	7.0	3.9	3.6	3.6	7.4	10.6	15.9	21.6	145.6	7.2%

* The difference between supply and consumption includes losses of bought heat and a part of unidentified heat distribution.

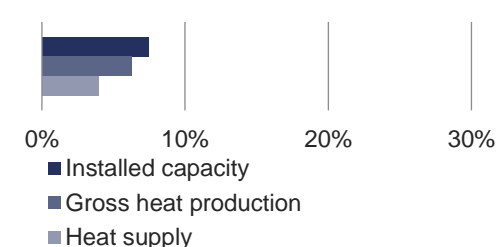
Heat supply by fuel [TJ]



Heat consumption by national economy sector [TJ]



Share in CR



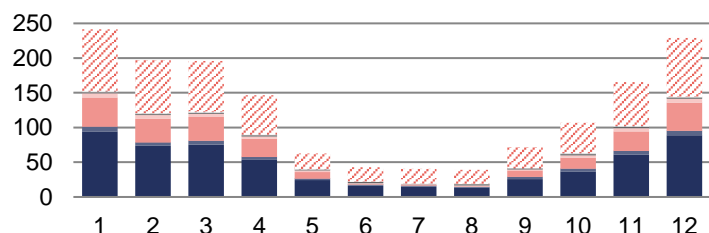
8.5 Heat production, supply and consumption: Vysočina Region



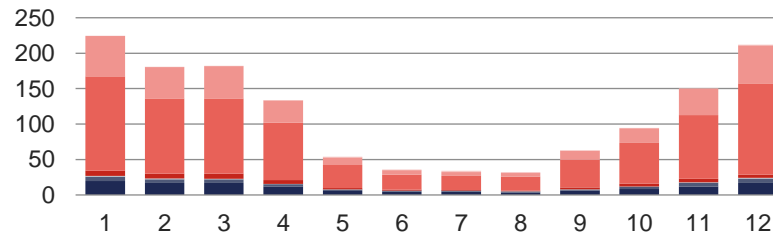
	First quarter			Second quarter			Third quarter			Fourth quarter			Total	Share in CR
	January	February	March	April	May	June	July	August	September	October	November	December		
Total installed capacity [MWt]	608.7	608.7	608.7	611.2	612.2	609.2	609.1	611.3	611.3	611.3	611.3	611.3	611.3	1.6%
Gross heat production [TJ]	467.6	397.4	410.5	291.5	188.4	174.1	141.0	169.7	225.6	274.3	341.5	452.2	3,533.7	2.3%
Heat supply by fuel [TJ]	241.3	197.2	195.8	146.7	62.8	42.7	40.4	38.9	71.7	106.9	165.3	229.1	1,538.6	1.9%
■ Biomass	94.7	73.5	75.7	53.6	24.4	15.9	14.7	13.5	25.7	36.7	60.7	88.9	578.1	7.7%
■ Biogas	6.6	5.1	5.5	3.9	2.1	1.8	1.8	1.3	3.0	4.1	5.7	6.6	47.6	7.9%
■ Hard coal	0.0	0.0	0.0	0.0	0.0	0.0	0.0	0.0	0.0	0.0	0.0	0.0	0.0	0.0%
■ Electrical energy	0.0	0.0	0.0	0.0	0.0	0.0	0.0	0.0	0.0	0.0	0.0	0.0	0.0	0.1%
■ Ambient energy (heat pump)	0.0	0.0	0.0	0.0	0.0	0.0	0.0	0.0	0.0	0.0	0.0	0.0	0.0	0.0%
■ Solar energy (solar panel)	0.0	0.0	0.0	0.0	0.0	0.0	0.0	0.0	0.0	0.0	0.0	0.0	0.2	24.8%
■ Brown coal	41.8	34.0	33.8	26.1	9.5	0.5	0.5	0.4	9.3	15.7	27.9	40.5	240.1	0.7%
■ Nuclear fuel	6.1	5.4	4.9	3.6	1.9	1.4	1.4	1.4	1.6	3.4	4.8	5.6	41.5	17.7%
■ Coke	0.0	0.0	0.0	0.0	0.0	0.0	0.0	0.0	0.0	0.0	0.0	0.0	0.0	0.0%
■ Waste heat	1.7	1.4	1.3	1.5	1.6	2.0	0.5	1.7	1.5	1.9	1.8	1.5	18.6	2.3%
■ Other liquid fuels	0.0	0.0	0.0	0.0	0.0	0.0	0.0	0.0	0.0	0.0	0.0	0.0	0.0	0.0%
■ Other solid fuels	1.1	1.3	1.1	1.2	0.3	0.3	0.2	0.3	0.4	1.2	1.0	0.9	9.1	0.4%
■ Other gases	0.0	0.0	0.0	0.0	0.0	0.0	0.0	0.0	0.0	0.0	0.0	0.0	0.0	0.0%
■ Other	0.0	0.0	0.0	0.0	0.0	0.0	0.0	0.0	0.0	0.0	0.0	0.0	0.0	0.0%
■ Fuel oils	0.1	0.1	0.1	0.1	0.0	0.0	0.0	0.0	0.0	0.1	0.1	0.1	0.7	0.1%
■ Natural gas	89.1	76.4	73.4	56.7	22.8	20.8	21.3	20.2	30.0	43.8	63.2	84.9	602.7	2.8%
Heat consumption by economic sector*	224.5	180.7	182.2	133.4	54.1	36.0	34.1	32.1	62.8	94.7	150.5	212.0	1,397.0	1.9%
■ Industry	19.4	16.8	16.9	11.5	5.8	4.6	4.6	3.6	6.1	8.3	12.2	17.1	126.7	0.6%
■ Energy	6.1	5.4	4.9	3.6	1.9	1.4	1.4	1.4	1.6	3.4	4.8	5.6	41.5	2.4%
■ Transport	0.6	0.4	0.4	0.3	0.1	0.0	0.0	0.0	0.1	0.2	0.4	0.6	3.2	0.5%
■ Construction	0.8	0.5	0.7	0.4	0.1	0.0	0.0	0.0	0.1	0.2	0.4	0.7	4.0	1.9%
■ Farming and forestry	7.3	6.9	7.0	5.0	1.9	1.3	1.2	1.2	2.9	4.2	5.2	4.8	48.7	12.5%
■ Households	133.0	106.1	106.1	81.0	32.8	21.3	19.9	19.6	38.8	56.9	89.6	128.7	833.9	2.6%
■ Retail, services, schools, health care	56.8	44.3	45.7	31.4	10.8	6.3	5.4	5.2	13.2	21.1	37.4	53.8	331.5	1.9%
■ Other	0.4	0.3	0.3	0.1	0.9	1.1	1.7	1.1	0.1	0.4	0.4	0.7	7.5	0.4%

* The difference between supply and consumption includes losses of bought heat and a part of unidentified heat distribution.

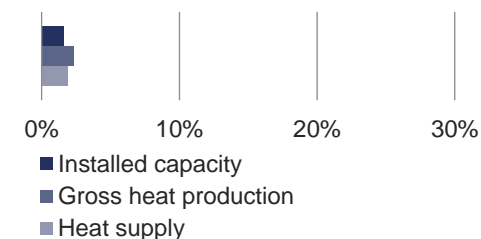
Heat supply by fuel [TJ]



Heat consumption by national economy sector [TJ]



Share in CR



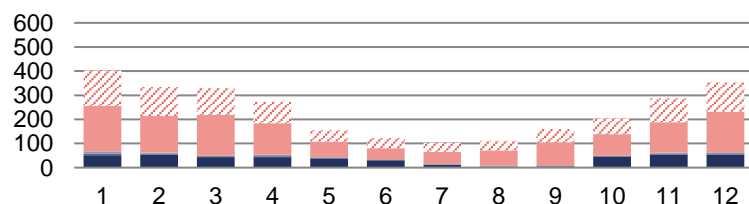
8.6 Heat production, supply and consumption: Královéhradecký Region



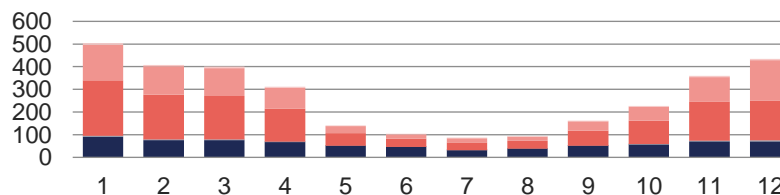
	First quarter			Second quarter			Third quarter			Fourth quarter			Total	Share in CR
	January	February	March	April	May	June	July	August	September	October	November	December		
Total installed capacity [MWt]	1,068.7	1,068.7	1,068.7	1,068.7	1,068.7	1,068.7	1,068.7	1,068.7	1,068.7	1,068.4	1,068.4	1,068.4	1,068.4	2.8%
Gross heat production [TJ]	614.6	437.2	443.3	371.0	239.8	202.0	175.3	183.7	306.2	407.2	500.2	581.8	4,462.2	3.0%
Heat supply by fuel [TJ]	403.4	333.8	330.3	272.7	154.3	123.2	103.0	110.4	159.8	203.8	288.0	354.0	2,836.8	3.5%
■ Biomass	51.7	53.4	42.8	43.1	37.4	30.3	11.4	2.7	3.4	46.1	53.6	53.9	429.8	5.7%
■ Biogas	5.8	5.0	5.0	4.3	2.7	1.8	1.8	1.6	2.4	3.3	4.4	5.0	43.2	7.2%
■ Hard coal	9.9	3.9	2.1	6.7	2.6	1.6	2.1	2.7	3.2	1.2	3.7	3.8	43.6	0.5%
■ Electrical energy	0.0	0.0	0.0	0.0	0.0	0.0	0.0	0.0	0.0	0.0	0.0	0.0	0.0	0.0%
■ Ambient energy (heat pump)	0.0	0.0	0.0	0.0	0.0	0.0	0.0	0.0	0.0	0.0	0.0	0.0	0.0	0.0%
■ Solar energy (solar panel)	0.0	0.0	0.0	0.0	0.0	0.0	0.0	0.0	0.0	0.0	0.0	0.0	0.0	0.4%
■ Brown coal	188.5	152.6	168.2	130.0	63.9	46.2	50.0	64.3	96.0	88.7	125.8	168.5	1,342.8	3.7%
■ Nuclear fuel	0.0	0.0	0.0	0.0	0.0	0.0	0.0	0.0	0.0	0.0	0.0	0.0	0.0	0.0%
■ Coke	0.0	0.0	0.0	0.0	0.0	0.0	0.0	0.0	0.0	0.0	0.0	0.0	0.0	0.0%
■ Waste heat	0.0	0.0	0.0	0.0	0.0	0.0	0.0	0.0	0.0	0.0	0.0	0.0	0.0	0.0%
■ Other liquid fuels	0.0	0.0	0.0	0.0	0.0	0.0	0.0	0.0	0.0	0.0	0.0	0.0	0.0	0.0%
■ Other solid fuels	0.0	0.0	0.0	0.0	0.0	0.0	0.0	0.0	0.0	0.0	0.0	0.0	0.0	0.0%
■ Other gases	0.0	0.0	0.0	0.0	0.0	0.0	0.0	0.0	0.0	0.0	0.0	0.0	0.0	0.0%
■ Other	0.0	0.0	0.0	0.0	0.0	0.0	0.0	0.0	0.0	0.0	0.0	0.0	0.0	0.0%
■ Fuel oils	2.7	3.4	4.6	3.0	0.2	0.1	0.4	0.1	0.1	0.1	0.0	0.0	14.5	2.5%
■ Natural gas	144.9	115.5	107.6	85.6	47.4	43.2	37.3	39.0	54.7	64.5	100.5	122.8	963.0	4.5%
Heat supply from Pardubický Region	179.0	138.7	137.2	105.5	33.4	22.0	21.4	20.7	49.8	74.7	125.1	166.3	1,073.9	
Heat consumption by economic sector*	504.0	407.8	400.5	311.2	140.8	104.5	86.7	93.9	161.8	227.4	359.1	435.1	3,232.8	4.3%
■ Industry	90.1	76.3	76.0	67.6	51.4	46.1	32.4	38.8	51.3	56.8	70.6	69.5	726.8	3.6%
■ Energy	1.0	0.7	0.8	0.6	0.3	0.2	0.2	0.2	0.3	0.4	0.7	0.8	6.2	0.4%
■ Transport	2.7	2.2	2.1	1.7	0.5	0.2	0.1	0.0	0.4	0.8	1.7	4.2	16.6	2.8%
■ Construction	1.2	1.0	0.9	0.8	0.2	0.2	0.0	0.0	0.2	0.5	0.9	1.0	6.8	3.3%
■ Farming and forestry	0.2	0.1	0.1	0.1	0.0	0.0	0.0	0.0	0.0	0.1	0.1	0.3	1.1	0.3%
■ Households	244.7	196.5	191.1	143.1	55.1	36.7	33.5	34.4	66.3	103.3	173.2	175.4	1,453.3	4.5%
■ Retail, services, schools, health care	157.0	124.8	123.3	92.1	30.7	18.3	18.2	17.7	40.3	61.8	107.1	177.1	968.4	5.7%
■ Other	7.2	6.1	6.3	5.2	2.6	2.9	2.3	2.8	3.0	3.7	4.8	6.7	53.6	2.7%

* The difference between supply and consumption includes losses of bought heat and a part of unidentified heat distribution.

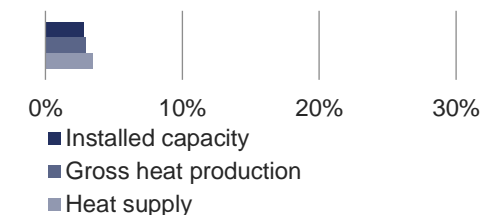
Heat supply by fuel [TJ]



Heat consumption by national economy sector [TJ]



Share in CR



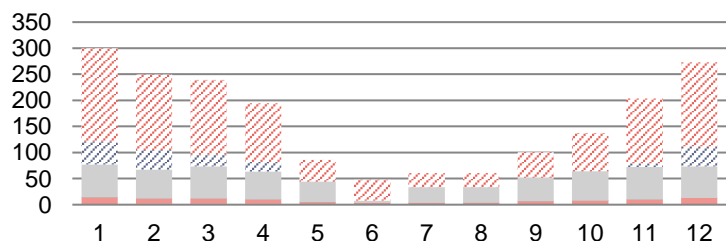
8.7 Heat production, supply and consumption: Liberecký Region



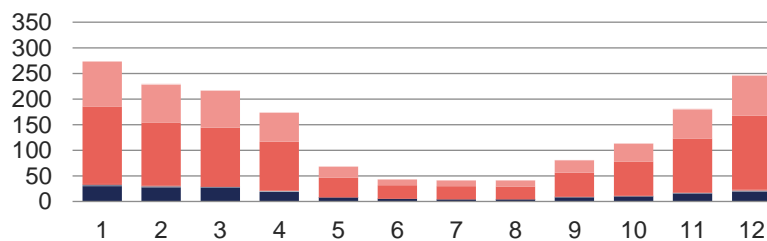
	First quarter			Second quarter			Third quarter			Fourth quarter			Total	Share in CR
	January	February	March	April	May	June	July	August	September	October	November	December		
Total installed capacity [MWt]	484.2	485.3	485.3	484.7	484.7	484.7	484.7	484.7	484.7	446.0	446.0	446.0	446.0	1.2%
Gross heat production [TJ]	335.2	280.3	271.9	225.8	128.3	75.7	107.6	105.8	136.3	169.0	233.0	307.9	2,376.8	1.6%
Heat supply by fuel [TJ]	300.2	249.5	239.1	194.2	85.6	47.7	60.7	60.4	100.4	137.6	203.8	273.3	1,952.4	2.4%
■ Biomass	0.1	0.7	0.7	0.6	0.0	0.0	0.0	0.0	0.0	0.1	0.1	0.1	2.4	0.0%
■ Biogas	1.0	0.9	1.0	1.0	0.8	0.7	0.6	0.6	0.6	0.8	0.8	1.1	9.9	1.6%
■ Hard coal	0.0	0.0	0.0	0.0	0.0	0.0	0.0	0.0	0.0	0.0	0.0	0.0	0.0	0.0%
■ Electrical energy	0.0	0.0	0.0	0.0	0.0	0.0	0.0	0.0	0.0	0.0	0.0	0.0	0.0	0.0%
■ Ambient energy (heat pump)	0.0	0.0	0.0	0.0	0.0	0.0	0.0	0.0	0.0	0.0	0.0	0.0	0.0	0.0%
■ Solar energy (solar panel)	0.0	0.0	0.0	0.0	0.0	0.0	0.0	0.0	0.0	0.0	0.0	0.0	0.0	0.0%
■ Brown coal	12.6	9.9	9.9	8.1	4.0	2.8	2.8	3.1	6.0	6.7	9.0	11.4	86.4	0.2%
■ Nuclear fuel	0.0	0.0	0.0	0.0	0.0	0.0	0.0	0.0	0.0	0.0	0.0	0.0	0.0	0.0%
■ Coke	0.0	0.0	0.0	0.0	0.0	0.0	0.0	0.0	0.0	0.0	0.0	0.0	0.0	0.0%
■ Waste heat	0.3	0.3	0.4	0.3	0.0	0.0	0.1	0.2	0.2	0.2	0.3	0.4	2.7	0.3%
■ Other liquid fuels	0.0	0.0	0.0	0.0	0.0	0.0	0.0	0.0	0.0	0.0	0.0	0.0	0.0	0.0%
■ Other solid fuels	63.2	55.2	61.3	54.0	39.5	4.1	30.3	29.7	45.4	56.6	62.1	60.8	562.2	21.9%
■ Other gases	0.0	0.0	0.0	0.0	0.0	0.0	0.0	0.0	0.0	0.0	0.0	0.0	0.0	0.0%
■ Other	0.0	0.0	0.0	0.0	0.0	0.0	0.0	0.0	0.0	0.0	0.0	0.0	0.0	0.0%
■ Fuel oils	44.4	37.4	23.0	17.9	0.5	0.0	0.0	0.0	0.0	0.0	6.9	36.9	167.1	29.1%
■ Natural gas	178.5	144.9	142.9	112.3	40.7	40.0	26.9	26.8	48.2	73.2	124.6	162.6	1,121.7	5.2%
Heat consumption by economic sector*	274.4	229.8	217.6	174.0	68.8	43.2	41.3	41.4	80.9	113.6	181.1	247.2	1,713.3	2.3%
■ Industry	30.1	27.6	26.6	18.6	7.8	4.7	4.1	4.0	8.0	9.6	15.4	19.5	175.9	0.9%
■ Energy	1.5	1.3	1.0	0.8	0.0	0.0	0.0	0.0	0.6	0.3	0.5	0.7	6.7	0.4%
■ Transport	1.4	1.1	0.9	0.7	0.1	0.0	0.0	0.0	0.1	0.4	0.7	1.2	6.6	1.1%
■ Construction	0.2	0.1	0.1	0.2	0.0	0.0	0.0	0.0	0.0	0.0	0.2	0.3	1.2	0.6%
■ Farming and forestry	1.0	0.9	1.0	1.0	0.8	0.7	0.6	0.6	0.6	0.8	0.8	1.1	9.9	2.6%
■ Households	151.2	123.0	114.5	95.4	37.8	26.6	25.2	24.9	46.9	67.0	105.6	144.9	962.9	3.0%
■ Retail, services, schools, health care	86.9	74.1	71.5	56.1	21.7	11.0	11.3	11.8	24.3	34.8	56.6	77.8	537.9	3.1%
■ Other	2.2	1.8	1.8	1.4	0.5	0.1	0.1	0.1	0.4	0.8	1.2	1.7	12.2	0.6%

* The difference between supply and consumption includes losses of bought heat and a part of unidentified heat distribution.

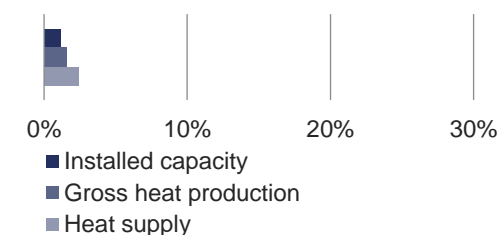
Heat supply by fuel [TJ]



Heat consumption by national economy sector [TJ]



Share in CR



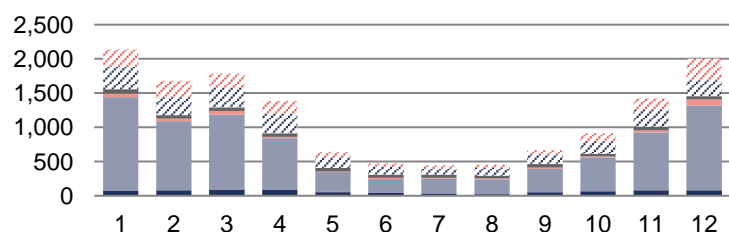
8.8 Heat production, supply and consumption: Moravskoslezský Region



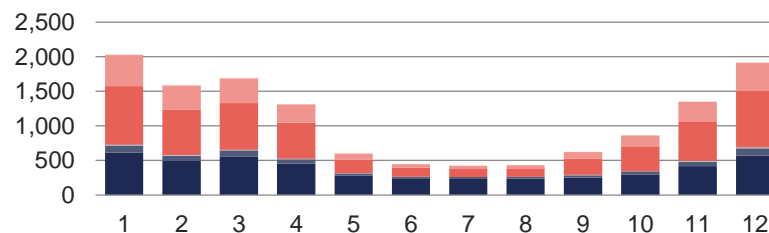
	First quarter			Second quarter			Third quarter			Fourth quarter			Total	Share in CR
	January	February	March	April	May	June	July	August	September	October	November	December		
Total installed capacity [MWt]	6,109.3	6,125.9	6,125.9	6,109.1	6,110.1	6,109.2	6,109.1	6,109.1	6,108.6	6,101.8	6,127.4	6,121.1	6,121.1	16.1%
Gross heat production [TJ]	3,743.7	2,997.4	3,202.8	2,757.0	1,983.7	1,727.5	1,666.5	1,585.1	1,854.9	2,006.0	2,799.3	3,382.2	29,706.2	19.7%
Heat supply by fuel [TJ]	2,139.2	1,677.8	1,784.5	1,386.8	636.7	473.3	445.2	456.0	664.4	911.9	1,421.8	2,002.1	13,999.6	17.1%
■ Biomass	74.1	79.1	89.5	84.1	54.2	42.4	32.7	24.7	50.7	66.6	81.5	79.4	759.0	10.0%
■ Biogas	0.1	0.1	0.1	0.2	0.1	0.0	0.1	0.0	0.1	0.1	0.1	0.1	1.1	0.2%
■ Hard coal	1,364.4	1,009.0	1,097.4	757.1	290.4	201.6	216.1	213.8	342.6	496.0	843.2	1,239.2	8,070.9	97.3%
■ Electrical energy	0.2	0.2	0.1	0.1	0.0	0.0	0.0	0.0	0.0	0.0	0.0	0.0	0.7	1.2%
■ Ambient energy (heat pump)	0.0	0.0	0.0	0.0	0.0	0.0	0.0	0.0	0.0	0.0	0.0	0.0	0.0	0.0%
■ Solar energy (solar panel)	0.0	0.0	0.0	0.0	0.0	0.0	0.0	0.0	0.0	0.0	0.0	0.0	0.0	0.0%
■ Brown coal	53.9	39.4	50.3	17.8	10.1	16.2	11.5	13.6	18.5	14.6	27.9	88.0	361.8	1.0%
■ Nuclear fuel	0.0	0.0	0.0	0.0	0.0	0.0	0.0	0.0	0.0	0.0	0.0	0.0	0.0	0.0%
■ Coke	0.0	0.0	0.0	0.0	0.0	0.0	0.0	0.0	0.0	0.0	0.0	0.0	0.0	0.0%
■ Waste heat	63.0	49.6	53.4	51.6	52.6	46.8	47.5	42.0	50.8	37.9	55.5	47.7	598.5	72.8%
■ Other liquid fuels	0.0	0.0	0.0	0.0	0.0	0.0	0.0	0.0	0.0	0.0	0.0	0.0	0.0	0.0%
■ Other solid fuels	0.1	0.3	5.6	4.4	0.6	1.2	1.0	1.3	5.1	0.0	0.2	4.4	24.0	0.9%
■ Other gases	329.8	264.4	279.9	283.8	151.6	111.6	90.0	111.3	134.5	180.2	245.8	232.2	2,415.1	73.0%
■ Other	0.0	0.0	0.0	0.0	0.0	0.0	0.0	0.0	0.0	0.0	0.0	0.0	0.0	0.0%
■ Fuel oils	0.6	0.5	0.5	0.2	0.1	0.0	0.1	0.1	0.2	0.2	0.3	1.1	4.0	0.7%
■ Natural gas	253.0	235.1	207.6	187.6	76.9	53.4	46.2	49.2	61.9	116.2	167.2	310.2	1,764.5	8.2%
Heat consumption by economic sector*	2,036.3	1,593.9	1,695.9	1,318.2	600.1	449.1	423.7	433.3	624.4	866.8	1,353.5	1,920.0	13,315.2	17.8%
■ Industry	612.8	491.1	555.0	457.3	278.2	233.0	232.7	235.8	251.2	296.1	418.3	573.0	4,634.4	22.7%
■ Energy	97.4	74.9	88.5	59.1	34.9	29.5	28.0	29.8	34.6	45.2	61.5	99.0	682.4	39.2%
■ Transport	9.4	7.2	7.1	4.6	1.1	0.4	0.4	0.4	0.9	2.2	5.2	8.6	47.6	8.0%
■ Construction	11.6	8.6	8.4	8.0	3.7	2.3	0.7	0.5	2.3	3.3	7.1	10.5	67.2	32.5%
■ Farming and forestry	0.0	0.0	0.0	0.0	0.0	0.0	0.0	0.0	4.0	3.9	3.7	3.2	14.9	3.8%
■ Households	844.0	655.1	670.2	519.3	191.8	128.2	113.4	118.3	231.2	354.5	568.9	810.0	5,204.9	16.1%
■ Retail, services, schools, health care	452.1	350.0	359.8	264.6	88.4	54.3	47.2	47.0	98.0	158.2	283.1	407.5	2,610.2	15.3%
■ Other	9.0	7.0	7.0	5.2	1.9	1.3	1.3	1.4	2.2	3.3	5.8	8.3	53.5	2.7%

* The difference between supply and consumption includes losses of bought heat and a part of unidentified heat distribution.

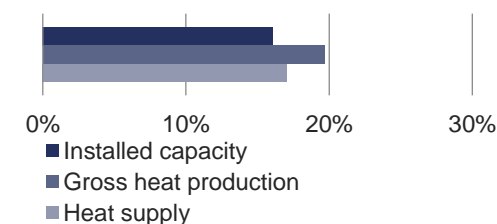
Heat supply by fuel [TJ]



Heat consumption by national economy sector [TJ]



Share in CR



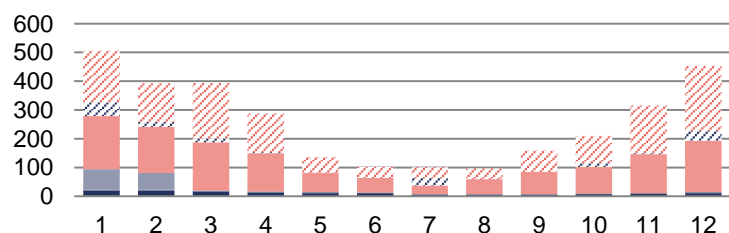
8.9 Heat production, supply and consumption: Olomoucký Region



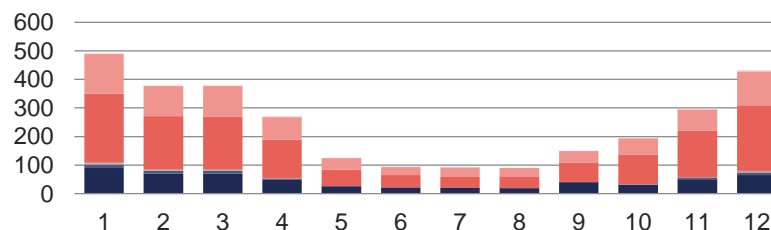
	First quarter			Second quarter			Third quarter			Fourth quarter			Total	Share in CR
	January	February	March	April	May	June	July	August	September	October	November	December		
Total installed capacity [MWt]	1,262.9	1,281.5	1,281.5	1,353.2	1,353.2	1,353.2	1,354.2	1,354.2	1,352.1	1,350.8	1,350.8	1,350.8	1,350.8	3.5%
Gross heat production [TJ]	895.4	655.5	669.4	541.6	369.4	317.5	312.8	288.7	403.7	563.4	666.7	807.1	6,491.1	4.3%
Heat supply by fuel [TJ]	505.6	392.4	393.0	287.6	136.2	102.4	101.0	96.0	159.1	209.6	315.8	453.8	3,152.5	3.8%
■ Biomass	19.2	19.9	16.2	12.7	11.1	10.5	5.4	5.4	5.6	7.1	8.0	10.2	131.2	1.7%
■ Biogas	4.1	3.4	3.8	3.4	2.6	2.4	2.3	2.3	2.0	2.8	3.1	3.9	36.3	6.0%
■ Hard coal	71.1	57.4	0.0	0.0	0.0	0.0	0.0	0.0	0.0	0.0	0.0	0.0	128.5	1.5%
■ Electrical energy	0.0	0.0	0.0	0.0	0.0	0.0	0.0	0.0	0.0	0.0	0.0	0.0	0.0	0.0%
■ Ambient energy (heat pump)	0.0	0.0	0.0	0.0	0.0	0.0	0.0	0.0	0.0	0.0	0.0	0.0	0.0	0.0%
■ Solar energy (solar panel)	0.0	0.0	0.0	0.0	0.0	0.0	0.0	0.0	0.0	0.0	0.0	0.0	0.0	0.0%
■ Brown coal	184.4	160.2	168.0	133.7	67.8	51.1	29.8	52.2	77.2	92.5	135.1	179.3	1,331.5	3.7%
■ Nuclear fuel	0.0	0.0	0.0	0.0	0.0	0.0	0.0	0.0	0.0	0.0	0.0	0.0	0.0	0.0%
■ Coke	0.0	0.0	0.0	0.0	0.0	0.0	0.0	0.0	0.0	0.0	0.0	0.0	0.0	0.0%
■ Waste heat	0.0	0.0	0.0	0.0	0.0	0.0	0.0	0.0	0.0	0.0	0.0	0.0	0.0	0.0%
■ Other liquid fuels	0.0	0.0	0.0	0.0	0.0	0.0	0.0	0.0	0.0	0.0	0.0	0.0	0.0	0.0%
■ Other solid fuels	0.0	0.0	0.0	0.0	0.0	0.0	0.0	0.0	0.0	0.0	0.0	0.0	0.0	0.0%
■ Other gases	0.0	0.0	0.0	0.0	0.0	0.0	0.0	0.0	0.0	0.0	0.0	0.0	0.0	0.0%
■ Other	0.0	0.0	0.0	0.0	0.0	0.0	0.0	0.0	0.0	0.0	0.0	0.0	0.0	0.0%
■ Fuel oils	48.1	16.5	13.2	3.4	0.4	0.1	27.0	0.1	0.8	12.4	3.3	33.0	158.3	27.6%
■ Natural gas	178.7	134.9	191.9	134.3	54.3	38.3	36.5	36.0	73.4	94.8	166.2	227.4	1,366.6	6.3%
Heat consumption by economic sector*	491.5	378.7	378.8	270.1	125.0	93.8	91.9	90.2	150.2	194.9	297.0	431.1	2,993.3	4.0%
■ Industry	89.4	70.5	71.2	48.1	26.0	21.3	20.4	19.5	40.0	31.9	49.9	64.5	552.8	2.7%
■ Energy	12.8	9.1	9.4	3.6	0.4	0.4	0.3	0.4	0.4	1.0	5.2	9.9	52.8	3.0%
■ Transport	0.2	0.2	0.2	0.1	0.0	0.0	0.0	0.0	0.0	0.0	0.1	0.2	1.0	0.2%
■ Construction	5.3	3.8	3.6	2.0	0.2	0.0	0.0	0.0	0.2	0.5	2.0	4.2	21.9	10.6%
■ Farming and forestry	1.2	1.0	1.2	1.1	0.7	0.5	0.3	0.3	0.5	0.6	0.9	0.9	9.2	2.4%
■ Households	241.4	186.7	184.6	135.1	57.1	42.4	39.1	40.7	66.3	102.0	162.8	229.8	1,488.0	4.6%
■ Retail, services, schools, health care	138.7	105.3	106.5	78.6	40.1	29.0	31.4	29.0	42.0	58.0	74.4	119.3	852.3	5.0%
■ Other	2.5	2.0	2.1	1.6	0.6	0.2	0.3	0.2	0.9	0.9	1.8	2.4	15.4	0.8%

* The difference between supply and consumption includes losses of bought heat and a part of unidentified heat distribution.

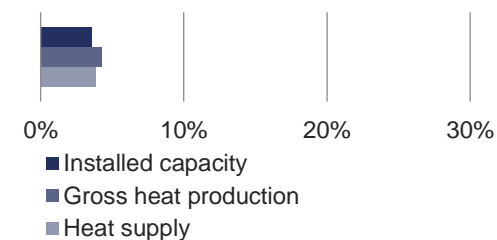
Heat supply by fuel [TJ]



Heat consumption by national economy sector [TJ]



Share in CR



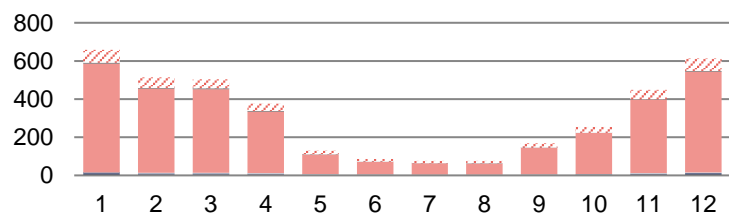
8.10 Heat production, supply and consumption: Pardubický Region



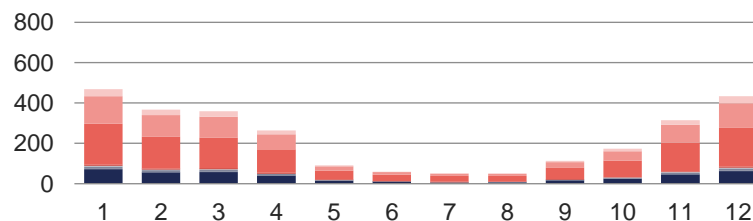
	First quarter			Second quarter			Third quarter			Fourth quarter			Total	Share in CR
	January	February	March	April	May	June	July	August	September	October	November	December		
Total installed capacity [MWt]	3,723.8	3,724.2	3,724.2	3,724.2	3,724.2	3,724.2	3,516.8	3,516.8	3,516.8	3,516.8	3,516.8	3,516.9	3,516.9	9.2%
Gross heat production [TJ]	936.4	756.4	768.6	612.0	310.3	248.4	225.2	207.4	347.8	455.1	674.6	873.6	6,415.9	4.2%
Heat supply by fuel [TJ]	658.3	513.7	503.8	377.0	129.5	85.6	76.6	75.4	167.8	254.4	448.4	612.3	3,902.7	4.8%
■ Biomass	6.4	5.2	4.7	3.8	1.4	0.7	0.3	0.2	1.4	2.6	5.0	6.8	38.7	0.5%
■ Biogas	5.9	5.5	5.8	5.2	2.9	2.9	2.4	2.0	2.4	3.1	4.0	5.3	47.3	7.9%
■ Hard coal	0.7	0.0	0.0	0.0	0.0	0.0	0.0	0.0	0.0	0.0	0.0	0.0	0.7	0.0%
■ Electrical energy	3.0	3.6	4.1	3.9	2.2	1.8	1.8	1.4	1.8	1.8	3.7	4.0	33.1	59.2%
■ Ambient energy (heat pump)	0.0	0.0	0.0	0.0	0.0	0.0	0.0	0.0	0.0	0.0	0.0	0.0	0.0	0.0%
■ Solar energy (solar panel)	0.0	0.0	0.0	0.0	0.0	0.0	0.0	0.0	0.0	0.0	0.0	0.0	0.0	0.0%
■ Brown coal	570.8	440.2	437.7	322.1	103.6	66.0	59.6	59.7	140.4	215.4	386.0	528.1	3,329.5	9.2%
■ Nuclear fuel	0.0	0.0	0.0	0.0	0.0	0.0	0.0	0.0	0.0	0.0	0.0	0.0	0.0	0.0%
■ Coke	0.0	0.0	0.0	0.0	0.0	0.0	0.0	0.0	0.0	0.0	0.0	0.0	0.0	0.0%
■ Waste heat	4.1	4.4	4.7	3.3	1.3	1.2	0.8	0.5	0.8	1.1	2.0	2.5	26.6	3.2%
■ Other liquid fuels	0.0	0.0	0.0	0.0	0.0	0.0	0.0	0.0	0.0	0.0	0.0	0.0	0.0	0.0%
■ Other solid fuels	0.0	0.0	0.0	0.0	0.0	0.0	0.0	0.0	0.0	0.0	0.0	0.0	0.0	0.0%
■ Other gases	0.0	0.0	0.0	0.0	0.0	0.0	0.0	0.0	0.0	0.0	0.0	0.0	0.0	0.0%
■ Other	0.0	0.0	0.0	0.0	0.0	0.0	0.0	0.0	0.0	0.0	0.0	0.0	0.0	0.0%
■ Fuel oils	0.0	0.0	0.0	0.0	0.0	0.0	0.0	0.0	0.0	0.0	0.0	0.0	0.3	0.1%
■ Natural gas	67.4	54.8	46.7	38.7	18.1	12.9	11.7	11.6	20.9	30.4	47.7	65.5	426.4	2.0%
Heat supply to Královehradecký Region	-179.0	-138.7	-137.2	-105.5	-33.4	-22.0	-21.4	-20.7	-49.8	-74.7	-125.1	-166.3	-1,073.9	
Heat consumption by economic sector*	469.0	367.1	360.0	263.8	90.9	60.0	51.3	50.8	113.5	173.0	315.0	433.7	2,748.1	3.7%
■ Industry	71.3	55.8	57.1	39.5	15.3	9.4	6.1	6.7	16.3	24.8	45.7	62.6	410.6	2.0%
■ Energy	2.3	2.5	3.6	2.7	1.3	1.1	0.9	0.7	1.3	1.3	2.4	3.0	23.1	1.3%
■ Transport	10.6	8.4	7.8	5.5	1.1	0.4	0.4	0.4	1.8	3.3	6.9	10.3	56.9	9.5%
■ Construction	5.0	3.6	3.1	2.1	0.5	0.3	0.2	0.2	0.7	1.0	2.1	3.6	22.2	10.8%
■ Farming and forestry	5.5	5.2	5.5	5.0	2.5	2.6	2.0	1.7	2.0	2.6	3.4	4.5	42.5	10.9%
■ Households	202.5	157.4	152.0	115.1	44.2	30.5	28.9	28.5	57.0	82.6	143.1	193.4	1,235.2	3.8%
■ Retail, services, schools, health care	137.2	106.7	103.3	74.8	21.7	13.1	10.8	10.4	27.9	45.8	88.5	122.0	762.1	4.5%
■ Other	34.6	27.5	27.6	19.1	4.4	2.6	2.1	2.2	6.5	11.6	23.0	34.3	195.4	9.7%

* The difference between supply and consumption includes losses of bought heat, a part of unidentified heat distribution, and the heat portion supplied to the Hradec Králové SZT.

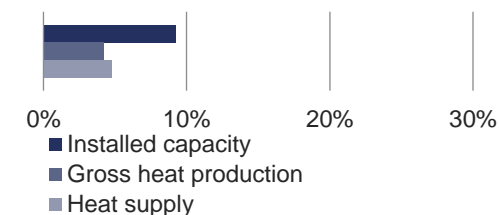
Heat supply by fuel [TJ]



Heat consumption by national sector [TJ]



Share in CR



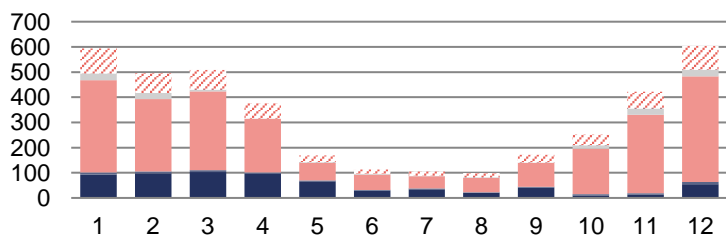
8.11 Heat production, supply and consumption: Plzeňský Region



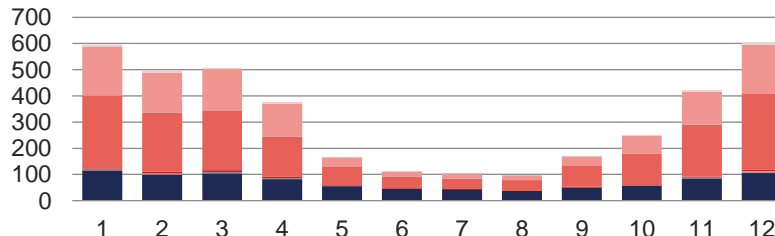
	First quarter			Second quarter			Third quarter			Fourth quarter			Total	Share in CR
	January	February	March	April	May	June	July	August	September	October	November	December		
Total installed capacity [MWt]	1,064.3	1,064.3	1,064.3	1,064.3	1,064.3	1,064.3	1,064.3	1,064.3	1,064.3	1,064.3	1,064.3	1,064.3	1,064.3	2.8%
Gross heat production [TJ]	795.1	652.2	671.1	531.4	281.3	230.1	222.3	196.3	295.9	397.0	583.4	756.5	5,612.5	3.7%
Heat supply by fuel [TJ]	593.0	495.9	507.8	376.4	168.7	113.4	105.1	98.5	171.9	251.7	421.6	604.2	3,908.3	4.8%
■ Biomass	92.9	97.6	102.3	94.9	65.5	28.8	34.4	20.2	40.2	10.1	12.4	54.4	653.7	8.7%
■ Biogas	8.6	7.1	8.1	6.7	4.6	3.0	3.1	2.3	3.9	5.0	6.9	8.4	67.7	11.2%
■ Hard coal	0.0	0.0	0.0	0.0	0.0	0.0	0.0	0.0	0.0	0.0	0.0	0.0	0.0	0.0%
■ Electrical energy	0.2	0.2	0.2	0.2	0.2	0.3	0.3	0.2	0.2	0.2	0.2	0.2	2.7	4.8%
■ Ambient energy (heat pump)	0.0	0.0	0.0	0.0	0.0	0.0	0.0	0.0	0.0	0.0	0.0	0.0	0.0	0.0%
■ Solar energy (solar panel)	0.0	0.0	0.0	0.0	0.0	0.0	0.0	0.0	0.0	0.0	0.0	0.0	0.0	0.0%
■ Brown coal	365.5	287.2	312.6	213.1	69.8	61.0	48.2	56.9	95.0	180.9	311.5	419.6	2,421.4	6.7%
■ Nuclear fuel	0.0	0.0	0.0	0.0	0.0	0.0	0.0	0.0	0.0	0.0	0.0	0.0	0.0	0.0%
■ Coke	0.0	0.0	0.0	0.0	0.0	0.0	0.0	0.0	0.0	0.0	0.0	0.0	0.0	0.0%
■ Waste heat	0.0	0.0	0.0	0.0	0.0	0.0	0.0	0.0	0.0	0.0	0.0	0.0	0.0	0.0%
■ Other liquid fuels	0.0	0.0	0.0	0.0	0.0	0.0	0.0	0.0	0.0	0.0	0.0	0.0	0.0	0.0%
■ Other solid fuels	27.0	24.2	7.4	0.7	1.8	2.1	2.1	2.2	0.9	13.1	25.0	25.8	132.4	5.1%
■ Other gases	0.0	0.1	0.0	0.0	0.1	0.0	0.0	0.0	0.1	0.1	0.0	0.0	0.4	0.0%
■ Other	0.0	0.0	0.0	0.0	0.0	0.0	0.0	0.0	0.0	0.0	0.0	0.0	0.0	0.0%
■ Fuel oils	0.0	0.5	0.2	0.0	0.0	0.0	0.0	0.0	0.0	0.0	0.0	1.6	2.3	0.4%
■ Natural gas	98.6	79.0	77.0	60.9	26.8	18.2	17.1	16.7	31.5	42.3	65.5	94.2	627.7	2.9%
Heat consumption by economic sector*	595.7	496.2	507.9	376.3	168.2	113.1	105.2	97.8	171.6	251.3	421.7	602.8	3,907.9	5.2%
■ Industry	115.6	98.2	103.8	82.2	55.8	46.7	44.2	36.9	50.2	58.0	84.3	106.0	881.9	4.3%
■ Energy	0.2	0.2	0.2	0.0	0.3	0.3	0.3	0.3	0.2	0.3	0.2	0.2	2.8	0.2%
■ Transport	5.6	5.0	4.9	3.8	0.3	0.1	0.1	0.1	0.1	1.7	3.6	5.3	30.6	5.1%
■ Construction	0.7	0.5	0.4	0.3	0.1	0.0	0.0	0.0	0.1	0.1	0.3	0.6	3.2	1.5%
■ Farming and forestry	5.8	6.0	6.9	4.5	2.9	1.1	1.1	0.9	1.7	2.2	3.8	5.2	42.0	10.8%
■ Households	273.7	225.7	226.3	152.7	69.9	42.3	38.7	40.2	80.2	117.9	197.3	290.3	1,755.3	5.4%
■ Retail, services, schools, health care	186.1	153.8	158.8	127.7	36.6	21.4	19.7	18.4	36.4	67.2	126.3	187.3	1,139.6	6.7%
■ Other	8.2	6.7	6.5	5.3	2.4	1.2	1.1	1.0	2.6	3.9	5.8	7.8	52.6	2.6%

* The difference between supply and consumption includes losses of bought heat and a part of unidentified heat distribution.

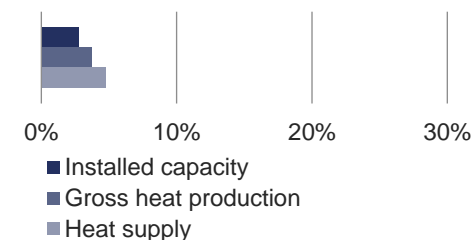
Heat supply by fuel [TJ]



Heat consumption by national economy sector [TJ]



Share in CR



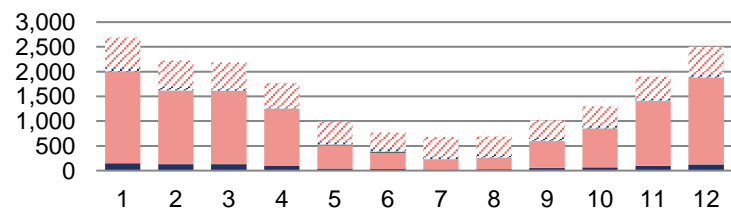
8.12 Heat production, supply and consumption: Středočeský Region



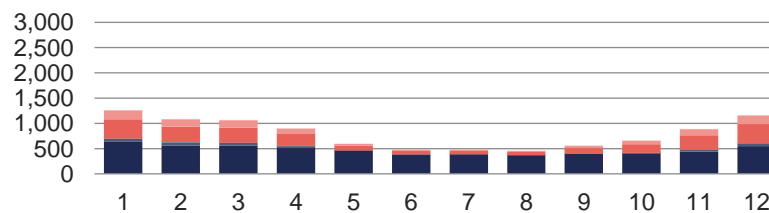
	First quarter			Second quarter			Third quarter			Fourth quarter			Total	Share in CR
	January	February	March	April	May	June	July	August	September	October	November	December		
Total installed capacity [MWt]	4,357.8	4,358.8	4,358.8	4,374.9	4,375.2	4,375.2	4,383.6	4,384.1	4,386.2	4,402.2	4,399.1	4,399.1	4,399.1	11.5%
Gross heat production [TJ]	3,461.5	2,762.6	2,595.2	2,114.7	1,489.0	1,279.1	1,213.9	1,204.2	1,603.9	2,024.8	2,692.0	3,299.9	25,740.8	17.0%
Heat supply by fuel [TJ]	2,693.5	2,225.1	2,186.2	1,768.9	989.6	770.8	675.5	689.6	1,012.6	1,296.4	1,898.3	2,503.2	18,709.8	22.8%
■ Biomass	146.0	128.3	132.0	97.8	41.2	29.7	20.9	28.1	52.8	63.3	95.7	121.2	956.9	12.7%
■ Biogas	4.7	4.1	4.3	4.1	3.5	2.3	2.5	3.0	2.9	4.2	6.2	5.2	47.0	7.8%
■ Hard coal	0.0	0.0	0.0	0.0	0.0	0.0	0.0	0.0	0.0	0.0	0.0	0.0	0.0	0.0%
■ Electrical energy	0.0	0.0	0.0	0.0	0.0	0.0	0.0	0.0	0.0	5.5	4.9	1.3	11.8	21.0%
■ Ambient energy (heat pump)	0.0	0.0	0.0	0.0	0.0	0.0	0.0	0.0	0.0	0.0	0.0	0.0	0.0	0.0%
■ Solar energy (solar panel)	0.0	0.0	0.0	0.0	0.0	0.0	0.0	0.0	0.0	0.0	0.0	0.0	0.0	0.0%
■ Brown coal	1,837.7	1,473.2	1,465.9	1,142.1	462.7	324.2	194.6	219.0	533.0	771.2	1,291.7	1,748.6	11,463.8	31.6%
■ Nuclear fuel	0.0	0.0	0.0	0.0	0.0	0.0	0.0	0.0	0.0	0.0	0.0	0.0	0.0	0.0%
■ Coke	0.0	0.0	0.0	0.0	0.0	0.0	0.0	0.0	0.0	0.0	0.0	0.0	0.0	0.0%
■ Waste heat	6.6	7.3	4.9	4.0	14.2	25.9	8.1	7.2	5.4	4.1	2.6	0.3	90.6	11.0%
■ Other liquid fuels	2.1	3.5	0.8	2.2	1.5	1.2	1.0	0.9	1.1	2.1	1.1	2.3	19.9	35.9%
■ Other solid fuels	6.3	6.2	7.5	6.0	6.2	7.0	7.8	6.4	3.8	5.1	7.3	5.7	75.2	2.9%
■ Other gases	87.5	74.6	41.5	19.9	58.9	64.2	49.6	65.5	66.8	59.1	45.0	59.5	692.1	20.9%
■ Other	0.0	0.0	0.0	0.0	0.0	0.0	0.0	0.0	0.0	0.0	0.0	0.0	0.0	0.0%
■ Fuel oils	5.8	4.2	2.1	2.5	0.8	1.1	2.8	0.4	1.2	2.2	3.5	4.4	31.0	5.4%
■ Natural gas	596.7	523.6	527.3	490.4	400.6	315.2	388.2	359.1	345.7	379.7	440.3	554.7	5,321.4	24.6%
Heat supply to Prague	-1,374.9	-1,100.8	-1,088.5	-850.7	-333.8	-240.8	-149.7	-165.3	-398.8	-565.2	-950.7	-1,286.5	-8,505.8	
Heat consumption by economic sector*	1,261.5	1,082.8	1,065.3	901.7	595.0	479.0	475.8	454.3	555.5	656.8	885.8	1,157.6	9,571.1	12.8%
■ Industry	644.6	562.2	561.3	513.3	463.1	386.0	390.9	367.9	395.0	409.3	443.3	548.4	5,685.4	27.8%
■ Energy	52.1	63.7	52.3	36.6	0.2	0.1	0.1	0.1	0.3	0.8	37.4	59.8	303.4	17.4%
■ Transport	4.1	3.5	3.3	2.3	0.6	0.4	0.3	0.3	0.8	1.4	2.4	3.4	22.6	3.8%
■ Construction	0.2	0.2	0.2	0.1	0.0	0.0	0.0	0.0	0.0	0.1	0.1	0.3	1.2	0.6%
■ Farming and forestry	1.8	1.5	1.6	1.5	1.5	1.4	1.2	1.4	1.3	1.7	3.7	2.4	21.1	5.4%
■ Households	380.5	305.6	300.2	236.5	93.0	67.6	62.2	63.2	113.8	170.4	274.8	370.4	2,438.3	7.6%
■ Retail, services, schools, health care	176.0	144.1	144.9	109.3	35.9	23.4	20.8	21.1	43.7	72.1	122.3	170.0	1,083.6	6.3%
■ Other	2.3	1.9	1.6	2.1	0.7	0.2	0.2	0.3	0.7	1.0	1.7	2.9	15.5	0.8%

* The difference between supply and consumption includes losses of bought heat and a part of unidentified heat distribution.

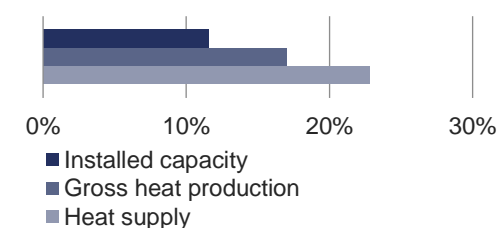
Heat supply by fuel [TJ]



Heat consumption by national economy sector [TJ]



Share in CR



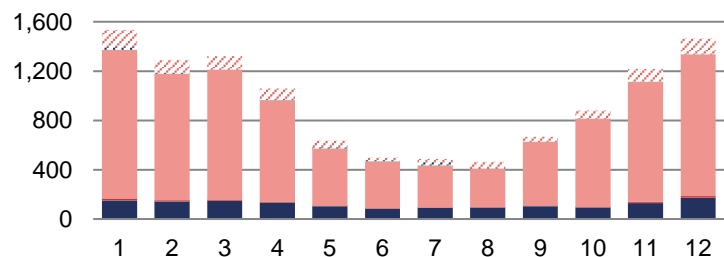
8.13 Heat production, supply and consumption: Ústecký Region



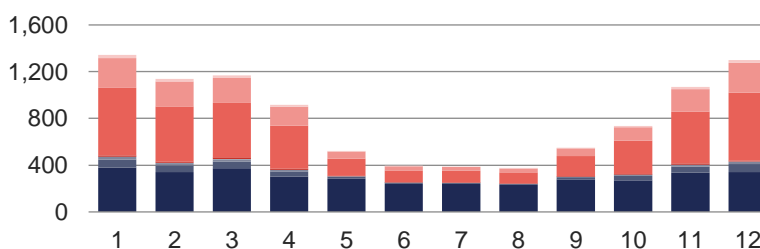
	First quarter			Second quarter			Third quarter			Fourth quarter			Total	Share in CR
	January	February	March	April	May	June	July	August	September	October	November	December		
Total installed capacity [MWt]	9,932.6	9,932.6	9,932.6	9,932.6	9,932.6	9,932.6	9,932.6	9,932.6	9,932.6	9,933.6	9,933.6	9,933.5	9,933.5	26.1%
Gross heat production [TJ]	3,411.7	2,947.9	3,081.4	2,684.9	2,177.6	1,860.3	1,958.0	1,953.2	2,144.1	2,103.2	2,858.3	3,297.8	30,478.4	20.2%
Heat supply by fuel [TJ]	1,534.0	1,288.9	1,321.4	1,059.9	634.7	497.6	488.1	464.2	666.5	879.4	1,216.5	1,464.4	11,515.5	14.0%
■ Biomass	149.5	141.5	146.9	131.0	104.0	83.1	89.6	92.9	103.9	93.1	128.5	173.3	1,437.5	19.0%
■ Biogas	2.0	1.8	1.9	1.6	1.8	1.7	1.6	0.9	1.2	1.9	2.0	2.5	20.9	3.5%
■ Hard coal	0.8	0.7	0.7	0.8	0.3	0.1	0.2	0.2	0.3	0.5	0.5	0.4	5.4	0.1%
■ Electrical energy	0.0	0.0	0.0	0.0	0.0	0.0	0.0	0.0	0.0	0.0	0.0	0.0	0.0	0.0%
■ Ambient energy (heat pump)	9.9	7.8	7.9	6.2	2.5	1.7	1.6	1.5	2.7	4.7	7.3	9.7	63.5	83.4%
■ Solar energy (solar panel)	0.0	0.0	0.0	0.0	0.0	0.0	0.0	0.0	0.0	0.0	0.0	0.0	0.1	10.9%
■ Brown coal	1,206.9	1,025.1	1,052.0	822.9	461.5	380.1	339.7	312.3	518.1	711.2	972.7	1,148.9	8,951.4	24.7%
■ Nuclear fuel	0.0	0.0	0.0	0.0	0.0	0.0	0.0	0.0	0.0	0.0	0.0	0.0	0.0	0.0%
■ Coke	0.0	0.0	0.0	0.0	0.0	0.0	0.0	0.0	0.0	0.0	0.0	0.0	0.0	0.0%
■ Waste heat	0.9	0.7	0.7	0.3	0.0	0.0	0.0	0.0	0.1	0.1	0.3	0.8	3.9	0.5%
■ Other liquid fuels	0.0	0.0	0.0	0.0	0.0	0.0	0.0	0.0	0.0	0.0	0.0	0.0	0.0	0.0%
■ Other solid fuels	1.7	0.5	1.8	2.2	2.3	1.6	2.3	1.4	0.9	1.8	2.1	0.9	19.7	0.8%
■ Other gases	27.9	6.0	0.0	6.0	13.3	7.3	27.3	3.6	0.0	0.0	0.0	0.0	91.4	2.8%
■ Other	0.0	0.0	0.0	0.0	0.0	0.0	0.0	0.0	0.0	0.0	0.0	0.0	0.0	0.0%
■ Fuel oils	3.3	4.8	2.2	2.5	0.4	1.1	0.7	1.7	0.7	4.6	1.7	2.7	26.4	4.6%
■ Natural gas	131.2	99.9	107.3	86.3	48.7	20.7	25.1	49.6	38.5	61.4	101.4	125.2	895.3	4.1%
Heat consumption by economic sector*	1,344.2	1,137.7	1,167.9	915.6	521.3	395.8	387.8	375.5	550.3	736.6	1,070.5	1,300.7	9,903.8	13.2%
■ Industry	380.1	342.4	374.0	304.1	282.6	239.7	239.2	231.0	279.5	269.8	335.1	342.4	3,620.0	17.7%
■ Energy	67.9	56.5	58.5	42.1	18.1	10.1	9.5	9.1	17.4	37.6	52.5	66.1	445.3	25.6%
■ Transport	24.1	18.8	19.2	13.9	4.0	1.5	1.3	1.3	3.2	11.1	16.0	21.1	135.5	22.6%
■ Construction	1.5	1.6	1.7	1.4	0.4	0.0	0.0	0.0	0.4	1.0	0.7	1.6	10.5	5.1%
■ Farming and forestry	11.1	11.4	14.4	9.9	2.9	1.7	1.7	1.3	4.1	6.4	11.3	9.5	85.9	22.1%
■ Households	577.5	472.5	465.3	366.1	149.1	102.3	99.2	95.9	173.7	284.9	443.8	580.1	3,810.4	11.8%
■ Retail, services, schools, health care	255.0	211.6	213.2	161.3	58.0	34.2	33.5	33.4	64.9	114.0	192.0	254.7	1,625.8	9.5%
■ Other	26.9	22.7	21.7	16.8	6.2	6.3	3.3	3.4	7.0	11.9	19.1	25.3	170.5	8.5%

* The difference between supply and consumption includes losses of bought heat and a part of unidentified heat distribution.

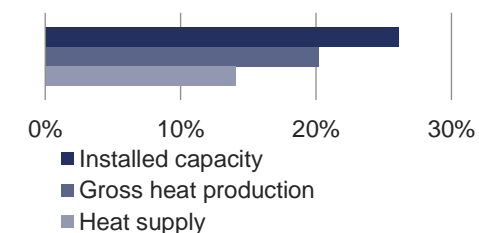
Heat supply by fuel [TJ]



Heat consumption by national economy sector [TJ]



Share in CR



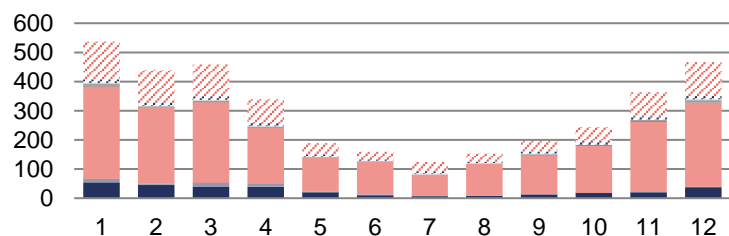
8.14 Heat production, supply and consumption: Zlínský Region



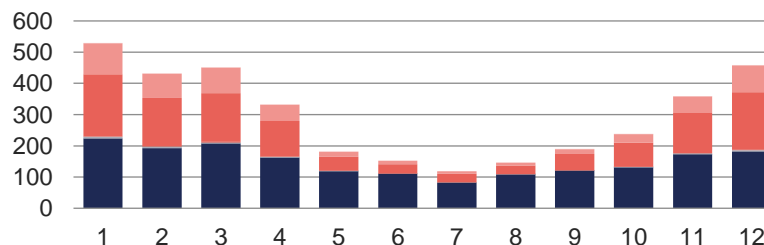
	First quarter			Second quarter			Third quarter			Fourth quarter			Total	Share in CR
	January	February	March	April	May	June	July	August	September	October	November	December		
Total installed capacity [MWt]	1,286.3	1,286.3	1,287.6	1,287.6	1,287.6	1,287.6	1,284.2	1,283.9	1,284.1	1,256.8	1,256.8	1,256.8	1,256.8	3.3%
Gross heat production [TJ]	970.7	796.9	862.4	648.4	460.4	422.7	313.2	364.3	447.1	488.6	664.9	796.2	7,235.8	4.8%
Heat supply by fuel [TJ]	537.4	437.8	458.5	339.0	189.0	159.3	123.7	152.4	195.9	244.3	364.0	466.4	3,667.7	4.5%
■ Biomass	53.8	45.2	39.5	38.1	19.8	10.6	7.3	7.9	13.0	17.8	20.2	38.0	311.2	4.1%
■ Biogas	1.2	1.0	1.0	1.3	0.8	0.4	0.3	0.5	0.6	1.0	1.0	1.1	10.2	1.7%
■ Hard coal	11.0	4.3	13.0	10.0	3.1	2.1	0.0	0.0	0.0	0.0	0.4	0.0	44.0	0.5%
■ Electrical energy	0.0	0.0	0.0	0.0	0.1	0.1	0.0	0.0	0.0	0.0	0.0	0.0	0.2	0.4%
■ Ambient energy (heat pump)	0.0	0.0	0.0	0.0	0.0	0.0	0.0	0.0	0.0	0.1	0.1	0.1	0.4	0.5%
■ Solar energy (solar panel)	0.0	0.0	0.0	0.0	0.0	0.0	0.0	0.0	0.0	0.0	0.0	0.0	0.0	0.0%
■ Brown coal	317.3	258.8	275.5	193.6	115.9	112.4	74.2	110.6	133.9	161.6	240.6	288.2	2,282.5	6.3%
■ Nuclear fuel	0.0	0.0	0.0	0.0	0.0	0.0	0.0	0.0	0.0	0.0	0.0	0.0	0.0	0.0%
■ Coke	0.0	0.0	0.0	0.0	0.0	0.0	0.0	0.0	0.0	0.0	0.0	0.0	0.0	0.0%
■ Waste heat	1.9	1.5	0.5	2.2	0.4	0.9	0.0	0.0	0.2	1.6	2.3	1.2	12.7	1.5%
■ Other liquid fuels	7.1	4.2	4.8	0.0	0.0	0.0	0.0	0.0	2.8	0.0	3.7	8.0	30.5	55.0%
■ Other solid fuels	2.6	1.9	2.5	2.3	2.6	2.5	2.5	2.1	2.3	0.9	1.3	2.9	26.5	1.0%
■ Other gases	11.3	11.3	12.0	10.8	6.1	5.2	8.1	3.7	6.7	12.8	10.4	11.1	109.5	3.3%
■ Other	0.0	0.0	0.0	0.0	0.0	0.0	0.0	0.0	0.0	0.0	0.0	0.0	0.0	0.0%
■ Fuel oils	0.0	0.1	0.1	0.1	0.2	0.0	0.1	0.0	0.2	0.1	0.0	0.0	0.9	0.2%
■ Natural gas	131.3	109.4	109.5	80.5	39.8	25.1	31.2	27.5	36.2	48.6	84.0	115.8	839.1	3.9%
Heat consumption by economic sector*	529.8	432.2	451.7	332.7	181.5	152.8	118.4	146.1	189.2	238.1	358.3	458.1	3,589.0	4.8%
■ Industry	223.1	192.7	206.2	161.5	118.8	110.2	82.0	108.0	120.5	130.8	172.6	181.2	1,807.6	8.8%
■ Energy	0.6	0.5	0.4	0.2	0.2	0.3	0.4	0.7	0.4	0.3	0.3	0.3	4.5	0.3%
■ Transport	3.3	2.7	2.8	1.6	0.4	0.2	0.1	0.1	0.3	0.7	1.2	2.7	16.2	2.7%
■ Construction	2.3	1.7	1.8	1.3	0.3	0.2	0.1	0.1	0.2	0.7	1.5	2.4	12.5	6.0%
■ Farming and forestry	1.2	1.0	1.2	1.0	0.7	0.6	0.6	0.6	0.7	0.8	1.0	1.4	10.8	2.8%
■ Households	198.8	154.8	156.6	114.3	44.3	29.9	27.3	27.5	51.3	76.0	128.1	183.4	1,192.5	3.7%
■ Retail, services, schools, health care	99.7	78.2	82.1	52.4	16.8	11.4	8.0	9.2	15.7	28.6	53.2	86.3	541.6	3.2%
■ Other	0.8	0.6	0.5	0.4	0.0	0.0	0.0	0.0	0.1	0.2	0.3	0.5	3.3	0.2%

* The difference between supply and consumption includes losses of bought heat and a part of unidentified heat distribution.

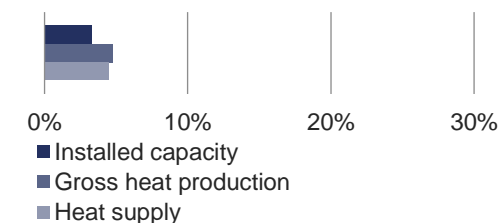
Heat supply by fuel [TJ]



Heat consumption by national economy sector [TJ]



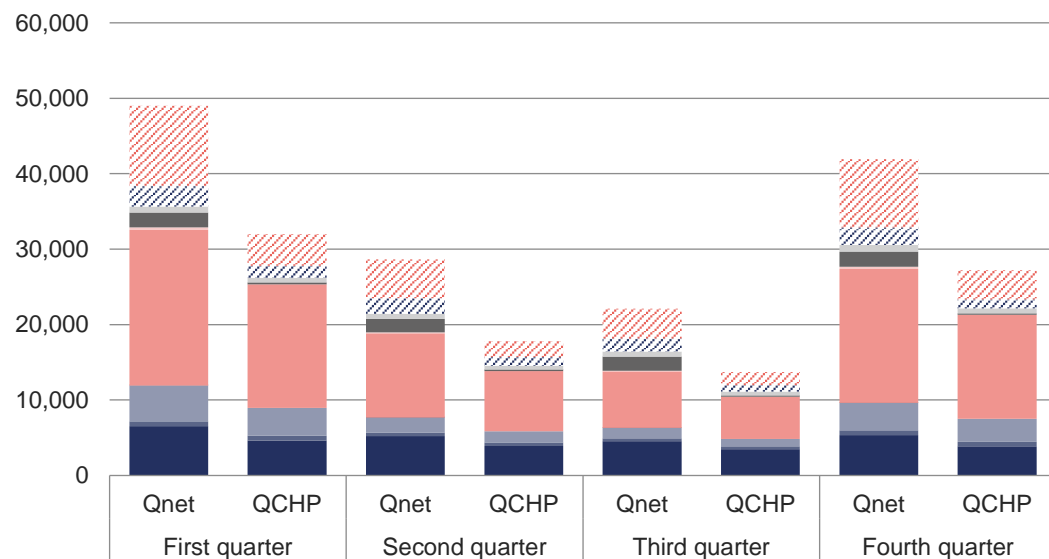
Share in CR



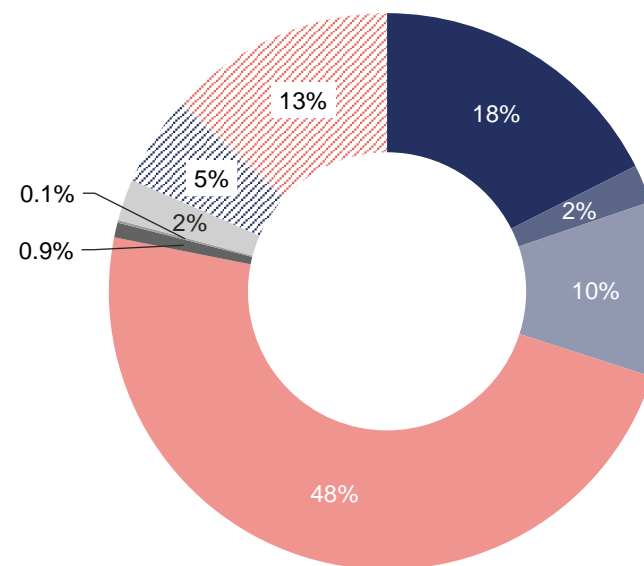
9 Net heat production and heat production from CHP [TJ]

	First quarter			Second quarter			Third quarter			Fourth quarter			Total		
	Q _{net}	Q _{CHP}	Q _{CHP} / Q _{net}	Q _{net}	Q _{CHP}	Q _{CHP} / Q _{net}	Q _{net}	Q _{CHP}	Q _{CHP} / Q _{net}	Q _{net}	Q _{CHP}	Q _{CHP} / Q _{net}	Q _{net}	Q _{CHP}	Q _{CHP} / Q _{net}
Total	49,006.8	32,017.4	65%	28,660.0	17,834.9	62%	22,091.4	13,696.2	62%	41,923.2	27,200.1	65%	141,681.5	90,748.6	64%
■ Biomass	6,529.1	4,651.1	71%	5,211.8	3,920.4	75%	4,543.7	3,487.6	77%	5,360.8	3,873.3	72%	21,645.3	15,932.3	74%
■ Biogas	642.6	609.9	95%	485.9	449.2	92%	402.1	368.7	92%	626.6	585.6	93%	2,157.1	2,013.4	93%
■ Hard coal	4,765.3	3,691.3	77%	2,017.1	1,499.5	74%	1,390.4	985.1	71%	3,648.0	3,071.3	84%	11,820.9	9,247.1	78%
■ Electrical energy	14.3	0.0	0%	12.0	0.0	0%	10.5	0.0	0%	35.6	0.0	0%	72.5	0.0	0%
■ Ambient energy (heat pump)	29.6	0.0	0%	14.9	0.0	0%	9.9	0.0	0%	26.4	0.0	0%	80.9	0.0	0%
■ Solar energy (solar panel)	0.1	0.0	0%	0.3	0.0	0%	0.2	0.0	0%	0.1	0.0	0%	0.6	0.0	0%
■ Brown coal	20,565.4	16,370.5	80%	11,089.2	7,954.0	72%	7,459.0	5,607.0	75%	17,669.2	13,760.7	78%	56,782.8	43,692.2	77%
■ Nuclear fuel	352.1	0.0	0%	143.1	0.0	0%	75.2	0.0	0%	295.4	0.0	0%	865.9	0.0	0%
■ Coke	0.0	0.0	0%	0.0	0.0	0%	0.0	0.0	0%	0.0	0.0	0%	0.0	0.0	0%
■ Waste heat	1,892.3	229.6	12%	1,789.7	210.8	12%	1,836.3	147.4	8%	1,964.8	197.8	10%	7,483.1	785.6	10%
■ Other liquid fuels	93.8	82.9	88%	16.7	2.3	14%	27.8	13.8	50%	67.1	34.9	52%	205.4	133.9	65%
■ Other solid fuels	764.1	557.3	73%	670.4	502.1	75%	652.6	502.0	77%	844.7	641.3	76%	2,931.8	2,202.6	75%
■ Other gases	2,416.9	1,578.6	65%	1,989.6	1,144.1	58%	1,651.9	855.4	52%	1,958.4	1,062.8	54%	8,016.8	4,641.0	58%
■ Other	0.0	0.0	0%	0.0	0.0	0%	0.0	0.0	0%	0.0	0.0	0%	0.0	0.0	0%
■ Fuel oils	340.1	9.0	3%	70.6	5.0	7%	107.0	20.5	19%	372.5	100.7	27%	890.2	135.3	15%
■ Natural gas	10,600.9	4,237.3	40%	5,148.9	2,147.5	42%	3,924.6	1,708.8	44%	9,053.7	3,871.8	43%	28,728.1	11,965.3	42%

Net heat production and heat production from CHP by fuel [TJ]



Shares of fuels in heat production from CHP

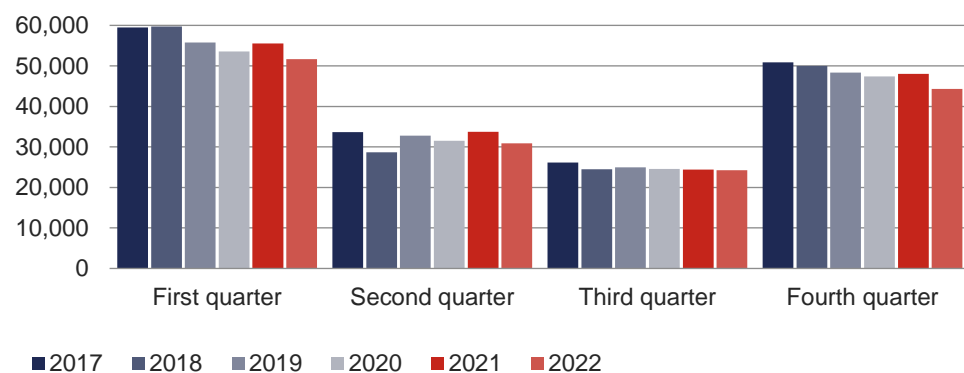


10 Heat balance, heat supply, heat consumption, and CHP

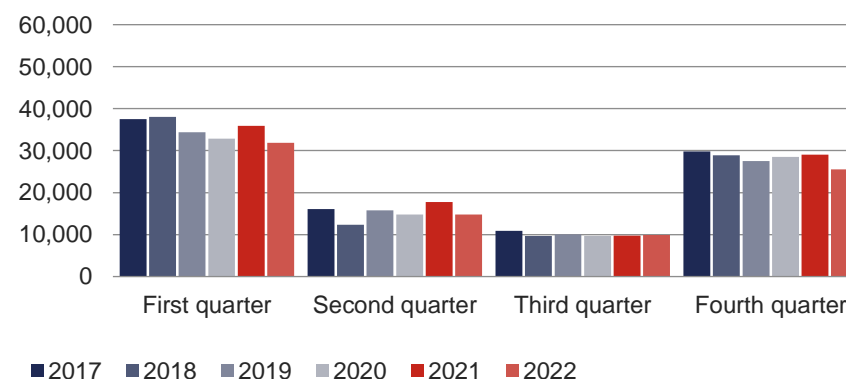
10.1 Development of the heat balance [TJ], quarter-on-quarter comparison

	First quarter	Second quarter	Third quarter	Fourth quarter	Total
Gross heat production in 2017	59,492.4	33,647.2	26,175.9	50,852.3	170,167.8
Gross heat production in 2018	59,760.7	28,688.6	24,452.4	50,022.5	162,924.3
Gross heat production in 2019	55,809.2	32,753.7	24,978.4	48,372.3	161,913.6
Gross heat production in 2020	53,528.8	31,489.6	24,527.7	47,371.7	156,917.7
Gross heat production in 2021	55,541.4	33,762.1	24,376.2	48,025.5	161,705.2
Gross heat production in 2022	51,649.9	30,879.7	24,271.0	44,292.9	151,093.5
Year-on-year change - gross heat production	-3,891.5	-2,882.5	-105.3	-3,732.5	-10,611.7
Year-on-year change - gross heat production	-7.0%	-8.5%	-0.4%	-7.8%	-6.6%
Heat supply in 2017	37,510.2	16,101.3	10,892.1	29,809.3	94,312.8
Heat supply in 2018	38,059.7	12,376.4	9,704.6	28,893.5	89,034.2
Heat supply in 2019	34,400.2	15,804.1	10,045.8	27,517.0	87,767.1
Heat supply in 2020	32,870.9	14,818.9	9,700.2	28,538.5	85,928.5
Heat supply in 2021	35,884.3	17,769.0	9,774.4	29,062.8	92,490.6
Heat supply in 2022	31,881.9	14,755.7	9,897.3	25,535.0	82,070.0
Year-on-year change - heat supply	-4,002.4	-3,013.3	122.9	-3,527.8	-10,420.6
Year-on-year change - heat supply	-11.2%	-17.0%	1.3%	-12.1%	-11.3%

Gross heat production [TJ]



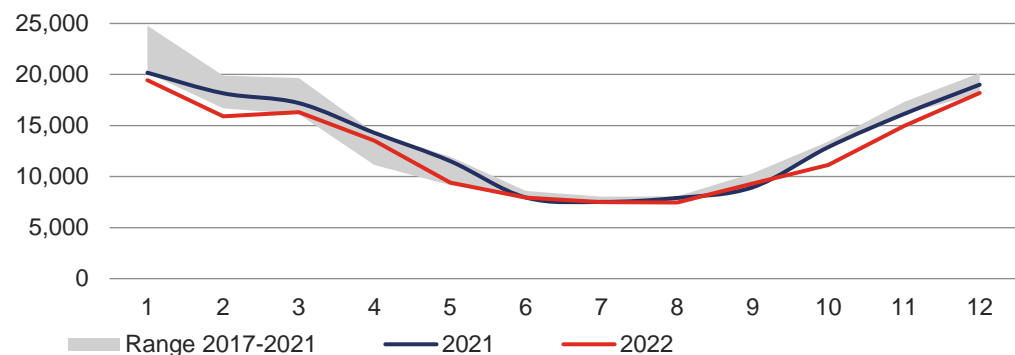
Heat supply [TJ]



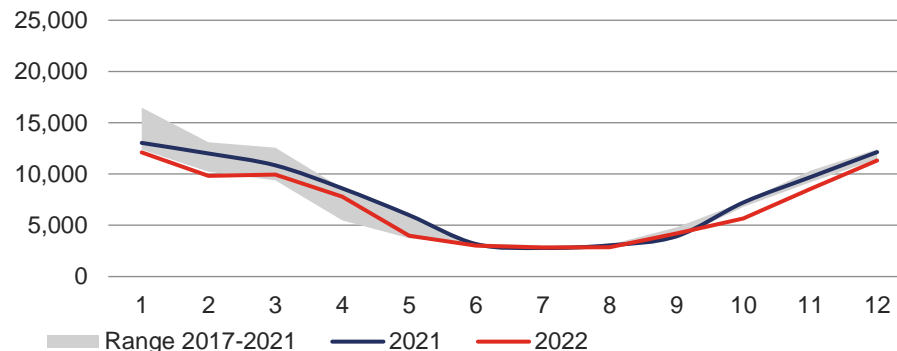
10.2 Development of the heat balance [TJ], month-on-month comparison

	January	February	March	April	May	June	July	August	September	October	November	December	Total
Gross heat production in 2017	24,789.6	18,587.7	16,115.1	14,167.0	11,027.9	8,452.3	7,792.7	8,048.4	10,334.8	13,440.6	17,328.8	20,082.9	170,167.8
Gross heat production in 2018	20,205.2	19,893.2	19,662.3	11,150.5	9,168.1	8,369.9	7,963.0	7,784.7	8,704.8	13,135.1	16,756.4	20,131.1	162,924.3
Gross heat production in 2019	22,056.2	17,612.4	16,140.6	12,700.3	11,948.7	8,104.7	7,552.8	7,913.1	9,512.5	13,236.2	16,157.6	18,978.5	161,913.6
Gross heat production in 2020	20,414.7	16,681.8	16,432.3	12,068.1	10,838.7	8,582.7	8,024.1	7,694.3	8,809.2	13,094.1	16,139.1	18,138.6	156,917.7
Gross heat production in 2021	20,176.0	18,164.8	17,200.6	14,288.3	11,521.6	7,952.2	7,518.2	7,905.0	8,953.0	12,887.3	16,133.1	19,005.1	161,705.2
Gross heat production in 2022	19,443.9	15,892.0	16,314.0	13,523.2	9,408.3	7,948.1	7,511.9	7,457.2	9,301.8	11,147.4	14,952.0	18,193.6	151,093.5
Year-on-year change - gross heat production	-732.1	-2,272.7	-886.6	-765.2	-2,113.3	-4.0	-6.3	-447.7	348.8	-1,739.9	-1,181.2	-811.5	-10,611.7
Year-on-year change - gross heat production	-3.6%	-12.5%	-5.2%	-5.4%	-18.3%	-0.1%	-0.1%	-5.7%	3.9%	-13.5%	-7.3%	-4.3%	-6.6%
Heat supply in 2017	16,476.8	11,652.7	9,380.7	7,846.2	5,061.3	3,193.8	3,007.0	3,096.8	4,788.2	7,068.4	10,311.6	12,429.3	94,312.8
Heat supply in 2018	12,397.1	13,087.2	12,575.4	5,467.8	3,743.2	3,165.4	3,043.6	2,999.8	3,661.2	6,796.5	9,833.6	12,263.3	89,034.2
Heat supply in 2019	14,046.4	10,951.4	9,402.4	6,672.5	6,033.9	3,097.7	2,995.6	2,998.1	4,052.1	6,857.3	9,198.7	11,461.0	87,767.1
Heat supply in 2020	12,828.7	10,230.7	9,811.6	6,347.8	5,236.3	3,234.8	3,001.1	2,961.1	3,737.9	7,281.4	9,737.8	11,519.3	85,928.5
Heat supply in 2021	13,037.8	12,002.0	10,844.6	8,602.3	5,992.6	3,174.1	2,786.2	3,049.8	3,938.5	7,227.7	9,693.7	12,141.4	92,490.6
Heat supply in 2022	12,108.6	9,829.5	9,943.8	7,782.4	3,971.3	3,002.0	2,836.0	2,853.2	4,208.1	5,671.6	8,529.2	11,334.2	82,070.0
Year-on-year change - heat supply	-929.2	-2,172.4	-900.8	-820.0	-2,021.3	-172.1	49.8	-196.6	269.6	-1,556.0	-1,164.5	-807.3	-10,420.6
Year-on-year change - heat supply	-7.1%	-18.1%	-8.3%	-9.5%	-33.7%	-5.4%	1.8%	-6.4%	6.8%	-21.5%	-12.0%	-6.6%	-11.3%

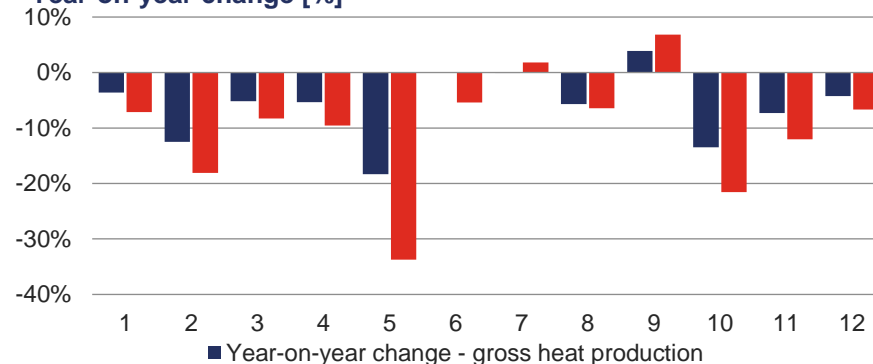
Gross heat production [TJ]



Heat supply [TJ]



Year-on-year change [%]



10.3 Gross heat production by fuel and Czech Regions [TJ]

	2017	2018	2019	2020	2021	2022	Difference (2022-2021)	Year-on-year change
Gross heat production	170,167.8	162,924.3	161,913.6	156,917.7	161,705.2	151,093.5	-10,611.7	-6.6%
Biomass	17,648.9	17,078.2	20,039.1	21,971.4	23,749.5	22,661.0	-1,088.5	-4.6%
Biogas	4,210.6	4,141.2	4,105.3	4,198.9	4,268.9	4,274.6	5.7	0.1%
Hard coal	19,473.1	16,943.3	14,806.7	13,783.9	14,593.1	12,539.5	-2,053.6	-14.1%
Electrical energy	12.9	15.4	17.5	13.3	38.0	72.5	34.4	90.5%
Ambient energy (heat pump)	86.1	86.6	70.7	92.8	100.7	80.9	-19.8	-19.6%
Solar energy (solar panel)	0.4	0.9	0.5	0.5	0.6	0.6	0.1	12.3%
Brown coal	70,523.4	68,822.1	67,378.0	62,430.9	60,659.1	59,121.9	-1,537.1	-2.5%
Nuclear fuel	908.1	864.3	852.9	786.6	863.5	865.9	2.4	0.3%
Coke	0.4	0.6	0.2	0.1	0.1	0.0	-0.1	-100.0%
Waste heat	8,866.3	7,905.6	8,079.1	7,393.7	8,343.6	7,932.8	-410.9	-4.9%
Other liquid fuels	802.6	524.8	549.4	581.9	349.6	248.4	-101.2	-28.9%
Other solid fuels	4,590.2	4,621.6	4,471.7	4,585.7	4,423.7	4,118.5	-305.2	-6.9%
Other gases	10,390.4	11,021.7	10,470.8	9,028.0	9,421.2	8,698.5	-722.7	-7.7%
Other	0.0	0.0	0.0	0.0	0.0	0.0	0.0	0.0%
Fuel oils	430.3	183.6	151.1	182.8	363.8	922.1	558.3	153.4%
Natural gas	32,224.0	30,714.6	30,920.5	31,867.2	34,529.8	29,556.2	-4,973.6	-14.4%

	2017	2018	2019	2020	2021	2022	Difference (2022-2021)	Year-on-year change
Gross heat production	170,167.8	162,924.3	161,913.6	156,917.7	161,705.2	151,093.5	-10,611.7	-6.6%
Prague	6,513.7	6,063.6	5,633.6	5,417.9	5,906.5	5,050.1	-856.4	-14.5%
Jihočeský Region	7,990.7	7,562.4	7,421.4	7,376.0	7,685.5	7,274.7	-410.8	-5.3%
Jihomoravský Region	8,316.8	7,953.9	7,658.5	7,704.9	8,098.0	7,279.3	-818.7	-10.1%
Karlovarský Region	15,685.1	15,930.2	15,117.2	13,067.3	8,275.6	9,436.0	1,160.4	14.0%
Vysočina Region	3,824.9	3,581.2	3,422.7	3,493.2	3,949.4	3,533.7	-415.6	-10.5%
Královéhradecký Region	4,739.1	4,633.7	4,584.5	4,417.0	4,724.6	4,462.2	-262.4	-5.6%
Liberecký Region	2,745.8	2,604.1	2,554.2	2,463.3	2,637.6	2,376.8	-260.7	-9.9%
Moravskoslezský Region	33,398.8	32,381.5	30,852.1	30,371.8	32,270.6	29,706.2	-2,564.5	-7.9%
Olomoucký Region	7,051.9	6,467.7	6,464.6	6,387.0	6,841.1	6,491.1	-350.0	-5.1%
Pardubický Region	6,608.7	6,646.1	6,740.4	6,530.2	7,040.0	6,415.9	-624.1	-8.9%
Plzeňský Region	6,016.3	5,635.7	5,718.7	5,655.2	6,069.4	5,612.5	-456.9	-7.5%
Středočeský Region	30,886.7	28,289.2	27,676.8	26,020.3	28,125.8	25,740.8	-2,385.0	-8.5%
Ústecký Region	28,158.0	27,447.0	30,302.9	30,482.4	32,490.2	30,478.4	-2,011.9	-6.2%
Zlínský Region	8,231.3	7,728.2	7,765.9	7,531.2	7,590.9	7,235.8	-355.1	-4.7%

10.4 Heat supply by fuel and Czech Regions [TJ]

	2017	2018	2019	2020	2021	2022	Difference (2022-2021)	Year-on-year change
Heat supply	94,312.8	89,034.2	87,767.1	85,928.5	92,490.6	82,070.0	-10,420.6	-11.3%
Biomass	6,082.2	5,759.4	6,498.7	7,593.0	8,742.9	7,555.1	-1,187.8	-13.6%
Biogas	494.4	515.1	515.1	542.1	583.7	602.5	18.8	3.2%
Hard coal	13,370.0	11,279.0	9,965.5	9,169.3	9,782.4	8,294.2	-1,488.2	-15.2%
Electrical energy	8.8	11.9	13.4	8.8	33.5	55.9	22.4	66.7%
Ambient energy (heat pump)	75.6	74.5	69.1	89.9	96.9	76.1	-20.8	-21.4%
Solar energy (solar panel)	0.4	0.9	0.5	0.5	0.6	0.6	0.1	11.2%
Brown coal	42,615.2	40,940.7	40,138.3	37,446.9	39,422.6	36,311.5	-3,111.1	-7.9%
Nuclear fuel	247.8	236.4	234.0	199.1	211.0	233.9	22.9	10.8%
Coke	0.4	0.6	0.2	0.1	0.1	0.0	-0.1	-100.0%
Waste heat	944.2	1,055.2	978.3	969.9	874.1	822.5	-51.5	-5.9%
Other liquid fuels	156.0	108.6	89.6	93.0	98.9	55.5	-43.4	-43.9%
Other solid fuels	2,925.7	2,872.9	2,824.1	3,027.5	2,892.2	2,572.6	-319.6	-11.1%
Other gases	3,974.3	4,026.1	3,938.3	3,422.8	3,974.8	3,309.2	-665.6	-16.7%
Other	0.0	0.0	0.0	0.0	0.0	0.0	0.0	0.0%
Fuel oils	328.6	90.9	96.1	134.9	289.9	573.3	283.4	97.7%
Natural gas	23,089.0	22,062.0	22,405.8	23,230.7	25,487.2	21,607.1	-3,880.1	-15.2%

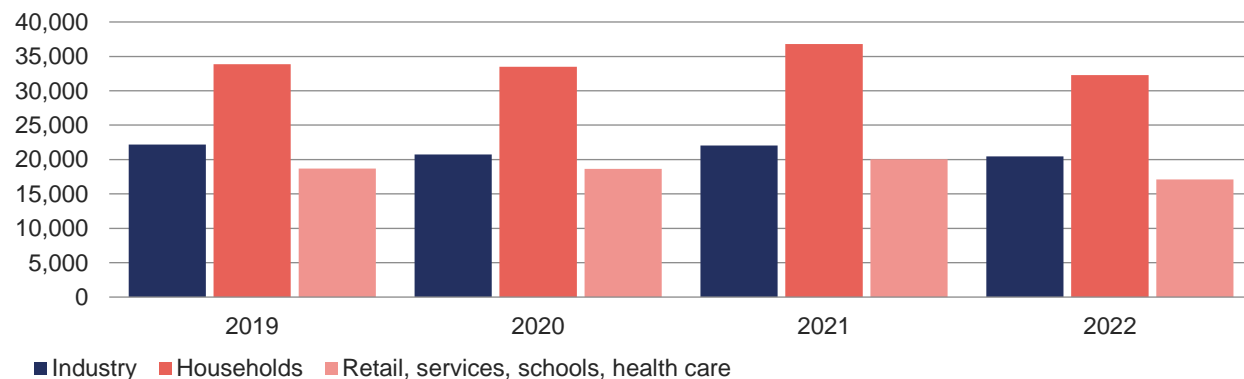
	2017	2018	2019	2020	2021	2022	Difference (2022-2021)	Year-on-year change
Heat supply	94,312.8	89,034.2	87,767.1	85,928.5	92,490.6	82,070.0	-10,420.6	-11.3%
Prague	5,035.8	4,535.4	4,187.4	4,112.2	4,544.4	3,793.1	-751.3	-16.5%
Jihočeský Region	5,365.8	5,054.8	5,010.8	4,954.4	5,133.5	4,658.3	-475.1	-9.3%
Jihomoravský Region	5,808.9	5,522.9	5,341.6	5,413.6	5,787.8	5,176.3	-611.5	-10.6%
Karlovarský Region	4,116.6	3,857.0	3,445.4	3,172.5	3,503.6	3,258.3	-245.3	-7.0%
Vysočina Region	1,572.9	1,462.7	1,510.3	1,544.9	1,746.8	1,538.6	-208.2	-11.9%
Královéhradecký Region	3,085.2	2,983.9	2,983.0	2,888.5	3,086.7	2,836.8	-249.8	-8.1%
Liberecký Region	2,309.3	2,150.4	2,145.2	2,053.3	2,233.2	1,952.4	-280.8	-12.6%
Moravskoslezský Region	16,589.4	15,533.7	15,065.6	14,829.8	16,076.3	13,999.6	-2,076.8	-12.9%
Olomoucký Region	3,597.3	3,314.4	3,270.5	3,331.0	3,554.0	3,152.5	-401.5	-11.3%
Pardubický Region	4,382.4	4,086.2	4,069.0	3,980.5	4,406.2	3,902.7	-503.5	-11.4%
Plzeňský Region	4,411.6	4,077.5	4,076.1	3,969.1	4,366.4	3,908.3	-458.1	-10.5%
Středočeský Region	20,877.0	20,229.2	20,302.1	19,644.2	21,209.0	18,709.8	-2,499.3	-11.8%
Ústecký Region	12,877.5	12,237.5	12,339.0	12,165.5	12,750.3	11,515.5	-1,234.8	-9.7%
Zlínský Region	4,283.2	3,988.3	4,021.0	3,868.9	4,092.5	3,667.7	-424.8	-10.4%

10.5 Heat consumption [TJ]

	2019	2020	2021	2022	Difference (2022-2021)	Year-on- year change
Heat consumption by national economy sector *	79,902.9	77,955.3	84,233.6	74,791.8	-9,441.9	-11.2%
■ Industry	22,189.1	20,738.1	22,045.4	20,452.9	-1,592.5	-7.2%
■ Energy	2,055.1	2,142.5	2,205.3	1,738.9	-466.4	-21.2%
■ Transport	690.7	675.5	741.3	598.4	-142.9	-19.3%
■ Construction	402.2	253.0	233.2	206.6	-26.7	-11.4%
■ Farming and forestry	313.6	383.3	423.6	388.4	-35.2	-8.3%
■ Households	33,848.8	33,508.5	36,775.3	32,289.0	-4,486.3	-12.2%
■ Retail, services, schools, health care	18,669.8	18,658.0	20,036.6	17,105.5	-2,931.1	-14.6%
■ Other	1,733.6	1,596.4	1,772.9	2,012.1	239.2	13.5%

* Does not include unidentified heat distribution.

Heat consumption [TJ]

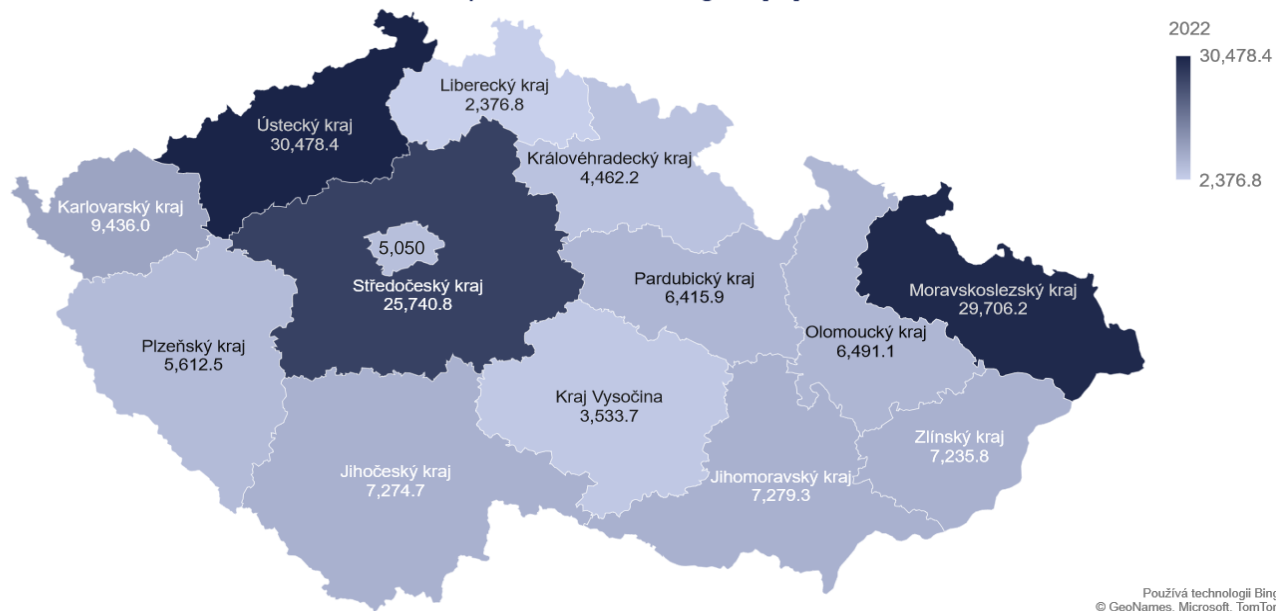


10.6 Heat production from CHP [TJ]

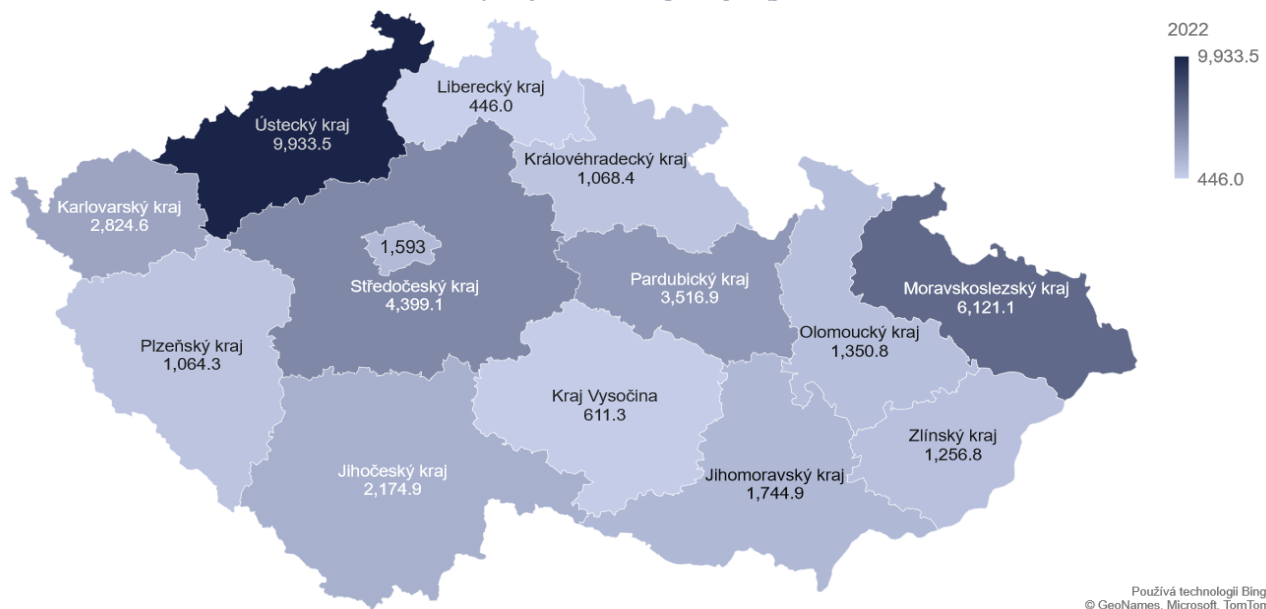
	2017	2018	2019	2020	2021	2022	Difference (2022-2021)	Year-on-year change
Heat production from CHP	103,621.0	102,301.6	99,298.9	100,297.1	99,014.9	90,748.6	-8,266.3	-8.3%
■ Biomass	10,528.0	12,114.9	12,780.7	17,194.5	16,038.2	15,932.3	-105.9	-0.7%
■ Biogas	2,003.6	1,996.6	1,972.0	2,009.3	2,061.9	2,013.4	-48.5	-2.4%
■ Hard coal	14,725.0	12,784.3	11,105.7	10,744.5	11,181.8	9,247.1	-1,934.7	-17.3%
■ Electrical energy	0.0	0.0	0.0	0.0	0.0	0.0	0.0	0.0%
■ Ambient energy (heat pump)	0.0	0.0	0.0	0.0	0.0	0.0	0.0	0.0%
■ Solar energy (solar panel)	0.0	0.0	0.0	0.0	0.0	0.0	0.0	0.0%
■ Brown coal	57,245.4	56,044.9	54,526.2	50,558.5	48,450.2	43,692.2	-4,758.0	-9.8%
■ Nuclear fuel	0.0	0.0	0.0	0.0	0.0	0.0	0.0	0.0%
■ Coke	0.0	0.0	0.0	0.0	0.0	0.0	0.0	0.0%
■ Waste heat	630.1	749.0	697.7	787.2	776.1	785.6	9.5	1.2%
■ Other liquid fuels	353.2	296.6	228.0	325.4	199.1	133.9	-65.2	-32.7%
■ Other solid fuels	2,492.9	2,354.4	2,023.9	2,365.8	2,266.6	2,202.6	-64.0	-2.8%
■ Other gases	4,556.3	4,795.1	4,451.3	4,356.8	4,861.5	4,641.0	-220.5	-4.5%
■ Other	0.0	0.0	0.0	0.0	0.0	0.0	0.0	0.0%
■ Fuel oils	163.7	43.1	24.4	17.0	15.8	135.3	119.4	754.9%
■ Natural gas	10,922.9	11,122.7	11,489.1	11,938.2	13,163.8	11,965.3	-1,198.5	-9.1%

11 ADDITIONAL GRAPHS AND THE HEAT BALANCE DIAGRAM FOR 2021

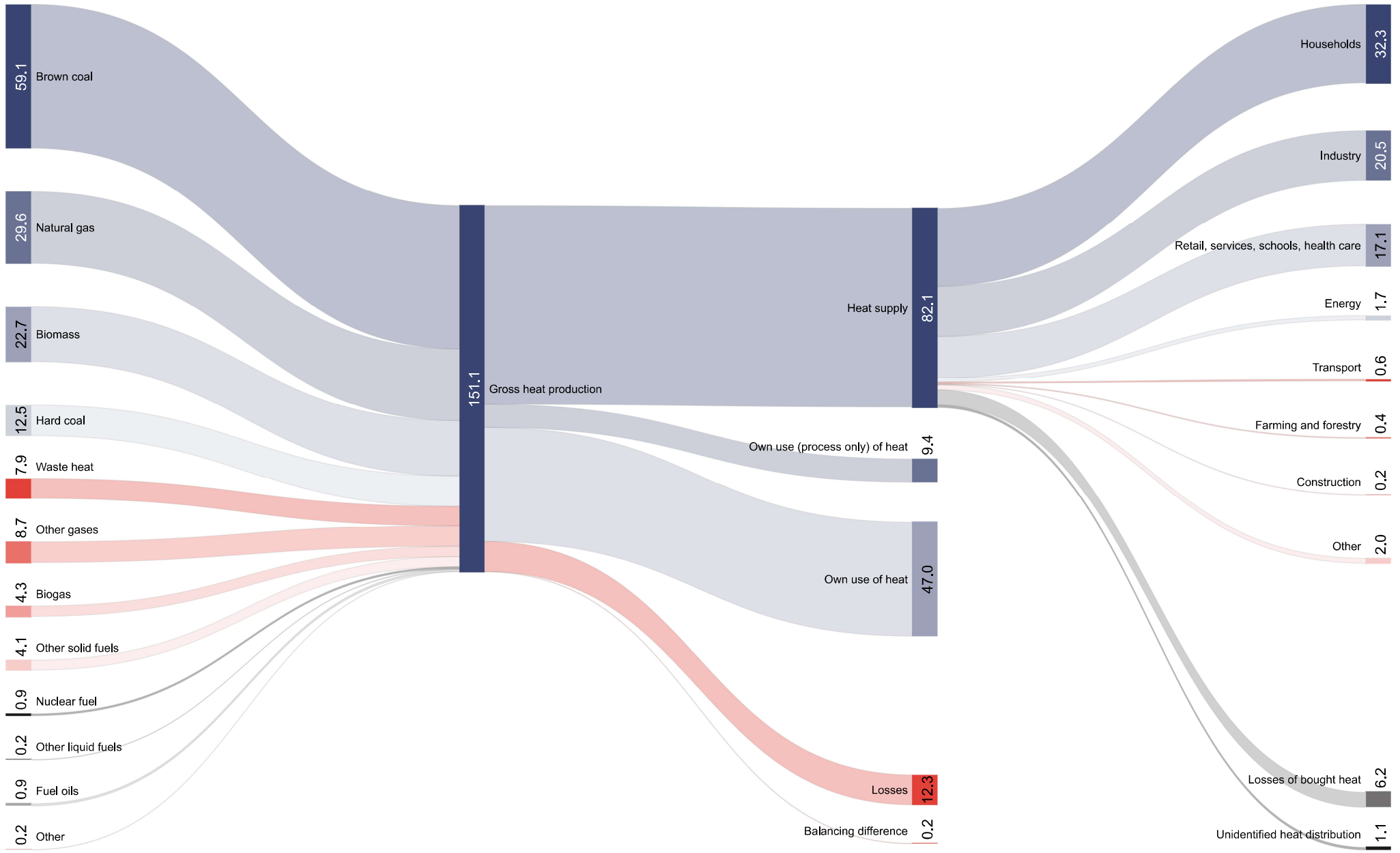
Gross heat production in Czech Regions [TJ]



Installed capacity in Czech Regions [MW]



Heat balance diagram for 2022 [PJ]



Statistics and Quality Monitoring Unit
teplo.statistika@eru.cz

Released 09/2023



Energy Regulatory Office
Masarykovo náměstí 91/5, 586 01 Jihlava
+420 564 578 666
podatelna@eru.cz
ERO mailbox ID eeuaau7
www.eru.cz