

# YEARLY REPORT ON THE OPERATION OF CZECH HEAT SUPPLY SYSTEMS FOR 2021



# CONTENTS

1	ABBREVIATIONS, DEFINITIONS AND KEY RELATIONSHIPS	4
2	COMMENTARY	5
3	HEAT BALANCE	6
4	HEAT PRODUCTION	7
4.1	Gross heat production by fuel	7
4.2	Gross heat production in Czech Regions	8
4.3	Gross heat production by fuel in Czech Regions	9
5	HEAT SUPPLY	10
5.1	Heat supply by fuel	10
5.2	Heat supply in Czech Regions	11
5.3	Heat supply by fuel in Czech Regions	12
5.4	Supply of heat from coal, biomass and biogas	13
6	INSTALLED CAPACITY OF HEAT GENERATING IN CZECH REGIONS	14
7	HEAT CONSUMPTION	15
7.1	Heat consumption by national economy sector	15
7.2	Heat consumption by national economy sector in Czech Regions	16
8	HEAT PRODUCTION, SUPPLY AND CONSUMPTION BY CZECH REGION	17
8.1	Heat production, supply and consumption: Prague	17
8.2	Heat production, supply and consumption: Jihočeský Region	18
8.3	Heat production, supply and consumption: Jihomoravský Region	19
8.4	Heat production, supply and consumption: Karlovarský Region	20
8.5	Heat production, supply and consumption: Vysočina Region	21
8.6	Heat production, supply and consumption: Královéhradecký Region	22
8.7	Heat production, supply and consumption: Liberecký Region	23
8.8	Heat production, supply and consumption: Moravskoslezský Region	24
8.9	Heat production, supply and consumption: Olomoucký Region	25
8.10	Heat production, supply and consumption: Pardubický Region	26
8.11	Heat production, supply and consumption: Plzeňský Region	27
8.12	Heat production, supply and consumption: Středočeský Region	28
8.13	Heat production, supply and consumption: Ústecký Region	29
8.14	Heat production, supply and consumption: Zlínský Region	30
9	NET HEAT PRODUCTION AND HEAT PRODUCTION FROM CHP	31
10	HEAT BALANCE, HEAT SUPPLY, HEAT CONSUMPTION, AND CHP	32
10.1	Development of the heat balance, quarter-on-quarter comparison	32
10.2	Development of the heat balance, month-on-month comparison	33
10.3	Gross heat production by fuel and Czech Regions	34
10.4	Heat supply by fuel and Czech Regions	35
10.5	Heat consumption	36
10.6	Heat production from CHP	37
11	ADDITIONAL GRAPHS AND THE HEAT BALANCE DIAGRAM FOR 2021	38

## INTRODUCTION

Under Section 17 (7) (m) of Act No 458/2000 as amended (the Energy Act), the Energy Regulatory Office (ERO) publishes the Yearly Report on the Operation of Heat Supply Systems in the CR for 2021. The statistics contained herein are mainly intended for Czech governmental authorities and institutions and those of the European Union, and the expert circles.

The ERO obtains data for the yearly report under ERO Public Notice 404/2016 on the particulars and structure of the returns required for preparing reports on the operation of systems in energy industries, including the dates, scope and rules for preparing the returns (the statistics public notice), as amended, which came into effect on 1 January 2017.

All the details of the methodology for reporting data for the ERO statistics are specified in the ERO's Explanatory Statement 8/2018 of 14 September 2018 on the method of completing the returns under the statistics public notice for the electricity and heat supply industries. The Explanatory Statement and the current returns are posted on the ERO's website.

All information for this yearly report has been obtained from licensed entities.

The Yearly Report on the Operation of Heat Supply Systems in the CR for 2021 follows up on the yearly reports released in preceding years and provides information about the heat supply industry's key statistics for 2021, thereby complementing the Yearly Report on the Operation of the Czech Electricity Grid for 2021, which also contains data on combined heat & power generation (CHP). The present report covers all heat produced in licensed activities, including CHP, and also statistics on heat balance, supply and consumption by category. The report also contains an overview of the installed capacities in the Czech heat producing plants and some Region-specific evaluations. The yearly report for 2021 is based on the data in the report for 4Q 2021 and contains some data that is more accurate.

You are welcome to send your questions and comments to [teplo.statistika@eru.cz](mailto:teplo.statistika@eru.cz)

# 1 ABBREVIATIONS, DEFINITIONS AND KEY RELATIONSHIPS

**CZ-NACE** Classification of economic activities, CZ-NACE, in accordance with the Czech Statistical Office

**CHP** Combined heat and power generation

**SZT** Heat supply system

**Qnet** Net heat production

**QCHP** Supply of useful heat from CHP

**PHA** Prague

**JHČ** Jihočeský (South Bohemian) Region

**JHM** Jihomoravský (South Moravian) Region

**KVK** Karlovarský (Karlovy Vary) Region

**VYS** Vysočina Region

**HKK** Královéhradecký (Hradec Králové) Region

**LBK** Liberecký (Liberec) Region

**MSK** Moravskoslezský (Moravian-Silesian) Region

**OLK** Olomoucký (Olomouc) Region

**PAK** Pardubický (Pardubice) Region

**PLK** Plzeňský (Plzeň) Region

**STČ** Středočeský (Central Bohemian) Region

**ULK** Ústecký (Ústí nad Labem) Region

**ZLK** Zlínský (Zlín) Region

## **Gross heat production =**

Gross heat production in plants, without heat used for electricity generation

## **Net heat production =**

Gross heat production without own use (process only) heat consumption

## **Own use (process only) of heat =**

Heat consumption for heat and power generation, which is required for operating the process of heat and power generation

## **Losses =**

Losses in heat production and distribution losses (in heat distribution)

## **Own use of heat =**

Heat consumption for the producer's own consumption (without own use (process only) of heat)

## **Heat supply =**

Thermal energy quantity supplied into heat supply systems

## **Balancing difference =**

Gross heat production - own use (process only) of heat - losses - supply to the producer's own enterprise - heat supply

## **Heat consumption =**

Final heat consumption in each of the sectors of the national economy

## 2 COMMENTARY

The basic chapter contains the heat balance; it shows that gross heat production totalled 161,657.4 TJ in 2021 and 3% more heat was produced compared with 2020 (156,917.7 TJ). Approximately 29% of gross production was consumed in the entity's own enterprise or facility (these are mostly works' own CHP plants that are not included in the classification of economic activities (CZ-NACE) in group 35 Electricity, gas, steam and air conditioning supply). Heat supply amounted to 92,429.4 TJ, up by 7.6% on 2020 (85,928.5 TJ). Heat supply accounted for approximately 57%, own use for process purposes accounted for 6%, and losses accounted for 8% of gross heat production. Most of the heat was produced from brown coal (38%), followed by natural gas (21%) and biomass (15%). The largest quantity of heat was produced in the Ústecký Region (20.1%), followed by the Moravskoslezský Region (20%) and the Středočeský Region (17%). The structure of heat production by fuel differs in each of the Regions depending on fuel availability. The decline in gross heat production from brown coal continues; compared with 2017, the decline was by 14%. On the other hand, in the case of biomass it increased by 35%. The largest quantity of heat from hard coal was produced in the Moravskoslezský Region (94%), from brown coal in the Ústecký Region (32%), from natural gas in the Středočeský Region (21%), from biomass in the Ústecký Region (36%), and from biogas in the Vysočina Region (15%).

The structure of heat supply by fuel is similar to that of gross heat production (43% from brown coal, 28% from natural gas, and 11% from hard coal); in terms of the structure of heat supply by Region, the Středočeský Region is placed first, followed by the Moravskoslezský Region and the Ústecký Region. At the end of 2021, the installed thermal capacity of heat generating plants totalled 39,043.2 MW. Chapter 7 shows a heat consumption breakdown by sector of the national economy. In 2021, households consumed 36,758.4 TJ, accounting for 44% of total consumption, industry consumed 22,024.8 TJ (26% of total consumption), and the trade and service sector consumed 20,012.3 TJ (24% of total consumption). Chapter 8 summarises gross heat production, and heat supply and consumption in the Czech Regions.

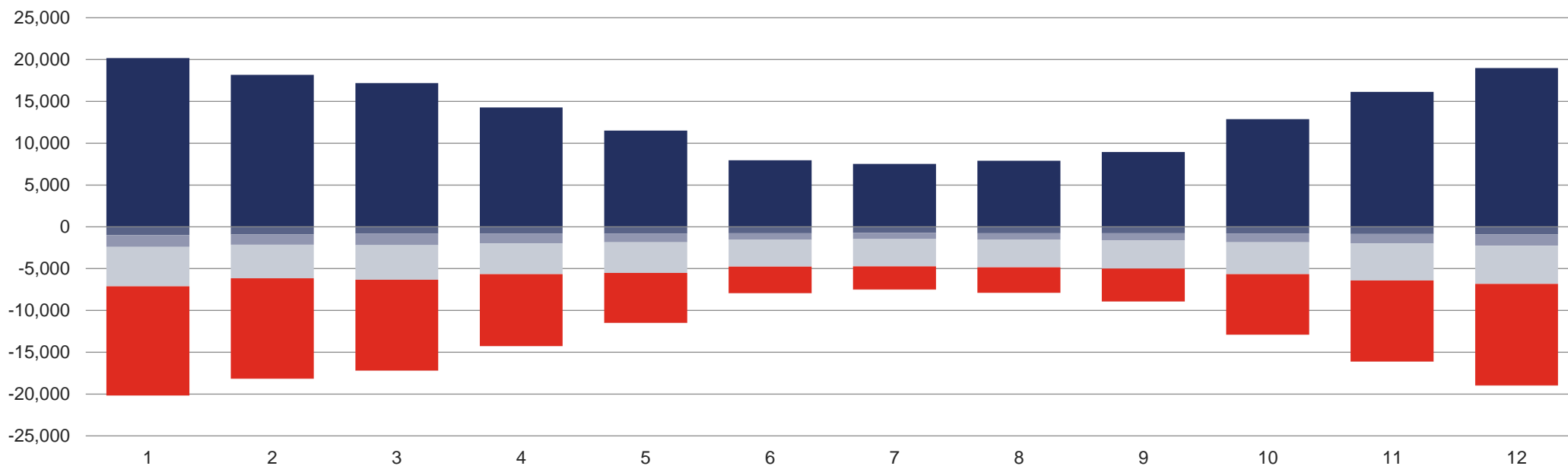
Combined heat and power generation (CHP) produced 99,014.9 TJ of useful heat, accounting for 65% of net heat production. Most of useful heat from CHP was produced from brown coal (49%), followed by biomass (16%) and natural gas (13%). The small share of useful heat from natural gas in net heat (39%) is attributable to the larger number of natural gas heating plants (substations) than cogeneration units. In 2021, CHP produced 1.3% less heat than in 2020, while heat production from natural gas and biogas rose by 10% and 2.6% respectively. On the other hand, production from biomass decreased by 7%.

A comparison of each of the quarters of the two years shows the largest increase in gross heat production and heat supply in the second quarter of 2021, specifically by 7.2% and 19.8% respectively compared with the second quarter of 2020. A month-to-month comparison already indicates quite significant variations in gross production, caused by the weather. In almost all Czech Regions, gross heat production in 2021 rose by units of per cent compared with 2020; it rose more, by 13%, in the Vysočina Region, while it dropped by 37% in the Karlovarský Region due to a drop in own use of heat at Sokolovská uhelná, právní nástupce, a.s. (coal mining phase-out). On the contrary, heat supply increased in all Czech Regions, most of all in the Vysočina Region (by 13%), the Pardubický Region (by 11%), and the Karlovarský Region (by 10%).

### 3 HEAT BALANCE [TJ]

	First quarter			Second quarter			Third quarter			Fourth quarter			Total
	January	February	March	April	May	June	July	August	September	October	November	December	
■ Gross heat production	55,526.6			33,752.0			24,370.2			48,008.6			161,657.4
■ Own use (process only) of heat	20,171.3	18,159.6	17,195.8	14,283.0	11,518.7	7,950.3	7,516.8	7,902.9	8,950.5	12,884.3	16,126.6	18,997.6	9,975.6
■ Losses	3,967.6			2,976.3			2,353.6			3,486.4			12,783.9
■ Own use of heat	1,391.9	1,220.6	1,355.1	1,182.8	1,017.4	776.1	740.9	788.4	824.4	1,037.5	1,121.0	1,327.9	46,190.3
■ Heat supply	35,864.9			17,756.2			9,766.4			29,041.9			92,429.4
■ Balancing difference	13,031.2	11,995.3	10,838.3	8,596.0	5,988.6	3,171.6	2,784.2	3,046.9	3,935.3	7,223.6	9,685.8	12,132.5	278.3
	77.1			76.5			62.5			62.2			
	27.3	25.2	24.6	26.1	29.6	20.8	19.1	21.3	22.1	14.9	11.7	35.6	

Heat balance [TJ]

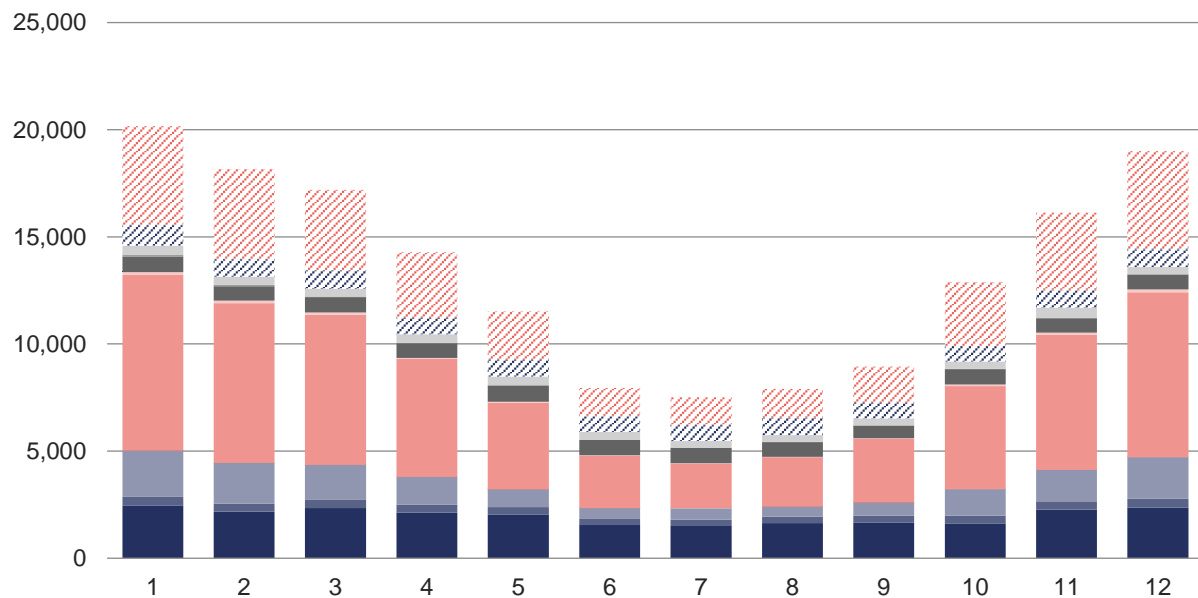


# 4 HEAT PRODUCTION

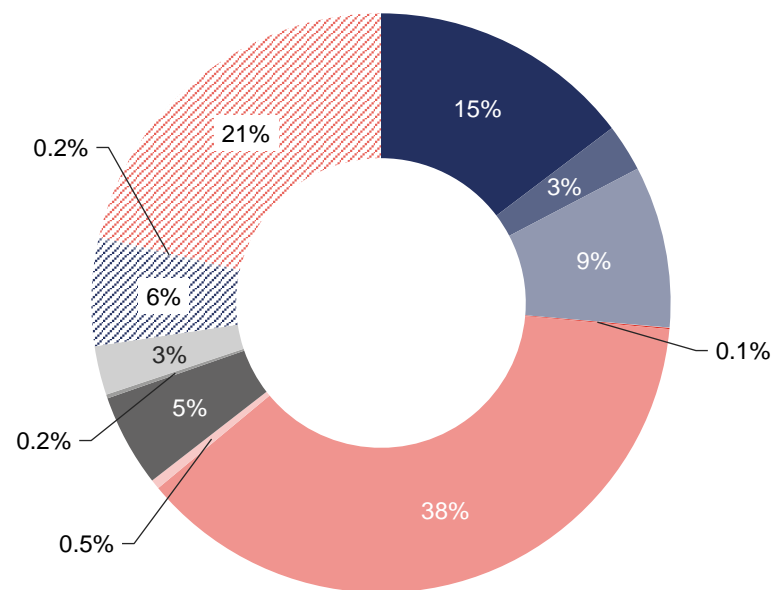
## 4.1 Gross heat production by fuel [TJ]

	First quarter			Second quarter			Third quarter			Fourth quarter			Total
	January	February	March	April	May	June	July	August	September	October	November	December	
<b>Gross heat production</b>	<b>55,526.6</b>			<b>33,752.0</b>			<b>24,370.2</b>			<b>48,008.6</b>			<b>161,657.4</b>
	<b>20,171.3</b>	<b>18,159.6</b>	<b>17,195.8</b>	<b>14,283.0</b>	<b>11,518.7</b>	<b>7,950.3</b>	<b>7,516.8</b>	<b>7,902.9</b>	<b>8,950.5</b>	<b>12,884.3</b>	<b>16,126.6</b>	<b>18,997.6</b>	
■ Biomass	2,444.5	2,178.1	2,339.1	2,130.6	2,038.2	1,545.6	1,511.0	1,638.5	1,664.7	1,625.1	2,265.3	2,357.6	23,738.3
■ Biogas	419.2	373.8	400.1	369.7	348.8	290.1	287.5	298.7	312.4	364.1	387.2	417.4	4,268.9
■ Hard coal	2,146.7	1,902.3	1,622.4	1,294.2	829.4	502.5	534.2	478.2	630.5	1,237.5	1,469.1	1,946.2	14,593.1
■ Electrical energy	2.2	2.5	2.7	3.3	2.8	3.3	4.4	4.0	3.8	3.7	2.6	2.9	38.0
■ Ambient energy (heat pump)	14.4	13.0	10.8	9.4	7.2	3.5	3.1	3.0	4.7	8.6	10.4	12.6	100.7
■ Solar energy (solar panel)	0.0	0.0	0.0	0.1	0.1	0.1	0.1	0.1	0.1	0.1	0.0	0.0	0.6
■ Brown coal	8,185.4	7,434.5	6,983.3	5,497.5	4,036.9	2,444.7	2,071.4	2,291.9	2,952.3	4,794.7	6,295.8	7,673.7	60,661.9
■ Nuclear fuel	145.8	124.4	107.9	41.3	31.6	23.6	18.1	21.8	33.4	74.8	106.0	134.6	863.5
■ Coke	0.1	0.0	0.0	0.0	0.0	0.0	0.0	0.0	0.0	0.0	0.0	0.0	0.1
■ Waste heat	722.4	659.6	713.8	696.0	774.6	710.8	723.8	684.1	587.2	713.0	664.9	693.2	8,343.6
■ Other liquid fuels	86.7	75.3	30.3	11.1	11.5	19.8	11.6	13.5	11.0	18.4	32.9	27.5	349.6
■ Other solid fuels	431.6	378.2	358.2	394.0	401.9	360.2	318.9	320.6	331.4	339.9	455.7	333.1	4,423.7
■ Other gases	902.7	768.4	864.1	776.9	795.2	714.0	731.2	801.3	736.4	724.2	809.0	797.6	9,421.2
■ Other	0.0	0.0	0.0	0.0	0.0	0.0	0.0	0.0	0.0	0.0	0.0	0.0	0.0
■ Fuel oils	59.0	64.6	25.3	5.6	3.4	47.2	27.2	9.0	6.7	13.4	28.8	73.5	363.8
■ Natural gas	4,610.6	4,184.6	3,737.9	3,053.1	2,237.2	1,285.0	1,274.3	1,338.2	1,675.9	2,967.0	3,598.9	4,527.7	34,490.3

Gross heat production [TJ]



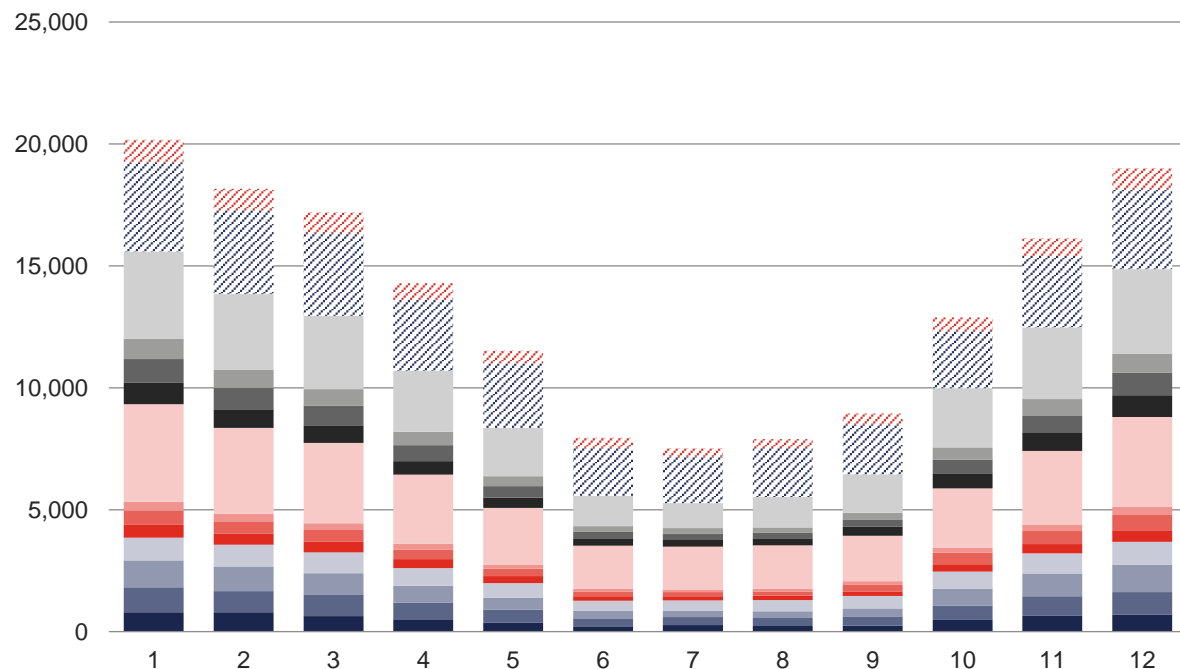
Shares of fuels in gross heat production



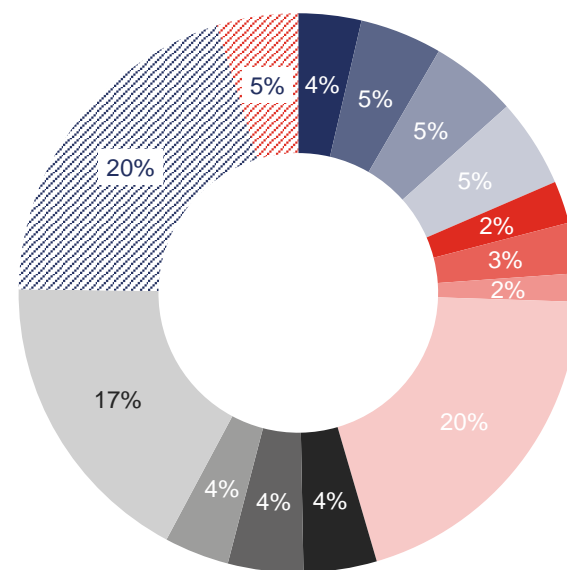
## 4.2 Gross heat production in Czech Regions [TJ]

	First quarter			Second quarter			Third quarter			Fourth quarter			Total
	January	February	March	April	May	June	July	August	September	October	November	December	
<b>Gross heat production</b>	<b>55,526.6</b>			<b>33,752.0</b>			<b>24,370.2</b>			<b>48,008.6</b>			<b>161,657.4</b>
	<b>20,171.3</b>	<b>18,159.6</b>	<b>17,195.8</b>	<b>14,283.0</b>	<b>11,518.7</b>	<b>7,950.3</b>	<b>7,516.8</b>	<b>7,902.9</b>	<b>8,950.5</b>	<b>12,884.3</b>	<b>16,126.6</b>	<b>18,997.6</b>	
■ Prague	799.4	789.8	631.9	508.1	362.7	214.2	275.8	225.8	245.9	473.3	659.4	688.8	5,875.0
■ Jihočeský Region	1,019.1	877.0	869.7	676.0	540.0	336.6	317.0	336.4	375.3	595.7	797.6	936.1	7,676.4
■ Jihomoravský Region	1,099.4	1,004.3	900.2	701.1	487.1	290.2	266.3	278.3	333.6	692.3	920.3	1,125.1	8,098.2
■ Karlovarský Region	941.0	890.9	853.2	720.7	605.1	419.8	417.3	447.1	515.5	699.8	830.3	934.2	8,275.0
■ Vysočina Region	513.7	455.0	433.5	367.9	287.8	192.9	177.4	185.1	171.8	308.7	388.6	466.9	3,949.4
■ Královéhradecký Region	599.9	503.1	474.3	383.7	301.1	200.1	171.7	178.0	290.2	460.0	526.5	636.0	4,724.6
■ Liberecký Region	356.9	316.2	287.6	244.3	172.8	109.9	101.9	103.2	133.3	209.2	267.1	335.1	2,637.6
■ Moravskoslezský Region	3,998.5	3,524.4	3,294.4	2,833.1	2,313.6	1,758.3	1,764.3	1,781.6	1,861.8	2,442.3	3,015.8	3,682.7	32,270.6
■ Olomoucký Region	893.1	753.4	691.7	554.5	421.8	306.9	290.2	297.8	380.7	616.0	744.9	890.2	6,841.2
■ Pardubický Region	962.9	884.0	825.7	662.3	471.0	264.4	246.3	223.2	295.5	560.1	722.7	921.7	7,039.7
■ Plzeňský Region	817.0	729.0	685.9	547.6	405.2	234.0	213.0	212.7	273.3	495.9	669.9	786.0	6,069.4
■ Středočeský Region	3,588.1	3,117.0	2,999.8	2,489.7	1,981.7	1,247.7	1,028.4	1,249.7	1,579.7	2,435.4	2,936.4	3,465.4	28,119.1
■ Ústecký Region	3,645.4	3,439.0	3,392.5	2,912.9	2,648.7	1,972.6	1,901.1	2,007.2	2,040.7	2,326.9	2,929.1	3,273.2	32,489.2
■ Zlínský Region	937.0	876.6	855.4	681.2	520.1	402.6	346.1	376.9	453.1	568.9	718.0	856.2	7,592.1

Gross heat production in Czech Regions [TJ]



Czech Regions' share in gross heat production

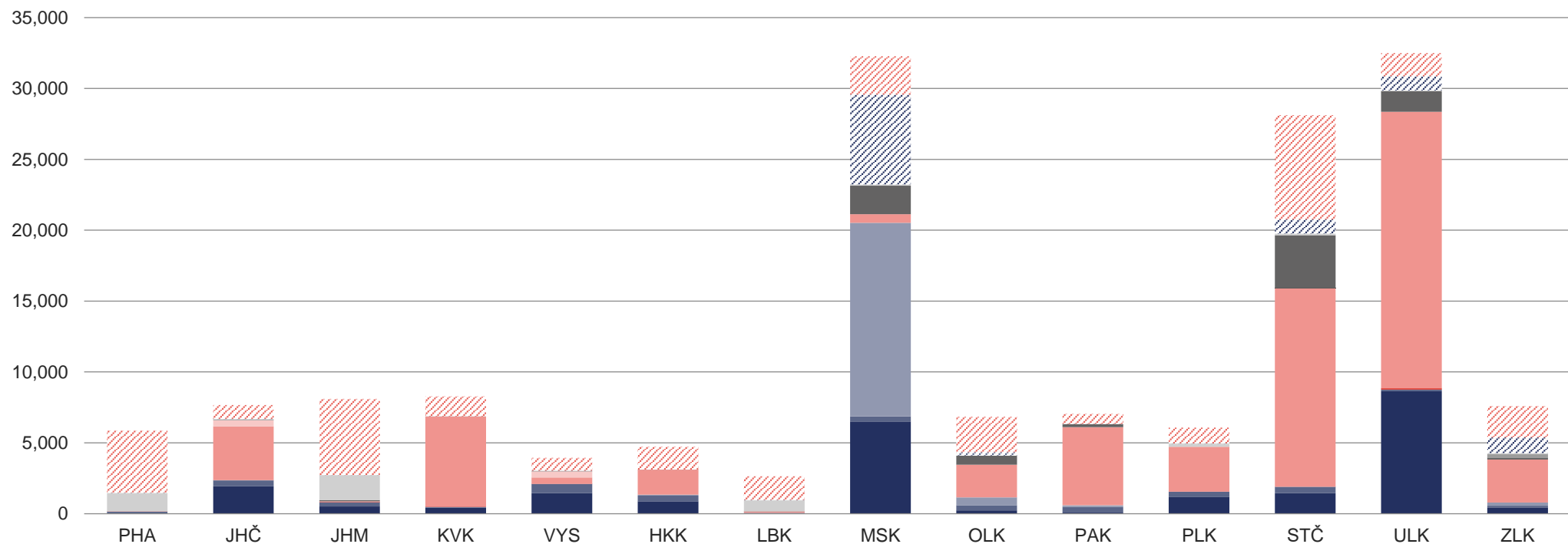




### 4.3. Gross heat production by fuel in Czech Regions [TJ]

	PHA	JHČ	JHM	KVK	VYS	HKK	LBK	MSK	OLK	PAK	PLK	STČ	ULK	ZLK	Total
<b>Gross heat production</b>	<b>5,875.0</b>	<b>7,676.4</b>	<b>8,098.2</b>	<b>8,275.0</b>	<b>3,949.4</b>	<b>4,724.6</b>	<b>2,637.6</b>	<b>32,270.6</b>	<b>6,841.2</b>	<b>7,039.7</b>	<b>6,069.4</b>	<b>28,119.1</b>	<b>32,489.2</b>	<b>7,592.1</b>	<b>161,657.4</b>
■ Biomass	0.0	1,941.6	513.9	420.0	1,445.9	880.5	23.2	6,512.7	231.9	73.3	1,171.7	1,443.6	8,642.1	438.2	23,738.3
■ Biogas	149.2	417.1	310.3	72.1	661.4	403.4	39.9	367.2	373.1	400.5	381.8	449.0	111.7	132.4	4,268.9
■ Hard coal	0.0	13.5	1.0	0.0	0.0	56.9	0.0	13,650.7	543.4	105.7	0.0	0.2	3.8	217.8	14,593.1
■ Electrical energy	2.8	0.1	3.6	0.0	0.1	0.0	0.0	1.6	0.8	23.4	5.6	0.0	0.0	0.3	38.0
■ Ambient energy (heat pump)	9.5	0.0	0.7	5.2	0.0	0.0	0.0	0.0	0.0	0.0	0.0	0.0	85.3	0.0	100.7
■ Solar energy (solar panel)	0.0	0.0	0.2	0.1	0.2	0.0	0.0	0.0	0.0	0.0	0.0	0.0	0.1	0.0	0.6
■ Brown coal	0.0	3,788.7	44.7	6,368.1	456.7	1,770.0	97.4	598.9	2,314.2	5,503.3	3,167.5	14,004.2	19,509.1	3,039.1	60,661.9
■ Nuclear fuel	0.0	437.5	0.0	0.0	425.9	0.0	0.0	0.0	0.0	0.0	0.0	0.0	0.0	0.0	863.5
■ Coke	0.0	0.0	0.0	0.0	0.0	0.0	0.0	0.0	0.0	0.0	0.0	0.1	0.0	0.0	0.1
■ Waste heat	0.0	0.0	87.9	6.5	38.7	2.7	3.1	2,018.1	637.3	235.0	0.0	3,727.0	1,456.8	130.5	8,343.6
■ Other liquid fuels	0.0	70.5	0.0	0.0	0.0	0.0	0.0	0.0	0.0	0.0	0.0	36.5	0.0	242.5	349.6
■ Other solid fuels	1,310.8	8.8	1,763.7	1.1	14.2	0.0	790.5	81.4	0.0	0.4	229.8	97.8	50.1	75.0	4,423.7
■ Other gases	0.0	1.1	0.0	0.0	0.0	0.0	0.0	6,326.2	0.0	0.0	0.7	995.1	993.8	1,104.3	9,421.2
■ Other	0.0	0.0	0.0	0.0	0.0	0.0	0.0	0.0	0.0	0.0	0.0	0.0	0.0	0.0	0.0
■ Fuel oils	4.5	25.0	4.7	0.0	3.3	3.1	30.3	5.7	242.5	1.9	4.4	21.5	14.0	3.0	363.8
■ Natural gas	4,398.3	972.6	5,367.6	1,401.9	902.9	1,607.9	1,653.2	2,708.2	2,498.1	696.3	1,107.9	7,344.0	1,622.4	2,209.0	34,490.3

### Gross heat production in Czech Regions [TJ]

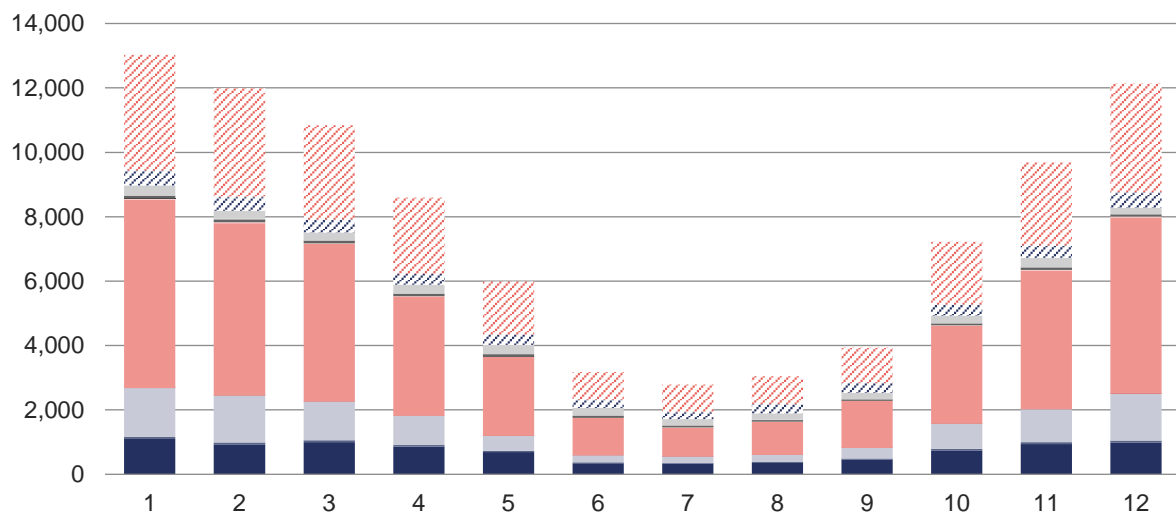


# 5 HEAT SUPPLY

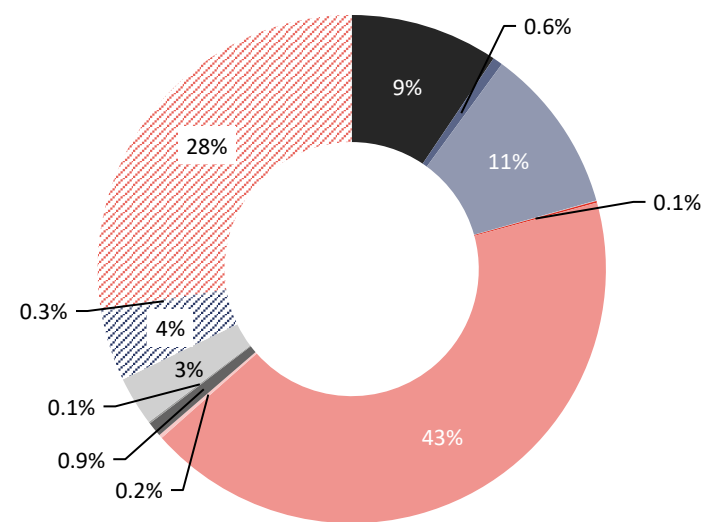
## 5.1 Heat supply by fuel [TJ]

	First quarter			Second quarter			Third quarter			Fourth quarter			Total
	January	February	March	April	May	June	July	August	September	October	November	December	
<b>Heat supply</b>	<b>35,864.9</b>			<b>17,756.2</b>			<b>9,766.4</b>			<b>29,041.9</b>			<b>92,429.4</b>
	<b>13,031.2</b>	<b>11,995.3</b>	<b>10,838.3</b>	<b>8,596.0</b>	<b>5,988.6</b>	<b>3,171.6</b>	<b>2,784.2</b>	<b>3,046.9</b>	<b>3,935.3</b>	<b>7,223.6</b>	<b>9,685.8</b>	<b>12,132.5</b>	
■ Biomass	1,098.1	930.3	994.2	857.8	687.7	341.1	328.0	354.3	460.3	734.3	942.5	987.3	8,716.0
■ Biogas	67.1	58.7	60.8	54.5	47.5	29.7	28.0	29.0	36.5	52.7	55.9	62.8	583.3
■ Hard coal	1,510.3	1,456.9	1,203.1	906.2	464.3	221.8	203.4	220.7	324.1	785.5	1,025.8	1,460.3	9,782.4
■ Electrical energy	1.9	2.2	2.4	2.9	2.5	2.7	3.9	3.5	3.5	3.2	2.4	2.5	33.5
■ Ambient energy (heat pump)	14.1	12.8	10.8	9.0	6.9	3.4	2.5	2.7	4.3	8.3	9.9	12.1	96.9
■ Solar energy (solar panel)	0.0	0.0	0.0	0.1	0.1	0.1	0.1	0.1	0.1	0.1	0.0	0.0	0.6
■ Brown coal	5,829.7	5,340.1	4,878.1	3,692.7	2,433.7	1,152.6	879.1	1,016.5	1,449.3	3,023.0	4,284.8	5,446.0	39,425.5
■ Nuclear fuel	39.6	30.6	25.0	3.7	2.9	7.7	7.0	7.1	7.2	18.2	29.2	32.9	211.0
■ Coke	0.1	0.0	0.0	0.0	0.0	0.0	0.0	0.0	0.0	0.0	0.0	0.0	0.1
■ Waste heat	93.8	83.3	86.4	85.7	86.3	69.4	64.7	53.4	43.2	65.3	74.7	67.7	874.1
■ Other liquid fuels	18.6	19.4	5.5	3.2	5.6	5.6	4.4	5.7	4.3	7.6	11.6	7.3	98.9
■ Other solid fuels	298.7	252.9	242.2	278.5	284.4	225.8	191.3	200.5	195.5	231.9	289.1	201.4	2,892.2
■ Other gases	414.8	381.7	392.9	328.6	317.7	226.0	214.1	276.9	301.4	330.7	367.5	422.4	3,974.8
■ Other	0.0	0.0	0.0	0.0	0.0	0.0	0.0	0.0	0.0	0.0	0.0	0.0	0.0
■ Fuel oils	50.2	56.0	20.8	3.6	1.8	30.6	20.0	7.1	3.6	8.7	23.4	64.0	289.9
■ Natural gas	3,594.3	3,370.3	2,916.2	2,369.5	1,647.2	855.0	837.7	869.5	1,102.0	1,954.1	2,568.8	3,365.6	25,450.3

Heat supply [TJ]



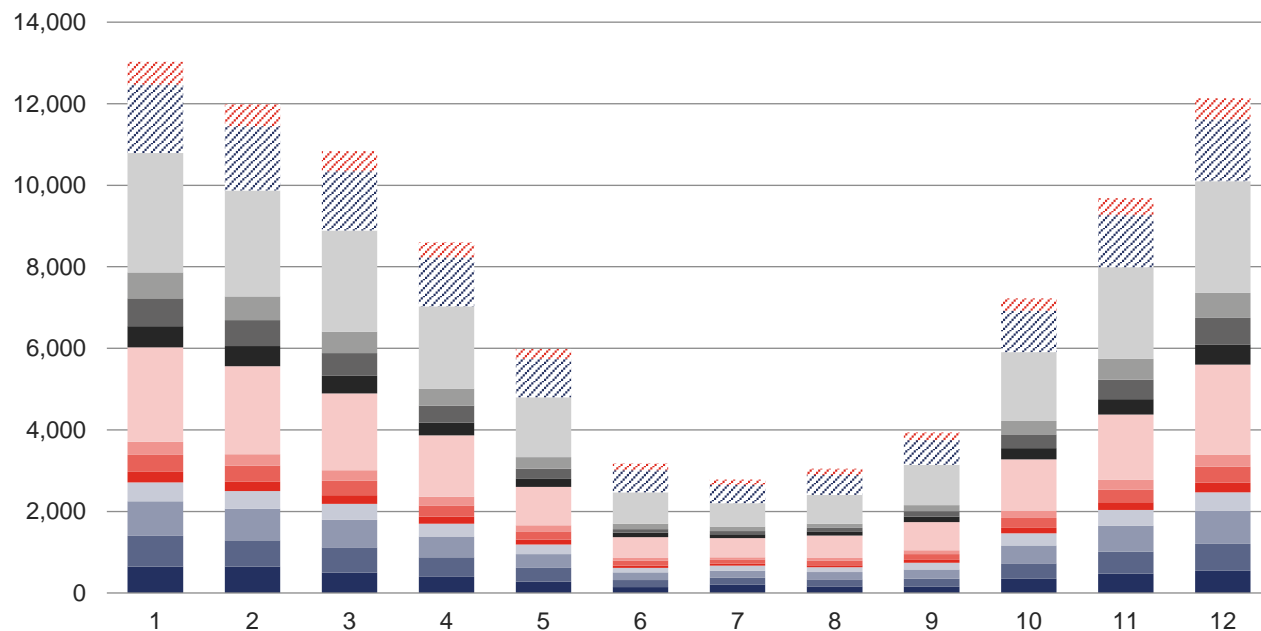
Shares of fuels in heat supply



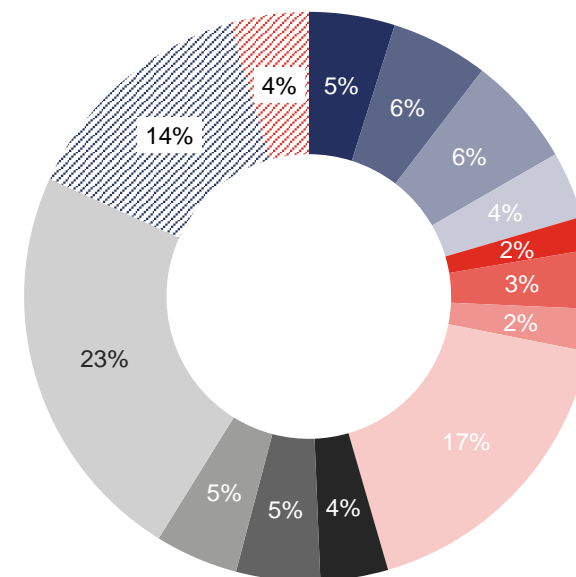
## 5.2 Heat supply in Czech Regions [TJ]

	First quarter			Second quarter			Third quarter			Fourth quarter			Total
	January	February	March	April	May	June	July	August	September	October	November	December	
<b>Heat supply</b>	<b>35,864.9</b>			<b>17,756.2</b>			<b>9,766.4</b>			<b>29,041.9</b>			<b>92,429.4</b>
	<b>13,031.2</b>	<b>11,995.3</b>	<b>10,838.3</b>	<b>8,596.0</b>	<b>5,988.6</b>	<b>3,171.6</b>	<b>2,784.2</b>	<b>3,046.9</b>	<b>3,935.3</b>	<b>7,223.6</b>	<b>9,685.8</b>	<b>12,132.5</b>	
■ Prague	647.9	649.6	501.6	398.8	274.7	145.4	208.9	158.5	156.1	351.2	476.6	544.1	4,513.4
■ Jihočeský Region	750.7	640.4	619.2	476.7	337.0	175.1	166.0	174.6	192.7	377.9	542.8	660.1	5,113.3
■ Jihomoravský Region	851.0	776.7	675.9	509.2	339.4	187.2	170.5	178.1	225.0	438.3	628.9	807.6	5,787.8
■ Karlovarský Region	464.3	435.0	385.3	315.7	241.3	110.5	123.1	121.3	168.3	295.5	387.1	456.5	3,503.6
■ Vysočina Region	256.2	226.4	212.6	167.9	110.6	51.7	46.5	48.0	67.8	132.0	191.2	236.0	1,746.8
■ Královéhradecký Region	419.8	391.8	358.7	281.7	211.1	123.4	99.3	110.0	146.6	245.8	306.8	391.4	3,086.3
■ Liberecký Region	322.8	285.0	256.0	212.1	148.5	66.9	63.4	66.6	94.4	177.7	237.5	302.4	2,233.2
■ Moravskoslezský Region	2,312.9	2,158.0	1,883.1	1,500.7	942.9	510.2	465.3	551.2	687.6	1,256.9	1,607.8	2,199.7	16,076.3
■ Olomoucký Region	519.8	496.5	430.7	317.3	196.2	106.5	99.6	105.4	133.5	278.4	372.6	497.5	3,554.1
■ Pardubický Region	682.6	632.7	563.6	418.3	251.2	89.3	78.4	82.5	130.8	339.2	484.4	652.9	4,405.9
■ Plzeňský Region	630.4	582.6	521.1	416.3	279.6	130.2	109.9	101.7	149.5	326.9	509.1	609.0	4,366.4
■ Středočeský Region	2,928.8	2,593.1	2,482.7	2,017.6	1,463.9	772.0	573.3	706.9	989.0	1,688.0	2,240.3	2,744.8	21,200.4
■ Ústecký Region	1,680.8	1,580.4	1,454.6	1,196.8	947.9	538.1	448.4	486.4	608.5	1,012.7	1,280.6	1,514.2	12,749.6
■ Zlínský Region	563.1	547.1	493.1	367.0	244.5	165.1	131.7	155.6	185.3	303.1	420.3	516.5	4,092.4

Heat supply in Czech Regions [TJ]



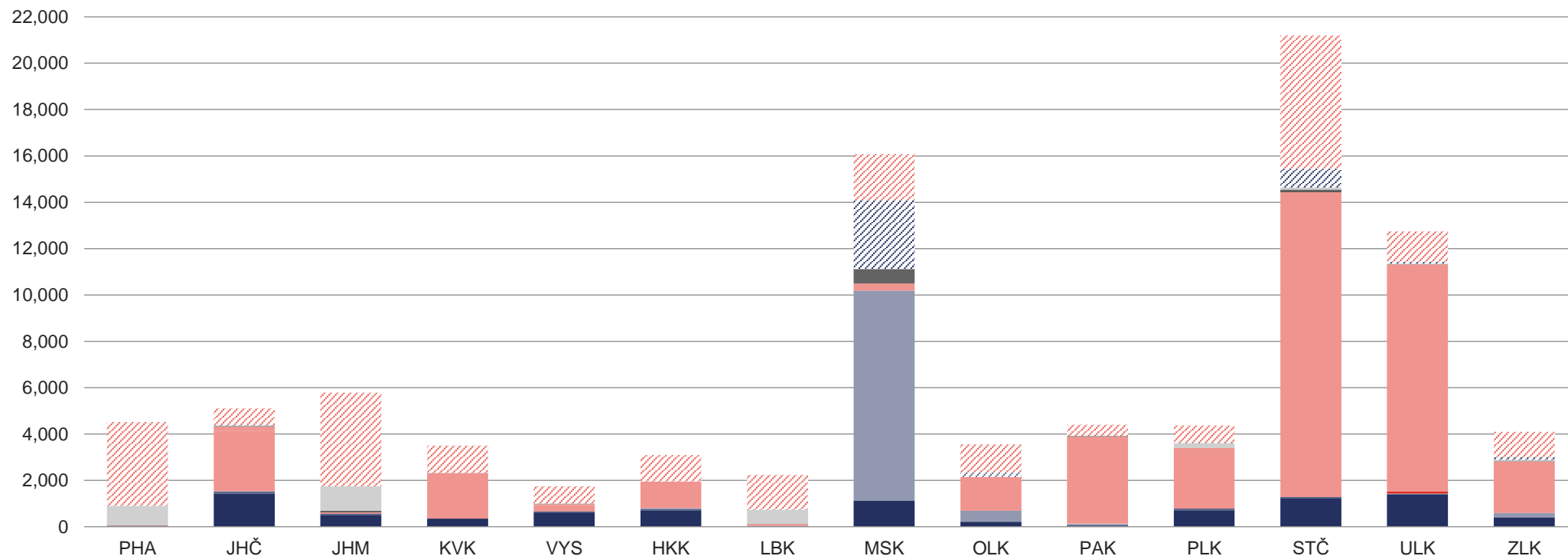
Czech Regions' share in heat supply



### 5.3 Heat supply by fuel in Czech Regions [TJ]

	PHA	JHČ	JHM	KVK	VYS	HKK	LBK	MSK	OLK	PAK	PLK	STČ	ULK	ZLK	Total
<b>Heat supply</b>	<b>4,513.4</b>	<b>5,113.3</b>	<b>5,787.8</b>	<b>3,503.6</b>	<b>1,746.8</b>	<b>3,086.3</b>	<b>2,233.2</b>	<b>16,076.3</b>	<b>3,554.1</b>	<b>4,405.9</b>	<b>4,366.4</b>	<b>21,200.4</b>	<b>12,749.6</b>	<b>4,092.4</b>	<b>92,429.4</b>
■ Biomass	0.0	1,424.0	487.6	349.0	618.6	710.3	20.1	1,123.0	192.5	43.3	714.8	1,239.8	1,393.5	399.6	8,716.0
■ Biogas	43.6	99.3	77.2	5.9	49.9	42.5	10.7	1.0	49.4	51.0	68.9	43.7	29.0	11.2	583.3
■ Hard coal	0.0	13.0	1.0	0.0	0.0	54.6	0.0	9,062.4	449.1	15.8	0.0	0.2	3.7	182.6	9,782.4
■ Electrical energy	2.5	0.1	3.6	0.0	0.1	0.0	0.0	1.3	0.8	22.3	2.7	0.0	0.0	0.3	33.5
■ Ambient energy (heat pump)	5.7	0.0	0.7	5.2	0.0	0.0	0.0	0.0	0.0	0.0	0.0	0.0	85.3	0.0	96.9
■ Solar energy (solar panel)	0.0	0.0	0.2	0.1	0.2	0.0	0.0	0.0	0.0	0.0	0.0	0.0	0.1	0.0	0.6
■ Brown coal	0.0	2,613.1	43.1	1,960.9	263.4	1,144.4	86.8	306.4	1,459.3	3,753.5	2,611.6	13,154.7	9,810.5	2,217.8	39,425.5
■ Nuclear fuel	0.0	168.7	0.0	0.0	42.2	0.0	0.0	0.0	0.0	0.0	0.0	0.0	0.0	0.0	211.0
■ Coke	0.0	0.0	0.0	0.0	0.0	0.0	0.0	0.0	0.0	0.0	0.0	0.1	0.0	0.0	0.1
■ Waste heat	0.0	0.0	75.0	0.0	22.5	0.0	3.1	624.6	0.0	33.2	0.0	98.1	5.3	12.1	874.1
■ Other liquid fuels	0.0	43.1	0.0	0.0	0.0	0.0	0.0	0.0	0.0	0.0	0.0	21.6	0.0	34.2	98.9
■ Other solid fuels	852.6	8.8	1,057.2	0.8	8.9	0.0	612.2	12.1	0.0	0.0	217.3	73.7	22.3	26.4	2,892.2
■ Other gases	0.0	0.9	0.0	0.0	0.0	0.0	0.0	2,961.5	0.0	0.0	0.6	814.4	72.6	124.9	3,974.8
■ Other	0.0	0.0	0.0	0.0	0.0	0.0	0.0	0.0	0.0	0.0	0.0	0.0	0.0	0.0	0.0
■ Fuel oils	4.5	16.0	4.2	0.0	0.9	2.2	27.5	4.0	197.7	0.0	3.8	17.6	9.8	1.7	289.9
■ Natural gas	3,604.4	726.3	4,038.2	1,181.6	740.3	1,132.3	1,472.7	1,980.0	1,205.3	486.8	746.6	5,736.5	1,317.4	1,081.7	25,450.3

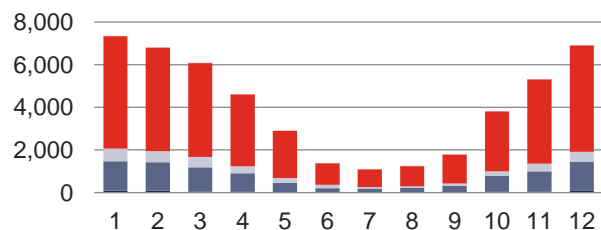
### Heat supply in Czech Regions [TJ]



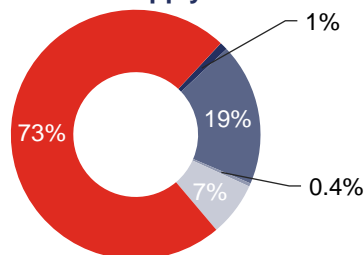
## 5.4 Supply of heat from coal, biomass and biogas [TJ]

	First quarter			Second quarter			Third quarter			Fourth quarter			Total
	January	February	March	April	May	June	July	August	September	October	November	December	
<b>Supply of heat from coal</b>	<b>7,339.9</b>	<b>6,797.0</b>	<b>6,081.2</b>	<b>4,598.9</b>	<b>2,898.0</b>	<b>1,374.4</b>	<b>1,082.5</b>	<b>1,237.2</b>	<b>1,773.4</b>	<b>3,808.5</b>	<b>5,310.7</b>	<b>6,906.2</b>	<b>49,207.8</b>
■ Sized hard coal	98.7	101.8	60.2	41.8	17.9	6.2	0.1	0.9	20.9	40.2	36.6	81.1	506.4
■ Industrial hard coal	1,371.1	1,323.3	1,103.5	860.6	446.4	204.2	192.5	219.5	303.2	741.0	951.5	1,351.2	9,067.8
■ Hard coal sludge and granulated	40.5	31.7	39.5	3.8	0.0	11.5	10.9	0.3	0.0	4.3	37.7	28.0	208.2
■ Sized brown coal	547.3	480.9	474.5	333.4	226.2	140.0	63.2	75.0	107.4	218.9	329.6	447.0	3,443.4
■ Industrial brown coal	5,281.7	4,858.6	4,403.0	3,358.9	2,207.2	1,012.4	815.7	941.3	1,341.6	2,803.7	3,954.7	4,998.3	35,977.0
■ Brown coal - briquettes	0.7	0.7	0.6	0.4	0.3	0.2	0.2	0.2	0.2	0.4	0.5	0.7	5.1
■ Brown coal - lignite	0.0	0.0	0.0	0.0	0.0	0.0	0.0	0.0	0.0	0.0	0.0	0.0	0.0
■ Brown coal - coal mud sludge	0.0	0.0	0.0	0.0	0.0	0.0	0.0	0.0	0.0	0.0	0.0	0.0	0.0
<b>Supply of heat from biomass</b>	<b>1,098.1</b>	<b>930.3</b>	<b>994.2</b>	<b>857.8</b>	<b>687.7</b>	<b>341.1</b>	<b>328.0</b>	<b>354.3</b>	<b>460.3</b>	<b>734.3</b>	<b>942.5</b>	<b>987.3</b>	<b>8,716.0</b>
■ Briquettes and pellets	118.8	113.4	116.0	99.7	66.7	18.5	14.5	14.7	29.5	69.6	83.7	72.3	817.3
■ Black liquor	82.7	78.5	80.7	60.3	71.8	59.8	68.1	65.8	62.7	48.0	70.1	77.8	826.3
■ Liquid biofuels	0.0	0.0	0.0	0.0	0.0	0.0	0.0	0.0	0.0	0.0	0.0	0.0	0.0
■ Other biomass	0.0	0.0	0.0	0.0	0.0	0.0	0.0	0.0	0.0	0.0	0.0	0.0	0.0
■ Fuel wood	0.0	0.0	0.0	0.0	0.0	0.0	0.0	0.0	0.0	0.0	0.0	1.5	1.5
■ Saw dust, bark, chips, wood waste	833.8	685.5	743.1	660.9	525.3	254.1	237.2	260.4	355.6	588.8	751.2	775.8	6,671.7
■ Straw and other vegetable materials	62.9	53.0	54.4	36.9	23.9	8.7	8.1	13.5	12.5	28.0	37.6	59.8	399.2
<b>Supply of heat from biogas</b>	<b>67.1</b>	<b>58.7</b>	<b>60.8</b>	<b>54.5</b>	<b>47.5</b>	<b>29.7</b>	<b>28.0</b>	<b>29.0</b>	<b>36.5</b>	<b>52.7</b>	<b>55.9</b>	<b>62.8</b>	<b>583.3</b>
■ Landfill gas	4.5	3.8	4.3	4.4	5.3	3.0	2.5	2.5	3.2	5.1	4.6	4.2	47.5
■ Wastewater sludge gas (WWTP)	0.4	0.4	0.4	0.5	0.5	0.5	0.4	0.3	0.4	0.4	0.4	0.4	4.9
■ Other biogas	62.2	54.4	56.0	49.6	41.7	26.2	25.1	26.2	32.9	47.2	50.9	58.2	530.9

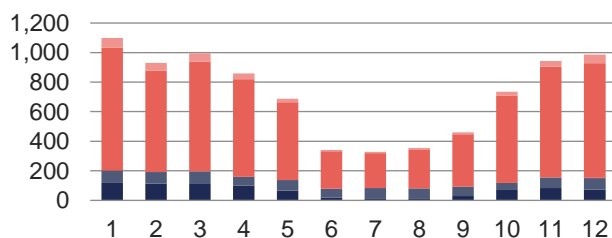
Supply of heat from coal [TJ]



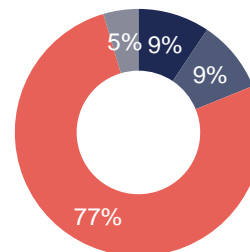
Coal categories' share in heat supply



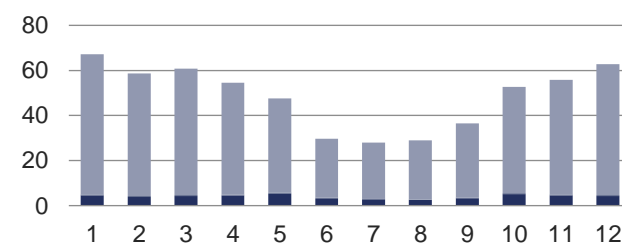
Supply of heat from biomass [TJ]



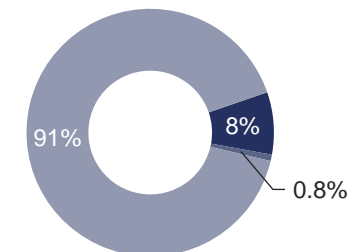
Biomass categories' share in heat supply



Supply of heat from biogas [TJ]



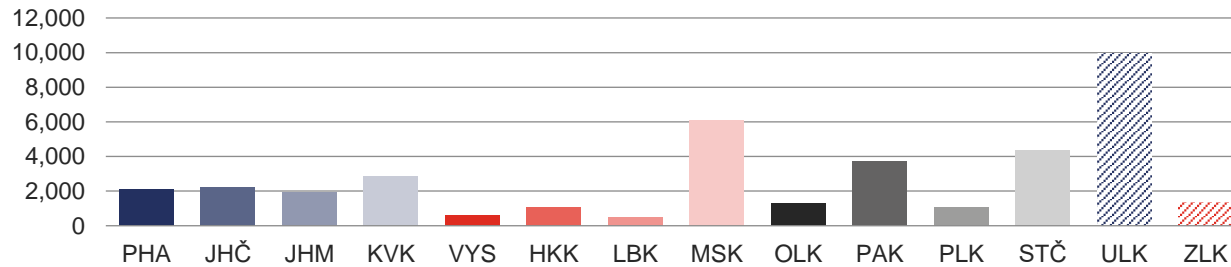
Biogas categories' share in heat supply



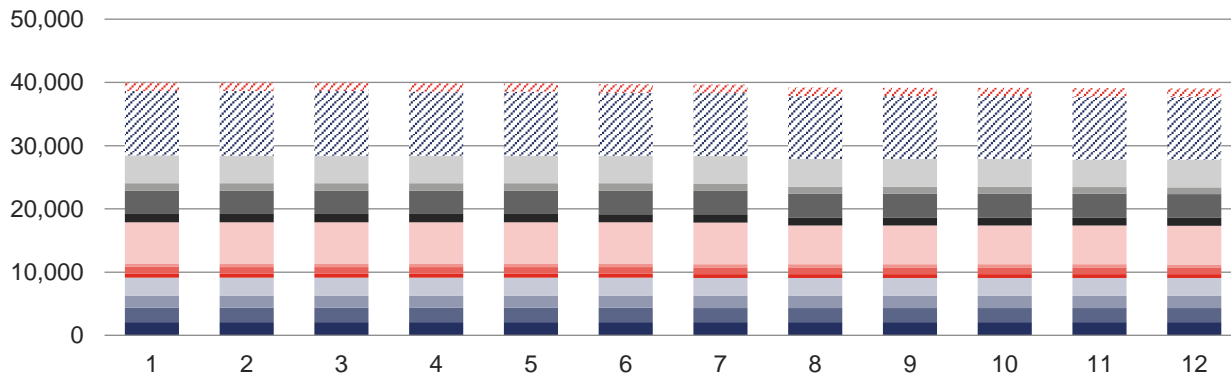
## 6 INSTALLED CAPACITY OF HEAT GENERATING IN CZECH REGIONS [MW<sub>t</sub>]

	First quarter			Second quarter			Third quarter			Fourth quarter		
	January	February	March	April	May	June	July	August	September	October	November	December
<b>Installed capacity in the CR</b>	<b>39,948.9</b>			<b>39,683.1</b>			<b>39,161.6</b>			<b>39,043.2</b>		
	<b>39,964.3</b>	<b>39,954.7</b>	<b>39,948.9</b>	<b>39,860.5</b>	<b>39,866.4</b>	<b>39,683.1</b>	<b>39,644.8</b>	<b>39,166.1</b>	<b>39,161.6</b>	<b>39,146.1</b>	<b>39,075.2</b>	<b>39,043.2</b>
■ Prague (PHA)	2,085.3	2,086.2	2,086.2	2,090.3	2,096.9	2,096.9	2,096.4	2,096.4	2,096.3	2,096.4	2,096.4	2,096.5
■ Jihočeský Region (JHČ)	2,281.2	2,281.9	2,282.7	2,282.7	2,270.0	2,269.2	2,234.5	2,235.3	2,235.3	2,234.5	2,234.5	2,201.8
■ Jihomoravský Region (JHM)	1,933.9	1,934.2	1,935.2	1,935.2	1,936.4	1,918.5	1,913.1	1,913.1	1,913.1	1,914.3	1,914.7	1,915.0
■ Karlovarský Region (KVK)	2,838.5	2,825.7	2,825.7	2,827.5	2,827.5	2,827.6	2,827.6	2,833.6	2,833.6	2,834.3	2,834.3	2,834.3
■ Vysočina Region (VYS)	607.7	607.7	607.7	607.7	607.7	607.7	607.7	607.7	607.8	608.4	608.3	608.3
■ Královéhradecký Region (HKK)	1,069.0	1,069.0	1,069.3	1,069.3	1,069.3	1,069.3	1,072.5	1,072.5	1,072.5	1,074.1	1,072.3	1,072.3
■ Liberecký Region (LBK)	487.3	487.3	487.3	487.2	487.2	487.2	488.1	488.1	488.1	488.1	488.1	488.1
■ Moravskoslezský Region (MSK)	6,594.6	6,594.6	6,585.5	6,585.5	6,595.0	6,593.8	6,595.0	6,110.9	6,111.1	6,118.6	6,118.6	6,118.5
■ Olomoucký Region (OLK)	1,292.3	1,292.3	1,292.7	1,292.7	1,292.7	1,292.7	1,294.1	1,294.1	1,294.3	1,286.7	1,286.7	1,286.7
■ Pardubický Region (PAK)	3,722.1	3,722.1	3,723.0	3,723.0	3,723.1	3,723.8	3,724.2	3,724.2	3,724.2	3,724.3	3,724.5	3,724.3
■ Plzeňský Region (PLK)	1,144.9	1,144.5	1,144.5	1,144.5	1,144.5	1,144.5	1,141.9	1,141.9	1,141.9	1,140.9	1,070.9	1,070.9
■ Středočeský Region (STČ)	4,377.9	4,379.5	4,379.5	4,377.7	4,378.8	4,378.9	4,378.9	4,377.7	4,377.7	4,359.7	4,359.8	4,360.1
■ Ústecký Region (ULK)	10,191.4	10,191.4	10,191.4	10,098.9	10,098.9	9,934.6	9,932.3	9,932.3	9,932.3	9,932.4	9,932.4	9,932.4
■ Zlínský Region (ZLK)	1,338.2	1,338.2	1,338.2	1,338.2	1,338.3	1,338.3	1,338.3	1,338.3	1,333.4	1,333.4	1,333.6	1,333.9

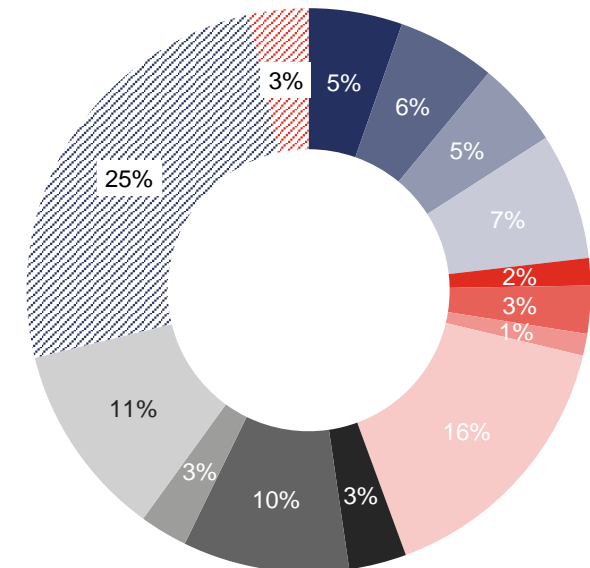
Installed capacity in Czech Regions [MW<sub>t</sub>]



Installed capacity in the CR [MW<sub>t</sub>]



Czech Regions' share of heat generating plants' installed capacity



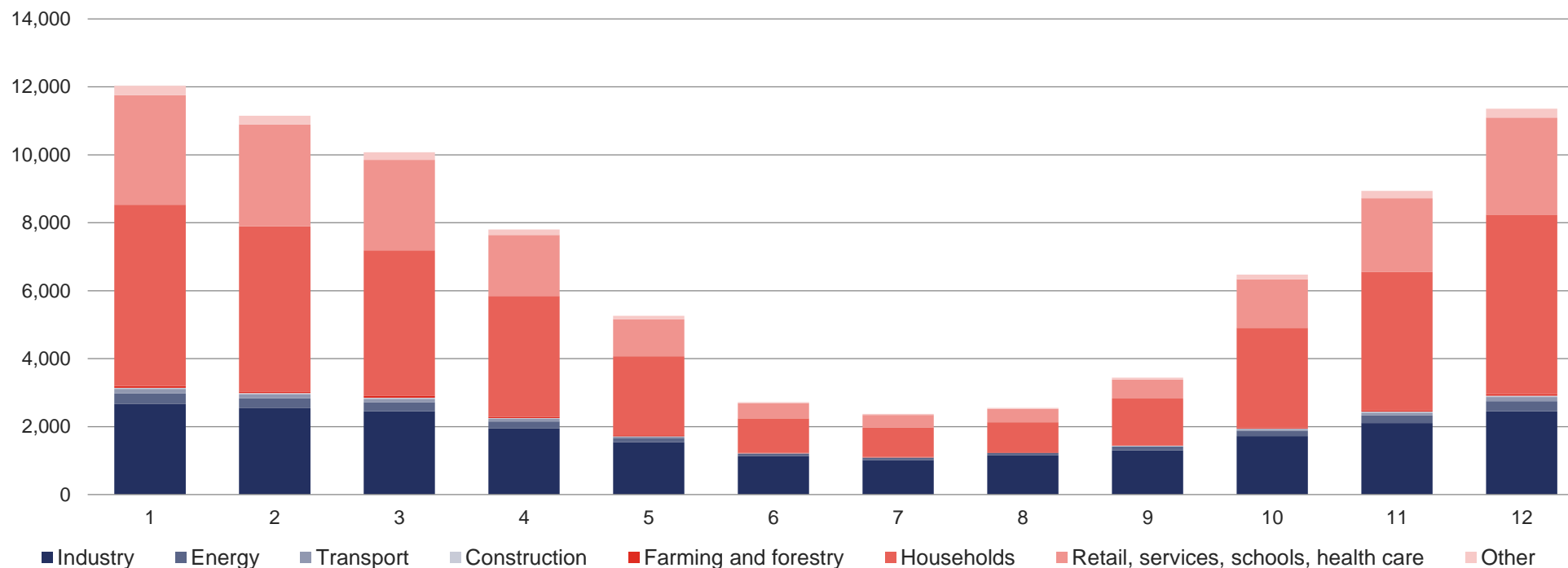
# 7 HEAT CONSUMPTION

## 7.1 Heat consumption by national economy sector [TJ]

	First quarter			Second quarter			Third quarter			Fourth quarter			Total
	January	February	March	April	May	June	July	August	September	October	November	December	
<b>Heat consumption by national economy sector *</b>	<b>33,254.5</b>			<b>15,780.3</b>			<b>8,366.7</b>			<b>26,769.8</b>			<b>84,171.3</b>
■ Industry	2,672.5	2,542.8	2,452.2	1,947.1	1,545.2	1,129.7	1,011.9	1,149.1	1,295.9	1,721.0	2,105.8	2,451.5	22,024.8
■ Energy	308.0	289.9	267.4	205.0	124.0	72.8	73.1	71.4	115.1	154.6	221.7	301.5	2,204.6
■ Transport	126.9	118.3	100.9	73.7	33.1	8.5	5.5	6.0	12.5	51.7	86.4	117.7	741.4
■ Construction	35.3	33.8	30.4	22.5	11.0	3.2	3.8	4.4	10.2	15.1	25.7	37.8	233.2
■ Farming and forestry	52.6	52.2	53.2	43.6	30.4	15.0	14.3	13.8	21.9	34.9	43.7	47.8	423.6
■ Households	5,334.1	4,855.9	4,285.5	3,549.6	2,326.0	1,011.0	858.4	883.9	1,368.7	2,930.4	4,073.9	5,280.9	36,758.4
■ Retail, services, schools, health care	3,224.2	3,002.7	2,665.2	1,796.5	1,095.1	449.0	375.2	392.0	566.0	1,425.6	2,165.2	2,855.7	20,012.3
■ Other	278.8	252.9	218.9	161.5	93.0	33.7	27.7	33.0	52.5	137.7	217.4	265.9	1,773.1

\* Does not include unidentified heat distribution.

Heat consumption by national economy sector [TJ]

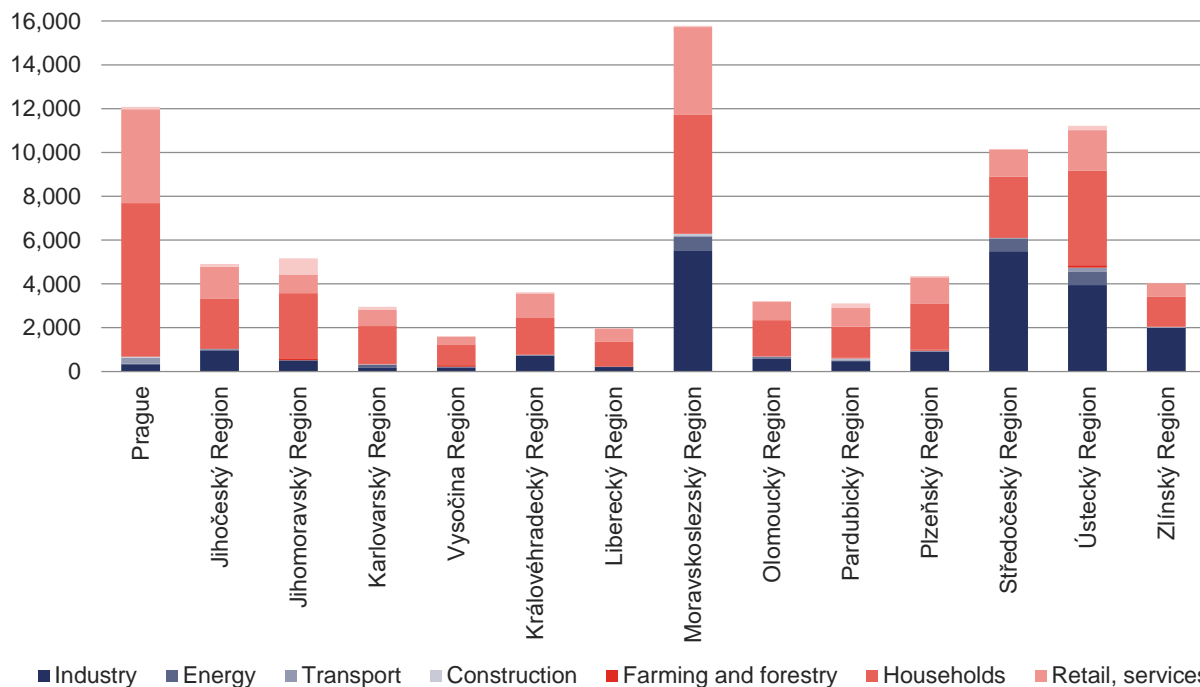


## 7.2 Heat consumption by national economy sector in Czech Regions [TJ]

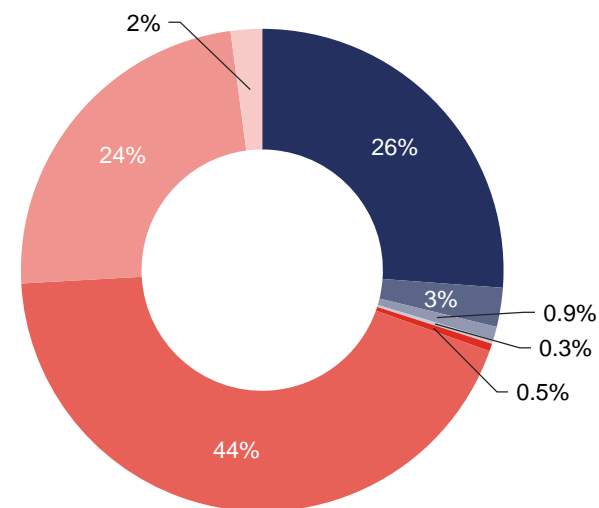
	Industry	Energy	Transport	Construction	Farming and forestry	Households	Retail, services, schools, health care	Other	Total
<b>Total CR *</b>	<b>22,024.8</b>	<b>2,204.6</b>	<b>741.4</b>	<b>233.2</b>	<b>423.6</b>	<b>36,758.4</b>	<b>20,012.3</b>	<b>1,773.1</b>	<b>84,171.3</b>
Prague	328.7	26.9	282.0	42.9	7.9	6,994.7	4,289.5	111.1	12,083.8
Jihočeský Region	944.5	40.6	53.3	5.5	23.2	2,264.5	1,454.5	129.7	4,915.9
Jihomoravský Region	511.8	5.4	0.6	0.5	51.9	3,001.4	849.9	737.6	5,159.1
Karlovarský Region	186.6	119.2	14.3	14.4	6.6	1,740.8	724.7	153.8	2,960.4
Vysočina Region	173.5	42.2	3.6	4.0	73.1	946.6	354.4	0.5	1,597.9
Královéhradecký Region	734.8	8.3	20.0	6.8	1.5	1,672.8	1,120.6	58.6	3,623.4
Liberecký Region	211.6	8.2	6.7	2.0	10.7	1,118.6	599.8	15.1	1,972.7
Moravskoslezský Region	5,528.0	630.9	54.3	71.0	0.0	5,430.2	4,001.0	60.2	15,775.7
Olomoucký Region	586.1	78.6	1.5	21.7	10.4	1,650.4	848.2	17.1	3,213.9
Pardubický Region	477.4	21.7	67.7	29.4	47.3	1,399.2	851.5	216.7	3,111.0
Plzeňský Region	916.8	3.1	32.9	5.5	45.0	2,111.5	1,180.4	59.1	4,354.3
Středočeský Region	5,492.9	582.3	27.4	1.4	19.8	2,765.3	1,243.8	19.7	10,152.6
Ústecký Region	3,941.8	631.9	157.8	10.8	114.2	4,304.7	1,860.0	190.0	11,211.2
Zlínský Region	1,990.4	5.2	19.3	17.3	12.1	1,357.5	633.7	4.0	4,039.6

\* Does not include unidentified heat distribution.

Heat consumption in Czech Regions by national economy sector [TJ]



National economy sectors' shares of heat consumption in the CR





# 8 HEAT PRODUCTION, SUPPLY AND CONSUMPTION BY CZECH REGION

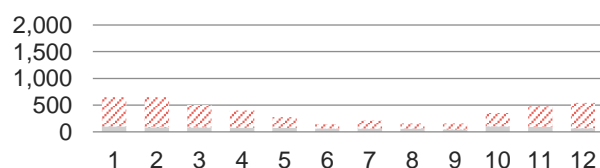
## 8.1 Heat production, supply and consumption: Prague



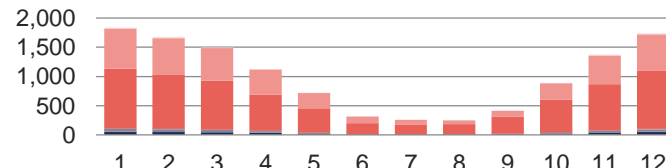
	First quarter			Second quarter			Third quarter			Fourth quarter			Total	Share in CR
	January	February	March	April	May	June	July	August	September	October	November	December		
<b>Total installed capacity [MWt]</b>	<b>2,085.3</b>	<b>2,086.2</b>	<b>2,086.2</b>	<b>2,090.3</b>	<b>2,096.9</b>	<b>2,096.9</b>	<b>2,096.4</b>	<b>2,096.4</b>	<b>2,096.3</b>	<b>2,096.4</b>	<b>2,096.4</b>	<b>2,096.5</b>	<b>2,096.5</b>	<b>5.4%</b>
<b>Gross heat production [TJ]</b>	<b>799.4</b>	<b>789.8</b>	<b>631.9</b>	<b>508.1</b>	<b>362.7</b>	<b>214.2</b>	<b>275.8</b>	<b>225.8</b>	<b>245.9</b>	<b>473.3</b>	<b>659.4</b>	<b>688.8</b>	<b>5,875.0</b>	<b>3.6%</b>
<b>Heat supply by fuel [TJ]</b>	<b>647.9</b>	<b>649.6</b>	<b>501.6</b>	<b>398.8</b>	<b>274.7</b>	<b>145.4</b>	<b>208.9</b>	<b>158.5</b>	<b>156.1</b>	<b>351.2</b>	<b>476.6</b>	<b>544.1</b>	<b>4,513.4</b>	<b>4.9%</b>
■ Biomass	0.0	0.0	0.0	0.0	0.0	0.0	0.0	0.0	0.0	0.0	0.0	0.0	0.0	0.0%
■ Biogas	4.2	3.6	4.3	3.9	4.3	2.7	2.5	2.4	2.8	4.5	4.1	4.2	43.6	7.5%
■ Hard coal	0.0	0.0	0.0	0.0	0.0	0.0	0.0	0.0	0.0	0.0	0.0	0.0	0.0	0.0%
■ Electrical energy	0.0	0.0	0.0	0.0	0.0	0.2	1.0	0.8	0.4	0.0	0.0	0.0	2.5	7.6%
■ Ambient energy (heat pump)	0.3	0.2	0.0	0.3	0.9	1.0	0.2	0.2	0.9	1.0	0.5	0.3	5.7	5.9%
■ Solar energy (solar panel)	0.0	0.0	0.0	0.0	0.0	0.0	0.0	0.0	0.0	0.0	0.0	0.0	0.0	0.0%
■ Brown coal	0.0	0.0	0.0	0.0	0.0	0.0	0.0	0.0	0.0	0.0	0.0	0.0	0.0	0.0%
■ Nuclear fuel	0.0	0.0	0.0	0.0	0.0	0.0	0.0	0.0	0.0	0.0	0.0	0.0	0.0	0.0%
■ Coke	0.0	0.0	0.0	0.0	0.0	0.0	0.0	0.0	0.0	0.0	0.0	0.0	0.0	0.0%
■ Waste heat	0.0	0.0	0.0	0.0	0.0	0.0	0.0	0.0	0.0	0.0	0.0	0.0	0.0	0.0%
■ Other liquid fuels	0.0	0.0	0.0	0.0	0.0	0.0	0.0	0.0	0.0	0.0	0.0	0.0	0.0	0.0%
■ Other solid fuels	99.6	84.4	78.3	73.3	65.5	56.8	55.8	56.6	38.7	95.4	86.1	62.1	852.6	29.5%
■ Other gases	0.0	0.0	0.0	0.0	0.0	0.0	0.0	0.0	0.0	0.0	0.0	0.0	0.0	0.0%
■ Other	0.0	0.0	0.0	0.0	0.0	0.0	0.0	0.0	0.0	0.0	0.0	0.0	0.0	0.0%
■ Fuel oils	0.3	0.2	0.2	0.2	0.1	0.1	2.1	0.6	0.1	0.2	0.2	0.2	4.5	1.6%
■ Natural gas	543.5	561.2	418.8	321.1	203.8	84.5	147.2	98.0	113.2	250.2	385.7	477.2	3,604.4	14.2%
<b>Heat supply from Středočeský Region</b>	<b>1,486.5</b>	<b>1,275.4</b>	<b>1,225.4</b>	<b>969.2</b>	<b>667.7</b>	<b>264.8</b>	<b>123.4</b>	<b>208.7</b>	<b>346.0</b>	<b>767.4</b>	<b>1,103.5</b>	<b>1,371.2</b>	<b>9,809.1</b>	
<b>Heat consumption by economic sector*</b>	<b>1,832.9</b>	<b>1,669.1</b>	<b>1,498.5</b>	<b>1,125.8</b>	<b>722.0</b>	<b>317.9</b>	<b>254.8</b>	<b>250.5</b>	<b>414.1</b>	<b>891.6</b>	<b>1,369.6</b>	<b>1,736.9</b>	<b>12,083.8</b>	<b>14.4%</b>
■ Industry	48.8	46.3	44.1	33.7	18.6	7.5	6.4	7.2	10.1	22.6	36.5	47.0	328.7	1.5%
■ Energy	4.2	3.8	3.5	2.4	1.8	0.8	0.4	0.3	0.4	1.8	3.3	4.2	26.9	1.2%
■ Transport	49.5	44.6	38.3	28.8	13.8	3.7	2.2	2.4	5.5	17.8	32.3	43.1	282.0	38.0%
■ Construction	6.5	6.0	6.1	3.9	2.4	1.0	0.4	0.4	5.6	1.8	3.7	5.2	42.9	18.4%
■ Farming and forestry	1.0	0.8	0.8	0.6	2.5	0.2	0.1	0.1	0.1	0.3	0.7	0.9	7.9	1.9%
■ Households	1,023.0	936.7	836.3	620.2	415.2	189.6	169.2	171.1	289.4	559.2	791.3	993.6	6,994.7	19.0%
■ Retail, services, schools, health care	681.6	616.0	555.6	425.1	261.0	113.1	74.5	67.3	100.4	280.7	488.5	625.7	4,289.5	21.4%
■ Other	18.3	15.0	13.7	11.1	6.7	2.1	1.7	1.8	2.6	7.5	13.3	17.2	111.1	6.3%

\* The difference between supply and consumption includes losses of bought heat and a part of unidentified heat distribution.

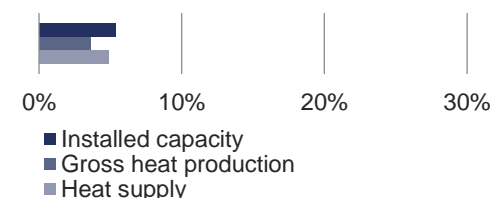
Heat supply by fuel [TJ]



Heat consumption by national economy sector [TJ]



Share in CR



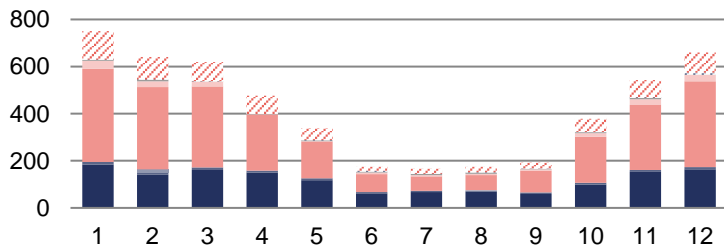
## 8.2 Heat production, supply and consumption: Jihočeský Region



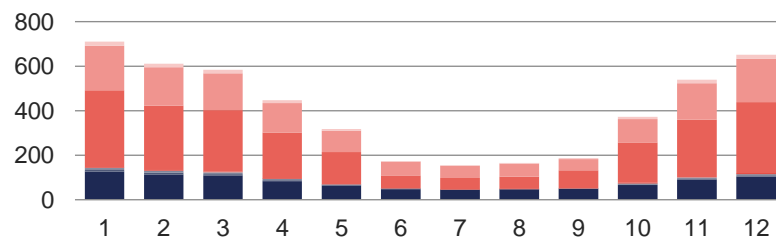
	First quarter			Second quarter			Third quarter			Fourth quarter			Total	Share in CR
	January	February	March	April	May	June	July	August	September	October	November	December		
<b>Total installed capacity [MWt]</b>	<b>2,281.2</b>	<b>2,281.9</b>	<b>2,282.7</b>	<b>2,282.7</b>	<b>2,270.0</b>	<b>2,269.2</b>	<b>2,234.5</b>	<b>2,235.3</b>	<b>2,235.3</b>	<b>2,234.5</b>	<b>2,234.5</b>	<b>2,201.8</b>	<b>2,201.8</b>	<b>5.6%</b>
<b>Gross heat production [TJ]</b>	<b>1,019.1</b>	<b>877.0</b>	<b>869.7</b>	<b>676.0</b>	<b>540.0</b>	<b>336.6</b>	<b>317.0</b>	<b>336.4</b>	<b>375.3</b>	<b>595.7</b>	<b>797.6</b>	<b>936.1</b>	<b>7,676.4</b>	<b>4.7%</b>
<b>Heat supply by fuel [TJ]</b>	<b>750.7</b>	<b>640.4</b>	<b>619.2</b>	<b>476.7</b>	<b>337.0</b>	<b>175.1</b>	<b>166.0</b>	<b>174.6</b>	<b>192.7</b>	<b>377.9</b>	<b>542.8</b>	<b>660.1</b>	<b>5,113.3</b>	<b>5.5%</b>
■ Biomass	183.9	141.0	161.3	149.5	118.0	62.1	66.6	68.6	58.9	98.2	152.4	163.6	1,424.0	16.3%
■ Biogas	11.0	9.5	10.6	9.2	8.0	4.9	6.0	6.1	6.7	8.8	8.6	9.7	99.3	17.0%
■ Hard coal	0.0	13.0	0.0	0.0	0.0	0.0	0.0	0.0	0.0	0.0	0.0	0.0	13.0	0.1%
■ Electrical energy	0.0	0.0	0.0	0.0	0.0	0.0	0.0	0.0	0.0	0.0	0.0	0.0	0.1	0.2%
■ Ambient energy (heat pump)	0.0	0.0	0.0	0.0	0.0	0.0	0.0	0.0	0.0	0.0	0.0	0.0	0.0	0.0%
■ Solar energy (solar panel)	0.0	0.0	0.0	0.0	0.0	0.0	0.0	0.0	0.0	0.0	0.0	0.0	0.0	0.0%
■ Brown coal	396.0	348.8	344.0	238.9	156.0	76.4	61.5	64.5	92.0	195.1	275.7	364.0	2,613.1	6.6%
■ Nuclear fuel	33.4	25.2	19.9	0.0	1.0	6.3	5.6	5.7	5.5	14.8	24.2	27.2	168.7	80.0%
■ Coke	0.0	0.0	0.0	0.0	0.0	0.0	0.0	0.0	0.0	0.0	0.0	0.0	0.0	0.0%
■ Waste heat	0.0	0.0	0.0	0.0	0.0	0.0	0.0	0.0	0.0	0.0	0.0	0.0	0.0	0.0%
■ Other liquid fuels	4.7	6.2	0.1	0.0	4.3	4.3	4.4	5.1	2.4	4.7	5.7	1.3	43.1	43.6%
■ Other solid fuels	1.0	1.0	0.7	0.7	0.6	0.6	0.7	0.9	0.8	0.5	0.7	0.6	8.8	0.3%
■ Other gases	0.1	0.1	0.1	0.1	0.1	0.0	0.0	0.0	0.0	0.1	0.1	0.1	0.9	0.0%
■ Other	0.0	0.0	0.0	0.0	0.0	0.0	0.0	0.0	0.0	0.0	0.0	0.0	0.0	0.0%
■ Fuel oils	0.1	0.8	0.3	0.2	0.1	3.1	0.1	0.3	0.8	0.2	2.0	8.2	16.0	5.5%
■ Natural gas	120.4	94.9	82.2	78.1	48.9	17.5	21.1	23.4	25.5	55.6	73.4	85.4	726.3	2.9%
<b>Heat consumption by economic sector*</b>	<b>710.5</b>	<b>611.4</b>	<b>583.5</b>	<b>446.7</b>	<b>318.1</b>	<b>174.5</b>	<b>155.8</b>	<b>165.8</b>	<b>186.3</b>	<b>372.9</b>	<b>539.0</b>	<b>651.4</b>	<b>4,915.9</b>	<b>5.8%</b>
■ Industry	126.1	114.2	109.8	83.3	63.9	47.9	44.0	47.5	48.3	66.0	90.9	102.8	944.5	4.3%
■ Energy	6.9	7.4	5.3	4.7	3.1	2.1	0.3	0.3	1.4	3.7	2.3	3.1	40.6	1.8%
■ Transport	9.8	8.4	7.5	5.5	1.5	0.5	0.1	0.2	0.6	3.8	6.5	8.9	53.3	7.2%
■ Construction	0.8	0.7	0.7	0.5	0.3	0.2	0.1	0.1	0.2	0.5	0.6	0.8	5.5	2.4%
■ Farming and forestry	3.4	2.8	2.9	2.3	2.0	0.9	0.8	0.6	0.9	1.8	2.1	2.9	23.2	5.5%
■ Households	345.3	289.7	276.8	205.7	142.9	58.1	52.0	54.5	81.5	181.6	256.8	319.6	2,264.5	6.2%
■ Retail, services, schools, health care	199.0	172.1	164.9	132.7	96.8	61.2	55.5	59.4	49.5	105.1	164.4	193.9	1,454.5	7.3%
■ Other	19.2	16.2	15.5	12.0	7.6	3.6	3.0	3.2	4.2	10.6	15.4	19.3	129.7	7.3%

\* The difference between supply and consumption includes losses of bought heat and a part of unidentified heat distribution.

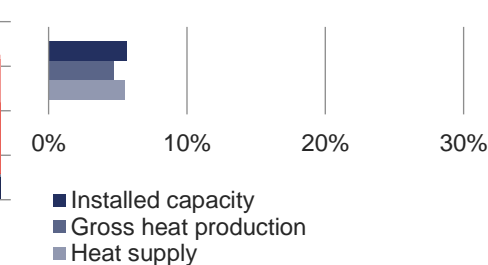
### Heat supply by fuel [TJ]



### Heat consumption by national economy sector [TJ]



### Share in CR



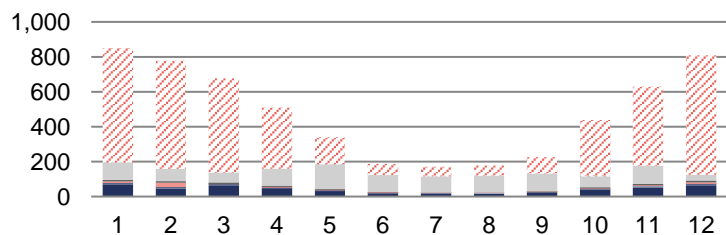
## 8.3 Heat production, supply and consumption: Jihomoravský Region



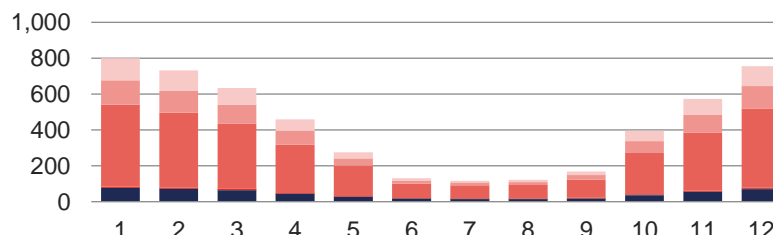
	First quarter			Second quarter			Third quarter			Fourth quarter			Total	Share in CR
	January	February	March	April	May	June	July	August	September	October	November	December		
<b>Total installed capacity [MWt]</b>	<b>1,933.9</b>	<b>1,934.2</b>	<b>1,935.2</b>	<b>1,935.2</b>	<b>1,936.4</b>	<b>1,918.5</b>	<b>1,913.1</b>	<b>1,913.1</b>	<b>1,913.1</b>	<b>1,914.3</b>	<b>1,914.7</b>	<b>1,915.0</b>	<b>1,915.0</b>	<b>4.9%</b>
<b>Gross heat production [TJ]</b>	<b>1,099.4</b>	<b>1,004.3</b>	<b>900.2</b>	<b>701.1</b>	<b>487.1</b>	<b>290.2</b>	<b>266.3</b>	<b>278.3</b>	<b>333.6</b>	<b>692.3</b>	<b>920.3</b>	<b>1,125.1</b>	<b>8,098.2</b>	<b>5.0%</b>
<b>Heat supply by fuel [TJ]</b>	<b>851.0</b>	<b>776.7</b>	<b>675.9</b>	<b>509.2</b>	<b>339.4</b>	<b>187.2</b>	<b>170.5</b>	<b>178.1</b>	<b>225.0</b>	<b>438.3</b>	<b>628.9</b>	<b>807.6</b>	<b>5,787.8</b>	<b>6.3%</b>
■ Biomass	70.0	47.0	64.0	47.5	31.1	19.1	16.9	14.9	20.7	39.2	52.2	65.0	487.6	5.6%
■ Biogas	9.3	7.9	7.5	6.4	5.9	3.6	3.6	4.5	5.1	6.9	7.5	8.8	77.2	13.2%
■ Hard coal	0.0	0.9	0.0	0.0	0.0	0.0	0.0	0.0	0.0	0.0	0.0	0.0	1.0	0.0%
■ Electrical energy	0.0	0.0	0.1	0.2	0.2	0.5	0.4	0.5	0.4	0.4	0.4	0.4	3.6	10.6%
■ Ambient energy (heat pump)	0.1	0.1	0.1	0.1	0.0	0.0	0.0	0.0	0.0	0.1	0.1	0.1	0.7	0.7%
■ Solar energy (solar panel)	0.0	0.0	0.0	0.0	0.0	0.0	0.0	0.0	0.0	0.0	0.0	0.0	0.2	31.1%
■ Brown coal	6.4	23.4	0.3	0.3	0.2	0.2	0.2	0.2	0.2	0.2	4.9	6.7	43.1	0.1%
■ Nuclear fuel	0.0	0.0	0.0	0.0	0.0	0.0	0.0	0.0	0.0	0.0	0.0	0.0	0.0	0.0%
■ Coke	0.0	0.0	0.0	0.0	0.0	0.0	0.0	0.0	0.0	0.0	0.0	0.0	0.0	0.0%
■ Waste heat	9.9	8.7	8.7	8.0	5.7	1.8	1.7	1.9	2.7	6.8	8.7	10.3	75.0	8.6%
■ Other liquid fuels	0.0	0.0	0.0	0.0	0.0	0.0	0.0	0.0	0.0	0.0	0.0	0.0	0.0	0.0%
■ Other solid fuels	98.3	71.5	57.7	98.1	142.5	98.4	92.5	96.9	103.7	62.6	102.3	32.8	1,057.2	36.6%
■ Other gases	0.0	0.0	0.0	0.0	0.0	0.0	0.0	0.0	0.0	0.0	0.0	0.0	0.0	0.0%
■ Other	0.0	0.0	0.0	0.0	0.0	0.0	0.0	0.0	0.0	0.0	0.0	0.0	0.0	0.0%
■ Fuel oils	0.0	0.0	0.0	0.0	0.0	0.0	0.3	3.2	0.0	0.7	0.0	0.0	4.2	1.5%
■ Natural gas	656.9	617.1	537.3	348.7	153.6	63.6	54.9	56.2	92.1	321.3	452.8	683.5	4,038.2	15.9%
<b>Heat consumption by economic sector*</b>	<b>800.5</b>	<b>732.3</b>	<b>634.7</b>	<b>459.1</b>	<b>274.5</b>	<b>130.1</b>	<b>115.8</b>	<b>120.8</b>	<b>167.5</b>	<b>394.3</b>	<b>573.9</b>	<b>755.5</b>	<b>5,159.1</b>	<b>6.1%</b>
■ Industry	76.5	71.6	64.5	44.4	26.6	17.5	14.8	14.5	18.6	36.8	55.5	70.5	511.8	2.3%
■ Energy	0.7	0.6	0.6	0.4	0.3	0.2	0.1	0.2	0.2	0.3	0.5	1.4	5.4	0.2%
■ Transport	0.1	0.1	0.1	0.1	0.1	0.0	0.0	0.0	0.0	0.0	0.1	0.1	0.6	0.1%
■ Construction	0.1	0.1	0.1	0.0	0.0	0.0	0.0	0.0	0.0	0.0	0.0	0.1	0.5	0.2%
■ Farming and forestry	6.7	6.3	6.0	4.3	3.5	2.2	2.5	1.5	2.2	4.3	5.7	6.5	51.9	12.2%
■ Households	456.2	417.5	363.3	269.0	169.3	81.2	74.0	76.8	102.1	229.6	321.9	440.5	3,001.4	8.2%
■ Retail, services, schools, health care	136.5	123.8	106.0	75.9	41.1	17.9	15.4	17.1	24.5	67.1	99.8	124.8	849.9	4.2%
■ Other	123.6	112.3	94.2	65.0	33.7	11.1	9.0	10.8	19.8	56.2	90.3	111.6	737.6	41.6%

\* The difference between supply and consumption includes losses of bought heat and a part of unidentified heat distribution.

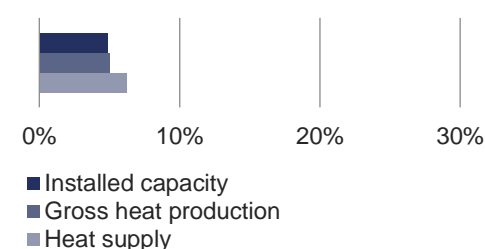
### Heat supply by fuel [TJ]



### Heat consumption by national economy sector [TJ]



### Share in CR



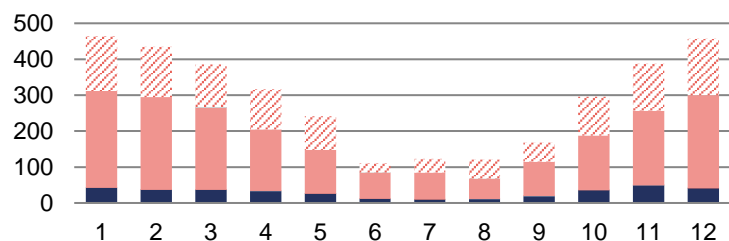
## 8.4 Heat production, supply and consumption: Karlovarský Region



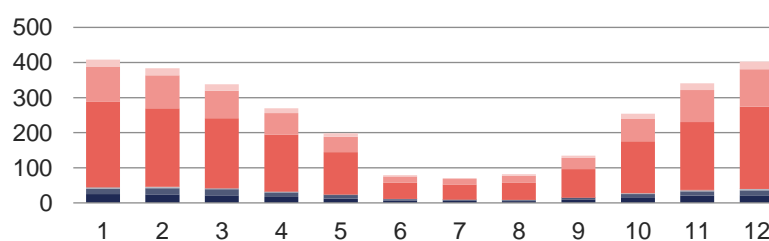
	First quarter			Second quarter			Third quarter			Fourth quarter			Total	Share in CR
	January	February	March	April	May	June	July	August	September	October	November	December		
<b>Total installed capacity [MWt]</b>	<b>2,838.5</b>	<b>2,825.7</b>	<b>2,825.7</b>	<b>2,827.5</b>	<b>2,827.5</b>	<b>2,827.6</b>	<b>2,827.6</b>	<b>2,833.6</b>	<b>2,833.6</b>	<b>2,834.3</b>	<b>2,834.3</b>	<b>2,834.3</b>	<b>2,834.3</b>	<b>7.3%</b>
<b>Gross heat production [TJ]</b>	<b>941.0</b>	<b>890.9</b>	<b>853.2</b>	<b>720.7</b>	<b>605.1</b>	<b>419.8</b>	<b>417.3</b>	<b>447.1</b>	<b>515.5</b>	<b>699.8</b>	<b>830.3</b>	<b>934.2</b>	<b>8,275.0</b>	<b>5.1%</b>
<b>Heat supply by fuel [TJ]</b>	<b>464.3</b>	<b>435.0</b>	<b>385.3</b>	<b>315.7</b>	<b>241.3</b>	<b>110.5</b>	<b>123.1</b>	<b>121.3</b>	<b>168.3</b>	<b>295.5</b>	<b>387.1</b>	<b>456.5</b>	<b>3,503.6</b>	<b>3.8%</b>
■ Biomass	41.8	36.3	36.0	33.3	26.1	11.6	9.8	10.8	18.7	35.3	48.9	40.4	349.0	4.0%
■ Biogas	0.9	0.7	0.8	0.6	0.3	0.2	0.1	0.2	0.5	0.4	0.6	0.7	5.9	1.0%
■ Hard coal	0.0	0.0	0.0	0.0	0.0	0.0	0.0	0.0	0.0	0.0	0.0	0.0	0.0	0.0%
■ Electrical energy	0.0	0.0	0.0	0.0	0.0	0.0	0.0	0.0	0.0	0.0	0.0	0.0	0.0	0.0%
■ Ambient energy (heat pump)	0.7	0.5	0.5	0.5	0.5	0.3	0.4	0.4	0.5	0.4	0.3	0.3	5.2	5.3%
■ Solar energy (solar panel)	0.0	0.0	0.0	0.0	0.0	0.0	0.0	0.0	0.0	0.0	0.0	0.0	0.1	25.1%
■ Brown coal	268.5	257.3	229.0	170.6	120.6	72.2	74.0	56.4	94.8	151.9	206.7	259.1	1,960.9	5.0%
■ Nuclear fuel	0.0	0.0	0.0	0.0	0.0	0.0	0.0	0.0	0.0	0.0	0.0	0.0	0.0	0.0%
■ Coke	0.0	0.0	0.0	0.0	0.0	0.0	0.0	0.0	0.0	0.0	0.0	0.0	0.0	0.0%
■ Waste heat	0.0	0.0	0.0	0.0	0.0	0.0	0.0	0.0	0.0	0.0	0.0	0.0	0.0	0.0%
■ Other liquid fuels	0.0	0.0	0.0	0.0	0.0	0.0	0.0	0.0	0.0	0.0	0.0	0.0	0.0	0.0%
■ Other solid fuels	0.0	0.0	0.8	0.0	0.0	0.0	0.0	0.0	0.0	0.0	0.0	0.0	0.8	0.0%
■ Other gases	0.0	0.0	0.0	0.0	0.0	0.0	0.0	0.0	0.0	0.0	0.0	0.0	0.0	0.0%
■ Other	0.0	0.0	0.0	0.0	0.0	0.0	0.0	0.0	0.0	0.0	0.0	0.0	0.0	0.0%
■ Fuel oils	0.0	0.0	0.0	0.0	0.0	0.0	0.0	0.0	0.0	0.0	0.0	0.0	0.0	0.0%
■ Natural gas	152.4	140.1	118.2	110.8	93.8	26.1	38.8	53.5	53.8	107.6	130.5	156.0	1,181.6	4.6%
<b>Heat consumption by economic sector*</b>	<b>408.6</b>	<b>383.8</b>	<b>337.5</b>	<b>269.7</b>	<b>198.6</b>	<b>78.8</b>	<b>70.9</b>	<b>81.3</b>	<b>134.2</b>	<b>254.0</b>	<b>340.4</b>	<b>402.6</b>	<b>2,960.4</b>	<b>3.5%</b>
■ Industry	24.8	24.5	21.8	17.4	12.8	7.0	6.2	5.0	8.4	16.0	21.0	21.7	186.6	0.8%
■ Energy	15.3	17.2	17.1	12.3	9.2	3.8	2.4	2.7	5.5	8.8	11.4	13.5	119.2	5.4%
■ Transport	1.9	1.8	1.4	1.1	0.8	0.3	0.3	0.4	0.7	1.4	1.9	2.2	14.3	1.9%
■ Construction	2.1	2.1	1.7	1.4	0.9	0.2	0.2	0.3	0.5	1.3	1.8	2.0	14.4	6.2%
■ Farming and forestry	1.0	0.8	0.8	0.6	0.3	0.2	0.1	0.2	0.5	0.4	0.7	0.8	6.6	1.6%
■ Households	243.1	223.1	198.8	162.2	120.1	46.2	43.0	48.8	80.6	147.5	193.7	233.6	1,740.8	4.7%
■ Retail, services, schools, health care	98.8	93.8	78.4	60.7	44.6	17.7	15.6	20.0	31.9	65.0	91.4	106.9	724.7	3.6%
■ Other	21.6	20.5	17.5	13.9	9.8	3.4	3.0	3.9	6.1	13.6	18.4	21.9	153.8	8.7%

\* The difference between supply and consumption includes losses of bought heat and a part of unidentified heat distribution.

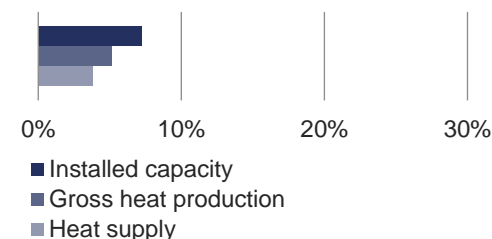
### Heat supply by fuel [TJ]



### Heat consumption by national economy sector [TJ]



### Share in CR



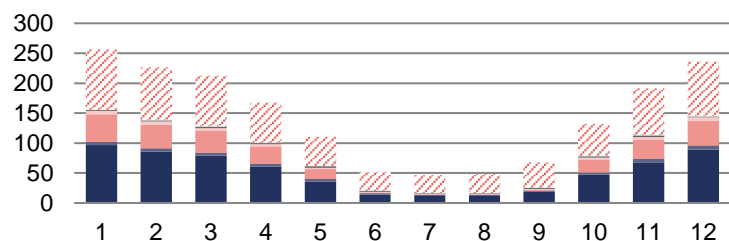
## 8.5 Heat production, supply and consumption: Vysočina Region



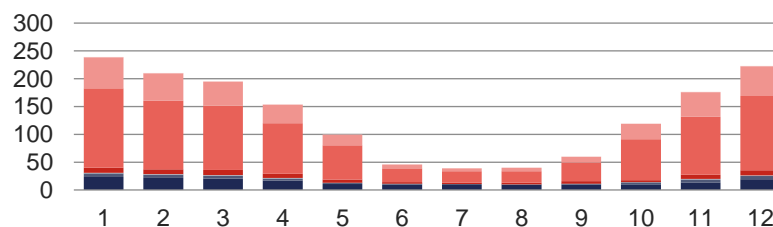
	First quarter			Second quarter			Third quarter			Fourth quarter			Total	Share in CR
	January	February	March	April	May	June	July	August	September	October	November	December		
<b>Total installed capacity [MWt]</b>	<b>607.7</b>	<b>607.7</b>	<b>607.7</b>	<b>607.7</b>	<b>607.7</b>	<b>607.7</b>	<b>607.7</b>	<b>607.7</b>	<b>607.8</b>	<b>608.4</b>	<b>608.3</b>	<b>608.3</b>	<b>608.3</b>	<b>1.6%</b>
<b>Gross heat production [TJ]</b>	<b>513.7</b>	<b>455.0</b>	<b>433.5</b>	<b>367.9</b>	<b>287.8</b>	<b>192.9</b>	<b>177.4</b>	<b>185.1</b>	<b>171.8</b>	<b>308.7</b>	<b>388.6</b>	<b>466.9</b>	<b>3,949.4</b>	<b>2.4%</b>
<b>Heat supply by fuel [TJ]</b>	<b>256.2</b>	<b>226.4</b>	<b>212.6</b>	<b>167.9</b>	<b>110.6</b>	<b>51.7</b>	<b>46.5</b>	<b>48.0</b>	<b>67.8</b>	<b>132.0</b>	<b>191.2</b>	<b>236.0</b>	<b>1,746.8</b>	<b>1.9%</b>
■ Biomass	96.6	86.1	78.8	61.1	35.9	14.0	11.6	11.8	18.5	47.4	67.9	89.0	618.6	7.1%
■ Biogas	5.3	5.0	5.2	4.4	3.8	2.7	2.3	2.1	2.4	3.7	6.0	7.1	49.9	8.6%
■ Hard coal	0.0	0.0	0.0	0.0	0.0	0.0	0.0	0.0	0.0	0.0	0.0	0.0	0.0	0.0%
■ Electrical energy	0.0	0.0	0.0	0.0	0.0	0.0	0.0	0.0	0.0	0.0	0.0	0.0	0.1	0.2%
■ Ambient energy (heat pump)	0.0	0.0	0.0	0.0	0.0	0.0	0.0	0.0	0.0	0.0	0.0	0.0	0.0	0.0%
■ Solar energy (solar panel)	0.0	0.0	0.0	0.0	0.0	0.0	0.0	0.0	0.0	0.0	0.0	0.0	0.2	28.8%
■ Brown coal	45.8	39.6	36.1	29.0	16.9	0.4	0.5	0.5	0.8	21.3	31.4	41.1	263.4	0.7%
■ Nuclear fuel	6.2	5.4	5.0	3.7	1.9	1.4	1.4	1.4	1.7	3.4	5.0	5.7	42.2	20.0%
■ Coke	0.0	0.0	0.0	0.0	0.0	0.0	0.0	0.0	0.0	0.0	0.0	0.0	0.0	0.0%
■ Waste heat	1.8	1.9	1.9	1.5	2.9	2.2	1.4	1.2	1.9	2.2	2.2	1.4	22.5	2.6%
■ Other liquid fuels	0.0	0.0	0.0	0.0	0.0	0.0	0.0	0.0	0.0	0.0	0.0	0.0	0.0	0.0%
■ Other solid fuels	0.4	0.9	1.4	1.1	0.3	0.3	0.3	0.2	0.2	1.2	1.2	1.2	8.9	0.3%
■ Other gases	0.0	0.0	0.0	0.0	0.0	0.0	0.0	0.0	0.0	0.0	0.0	0.0	0.0	0.0%
■ Other	0.0	0.0	0.0	0.0	0.0	0.0	0.0	0.0	0.0	0.0	0.0	0.0	0.0	0.0%
■ Fuel oils	0.1	0.1	0.1	0.1	0.0	0.0	0.0	0.0	0.0	0.1	0.1	0.1	0.9	0.3%
■ Natural gas	100.0	87.3	84.1	66.9	48.8	30.6	29.0	30.7	42.3	52.8	77.4	90.3	740.3	2.9%
<b>Heat consumption by economic sector*</b>	<b>238.6</b>	<b>209.8</b>	<b>194.7</b>	<b>153.3</b>	<b>99.3</b>	<b>46.0</b>	<b>39.1</b>	<b>40.1</b>	<b>59.6</b>	<b>119.1</b>	<b>175.7</b>	<b>222.5</b>	<b>1,597.9</b>	<b>1.9%</b>
■ Industry	23.2	21.7	20.7	16.9	10.6	9.6	9.2	8.8	9.3	10.4	13.8	19.2	173.5	0.8%
■ Energy	6.2	5.4	5.0	3.7	1.9	1.4	1.4	1.4	1.7	3.4	5.0	5.7	42.2	1.9%
■ Transport	0.7	0.6	0.5	0.3	0.1	0.0	0.0	0.0	0.1	0.2	0.4	0.6	3.6	0.5%
■ Construction	0.6	0.5	0.5	0.5	0.3	0.0	0.0	0.0	0.1	0.3	0.4	0.7	4.0	1.7%
■ Farming and forestry	9.3	8.7	9.0	7.5	5.9	3.1	2.6	2.6	4.5	3.3	7.7	9.0	73.1	17.3%
■ Households	142.6	123.6	116.1	91.3	61.2	25.0	20.6	21.1	33.6	73.9	104.2	133.5	946.6	2.6%
■ Retail, services, schools, health care	55.9	49.2	42.8	33.1	19.2	6.9	5.3	6.2	10.4	27.6	44.0	53.7	354.4	1.8%
■ Other	0.1	0.1	0.1	0.0	0.0	0.0	0.0	0.0	0.0	0.0	0.1	0.1	0.5	0.0%

\* The difference between supply and consumption includes losses of bought heat and a part of unidentified heat distribution.

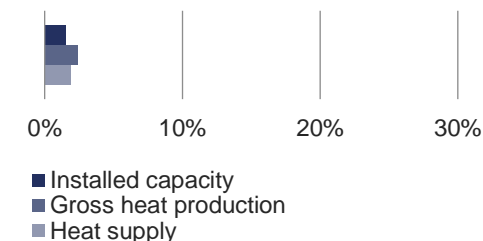
### Heat supply by fuel [TJ]



### Heat consumption by national economy sector [TJ]



### Share in CR



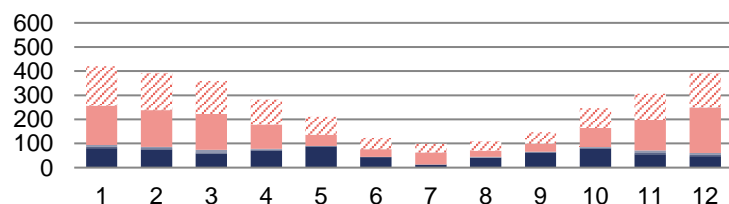
## 8.6 Heat production, supply and consumption: Královéhradecký Region



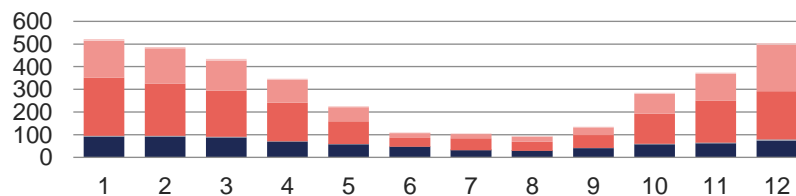
	First quarter			Second quarter			Third quarter			Fourth quarter			Total	Share in CR
	January	February	March	April	May	June	July	August	September	October	November	December		
<b>Total installed capacity [MWt]</b>	<b>1,069.0</b>	<b>1,069.0</b>	<b>1,069.3</b>	<b>1,069.3</b>	<b>1,069.3</b>	<b>1,069.3</b>	<b>1,072.5</b>	<b>1,072.5</b>	<b>1,072.5</b>	<b>1,074.1</b>	<b>1,072.3</b>	<b>1,072.3</b>	<b>1,072.3</b>	<b>2.7%</b>
<b>Gross heat production [TJ]</b>	<b>599.9</b>	<b>503.1</b>	<b>474.3</b>	<b>383.7</b>	<b>301.1</b>	<b>200.1</b>	<b>171.7</b>	<b>178.0</b>	<b>290.2</b>	<b>460.0</b>	<b>526.5</b>	<b>636.0</b>	<b>4,724.6</b>	<b>2.9%</b>
<b>Heat supply by fuel [TJ]</b>	<b>419.8</b>	<b>391.8</b>	<b>358.7</b>	<b>281.7</b>	<b>211.1</b>	<b>123.4</b>	<b>99.3</b>	<b>110.0</b>	<b>146.6</b>	<b>245.8</b>	<b>306.8</b>	<b>391.4</b>	<b>3,086.3</b>	<b>3.3%</b>
■ Biomass	80.3	75.5	58.3	69.8	86.5	42.8	11.4	40.7	62.4	79.9	55.2	47.2	710.3	8.1%
■ Biogas	5.1	4.5	4.7	3.9	3.5	2.0	1.6	1.2	2.3	3.8	4.8	5.2	42.5	7.3%
■ Hard coal	9.1	6.2	10.7	3.8	0.0	0.0	0.4	3.0	0.6	2.4	10.8	7.7	54.6	0.6%
■ Electrical energy	0.0	0.0	0.0	0.0	0.0	0.0	0.0	0.0	0.0	0.0	0.0	0.0	0.0	0.0%
■ Ambient energy (heat pump)	0.0	0.0	0.0	0.0	0.0	0.0	0.0	0.0	0.0	0.0	0.0	0.0	0.0	0.0%
■ Solar energy (solar panel)	0.0	0.0	0.0	0.0	0.0	0.0	0.0	0.0	0.0	0.0	0.0	0.0	0.0	0.2%
■ Brown coal	162.5	151.8	148.9	101.7	46.2	31.5	49.6	24.9	34.3	77.5	126.0	189.6	1,144.4	2.9%
■ Nuclear fuel	0.0	0.0	0.0	0.0	0.0	0.0	0.0	0.0	0.0	0.0	0.0	0.0	0.0	0.0%
■ Coke	0.0	0.0	0.0	0.0	0.0	0.0	0.0	0.0	0.0	0.0	0.0	0.0	0.0	0.0%
■ Waste heat	0.0	0.0	0.0	0.0	0.0	0.0	0.0	0.0	0.0	0.0	0.0	0.0	0.0	0.0%
■ Other liquid fuels	0.0	0.0	0.0	0.0	0.0	0.0	0.0	0.0	0.0	0.0	0.0	0.0	0.0	0.0%
■ Other solid fuels	0.0	0.0	0.0	0.0	0.0	0.0	0.0	0.0	0.0	0.0	0.0	0.0	0.0	0.0%
■ Other gases	0.0	0.0	0.0	0.0	0.0	0.0	0.0	0.0	0.0	0.0	0.0	0.0	0.0	0.0%
■ Other	0.0	0.0	0.0	0.0	0.0	0.0	0.0	0.0	0.0	0.0	0.0	0.0	0.0	0.0%
■ Fuel oils	0.1	0.6	0.1	0.0	0.0	0.0	0.0	0.0	0.0	0.0	0.0	1.3	2.2	0.7%
■ Natural gas	162.8	153.3	136.0	102.5	74.9	47.1	36.2	40.1	47.0	82.2	109.9	140.4	1,132.3	4.4%
<b>Heat supply from Pardubický Region</b>	<b>188.9</b>	<b>174.2</b>	<b>153.4</b>	<b>117.1</b>	<b>74.8</b>	<b>23.2</b>	<b>21.0</b>	<b>23.4</b>	<b>35.4</b>	<b>98.5</b>	<b>134.9</b>	<b>181.3</b>	<b>1,226.3</b>	
<b>Heat consumption by economic sector*</b>	<b>522.0</b>	<b>487.2</b>	<b>434.3</b>	<b>346.4</b>	<b>225.8</b>	<b>110.4</b>	<b>104.9</b>	<b>94.0</b>	<b>135.3</b>	<b>285.1</b>	<b>373.8</b>	<b>504.1</b>	<b>3,623.4</b>	<b>4.3%</b>
■ Industry	90.3	90.2	87.2	68.5	57.6	46.4	31.5	29.3	41.2	57.2	62.2	73.1	734.8	3.3%
■ Energy	1.2	1.1	1.0	0.7	0.5	0.3	0.2	0.3	0.4	0.6	0.8	1.2	8.3	0.4%
■ Transport	2.8	2.7	2.3	1.8	1.1	0.3	0.2	0.2	0.5	1.2	2.0	4.9	20.0	2.7%
■ Construction	1.3	1.1	1.0	0.7	0.3	0.0	0.0	0.0	0.1	0.5	0.7	1.0	6.8	2.9%
■ Farming and forestry	0.3	0.2	0.1	0.1	0.0	0.0	0.0	0.0	0.0	0.1	0.1	0.5	1.5	0.3%
■ Households	254.7	230.9	203.7	169.5	99.7	38.7	52.3	39.2	56.5	133.0	183.5	211.1	1,672.8	4.6%
■ Retail, services, schools, health care	164.5	154.2	132.5	100.1	62.4	21.6	17.9	22.0	33.7	87.8	119.0	205.0	1,120.6	5.6%
■ Other	7.0	6.6	6.5	5.0	4.1	3.0	2.9	3.0	2.9	4.6	5.5	7.4	58.6	3.3%

\* The difference between supply and consumption includes losses of bought heat and a part of unidentified heat distribution.

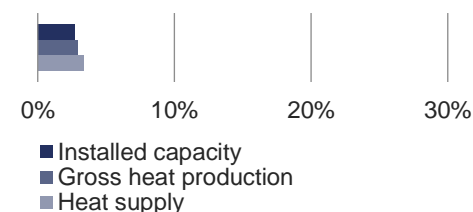
### Heat supply by fuel [TJ]



### Heat consumption by national economy sector [TJ]



### Share in CR



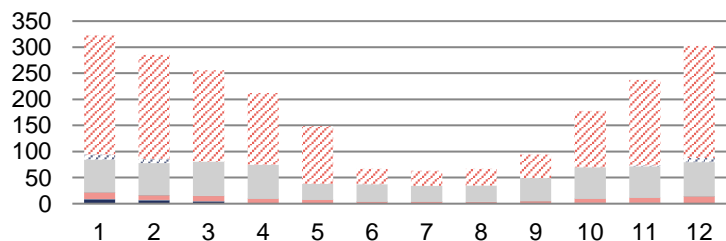
## 8.7 Heat production, supply and consumption: Liberecký Region



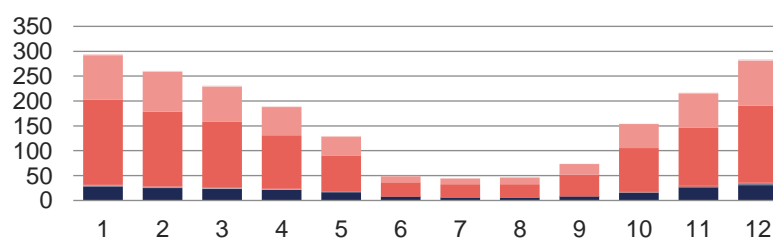
	First quarter			Second quarter			Third quarter			Fourth quarter			Total	Share in CR
	January	February	March	April	May	June	July	August	September	October	November	December		
<b>Total installed capacity [MWt]</b>	<b>487.3</b>	<b>487.3</b>	<b>487.3</b>	<b>487.2</b>	<b>487.2</b>	<b>487.2</b>	<b>488.1</b>	<b>488.1</b>	<b>488.1</b>	<b>488.1</b>	<b>488.1</b>	<b>488.1</b>	<b>488.1</b>	<b>1.3%</b>
<b>Gross heat production [TJ]</b>	<b>356.9</b>	<b>316.2</b>	<b>287.6</b>	<b>244.3</b>	<b>172.8</b>	<b>109.9</b>	<b>101.9</b>	<b>103.2</b>	<b>133.3</b>	<b>209.2</b>	<b>267.1</b>	<b>335.1</b>	<b>2,637.6</b>	<b>1.6%</b>
<b>Heat supply by fuel [TJ]</b>	<b>322.8</b>	<b>285.0</b>	<b>256.0</b>	<b>212.1</b>	<b>148.5</b>	<b>66.9</b>	<b>63.4</b>	<b>66.6</b>	<b>94.4</b>	<b>177.7</b>	<b>237.5</b>	<b>302.4</b>	<b>2,233.2</b>	<b>2.4%</b>
■ Biomass	8.1	6.0	4.1	0.2	0.2	0.1	0.1	0.1	0.0	0.5	0.7	0.1	20.1	0.2%
■ Biogas	1.1	1.0	1.0	1.0	0.9	0.6	0.7	0.7	0.7	0.9	0.9	1.0	10.7	1.8%
■ Hard coal	0.0	0.0	0.0	0.0	0.0	0.0	0.0	0.0	0.0	0.0	0.0	0.0	0.0	0.0%
■ Electrical energy	0.0	0.0	0.0	0.0	0.0	0.0	0.0	0.0	0.0	0.0	0.0	0.0	0.0	0.0%
■ Ambient energy (heat pump)	0.0	0.0	0.0	0.0	0.0	0.0	0.0	0.0	0.0	0.0	0.0	0.0	0.0	0.0%
■ Solar energy (solar panel)	0.0	0.0	0.0	0.0	0.0	0.0	0.0	0.0	0.0	0.0	0.0	0.0	0.0	0.0%
■ Brown coal	12.4	9.0	9.7	8.0	6.2	2.6	2.6	2.4	4.0	7.7	9.6	12.7	86.8	0.2%
■ Nuclear fuel	0.0	0.0	0.0	0.0	0.0	0.0	0.0	0.0	0.0	0.0	0.0	0.0	0.0	0.0%
■ Coke	0.0	0.0	0.0	0.0	0.0	0.0	0.0	0.0	0.0	0.0	0.0	0.0	0.0	0.0%
■ Waste heat	0.3	0.3	0.4	0.3	0.1	0.1	0.2	0.2	0.2	0.3	0.3	0.4	3.1	0.4%
■ Other liquid fuels	0.0	0.0	0.0	0.0	0.0	0.0	0.0	0.0	0.0	0.0	0.0	0.0	0.0	0.0%
■ Other solid fuels	62.7	61.2	65.8	65.5	30.7	33.7	30.9	31.2	44.2	60.6	60.3	65.5	612.2	21.2%
■ Other gases	0.0	0.0	0.0	0.0	0.0	0.0	0.0	0.0	0.0	0.0	0.0	0.0	0.0	0.0%
■ Other	0.0	0.0	0.0	0.0	0.0	0.0	0.0	0.0	0.0	0.0	0.0	0.0	0.0	0.0%
■ Fuel oils	9.9	8.2	0.0	0.0	0.0	0.0	0.0	0.0	0.0	0.0	1.7	7.7	27.5	9.5%
■ Natural gas	228.4	199.2	175.1	137.1	110.3	29.8	28.9	32.0	45.3	107.6	164.0	215.1	1,472.7	5.8%
<b>Heat consumption by economic sector*</b>	<b>294.2</b>	<b>260.6</b>	<b>230.7</b>	<b>189.3</b>	<b>129.4</b>	<b>49.1</b>	<b>44.4</b>	<b>46.1</b>	<b>74.0</b>	<b>154.6</b>	<b>217.0</b>	<b>283.4</b>	<b>1,972.7</b>	<b>2.3%</b>
■ Industry	27.9	24.9	22.8	21.3	16.4	7.6	5.9	4.8	8.0	15.2	26.0	30.8	211.6	1.0%
■ Energy	1.1	1.0	0.8	0.6	0.3	0.0	0.0	0.0	0.1	0.5	1.4	2.2	8.2	0.4%
■ Transport	1.2	1.0	0.8	0.6	0.3	0.0	0.0	0.0	0.0	0.5	0.9	1.3	6.7	0.9%
■ Construction	0.3	0.4	0.3	0.2	0.1	0.0	0.0	0.0	0.0	0.1	0.2	0.3	2.0	0.9%
■ Farming and forestry	1.1	1.0	1.0	1.0	0.9	0.6	0.7	0.7	0.7	0.9	0.9	1.0	10.7	2.5%
■ Households	171.3	150.1	133.2	107.6	72.6	28.2	26.1	27.2	42.9	88.3	116.3	154.7	1,118.6	3.0%
■ Retail, services, schools, health care	89.1	80.0	69.7	56.4	37.7	12.4	11.5	13.2	21.8	47.8	69.6	90.8	599.8	3.0%
■ Other	2.3	2.1	2.0	1.5	1.0	0.2	0.1	0.2	0.4	1.3	1.7	2.2	15.1	0.9%

\* The difference between supply and consumption includes losses of bought heat and a part of unidentified heat distribution.

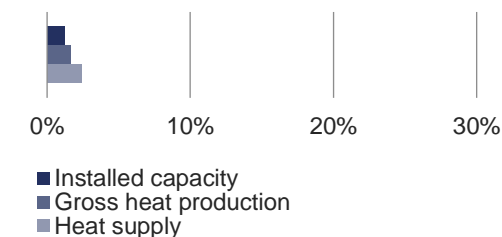
### Heat supply by fuel [TJ]



### Heat consumption by national economy sector [TJ]



### Share in CR



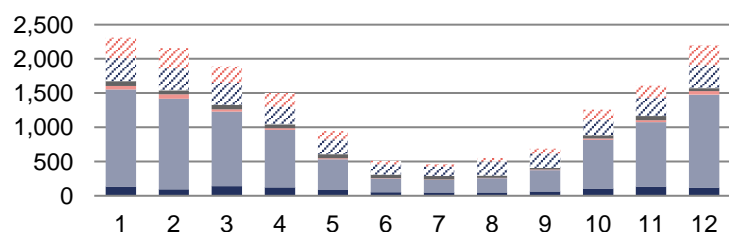
## 8.8 Heat production, supply and consumption: Moravskoslezský Region



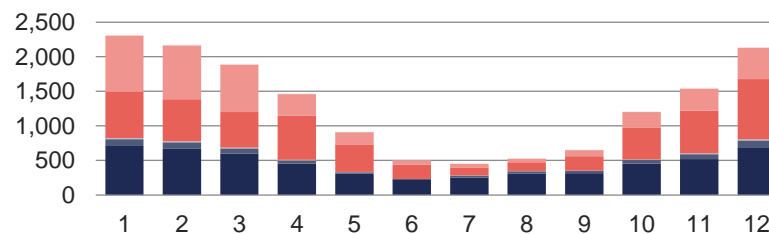
	First quarter			Second quarter			Third quarter			Fourth quarter			Total	Share in CR
	January	February	March	April	May	June	July	August	September	October	November	December		
<b>Total installed capacity [MWt]</b>	<b>6,594.6</b>	<b>6,594.6</b>	<b>6,585.5</b>	<b>6,585.5</b>	<b>6,595.0</b>	<b>6,593.8</b>	<b>6,595.0</b>	<b>6,110.9</b>	<b>6,111.1</b>	<b>6,118.6</b>	<b>6,118.6</b>	<b>6,118.5</b>	<b>6,118.5</b>	<b>15.7%</b>
<b>Gross heat production [TJ]</b>	<b>3,998.5</b>	<b>3,524.4</b>	<b>3,294.4</b>	<b>2,833.1</b>	<b>2,313.6</b>	<b>1,758.3</b>	<b>1,764.3</b>	<b>1,781.6</b>	<b>1,861.8</b>	<b>2,442.3</b>	<b>3,015.8</b>	<b>3,682.7</b>	<b>32,270.6</b>	<b>20.0%</b>
<b>Heat supply by fuel [TJ]</b>	<b>2,312.9</b>	<b>2,158.0</b>	<b>1,883.1</b>	<b>1,500.7</b>	<b>942.9</b>	<b>510.2</b>	<b>465.3</b>	<b>551.2</b>	<b>687.6</b>	<b>1,256.9</b>	<b>1,607.8</b>	<b>2,199.7</b>	<b>16,076.3</b>	<b>17.4%</b>
■ Biomass	133.2	93.5	138.7	121.5	84.0	50.1	46.8	45.5	63.4	101.6	129.2	115.5	1,123.0	12.9%
■ Biogas	0.1	0.2	0.1	0.0	0.1	0.0	0.0	0.0	0.0	0.0	0.0	0.2	1.0	0.2%
■ Hard coal	1,421.8	1,322.4	1,091.8	840.1	451.6	202.2	189.2	211.5	310.0	716.6	945.3	1,360.0	9,062.4	92.6%
■ Electrical energy	0.2	0.2	0.2	0.1	0.1	0.0	0.0	0.0	0.0	0.1	0.1	0.2	1.3	3.8%
■ Ambient energy (heat pump)	0.0	0.0	0.0	0.0	0.0	0.0	0.0	0.0	0.0	0.0	0.0	0.0	0.0	0.0%
■ Solar energy (solar panel)	0.0	0.0	0.0	0.0	0.0	0.0	0.0	0.0	0.0	0.0	0.0	0.0	0.0	0.0%
■ Brown coal	49.6	64.5	33.2	23.8	12.8	5.1	1.4	3.6	8.9	21.2	30.8	51.6	306.4	0.8%
■ Nuclear fuel	0.0	0.0	0.0	0.0	0.0	0.0	0.0	0.0	0.0	0.0	0.0	0.0	0.0	0.0%
■ Coke	0.0	0.0	0.0	0.0	0.0	0.0	0.0	0.0	0.0	0.0	0.0	0.0	0.0	0.0%
■ Waste heat	68.7	59.2	64.7	59.9	59.8	52.8	51.6	36.6	24.8	43.5	57.2	45.8	624.6	71.5%
■ Other liquid fuels	0.0	0.0	0.0	0.0	0.0	0.0	0.0	0.0	0.0	0.0	0.0	0.0	0.0	0.0%
■ Other solid fuels	1.7	1.8	0.4	0.4	0.1	0.2	0.9	0.0	2.4	0.8	1.4	2.0	12.1	0.4%
■ Other gases	334.8	323.9	317.9	259.3	212.9	146.1	135.6	201.4	209.7	224.8	268.8	326.4	2,961.5	74.5%
■ Other	0.0	0.0	0.0	0.0	0.0	0.0	0.0	0.0	0.0	0.0	0.0	0.0	0.0	0.0%
■ Fuel oils	0.3	0.7	0.5	0.7	0.3	0.2	0.1	0.3	0.1	0.2	0.5	0.2	4.0	1.4%
■ Natural gas	302.5	291.6	235.5	194.9	121.2	53.5	39.7	52.3	68.3	148.1	174.5	297.9	1,980.0	7.8%
<b>Heat consumption by economic sector*</b>	<b>2,311.5</b>	<b>2,172.5</b>	<b>1,892.3</b>	<b>1,465.9</b>	<b>914.5</b>	<b>500.8</b>	<b>454.4</b>	<b>527.5</b>	<b>652.3</b>	<b>1,205.9</b>	<b>1,543.9</b>	<b>2,134.2</b>	<b>15,775.7</b>	<b>18.7%</b>
■ Industry	710.6	669.9	597.7	455.3	313.5	226.9	252.4	313.8	316.7	457.8	521.3	692.2	5,528.0	25.1%
■ Energy	96.5	93.5	74.9	42.9	15.0	6.6	28.9	30.7	31.7	50.5	67.1	92.6	630.9	28.6%
■ Transport	9.6	9.0	7.1	5.4	1.9	0.4	0.4	0.4	0.9	3.5	6.2	9.4	54.3	7.3%
■ Construction	9.7	8.8	7.0	7.0	2.8	0.8	2.6	3.0	2.6	5.9	9.0	11.9	71.0	30.5%
■ Farming and forestry	0.0	0.0	0.0	0.0	0.0	0.0	0.0	0.0	0.0	0.0	0.0	0.0	0.0	0.0%
■ Households	665.6	606.4	514.7	639.0	400.9	202.0	116.4	125.8	210.6	462.3	616.5	870.1	5,430.2	14.8%
■ Retail, services, schools, health care	810.1	776.4	683.5	310.8	177.0	62.6	52.7	52.5	87.7	221.7	317.5	448.5	4,001.0	20.0%
■ Other	9.4	8.5	7.3	5.6	3.4	1.4	1.1	1.4	2.1	4.3	6.3	9.5	60.2	3.4%

\* The difference between supply and consumption includes losses of bought heat and a part of unidentified heat distribution.

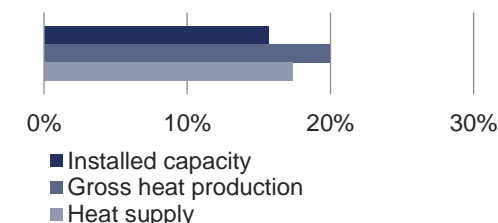
### Heat supply by fuel [TJ]



### Heat consumption by national economy sector [TJ]



### Share in CR





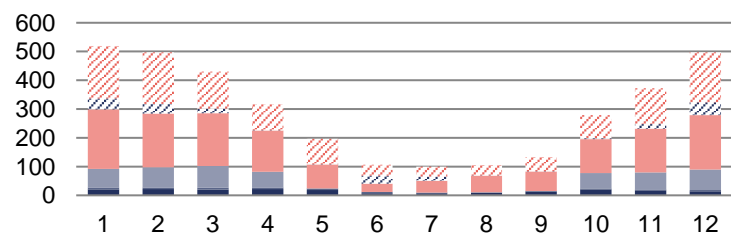
## 8.9 Heat production, supply and consumption: Olomoucký Region



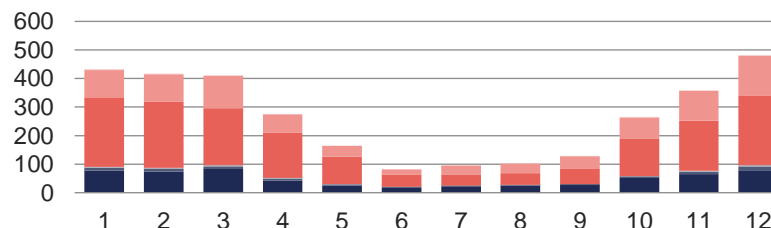
	First quarter			Second quarter			Third quarter			Fourth quarter			Total	Share in CR
	January	February	March	April	May	June	July	August	September	October	November	December		
<b>Total installed capacity [MWt]</b>	<b>1,292.3</b>	<b>1,292.3</b>	<b>1,292.7</b>	<b>1,292.7</b>	<b>1,292.7</b>	<b>1,292.7</b>	<b>1,294.1</b>	<b>1,294.1</b>	<b>1,294.3</b>	<b>1,286.7</b>	<b>1,286.7</b>	<b>1,286.7</b>	<b>1,286.7</b>	<b>3.3%</b>
<b>Gross heat production [TJ]</b>	<b>893.1</b>	<b>753.4</b>	<b>691.7</b>	<b>554.5</b>	<b>421.8</b>	<b>306.9</b>	<b>290.2</b>	<b>297.8</b>	<b>380.7</b>	<b>616.0</b>	<b>744.9</b>	<b>890.2</b>	<b>6,841.2</b>	<b>4.2%</b>
<b>Heat supply by fuel [TJ]</b>	<b>519.8</b>	<b>496.5</b>	<b>430.7</b>	<b>317.3</b>	<b>196.2</b>	<b>106.5</b>	<b>99.6</b>	<b>105.4</b>	<b>133.5</b>	<b>278.4</b>	<b>372.6</b>	<b>497.5</b>	<b>3,554.1</b>	<b>3.8%</b>
■ Biomass	21.2	21.8	20.1	21.6	18.8	7.9	7.6	8.2	13.1	20.9	17.0	14.2	192.5	2.2%
■ Biogas	6.1	5.7	5.7	6.1	4.9	3.4	2.2	2.4	2.1	3.3	3.6	3.9	49.4	8.5%
■ Hard coal	64.4	70.0	76.0	54.3	0.0	0.0	0.0	0.0	0.0	53.5	59.3	71.6	449.1	4.6%
■ Electrical energy	0.0	0.0	0.0	0.0	0.0	0.2	0.2	0.3	0.1	0.0	0.0	0.0	0.8	2.3%
■ Ambient energy (heat pump)	0.0	0.0	0.0	0.0	0.0	0.0	0.0	0.0	0.0	0.0	0.0	0.0	0.0	0.0%
■ Solar energy (solar panel)	0.0	0.0	0.0	0.0	0.0	0.0	0.0	0.0	0.0	0.0	0.0	0.0	0.0	0.0%
■ Brown coal	207.0	186.5	183.5	142.9	84.2	29.6	41.0	57.5	67.8	117.5	152.0	189.7	1,459.3	3.7%
■ Nuclear fuel	0.0	0.0	0.0	0.0	0.0	0.0	0.0	0.0	0.0	0.0	0.0	0.0	0.0	0.0%
■ Coke	0.0	0.0	0.0	0.0	0.0	0.0	0.0	0.0	0.0	0.0	0.0	0.0	0.0	0.0%
■ Waste heat	0.0	0.0	0.0	0.0	0.0	0.0	0.0	0.0	0.0	0.0	0.0	0.0	0.0	0.0%
■ Other liquid fuels	0.0	0.0	0.0	0.0	0.0	0.0	0.0	0.0	0.0	0.0	0.0	0.0	0.0	0.0%
■ Other solid fuels	0.0	0.0	0.0	0.0	0.0	0.0	0.0	0.0	0.0	0.0	0.0	0.0	0.0	0.0%
■ Other gases	0.0	0.0	0.0	0.0	0.0	0.0	0.0	0.0	0.0	0.0	0.0	0.0	0.0	0.0%
■ Other	0.0	0.0	0.0	0.0	0.0	0.0	0.0	0.0	0.0	0.0	0.0	0.0	0.0	0.0%
■ Fuel oils	37.8	33.8	15.3	1.4	0.8	26.9	14.7	1.8	0.7	3.9	16.4	44.1	197.7	68.2%
■ Natural gas	183.3	178.7	130.0	90.9	87.5	38.5	33.9	35.2	49.6	79.4	124.4	173.9	1,205.3	4.7%
<b>Heat consumption by economic sector*</b>	<b>432.4</b>	<b>416.7</b>	<b>411.2</b>	<b>275.8</b>	<b>164.6</b>	<b>81.8</b>	<b>95.0</b>	<b>101.9</b>	<b>128.2</b>	<b>265.2</b>	<b>358.5</b>	<b>482.5</b>	<b>3,213.9</b>	<b>3.8%</b>
■ Industry	76.9	73.6	82.6	42.3	24.7	16.7	22.1	24.3	26.7	52.1	65.2	78.9	586.1	2.7%
■ Energy	10.2	9.2	9.8	7.3	4.1	3.6	2.9	2.9	3.2	4.7	8.0	12.5	78.6	3.6%
■ Transport	0.3	0.3	0.2	0.1	0.0	0.0	0.0	0.0	0.0	0.0	0.2	0.3	1.5	0.2%
■ Construction	3.1	3.3	3.6	2.0	1.0	0.2	0.0	0.1	0.1	1.0	2.7	4.6	21.7	9.3%
■ Farming and forestry	0.8	0.9	1.0	1.7	0.9	0.4	0.4	0.4	0.5	0.9	1.0	1.2	10.4	2.4%
■ Households	242.6	231.9	198.8	156.4	95.5	43.4	38.8	40.2	54.9	129.3	175.2	243.4	1,650.4	4.5%
■ Retail, services, schools, health care	96.0	95.0	113.0	64.4	37.3	17.2	30.5	33.8	42.0	75.5	104.3	139.1	848.2	4.2%
■ Other	2.5	2.4	2.1	1.6	0.9	0.3	0.2	0.3	0.8	1.6	2.0	2.5	17.1	1.0%

\* The difference between supply and consumption includes losses of bought heat and a part of unidentified heat distribution.

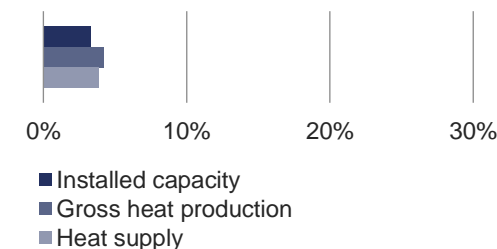
### Heat supply by fuel [TJ]



### Heat consumption by national economy sector [TJ]



### Share in CR



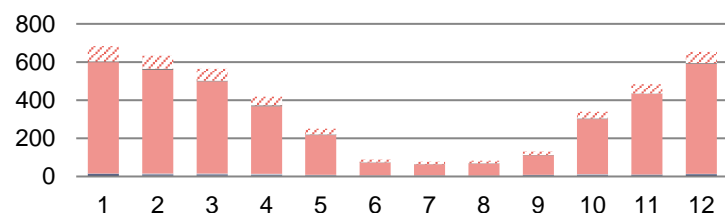
## 8.10 Heat production, supply and consumption: Pardubický Region



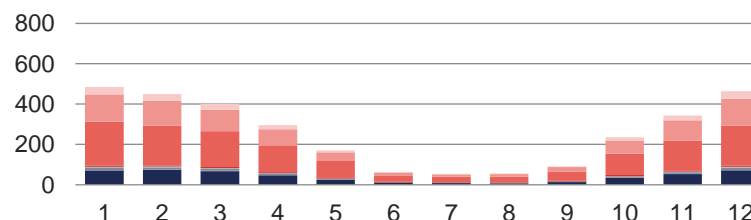
	First quarter			Second quarter			Third quarter			Fourth quarter			Total	Share in CR
	January	February	March	April	May	June	July	August	September	October	November	December		
<b>Total installed capacity [MWt]</b>	<b>3,722.1</b>	<b>3,722.1</b>	<b>3,723.0</b>	<b>3,723.0</b>	<b>3,723.1</b>	<b>3,723.8</b>	<b>3,724.2</b>	<b>3,724.2</b>	<b>3,724.2</b>	<b>3,724.3</b>	<b>3,724.5</b>	<b>3,724.3</b>	<b>3,724.3</b>	<b>9.5%</b>
<b>Gross heat production [TJ]</b>	<b>962.9</b>	<b>884.0</b>	<b>825.7</b>	<b>662.3</b>	<b>471.0</b>	<b>264.4</b>	<b>246.3</b>	<b>223.2</b>	<b>295.5</b>	<b>560.1</b>	<b>722.7</b>	<b>921.7</b>	<b>7,039.7</b>	<b>4.4%</b>
<b>Heat supply by fuel [TJ]</b>	<b>682.6</b>	<b>632.7</b>	<b>563.6</b>	<b>418.3</b>	<b>251.2</b>	<b>89.3</b>	<b>78.4</b>	<b>82.5</b>	<b>130.8</b>	<b>339.2</b>	<b>484.4</b>	<b>652.9</b>	<b>4,405.9</b>	<b>4.8%</b>
■ Biomass	6.7	5.4	5.0	4.0	2.6	0.7	0.7	0.7	2.0	3.6	5.0	6.8	43.3	0.5%
■ Biogas	6.5	4.8	5.2	4.6	3.4	2.6	2.4	2.1	4.9	6.0	3.5	5.2	51.0	8.7%
■ Hard coal	1.6	3.6	3.6	2.3	1.4	1.0	0.6	0.0	0.5	0.2	0.8	0.0	15.8	0.2%
■ Electrical energy	1.5	1.9	2.0	2.4	2.0	1.4	1.7	1.5	2.2	2.5	1.6	1.7	22.3	66.4%
■ Ambient energy (heat pump)	0.0	0.0	0.0	0.0	0.0	0.0	0.0	0.0	0.0	0.0	0.0	0.0	0.0	0.0%
■ Solar energy (solar panel)	0.0	0.0	0.0	0.0	0.0	0.0	0.0	0.0	0.0	0.0	0.0	0.0	0.0	0.0%
■ Brown coal	582.9	544.0	483.1	355.1	207.8	67.4	58.1	63.8	102.4	289.2	422.3	577.3	3,753.5	9.5%
■ Nuclear fuel	0.0	0.0	0.0	0.0	0.0	0.0	0.0	0.0	0.0	0.0	0.0	0.0	0.0	0.0%
■ Coke	0.0	0.0	0.0	0.0	0.0	0.0	0.0	0.0	0.0	0.0	0.0	0.0	0.0	0.0%
■ Waste heat	4.1	5.1	4.0	4.0	2.4	1.7	1.5	1.0	1.2	2.3	2.4	3.5	33.2	3.8%
■ Other liquid fuels	0.0	0.0	0.0	0.0	0.0	0.0	0.0	0.0	0.0	0.0	0.0	0.0	0.0	0.0%
■ Other solid fuels	0.0	0.0	0.0	0.0	0.0	0.0	0.0	0.0	0.0	0.0	0.0	0.0	0.0	0.0%
■ Other gases	0.0	0.0	0.0	0.0	0.0	0.0	0.0	0.0	0.0	0.0	0.0	0.0	0.0	0.0%
■ Other	0.0	0.0	0.0	0.0	0.0	0.0	0.0	0.0	0.0	0.0	0.0	0.0	0.0	0.0%
■ Fuel oils	0.0	0.0	0.0	0.0	0.0	0.0	0.0	0.0	0.0	0.0	0.0	0.0	0.0	0.0%
■ Natural gas	79.3	67.8	60.7	45.9	31.8	14.6	13.5	13.4	17.6	35.3	48.7	58.3	486.8	1.9%
<b>Heat supply to Královehradecký Region</b>	<b>-188.9</b>	<b>-174.2</b>	<b>-153.4</b>	<b>-117.1</b>	<b>-74.8</b>	<b>-23.2</b>	<b>-21.0</b>	<b>-23.4</b>	<b>-35.4</b>	<b>-98.5</b>	<b>-134.9</b>	<b>-181.3</b>	<b>-1,226.3</b>	
<b>Heat consumption by economic sector*</b>	<b>484.9</b>	<b>450.4</b>	<b>402.0</b>	<b>295.3</b>	<b>170.6</b>	<b>63.1</b>	<b>54.1</b>	<b>55.9</b>	<b>91.8</b>	<b>236.1</b>	<b>343.4</b>	<b>463.4</b>	<b>3,111.0</b>	<b>3.7%</b>
■ Industry	69.8	72.9	67.5	46.8	24.3	10.1	8.0	7.6	13.6	33.2	52.6	70.8	477.4	2.2%
■ Energy	2.4	2.5	2.3	2.2	1.9	1.2	0.9	0.5	1.4	1.6	2.3	2.5	21.7	1.0%
■ Transport	11.4	10.8	9.2	6.5	3.5	0.6	0.5	0.5	1.1	4.9	7.6	11.1	67.7	9.1%
■ Construction	5.1	4.8	4.4	2.6	1.3	0.4	0.3	0.3	0.6	2.0	2.9	4.8	29.4	12.6%
■ Farming and forestry	5.9	4.4	4.9	4.1	3.1	2.4	2.2	1.8	4.7	5.8	3.1	4.8	47.3	11.2%
■ Households	218.1	196.7	176.6	133.9	83.4	31.9	28.5	30.1	44.3	106.4	150.9	198.3	1,399.2	3.8%
■ Retail, services, schools, health care	135.7	124.7	107.5	78.9	43.3	13.8	11.6	12.6	21.5	66.1	100.9	135.0	851.5	4.3%
■ Other	36.5	33.6	29.7	20.3	9.6	2.7	2.1	2.5	4.5	16.0	23.1	36.2	216.7	12.2%

\* The difference between supply and consumption includes losses of bought heat, a part of unidentified heat distribution, and the heat portion supplied to the Hradec Králové SZT.

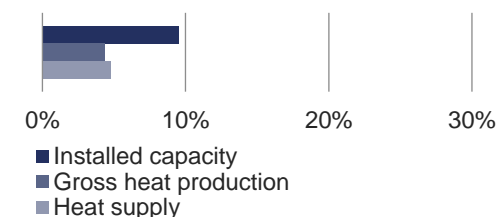
### Heat supply by fuel [TJ]



### Heat consumption by national sector [TJ]



### Share in CR



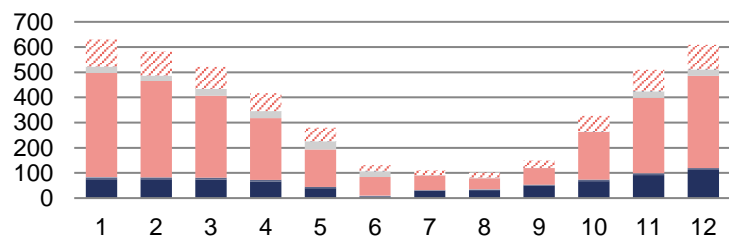
## 8.11 Heat production, supply and consumption: Plzeňský Region



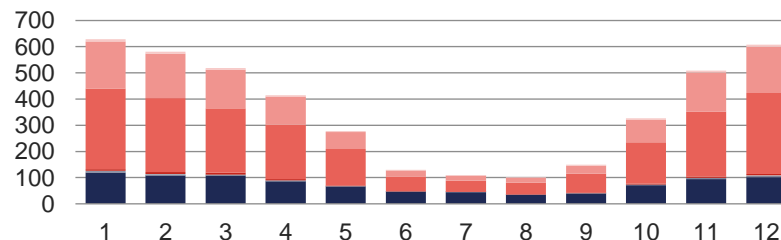
	First quarter			Second quarter			Third quarter			Fourth quarter			Total	Share in CR
	January	February	March	April	May	June	July	August	September	October	November	December		
<b>Total installed capacity [MWt]</b>	<b>1,144.9</b>	<b>1,144.5</b>	<b>1,144.5</b>	<b>1,144.5</b>	<b>1,144.5</b>	<b>1,144.5</b>	<b>1,141.9</b>	<b>1,141.9</b>	<b>1,141.9</b>	<b>1,140.9</b>	<b>1,070.9</b>	<b>1,070.9</b>	<b>1,070.9</b>	<b>2.7%</b>
<b>Gross heat production [TJ]</b>	<b>817.0</b>	<b>729.0</b>	<b>685.9</b>	<b>547.6</b>	<b>405.2</b>	<b>234.0</b>	<b>213.0</b>	<b>212.7</b>	<b>273.3</b>	<b>495.9</b>	<b>669.9</b>	<b>786.0</b>	<b>6,069.4</b>	<b>3.8%</b>
<b>Heat supply by fuel [TJ]</b>	<b>630.4</b>	<b>582.6</b>	<b>521.1</b>	<b>416.3</b>	<b>279.6</b>	<b>130.2</b>	<b>109.9</b>	<b>101.7</b>	<b>149.5</b>	<b>326.9</b>	<b>509.1</b>	<b>609.0</b>	<b>4,366.4</b>	<b>4.7%</b>
■ Biomass	74.4	75.1	73.1	65.8	39.0	6.4	28.6	31.9	49.6	67.5	91.7	111.4	714.8	8.2%
■ Biogas	8.6	7.5	7.7	6.5	5.6	2.8	2.6	2.6	3.4	6.0	7.6	8.1	68.9	11.8%
■ Hard coal	0.0	0.0	0.0	0.0	0.0	0.0	0.0	0.0	0.0	0.0	0.0	0.0	0.0	0.0%
■ Electrical energy	0.2	0.2	0.2	0.2	0.2	0.3	0.4	0.3	0.3	0.2	0.2	0.2	2.7	8.2%
■ Ambient energy (heat pump)	0.0	0.0	0.0	0.0	0.0	0.0	0.0	0.0	0.0	0.0	0.0	0.0	0.0	0.0%
■ Solar energy (solar panel)	0.0	0.0	0.0	0.0	0.0	0.0	0.0	0.0	0.0	0.0	0.0	0.0	0.0	0.0%
■ Brown coal	414.2	381.8	326.3	245.1	148.7	73.9	58.3	44.3	66.5	189.2	298.2	365.2	2,611.6	6.6%
■ Nuclear fuel	0.0	0.0	0.0	0.0	0.0	0.0	0.0	0.0	0.0	0.0	0.0	0.0	0.0	0.0%
■ Coke	0.0	0.0	0.0	0.0	0.0	0.0	0.0	0.0	0.0	0.0	0.0	0.0	0.0	0.0%
■ Waste heat	0.0	0.0	0.0	0.0	0.0	0.0	0.0	0.0	0.0	0.0	0.0	0.0	0.0	0.0%
■ Other liquid fuels	0.0	0.0	0.0	0.0	0.0	0.0	0.0	0.0	0.0	0.0	0.0	0.0	0.0	0.0%
■ Other solid fuels	25.2	22.3	26.7	28.4	32.2	23.8	1.4	1.6	0.9	1.4	26.9	26.6	217.3	7.5%
■ Other gases	0.1	0.0	0.0	0.0	0.1	0.1	0.0	0.0	0.1	0.0	0.1	0.1	0.6	0.0%
■ Other	0.0	0.0	0.0	0.0	0.0	0.0	0.0	0.0	0.0	0.0	0.0	0.0	0.0	0.0%
■ Fuel oils	0.0	0.0	0.2	0.1	0.1	0.0	0.0	0.0	0.3	1.7	1.3	0.0	3.8	1.3%
■ Natural gas	107.9	95.6	87.0	70.1	53.6	22.9	18.7	20.9	28.4	60.9	83.2	97.4	746.6	2.9%
<b>Heat consumption by economic sector*</b>	<b>628.6</b>	<b>580.8</b>	<b>518.9</b>	<b>415.0</b>	<b>278.3</b>	<b>129.4</b>	<b>109.2</b>	<b>101.7</b>	<b>149.2</b>	<b>327.1</b>	<b>508.8</b>	<b>607.2</b>	<b>4,354.3</b>	<b>5.2%</b>
■ Industry	119.4	107.6	106.2	85.6	66.3	46.2	44.7	34.3	40.0	70.7	94.5	101.4	916.8	4.2%
■ Energy	0.3	0.2	0.3	0.3	0.3	0.3	0.3	0.3	0.2	0.3	0.2	0.2	3.1	0.1%
■ Transport	5.8	5.3	5.0	3.4	0.5	0.1	0.0	0.1	0.1	2.5	4.6	5.6	32.9	4.4%
■ Construction	0.7	1.0	0.6	0.4	0.2	0.0	0.0	0.0	0.0	0.2	0.4	1.8	5.5	2.3%
■ Farming and forestry	5.6	6.9	7.3	5.4	2.4	1.2	1.1	1.0	1.4	3.3	4.4	5.1	45.0	10.6%
■ Households	308.0	282.3	244.8	207.1	139.4	54.7	42.0	44.9	73.0	158.4	248.0	308.8	2,111.5	5.7%
■ Retail, services, schools, health care	180.2	170.2	147.9	107.8	65.6	25.4	19.7	19.4	31.6	86.8	149.6	176.2	1,180.4	5.9%
■ Other	8.6	7.3	6.9	5.1	3.7	1.5	1.4	1.8	2.9	5.0	6.9	8.1	59.1	3.3%

\* The difference between supply and consumption includes losses of bought heat and a part of unidentified heat distribution.

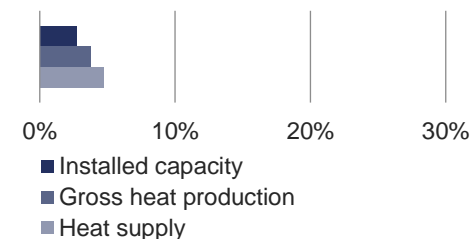
### Heat supply by fuel [TJ]



### Heat consumption by national economy sector [TJ]



### Share in CR



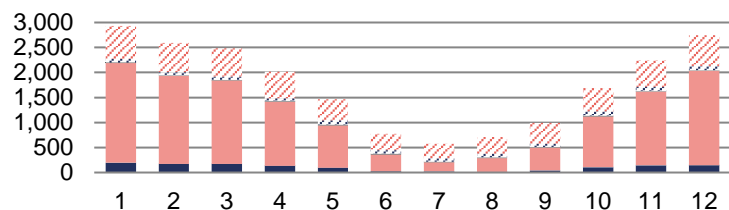
## 8.12 Heat production, supply and consumption: Středočeský Region



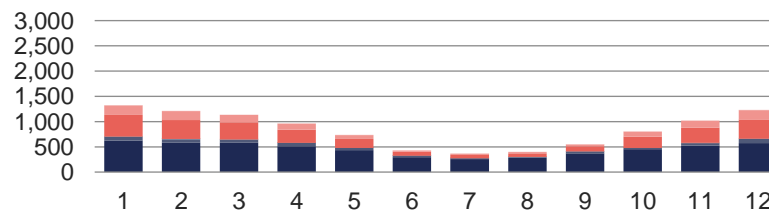
	First quarter			Second quarter			Third quarter			Fourth quarter			Total	Share in CR
	January	February	March	April	May	June	July	August	September	October	November	December		
<b>Total installed capacity [MWt]</b>	<b>4,377.9</b>	<b>4,379.5</b>	<b>4,379.5</b>	<b>4,377.7</b>	<b>4,378.8</b>	<b>4,378.9</b>	<b>4,378.9</b>	<b>4,377.7</b>	<b>4,377.7</b>	<b>4,359.7</b>	<b>4,359.8</b>	<b>4,360.1</b>	<b>4,360.1</b>	<b>11.2%</b>
<b>Gross heat production [TJ]</b>	<b>3,588.1</b>	<b>3,117.0</b>	<b>2,999.8</b>	<b>2,489.7</b>	<b>1,981.7</b>	<b>1,247.7</b>	<b>1,028.4</b>	<b>1,249.7</b>	<b>1,579.7</b>	<b>2,435.4</b>	<b>2,936.4</b>	<b>3,465.4</b>	<b>28,119.1</b>	<b>17.4%</b>
<b>Heat supply by fuel [TJ]</b>	<b>2,928.8</b>	<b>2,593.1</b>	<b>2,482.7</b>	<b>2,017.6</b>	<b>1,463.9</b>	<b>772.0</b>	<b>573.3</b>	<b>706.9</b>	<b>989.0</b>	<b>1,688.0</b>	<b>2,240.3</b>	<b>2,744.8</b>	<b>21,200.4</b>	<b>22.9%</b>
■ Biomass	190.7	171.0	169.4	132.4	94.5	24.2	20.7	10.5	39.3	101.2	141.1	144.8	1,239.8	14.2%
■ Biogas	4.4	3.9	3.9	3.7	3.3	2.2	2.5	2.7	3.1	4.4	4.7	4.8	43.7	7.5%
■ Hard coal	0.0	0.0	0.0	0.0	0.0	0.0	0.0	0.0	0.0	0.0	0.1	0.0	0.2	0.0%
■ Electrical energy	0.0	0.0	0.0	0.0	0.0	0.0	0.0	0.0	0.0	0.0	0.0	0.0	0.0	0.0%
■ Ambient energy (heat pump)	0.0	0.0	0.0	0.0	0.0	0.0	0.0	0.0	0.0	0.0	0.0	0.0	0.0	0.0%
■ Solar energy (solar panel)	0.0	0.0	0.0	0.0	0.0	0.0	0.0	0.0	0.0	0.0	0.0	0.0	0.0	0.0%
■ Brown coal	1,991.3	1,760.2	1,667.2	1,278.1	843.1	332.5	184.2	274.0	453.4	1,015.0	1,473.5	1,882.3	13,154.7	33.4%
■ Nuclear fuel	0.0	0.0	0.0	0.0	0.0	0.0	0.0	0.0	0.0	0.0	0.0	0.0	0.0	0.0%
■ Coke	0.1	0.0	0.0	0.0	0.0	0.0	0.0	0.0	0.0	0.0	0.0	0.0	0.1	100.0%
■ Waste heat	6.4	6.2	4.4	9.7	13.4	9.9	7.4	12.4	11.0	9.2	2.6	5.5	98.1	11.2%
■ Other liquid fuels	3.0	3.9	1.8	2.3	1.2	0.7	0.0	0.6	1.5	1.5	2.6	2.6	21.6	21.8%
■ Other solid fuels	6.0	7.1	7.6	7.1	6.6	7.6	5.1	7.6	0.1	5.7	6.5	6.8	73.7	2.5%
■ Other gases	67.0	45.3	60.9	52.3	79.2	67.4	63.0	66.6	66.3	83.3	82.4	80.8	814.4	20.5%
■ Other	0.0	0.0	0.0	0.0	0.0	0.0	0.0	0.0	0.0	0.0	0.0	0.0	0.0	0.0%
■ Fuel oils	1.2	8.8	1.9	0.3	0.2	0.0	2.7	0.5	0.3	0.3	0.5	0.9	17.6	6.1%
■ Natural gas	658.8	586.8	565.7	531.7	422.3	327.5	287.8	332.0	414.1	467.3	526.4	616.2	5,736.5	22.5%
<b>Heat supply to Prague</b>	<b>-1,486.5</b>	<b>-1,275.4</b>	<b>-1,225.4</b>	<b>-969.2</b>	<b>-667.7</b>	<b>-264.8</b>	<b>-123.4</b>	<b>-208.7</b>	<b>-346.0</b>	<b>-767.4</b>	<b>-1,103.5</b>	<b>-1,371.2</b>	<b>-9,809.1</b>	
<b>Heat consumption by economic sector*</b>	<b>1,327.6</b>	<b>1,207.6</b>	<b>1,136.4</b>	<b>962.4</b>	<b>730.2</b>	<b>427.1</b>	<b>364.3</b>	<b>395.1</b>	<b>550.4</b>	<b>801.1</b>	<b>1,019.8</b>	<b>1,230.7</b>	<b>10,152.6</b>	<b>12.1%</b>
■ Industry	623.1	581.4	579.7	510.2	432.5	295.9	256.8	289.1	370.7	454.1	524.0	575.5	5,492.9	24.9%
■ Energy	78.0	68.8	66.2	68.9	44.1	31.5	18.3	13.0	40.7	21.9	49.3	81.4	582.3	26.4%
■ Transport	4.8	4.5	3.9	2.5	1.6	0.2	0.3	0.2	0.5	1.9	3.0	3.8	27.4	3.7%
■ Construction	0.2	0.2	0.2	0.1	0.1	0.0	0.0	0.0	0.0	0.1	0.2	0.2	1.4	0.6%
■ Farming and forestry	1.6	1.4	1.3	1.3	1.4	1.1	1.4	1.6	1.8	2.5	2.3	2.2	19.8	4.7%
■ Households	423.0	372.9	333.2	258.8	176.1	71.4	64.9	67.5	99.0	219.1	297.2	382.2	2,765.3	7.5%
■ Retail, services, schools, health care	193.8	175.4	149.3	118.3	73.3	26.7	22.4	23.5	37.1	100.0	141.6	182.5	1,243.8	6.2%
■ Other	3.2	2.9	2.7	2.3	1.0	0.2	0.2	0.2	0.5	1.4	2.2	2.9	19.7	1.1%

\* The difference between supply and consumption includes losses of bought heat and a part of unidentified heat distribution.

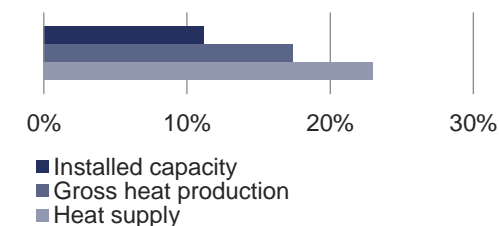
### Heat supply by fuel [TJ]



### Heat consumption by national economy sector [TJ]



### Share in CR



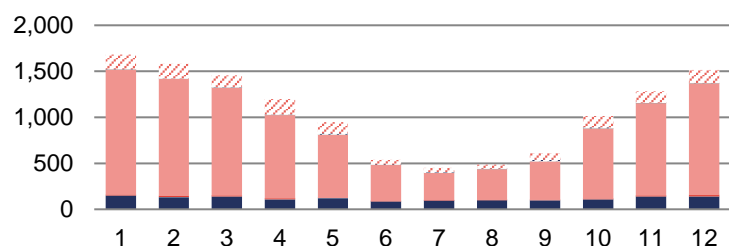
## 8.13 Heat production, supply and consumption: Ústecký Region



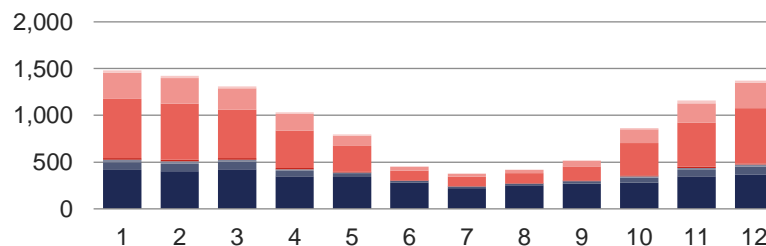
	First quarter			Second quarter			Third quarter			Fourth quarter			Total	Share in CR
	January	February	March	April	May	June	July	August	September	October	November	December		
<b>Total installed capacity [MWt]</b>	<b>10,191.4</b>	<b>10,191.4</b>	<b>10,191.4</b>	<b>10,098.9</b>	<b>10,098.9</b>	<b>9,934.6</b>	<b>9,932.3</b>	<b>9,932.3</b>	<b>9,932.3</b>	<b>9,932.4</b>	<b>9,932.4</b>	<b>9,932.4</b>	<b>9,932.4</b>	<b>25.4%</b>
<b>Gross heat production [TJ]</b>	<b>3,645.4</b>	<b>3,439.0</b>	<b>3,392.5</b>	<b>2,912.9</b>	<b>2,648.7</b>	<b>1,972.6</b>	<b>1,901.1</b>	<b>2,007.2</b>	<b>2,040.7</b>	<b>2,326.9</b>	<b>2,929.1</b>	<b>3,273.2</b>	<b>32,489.2</b>	<b>20.1%</b>
<b>Heat supply by fuel [TJ]</b>	<b>1,680.8</b>	<b>1,580.4</b>	<b>1,454.6</b>	<b>1,196.8</b>	<b>947.9</b>	<b>538.1</b>	<b>448.4</b>	<b>486.4</b>	<b>608.5</b>	<b>1,012.7</b>	<b>1,280.6</b>	<b>1,514.2</b>	<b>12,749.6</b>	<b>13.8%</b>
■ Biomass	146.6	129.1	138.0	107.2	120.0	85.2	95.2	97.9	95.5	105.4	136.5	137.0	1,393.5	16.0%
■ Biogas	3.3	3.0	3.1	3.0	1.9	1.4	1.1	1.6	1.7	2.6	3.1	3.2	29.0	5.0%
■ Hard coal	0.0	0.0	0.0	0.0	0.0	0.0	0.0	0.2	0.4	0.6	1.5	1.0	3.7	0.0%
■ Electrical energy	0.0	0.0	0.0	0.0	0.0	0.0	0.0	0.0	0.0	0.0	0.0	0.0	0.0	0.0%
■ Ambient energy (heat pump)	13.1	12.0	10.2	8.2	5.5	2.2	1.9	2.1	2.9	6.9	9.0	11.4	85.3	88.1%
■ Solar energy (solar panel)	0.0	0.0	0.0	0.0	0.0	0.0	0.0	0.0	0.0	0.0	0.0	0.0	0.1	14.8%
■ Brown coal	1,358.0	1,273.5	1,171.4	906.2	679.4	391.0	294.3	334.1	418.6	763.0	1,004.0	1,217.0	9,810.5	24.9%
■ Nuclear fuel	0.0	0.0	0.0	0.0	0.0	0.0	0.0	0.0	0.0	0.0	0.0	0.0	0.0	0.0%
■ Coke	0.0	0.0	0.0	0.0	0.0	0.0	0.0	0.0	0.0	0.0	0.0	0.0	0.0	0.0%
■ Waste heat	1.0	0.6	0.7	0.8	0.2	0.0	0.0	0.0	0.0	0.5	0.6	0.8	5.3	0.6%
■ Other liquid fuels	0.0	0.0	0.0	0.0	0.0	0.0	0.0	0.0	0.0	0.0	0.0	0.0	0.0	0.0%
■ Other solid fuels	1.4	0.4	0.8	1.5	3.2	2.5	1.5	3.9	3.0	1.9	1.0	1.2	22.3	0.8%
■ Other gases	0.0	0.0	2.6	5.0	17.0	7.5	9.5	3.6	17.6	9.9	0.0	0.0	72.6	1.8%
■ Other	0.0	0.0	0.0	0.0	0.0	0.0	0.0	0.0	0.0	0.0	0.0	0.0	0.0	0.0%
■ Fuel oils	0.2	2.2	1.9	0.6	0.1	0.1	0.0	0.1	1.3	1.5	0.8	1.2	9.8	3.4%
■ Natural gas	157.3	159.6	125.9	164.4	120.7	48.2	44.7	42.9	67.6	120.5	124.2	141.4	1,317.4	5.2%
<b>Heat consumption by economic sector*</b>	<b>1,481.1</b>	<b>1,422.5</b>	<b>1,309.5</b>	<b>1,032.0</b>	<b>794.6</b>	<b>453.4</b>	<b>379.8</b>	<b>421.1</b>	<b>519.3</b>	<b>864.9</b>	<b>1,160.1</b>	<b>1,372.9</b>	<b>11,211.2</b>	<b>13.3%</b>
■ Industry	414.8	403.6	423.9	347.4	340.7	277.5	222.4	251.0	267.7	277.8	346.4	368.4	3,941.8	17.9%
■ Energy	84.8	78.9	80.4	58.6	41.2	20.6	16.1	18.0	27.5	55.8	69.6	80.3	631.9	28.7%
■ Transport	25.5	25.6	21.2	15.6	7.3	2.0	1.4	1.4	2.2	13.0	19.1	23.4	157.8	21.3%
■ Construction	1.7	1.8	1.6	1.3	0.7	0.0	0.0	0.0	0.2	0.6	1.2	1.6	10.8	4.6%
■ Farming and forestry	14.7	16.5	16.5	13.5	6.2	2.0	1.6	2.6	3.9	10.6	14.3	11.9	114.2	27.0%
■ Households	634.6	597.8	516.6	402.2	276.5	107.8	101.5	107.6	153.5	346.1	471.0	589.5	4,304.7	11.7%
■ Retail, services, schools, health care	279.4	273.6	229.2	175.8	110.5	39.3	33.7	36.6	58.5	145.8	206.7	271.0	1,860.0	9.3%
■ Other	25.6	24.6	20.2	17.7	11.4	4.1	3.1	3.9	5.6	15.4	31.8	26.6	190.0	10.7%

\* The difference between supply and consumption includes losses of bought heat and a part of unidentified heat distribution.

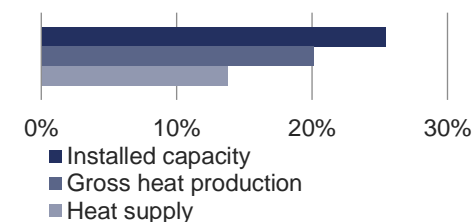
### Heat supply by fuel [TJ]



### Heat consumption by national economy sector [TJ]



### Share in CR



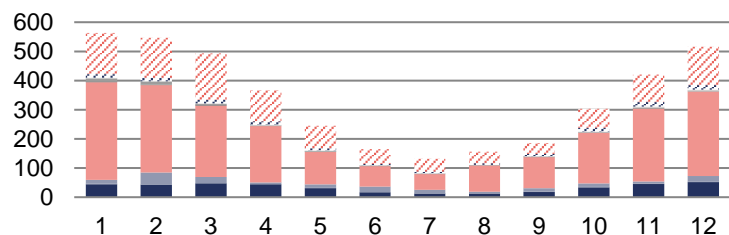
## 8.14 Heat production, supply and consumption: Zlínský Region



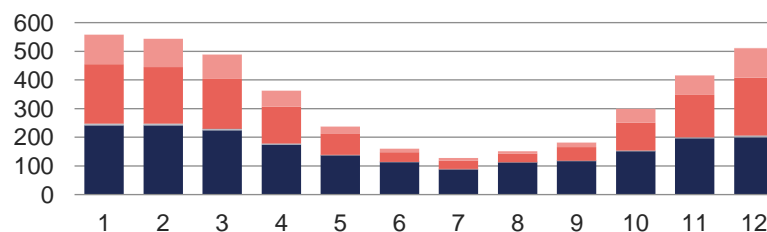
	First quarter			Second quarter			Third quarter			Fourth quarter			Total	Share in CR
	January	February	March	April	May	June	July	August	September	October	November	December		
<b>Total installed capacity [MWt]</b>	<b>1,338.2</b>	<b>1,338.2</b>	<b>1,338.2</b>	<b>1,338.2</b>	<b>1,338.3</b>	<b>1,338.3</b>	<b>1,338.3</b>	<b>1,338.3</b>	<b>1,333.4</b>	<b>1,333.4</b>	<b>1,333.6</b>	<b>1,333.9</b>	<b>1,333.9</b>	<b>3.4%</b>
<b>Gross heat production [TJ]</b>	<b>937.0</b>	<b>876.6</b>	<b>855.4</b>	<b>681.2</b>	<b>520.1</b>	<b>402.6</b>	<b>346.1</b>	<b>376.9</b>	<b>453.1</b>	<b>568.9</b>	<b>718.0</b>	<b>856.2</b>	<b>7,592.1</b>	<b>4.7%</b>
<b>Heat supply by fuel [TJ]</b>	<b>563.1</b>	<b>547.1</b>	<b>493.1</b>	<b>367.0</b>	<b>244.5</b>	<b>165.1</b>	<b>131.7</b>	<b>155.6</b>	<b>185.3</b>	<b>303.1</b>	<b>420.3</b>	<b>516.5</b>	<b>4,092.4</b>	<b>4.4%</b>
■ Biomass	44.6	42.5	47.4	44.0	31.0	17.0	11.9	12.6	18.0	33.5	44.9	52.2	399.6	4.6%
■ Biogas	1.2	1.3	1.0	1.2	1.5	0.6	0.3	0.4	0.8	1.3	0.9	0.7	11.2	1.9%
■ Hard coal	13.4	40.7	21.0	5.7	11.2	18.6	13.2	6.1	12.6	12.2	8.1	19.9	182.6	1.9%
■ Electrical energy	0.0	0.0	0.0	0.0	0.0	0.1	0.1	0.0	0.0	0.0	0.0	0.0	0.3	0.8%
■ Ambient energy (heat pump)	0.0	0.0	0.0	0.0	0.0	0.0	0.0	0.0	0.0	0.0	0.0	0.0	0.0	0.0%
■ Solar energy (solar panel)	0.0	0.0	0.0	0.0	0.0	0.0	0.0	0.0	0.0	0.0	0.0	0.0	0.0	0.0%
■ Brown coal	335.2	299.6	245.2	192.9	111.7	69.9	53.6	90.1	105.6	174.2	249.8	289.8	2,217.8	5.6%
■ Nuclear fuel	0.0	0.0	0.0	0.0	0.0	0.0	0.0	0.0	0.0	0.0	0.0	0.0	0.0	0.0%
■ Coke	0.0	0.0	0.0	0.0	0.0	0.0	0.0	0.0	0.0	0.0	0.0	0.0	0.0	0.0%
■ Waste heat	1.6	1.2	1.6	1.5	1.8	0.8	1.0	0.1	1.4	0.5	0.6	0.0	12.1	1.4%
■ Other liquid fuels	10.9	9.4	3.7	0.9	0.1	0.6	0.0	0.0	0.4	1.3	3.4	3.5	34.2	34.6%
■ Other solid fuels	2.5	2.2	1.9	2.3	2.7	2.0	2.2	1.7	1.5	2.1	2.7	2.7	26.4	0.9%
■ Other gases	12.8	12.3	11.5	12.0	8.5	4.8	5.9	5.4	7.7	12.7	16.2	15.1	124.9	3.1%
■ Other	0.0	0.0	0.0	0.0	0.0	0.0	0.0	0.0	0.0	0.0	0.0	0.0	0.0	0.0%
■ Fuel oils	0.2	0.6	0.2	0.1	0.1	0.0	0.1	0.3	0.1	0.0	0.0	0.1	1.7	0.6%
■ Natural gas	140.8	137.1	159.5	106.4	76.0	50.8	43.5	38.8	37.2	65.3	93.7	132.6	1,081.7	4.3%
<b>Heat consumption by economic sector*</b>	<b>558.9</b>	<b>543.7</b>	<b>489.4</b>	<b>363.0</b>	<b>237.4</b>	<b>160.6</b>	<b>127.5</b>	<b>151.6</b>	<b>181.0</b>	<b>298.9</b>	<b>416.0</b>	<b>511.7</b>	<b>4,039.6</b>	<b>4.8%</b>
■ Industry	240.4	240.2	223.9	174.0	136.5	112.8	87.7	111.9	116.6	151.1	196.2	199.2	1,990.4	9.0%
■ Energy	0.2	0.2	0.2	0.2	0.1	0.4	0.8	0.8	0.7	0.5	0.5	0.6	5.2	0.2%
■ Transport	3.6	3.7	3.2	1.9	0.6	0.3	0.1	0.1	0.2	0.9	1.5	3.1	19.3	2.6%
■ Construction	3.0	3.0	2.6	2.1	0.5	0.3	0.1	0.1	0.2	0.9	1.8	2.7	17.3	7.4%
■ Farming and forestry	1.2	1.5	1.5	1.3	1.0	0.7	0.7	0.8	0.8	0.9	0.6	1.1	12.1	2.9%
■ Households	206.1	196.3	172.4	126.8	73.1	32.8	29.0	29.1	47.0	95.8	147.3	201.8	1,357.5	3.7%
■ Retail, services, schools, health care	103.7	98.2	85.0	56.4	25.2	13.3	9.0	8.7	15.3	48.5	67.7	102.6	633.7	3.2%
■ Other	0.8	0.7	0.6	0.4	0.1	0.0	0.0	0.0	0.0	0.2	0.5	0.6	4.0	0.2%

\* The difference between supply and consumption includes losses of bought heat and a part of unidentified heat distribution.

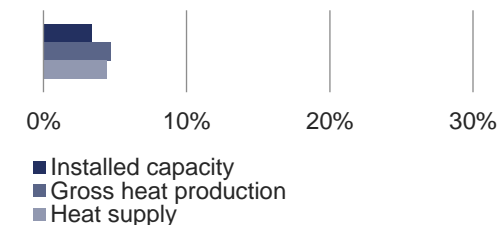
### Heat supply by fuel [TJ]



### Heat consumption by national economy sector [TJ]



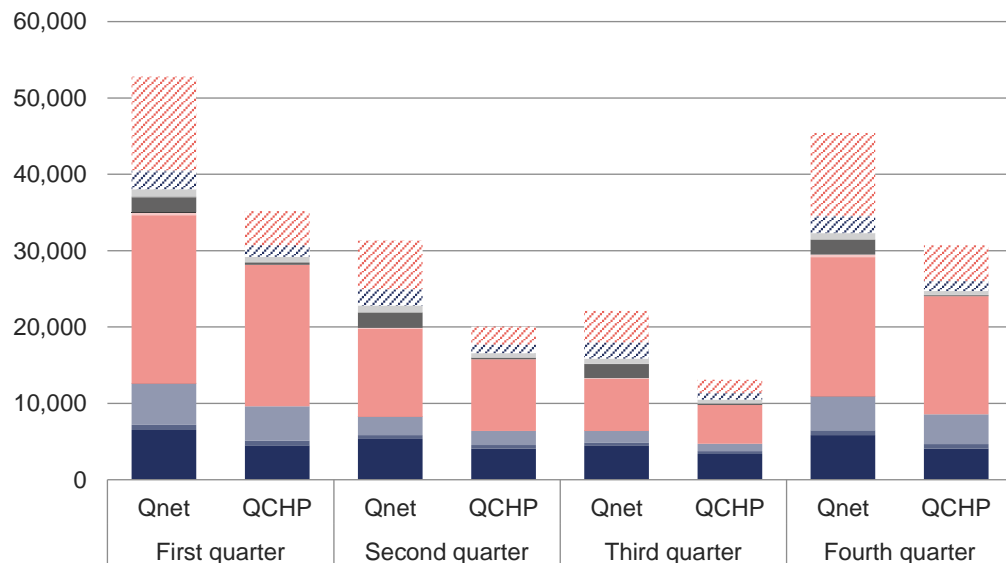
### Share in CR



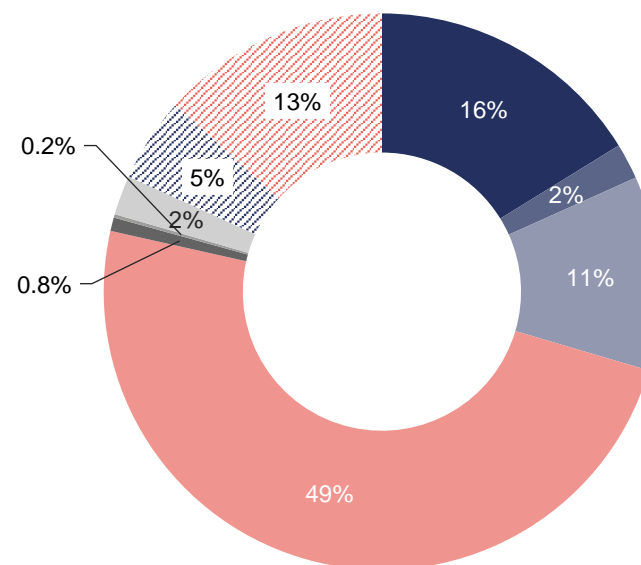
## 9 Net heat production and heat production from CHP [TJ]

	First quarter			Second quarter			Third quarter			Fourth quarter			Total		
	Q <sub>net</sub>	Q <sub>CHP</sub>	Q <sub>CHP</sub> /Q <sub>net</sub>	Q <sub>net</sub>	Q <sub>CHP</sub>	Q <sub>CHP</sub> /Q <sub>net</sub>	Q <sub>net</sub>	Q <sub>CHP</sub>	Q <sub>CHP</sub> /Q <sub>net</sub>	Q <sub>net</sub>	Q <sub>CHP</sub>	Q <sub>CHP</sub> /Q <sub>net</sub>	Q <sub>net</sub>	Q <sub>CHP</sub>	Q <sub>CHP</sub> /Q <sub>net</sub>
<b>Total</b>	<b>52,796.3</b>	<b>35,182.8</b>	<b>67%</b>	<b>31,351.7</b>	<b>20,046.9</b>	<b>64%</b>	<b>22,111.9</b>	<b>13,085.1</b>	<b>59%</b>	<b>45,421.9</b>	<b>30,700.2</b>	<b>68%</b>	<b>151,681.8</b>	<b>99,014.9</b>	<b>65%</b>
■ Biomass	6,535.2	4,516.5	69%	5,339.9	4,064.8	76%	4,492.1	3,370.5	75%	5,853.7	4,086.4	70%	22,221.0	16,038.2	72%
■ Biogas	649.9	615.5	95%	490.4	467.2	95%	408.4	383.8	94%	628.0	595.3	95%	2,176.6	2,061.9	95%
■ Hard coal	5,409.1	4,466.7	83%	2,419.4	1,844.4	76%	1,473.9	971.3	66%	4,435.9	3,899.4	88%	13,738.3	11,181.8	81%
■ Electrical energy	7.4	0.0	0%	9.4	0.0	0%	12.2	0.0	0%	9.1	0.0	0%	38.0	0.0	0%
■ Ambient energy (heat pump)	38.2	0.0	0%	20.1	0.0	0%	10.7	0.0	0%	31.6	0.0	0%	100.7	0.0	0%
■ Solar energy (solar panel)	0.1	0.0	0%	0.2	0.0	0%	0.2	0.0	0%	0.1	0.0	0%	0.6	0.0	0%
■ Brown coal	22,012.7	18,549.1	84%	11,516.6	9,391.6	82%	6,823.5	5,067.9	74%	18,207.2	15,441.5	85%	58,560.0	48,450.2	83%
■ Nuclear fuel	378.2	0.0	0%	96.5	0.0	0%	73.4	0.0	0%	315.4	0.0	0%	863.5	0.0	0%
■ Coke	0.1	0.0	0%	0.0	0.0	0%	0.0	0.0	0%	0.0	0.0	0%	0.1	0.0	0%
■ Waste heat	1,953.2	234.1	12%	2,022.7	212.8	11%	1,873.2	181.3	10%	1,944.3	147.9	8%	7,793.5	776.1	10%
■ Other liquid fuels	155.1	132.9	86%	35.5	16.8	47%	32.1	4.9	15%	66.3	44.5	67%	289.0	199.1	69%
■ Other solid fuels	914.7	695.8	76%	893.7	569.9	64%	672.2	516.7	77%	812.8	484.2	60%	3,293.4	2,266.6	69%
■ Other gases	2,309.8	1,478.9	64%	2,076.5	1,155.9	56%	2,076.5	864.5	42%	2,139.6	1,362.1	64%	8,602.5	4,861.5	57%
■ Other	0.0	0.0	0%	0.0	0.0	0%	0.0	0.0	0%	0.0	0.0	0%	0.0	0.0	0%
■ Fuel oils	147.0	4.3	3%	52.2	3.4	7%	39.8	2.5	6%	111.9	5.5	5%	351.0	15.8	5%
■ Natural gas	12,285.6	4,488.9	37%	6,378.5	2,320.0	36%	4,123.8	1,721.6	42%	10,865.8	4,633.3	43%	33,653.7	13,163.8	39%

Net heat production and heat production from CHP by fuel [TJ]



Shares of fuels in heat production from CHP

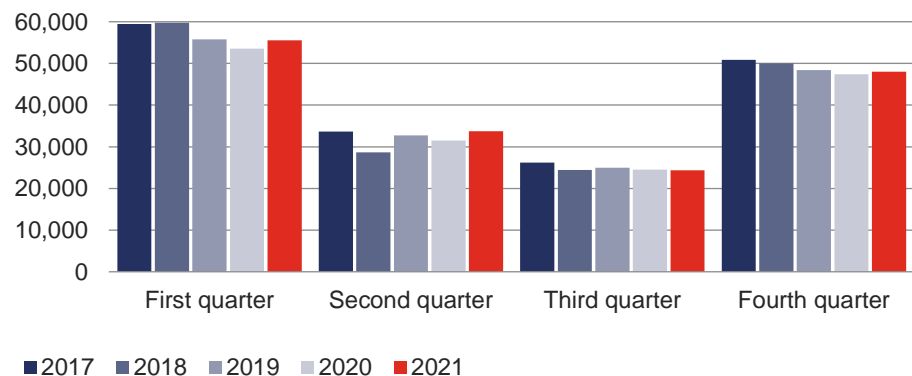


# 10 Heat balance, heat supply, heat consumption, and CHP

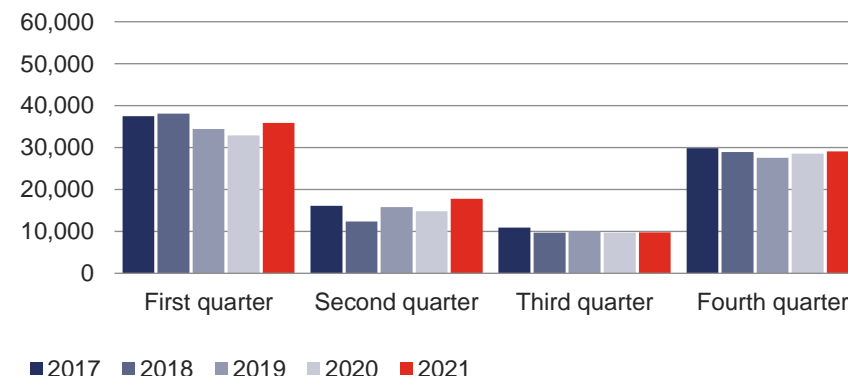
## 10.1 Development of the heat balance [TJ], quarter-on-quarter comparison

	First quarter	Second quarter	Third quarter	Fourth quarter	Total
Gross heat production in 2017	59,492.4	33,647.2	26,175.9	50,852.3	170,167.8
Gross heat production in 2018	59,760.7	28,688.6	24,452.4	50,022.5	162,924.3
Gross heat production in 2019	55,809.2	32,753.7	24,978.4	48,372.3	161,913.6
Gross heat production in 2020	53,528.8	31,489.6	24,527.7	47,371.7	156,917.7
Gross heat production in 2021	55,526.6	33,752.0	24,370.2	48,008.6	161,657.4
Year-on-year change - gross heat production	1,997.9	2,262.4	-157.5	636.9	4,739.7
<b>Year-on-year change - gross heat production</b>	<b>3.7%</b>	<b>7.2%</b>	<b>-0.6%</b>	<b>1.3%</b>	<b>3.0%</b>
Heat supply in 2017	37,510.2	16,101.3	10,892.1	29,809.3	94,312.8
Heat supply in 2018	38,059.7	12,376.4	9,704.6	28,893.5	89,034.2
Heat supply in 2019	34,400.2	15,804.1	10,045.8	27,517.0	87,767.1
Heat supply in 2020	32,870.9	14,818.9	9,700.2	28,538.5	85,928.5
Heat supply in 2021	35,864.9	17,756.2	9,766.4	29,041.9	92,429.4
Year-on-year change - heat supply	2,993.9	2,937.3	66.2	503.4	6,500.9
<b>Year-on-year change - heat supply</b>	<b>9.1%</b>	<b>19.8%</b>	<b>0.7%</b>	<b>1.8%</b>	<b>7.6%</b>

Gross heat production [TJ]



Heat supply [TJ]

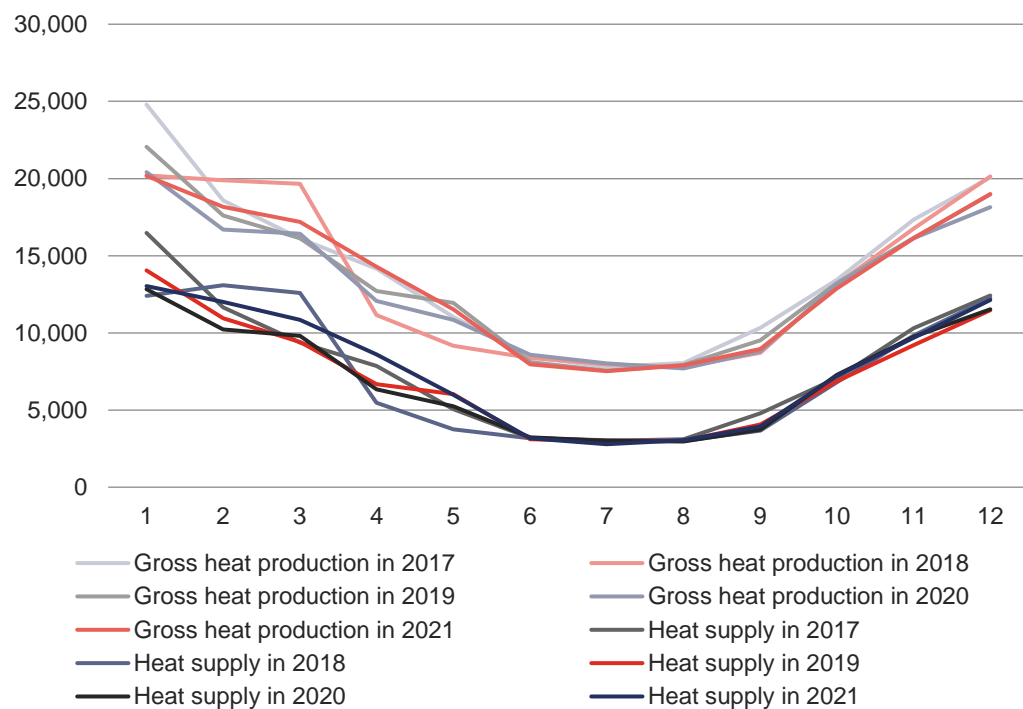




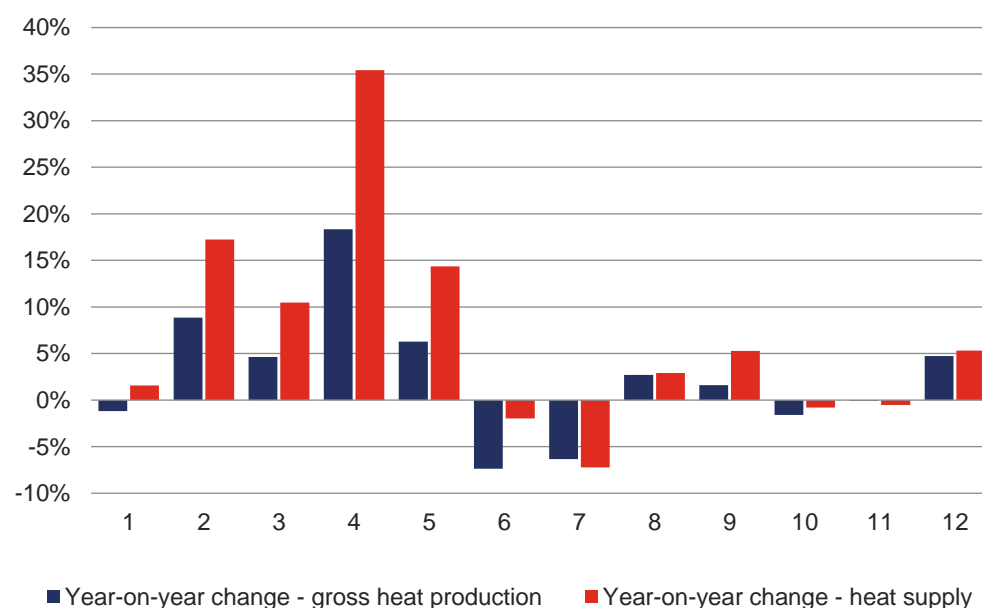
## 10.2 Development of the heat balance [TJ], month-on-month comparison

	January	February	March	April	May	June	July	August	September	October	November	December	Total
Gross heat production in 2017	24,789.6	18,587.7	16,115.1	14,167.0	11,027.9	8,452.3	7,792.7	8,048.4	10,334.8	13,440.6	17,328.8	20,082.9	170,167.8
Gross heat production in 2018	20,205.2	19,893.2	19,662.3	11,150.5	9,168.1	8,369.9	7,963.0	7,784.7	8,704.8	13,135.1	16,756.4	20,131.1	162,924.3
Gross heat production in 2019	22,056.2	17,612.4	16,140.6	12,700.3	11,948.7	8,104.7	7,552.8	7,913.1	9,512.5	13,236.2	16,157.6	18,978.5	161,913.6
Gross heat production in 2020	20,414.7	16,681.8	16,432.3	12,068.1	10,838.7	8,582.7	8,024.1	7,694.3	8,809.2	13,094.1	16,139.1	18,138.6	156,917.7
Gross heat production in 2021	20,171.3	18,159.6	17,195.8	14,283.0	11,518.7	7,950.3	7,516.8	7,902.9	8,950.5	12,884.3	16,126.6	18,997.6	161,657.4
Year-on-year change - gross heat production	-243.4	1,477.8	763.5	2,214.9	680.0	-632.4	-507.3	208.6	141.3	-209.7	-12.5	859.1	4,739.7
<b>Year-on-year change - gross heat production</b>	<b>-1.2%</b>	<b>8.9%</b>	<b>4.6%</b>	<b>18.4%</b>	<b>6.3%</b>	<b>-7.4%</b>	<b>-6.3%</b>	<b>2.7%</b>	<b>1.6%</b>	<b>-1.6%</b>	<b>-0.1%</b>	<b>4.7%</b>	<b>3.0%</b>
Heat supply in 2017	16,476.8	11,652.7	9,380.7	7,846.2	5,061.3	3,193.8	3,007.0	3,096.8	4,788.2	7,068.4	10,311.6	12,429.3	94,312.8
Heat supply in 2018	12,397.1	13,087.2	12,575.4	5,467.8	3,743.2	3,165.4	3,043.6	2,999.8	3,661.2	6,796.5	9,833.6	12,263.3	89,034.2
Heat supply in 2019	14,046.4	10,951.4	9,402.4	6,672.5	6,033.9	3,097.7	2,995.6	2,998.1	4,052.1	6,857.3	9,198.7	11,461.0	87,767.1
Heat supply in 2020	12,828.7	10,230.7	9,811.6	6,347.8	5,236.3	3,234.8	3,001.1	2,961.1	3,737.9	7,281.4	9,737.8	11,519.3	85,928.5
Heat supply in 2021	13,031.2	11,995.3	10,838.3	8,596.0	5,988.6	3,171.6	2,784.2	3,046.9	3,935.3	7,223.6	9,685.8	12,132.5	92,429.4
Year-on-year change - heat supply	202.6	1,764.6	1,026.7	2,248.2	752.3	-63.3	-217.0	85.8	197.4	-57.8	-52.0	613.2	6,500.9
<b>Year-on-year change - heat supply</b>	<b>1.6%</b>	<b>17.2%</b>	<b>10.5%</b>	<b>35.4%</b>	<b>14.4%</b>	<b>-2.0%</b>	<b>-7.2%</b>	<b>2.9%</b>	<b>5.3%</b>	<b>-0.8%</b>	<b>-0.5%</b>	<b>5.3%</b>	<b>7.6%</b>

Heat production and supply [TJ]



Year-on-year change [%]



## 10.3 Gross heat production by fuel and Czech Regions [TJ]

	2017	2018	2019	2020	2021	Difference (2021-2020)	Year-on-year change
<b>Gross heat production</b>	<b>170,167.8</b>	<b>162,924.3</b>	<b>161,913.6</b>	<b>156,917.7</b>	<b>161,657.4</b>	<b>4,739.7</b>	<b>3.0%</b>
Biomass	17,648.9	17,078.2	20,039.1	21,971.4	23,738.3	1,767.0	8.0%
Biogas	4,210.6	4,141.2	4,105.3	4,198.9	4,268.9	70.0	1.7%
Hard coal	19,473.1	16,943.3	14,806.7	13,783.9	14,593.1	809.2	5.9%
Electrical energy	12.9	15.4	17.5	13.3	38.0	24.8	186.7%
Ambient energy (heat pump)	86.1	86.6	70.7	92.8	100.7	7.9	8.5%
Solar energy (solar panel)	0.4	0.9	0.5	0.5	0.6	0.1	12.3%
Brown coal	70,523.4	68,822.1	67,378.0	62,430.9	60,661.9	-1,769.0	-2.8%
Nuclear fuel	908.1	864.3	852.9	786.6	863.5	76.9	9.8%
Coke	0.4	0.6	0.2	0.1	0.1	0.0	-25.5%
Waste heat	8,866.3	7,905.6	8,079.1	7,393.7	8,343.6	949.9	12.8%
Other liquid fuels	802.6	524.8	549.4	581.9	349.6	-232.4	-39.9%
Other solid fuels	4,590.2	4,621.6	4,471.7	4,585.7	4,423.7	-162.0	-3.5%
Other gases	10,390.4	11,021.7	10,470.8	9,028.0	9,421.2	393.1	4.4%
Other	0.0	0.0	0.0	0.0	0.0	0.0	0.0%
Fuel oils	430.3	183.6	151.1	182.8	363.8	181.1	99.1%
Natural gas	32,224.0	30,714.6	30,920.5	31,867.2	34,490.3	2,623.2	8.2%

	2017	2018	2019	2020	2021	Difference (2021-2020)	Year-on-year change
<b>Gross heat production</b>	<b>170,167.8</b>	<b>162,924.3</b>	<b>161,913.6</b>	<b>156,917.7</b>	<b>161,657.4</b>	<b>4,739.7</b>	<b>3.0%</b>
Prague	6,513.7	6,063.6	5,633.6	5,417.9	5,875.0	457.1	8.4%
Jihočeský Region	7,990.7	7,562.4	7,421.4	7,376.0	7,676.4	300.4	4.1%
Jihomoravský Region	8,316.8	7,953.9	7,658.5	7,704.9	8,098.2	393.3	5.1%
Karlovarský Region	15,685.1	15,930.2	15,117.2	13,067.3	8,275.0	-4,792.3	-36.7%
Vysočina Region	3,824.9	3,581.2	3,422.7	3,493.2	3,949.4	456.2	13.1%
Královéhradecký Region	4,739.1	4,633.7	4,584.5	4,417.0	4,724.6	307.6	7.0%
Liberecký Region	2,745.8	2,604.1	2,554.2	2,463.3	2,637.6	174.3	7.1%
Moravskoslezský Region	33,398.8	32,381.5	30,852.1	30,371.8	32,270.6	1,898.9	6.3%
Olomoucký Region	7,051.9	6,467.7	6,464.6	6,387.0	6,841.2	454.2	7.1%
Pardubický Region	6,608.7	6,646.1	6,740.4	6,530.2	7,039.7	509.5	7.8%
Plzeňský Region	6,016.3	5,635.7	5,718.7	5,655.2	6,069.4	414.2	7.3%
Středočeský Region	30,886.7	28,289.2	27,676.8	26,020.3	28,119.1	2,098.7	8.1%
Ústecký Region	28,158.0	27,447.0	30,302.9	30,482.4	32,489.2	2,006.8	6.6%
Zlínský Region	8,231.3	7,728.2	7,765.9	7,531.2	7,592.1	60.9	0.8%

## 10.4 Heat supply by fuel and Czech Regions [TJ]

	2017	2018	2019	2020	2021	Difference (2021-2020)	Year-on-year change
<b>Heat supply</b>	<b>94,312.8</b>	<b>89,034.2</b>	<b>87,767.1</b>	<b>85,928.5</b>	<b>92,429.4</b>	<b>6,500.9</b>	<b>7.6%</b>
Biomass	6,082.2	5,759.4	6,498.7	7,593.0	8,716.0	1,122.9	14.8%
Biogas	494.4	515.1	515.1	542.1	583.3	41.2	7.6%
Hard coal	13,370.0	11,279.0	9,965.5	9,169.3	9,782.4	613.1	6.7%
Electrical energy	8.8	11.9	13.4	8.8	33.5	24.8	282.2%
Ambient energy (heat pump)	75.6	74.5	69.1	89.9	96.9	7.0	7.8%
Solar energy (solar panel)	0.4	0.9	0.5	0.5	0.6	0.1	12.3%
Brown coal	42,615.2	40,940.7	40,138.3	37,446.9	39,425.5	1,978.6	5.3%
Nuclear fuel	247.8	236.4	234.0	199.1	211.0	11.9	6.0%
Coke	0.4	0.6	0.2	0.1	0.1	0.0	-25.5%
Waste heat	944.2	1,055.2	978.3	969.9	874.1	-95.9	-9.9%
Other liquid fuels	156.0	108.6	89.6	93.0	98.9	5.9	6.3%
Other solid fuels	2,925.7	2,872.9	2,824.1	3,027.5	2,892.2	-135.3	-4.5%
Other gases	3,974.3	4,026.1	3,938.3	3,422.8	3,974.8	552.0	16.1%
Other	0.0	0.0	0.0	0.0	0.0	0.0	0.0%
Fuel oils	328.6	90.9	96.1	134.9	289.9	155.0	114.8%
Natural gas	23,089.0	22,062.0	22,405.8	23,230.7	25,450.3	2,219.6	9.6%

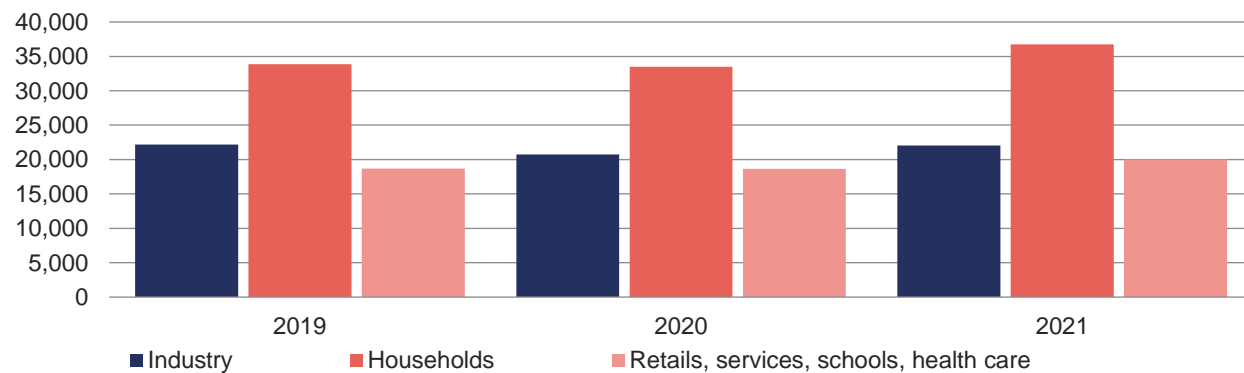
	2017	2018	2019	2020	2021	Difference (2021-2020)	Year-on-year change
<b>Heat supply</b>	<b>94,312.8</b>	<b>89,034.2</b>	<b>87,767.1</b>	<b>85,928.5</b>	<b>92,429.4</b>	<b>6,500.9</b>	<b>7.6%</b>
Prague	5,035.8	4,535.4	4,187.4	4,112.2	4,513.4	401.2	9.8%
Jihočeský Region	5,365.8	5,054.8	5,010.8	4,954.4	5,113.3	158.8	3.2%
Jihomoravský Region	5,808.9	5,522.9	5,341.6	5,413.6	5,787.8	374.2	6.9%
Karlovarský Region	4,116.6	3,857.0	3,445.4	3,172.5	3,503.6	331.1	10.4%
Vysočina Region	1,572.9	1,462.7	1,510.3	1,544.9	1,746.8	201.8	13.1%
Královéhradecký Region	3,085.2	2,983.9	2,983.0	2,888.5	3,086.3	197.8	6.8%
Liberecký Region	2,309.3	2,150.4	2,145.2	2,053.3	2,233.2	179.9	8.8%
Moravskoslezský Region	16,589.4	15,533.7	15,065.6	14,829.8	16,076.3	1,246.5	8.4%
Olomoucký Region	3,597.3	3,314.4	3,270.5	3,331.0	3,554.1	223.0	6.7%
Pardubický Region	4,382.4	4,086.2	4,069.0	3,980.5	4,405.9	425.4	10.7%
Plzeňský Region	4,411.6	4,077.5	4,076.1	3,969.1	4,366.4	397.3	10.0%
Středočeský Region	20,877.0	20,229.2	20,302.1	19,644.2	21,200.4	1,556.2	7.9%
Ústecký Region	12,877.5	12,237.5	12,339.0	12,165.5	12,749.6	584.1	4.8%
Zlínský Region	4,283.2	3,988.3	4,021.0	3,868.9	4,092.4	223.5	5.8%

## 10.5 Heat consumption [TJ]

	2019	2020	2021	Difference (2021-2020)	Year-on-year change
<b>Heat consumption by national economy sector *</b>	<b>79,884.2</b>	<b>77,955.3</b>	<b>84,171.3</b>	<b>6,216.0</b>	<b>8.0%</b>
■ Industry	22,188.7	20,738.1	22,024.8	1,286.8	6.2%
■ Energy	2,037.7	2,142.5	2,204.6	62.1	2.9%
■ Transport	690.7	675.5	741.4	65.8	9.7%
■ Construction	402.2	253.0	233.2	-19.9	-7.8%
■ Farming and forestry	313.6	383.3	423.6	40.3	10.5%
■ Households	33,848.8	33,508.5	36,758.4	3,249.9	9.7%
■ Retails, services, schools, health care	18,669.0	18,658.0	20,012.3	1,354.3	7.3%
■ Other	1,733.6	1,596.4	1,773.1	176.7	11.1%

\* Does not include unidentified heat distribution.

### Heat consumption [TJ]

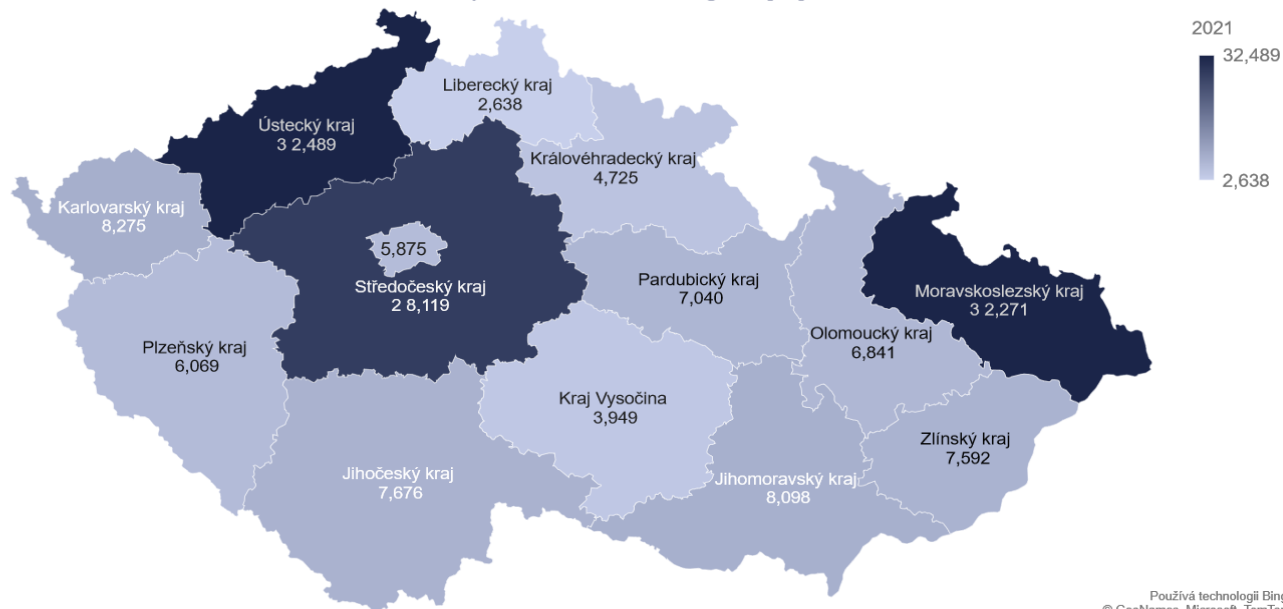


## 10.6 Heat production from CHP [TJ]

	2017	2018	2019	2020	2021	Difference (2021-2020)	Year-on-year change
<b>Q<sub>CHP</sub></b>	<b>103,621.0</b>	<b>102,301.6</b>	<b>99,298.9</b>	<b>100,297.1</b>	<b>99,014.9</b>	<b>-1,282.1</b>	<b>-1.3%</b>
■ Biomass	10,528.0	12,114.9	12,780.7	17,194.5	16,038.2	-1,156.3	-6.7%
■ Biogas	2,003.6	1,996.6	1,972.0	2,009.3	2,061.9	52.6	2.6%
■ Hard coal	14,725.0	12,784.3	11,105.7	10,744.5	11,181.8	437.4	4.1%
■ Electrical energy	0.0	0.0	0.0	0.0	0.0	0.0	0.0%
■ Ambient energy (heat pump)	0.0	0.0	0.0	0.0	0.0	0.0	0.0%
■ Solar energy (solar panel)	0.0	0.0	0.0	0.0	0.0	0.0	0.0%
■ Brown coal	57,245.4	56,044.9	54,526.2	50,558.5	48,450.2	-2,108.4	-4.2%
■ Nuclear fuel	0.0	0.0	0.0	0.0	0.0	0.0	0.0%
■ Coke	0.0	0.0	0.0	0.0	0.0	0.0	0.0%
■ Waste heat	630.1	749.0	697.7	787.2	776.1	-11.1	-1.4%
■ Other liquid fuels	353.2	296.6	228.0	325.4	199.1	-126.3	-38.8%
■ Other solid fuels	2,492.9	2,354.4	2,023.9	2,365.8	2,266.6	-99.1	-4.2%
⚡ Other gases	4,556.3	4,795.1	4,451.3	4,356.8	4,861.5	504.7	11.6%
⚡ Other	0.0	0.0	0.0	0.0	0.0	0.0	0.0%
⚡ Fuel oils	163.7	43.1	24.4	17.0	15.8	-1.2	-6.8%
⚡ Natural gas	10,922.9	11,122.7	11,489.1	11,938.2	13,163.8	1,225.6	10.3%

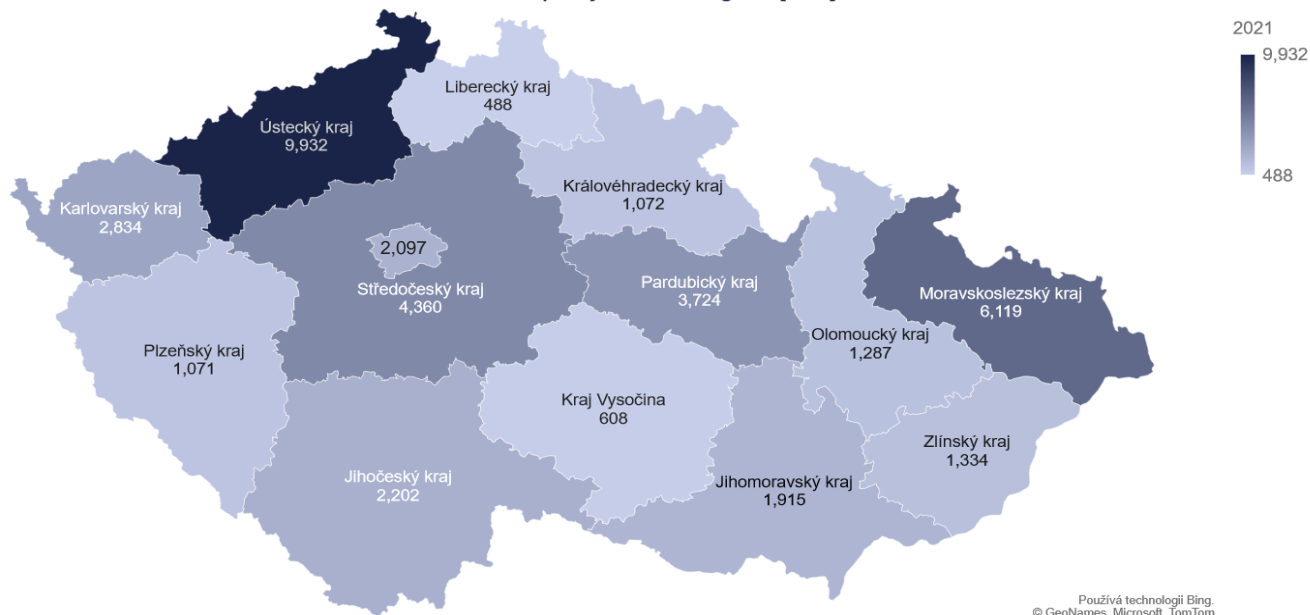
# 11 ADDITIONAL GRAPHS AND THE HEAT BALANCE DIAGRAM FOR 2021

Gross heat production in Czech Regions [TJ]



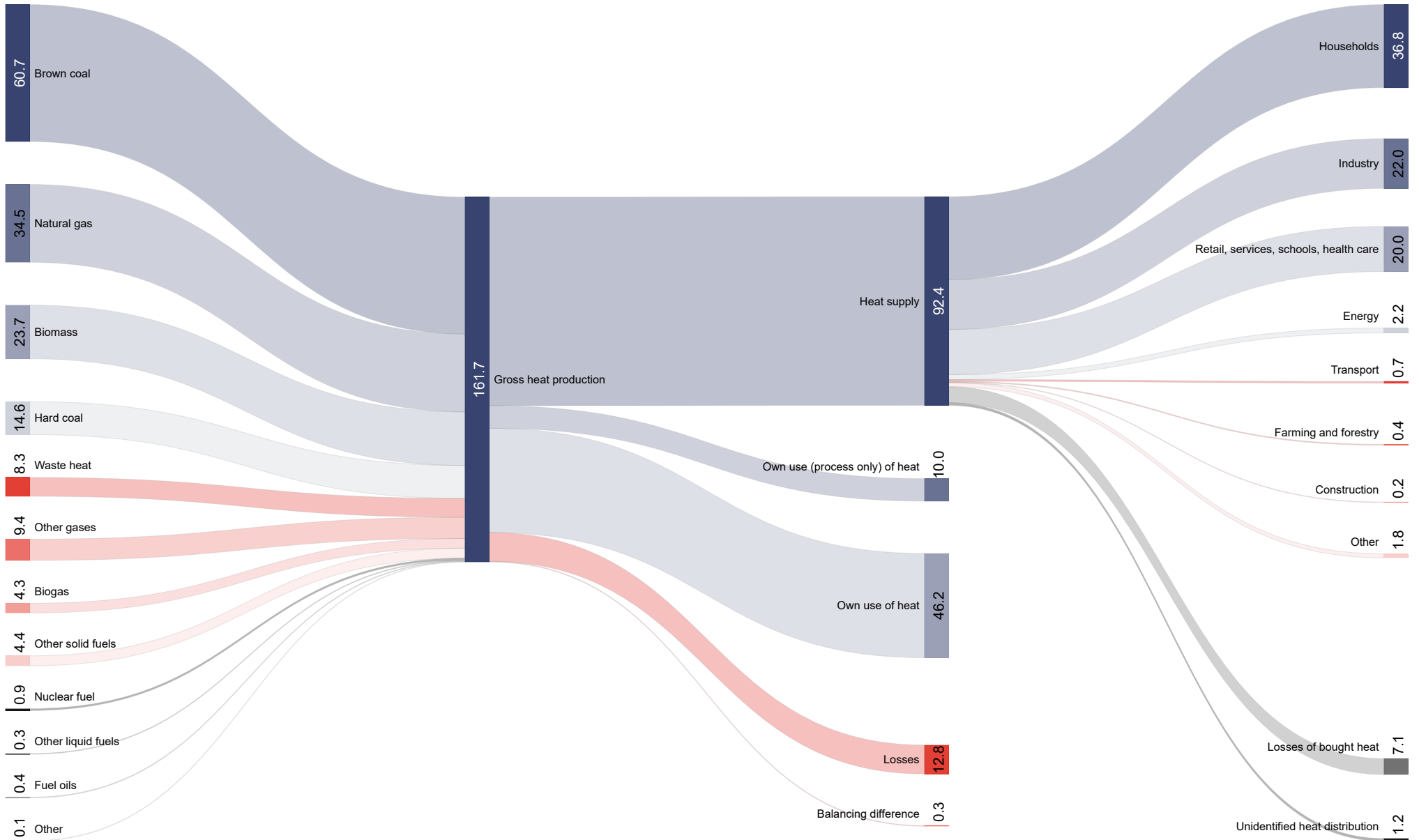
Používá technologii Bing.  
© GeoNames, Microsoft, TomTom

Installed capacity in Czech Regions [MWt]



Používá technologii Bing.  
© GeoNames, Microsoft, TomTom

# Heat balance diagram for 2021 [PJ]



**Statistics and Quality Monitoring Unit**  
teplo.statistika@eru.cz

Released on 21 June 2022



**Energy Regulatory Office**  
Masarykovo náměstí 91/5, 586 01 Jihlava  
+420 564 578 666  
podatelna@eru.cz  
ERO mailbox ID eeuaau7  
**www.eru.cz**

© 2022  
**Energy Regulatory Office**